

HOUSE ON BRIDGE DECK.

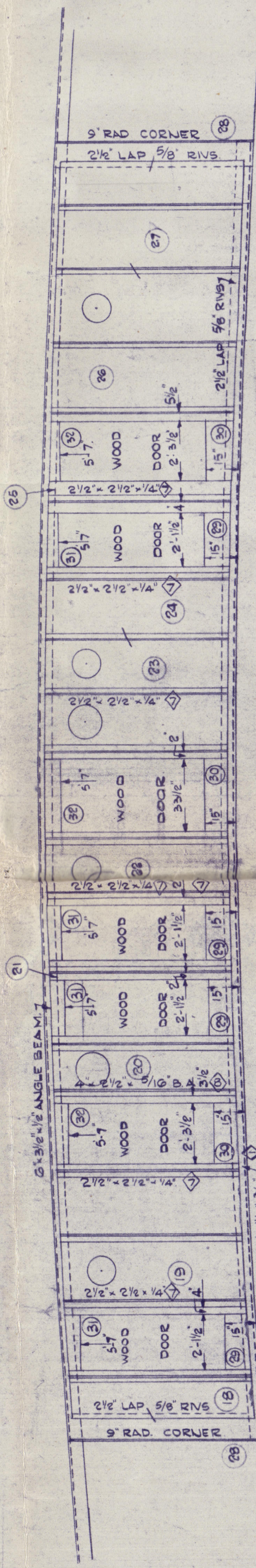
SCALE - 1/4" = ONE FOOT.

CODE No 114.

NOTES -  
ALL PARTITIONS SURROUNDING LAVATORIES CAULKED WT. TO HEIGHT OF DOOR  
BULL & FINISHED SMOOTHTIGHT. PARTITIONS SURROUNDING HOSPITAL  
INCLUDING BATH & W.C. TO BE SASTIGHT.

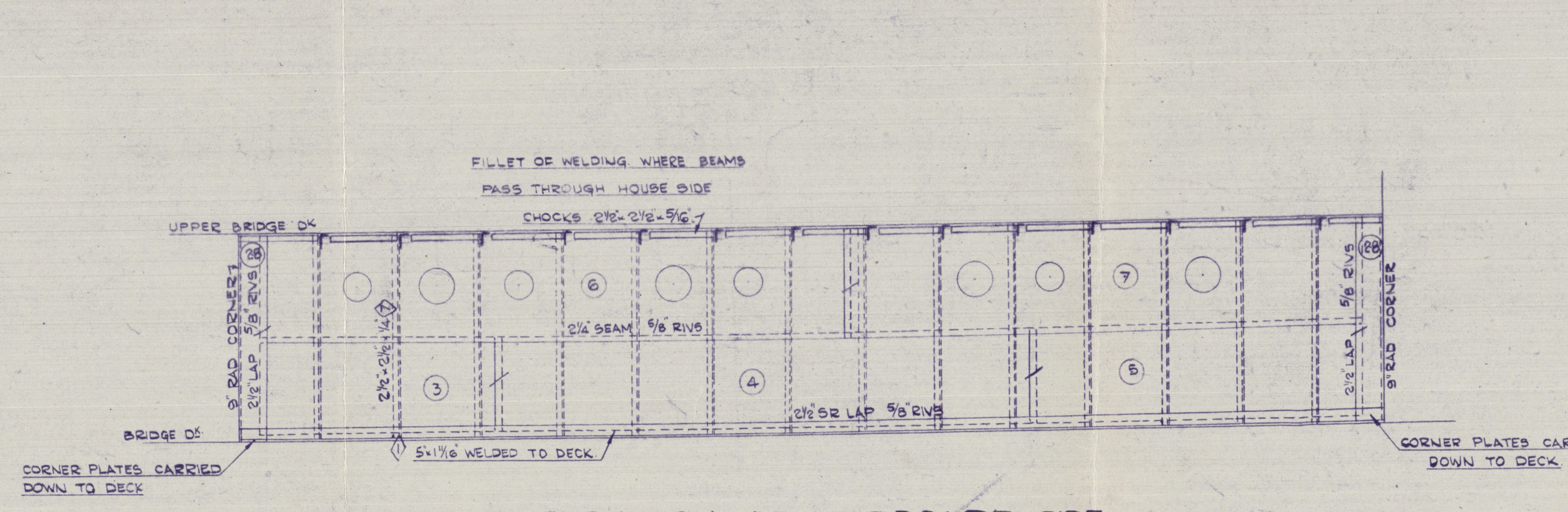
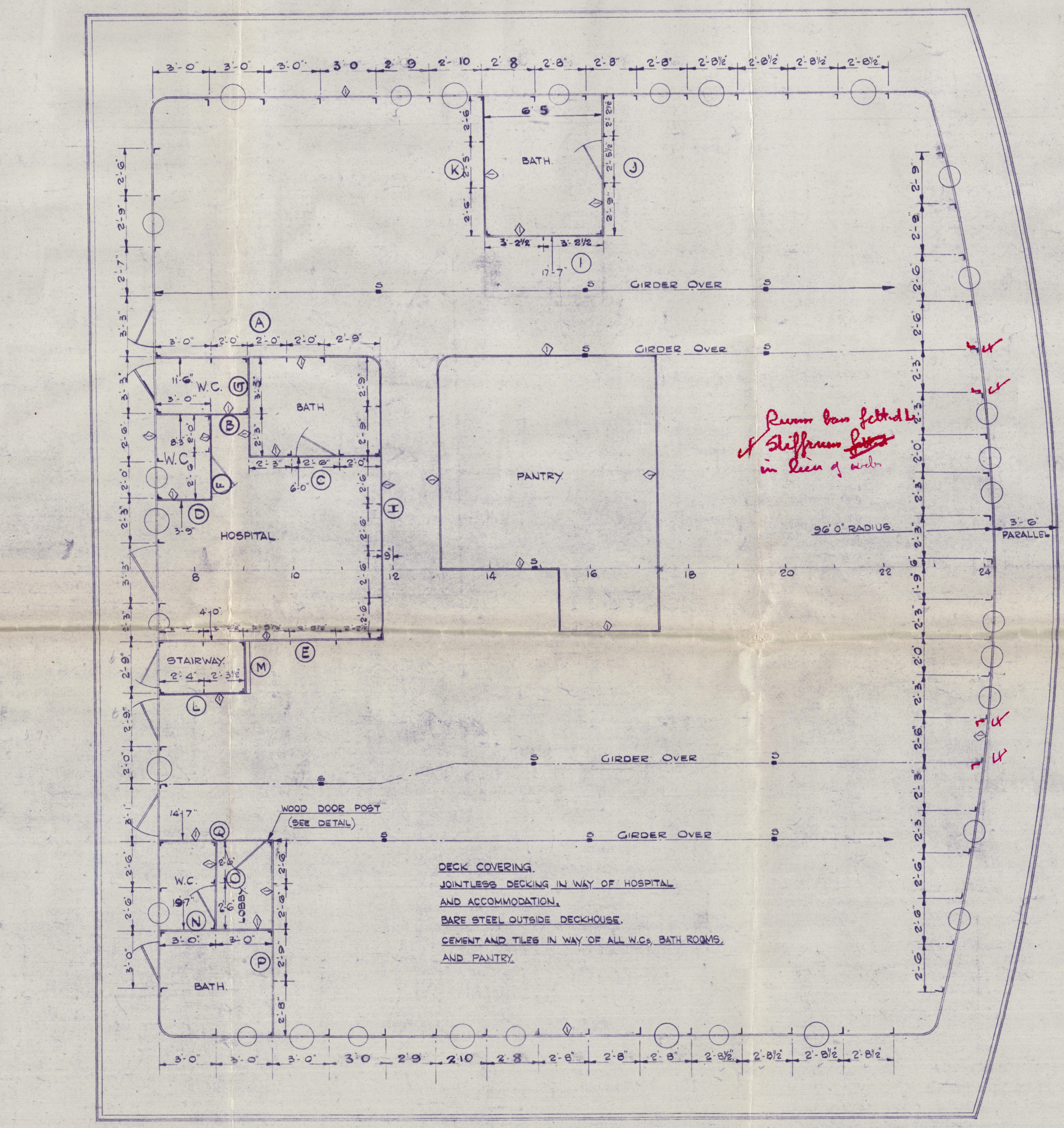
LOCATION	DIA	PITCH	HEAD	POINT
FOUNDATION BAR TO DECK			WELDED	
HOUSE	5/8	2 1/4	P	F
PARTITIONS	5/8	3 3/4	P	F
HOUSE SEAMS & LAPS	5/8	3	P	F
STIFFENERS	5/8	3	P	F
CHOCKS TO DECK	5/8	3	P	F
HOUSE	5/8	3	P	F
PARTITIONS	5/8	3	P	F
PARTITION CORNER BARS	5/8	3 3/4	P	F
PARTITIONS TO BEAMS	5/8	3 3/4	P	F
PARTITION STIFFENERS	5/8	5	P	F
BULKWARK TOP RAIL TO BULKWARK	5/8	5	P	F
STIFFENERS	5/8	4 1/2	P	F

MATERIAL	WPORT	MARK	LENGTH	BOTH	THK	REMARKS
PLATE	80 1/2	18	11	48 1/2	28	HOUSE SIDES
2	2	21	8	48 1/2		
2	3	31	8	48 1/2		
2	4	18	3			
2	5	12	2			
1	6	21	8	48 1/2		
1	7	10	8			
1	8	10	4	57	30	HOUSE FRONT
1	9	19	8	56		
1	10	15	10	57		
1	11	18	4	44		
1	12	14	4	44 1/2		
1	13	17	4	44		
2	14	16	7	39 1/2	25	BULKWARK
1	15	13	2	39		
1	16	14	5			
1	17	11	9	19 1/2	30	COAMING UPPER BRIDGE DE
1	18	7	3	24	28	AFT END OF HOUSE
1	19	7	4	71		
1	20	7	2	32		
1	21	7	1	9		
1	22	7	3	37 1/2		
1	23	7	3	37		
1	24	7	2	39 1/2		
1	25	7	1	13 1/2		
1	26	7	3	70		
1	27	7	3	58		
1	28	7	8	21	30	CORNER PLATES
1	29	8	9	15	28	DOOR COAMING PLATES
1	30	8	0	15		
1	31	8	9	6		
1	32	8	0	6		
1	33	7	4	39	3 1/2	
1	34	7	4	53 1/2		
1	35	7	4	54		
1	36	7	8	21		
1	37	7	4	60 1/2		
1	38	7	6	59		
1	39	7	3	29 1/2		
1	40	7	4	38		
1	41	7	3	51		
1	42	7	4	63		
1	43	7	3 1/2	38		
1	44	7	5	34		
1	45	7	3	46 1/2		
1	46	7	4	59 1/2		
1	47	7	1	23 1/2		
1	48	7	1 1/2	68 1/2		
2	49	7	1	36		
1	50	7	1	33		
2	51	7	4	40 1/2		
2	52	7	1	38		
1	53	7	1	30 1/2		
1	54	7	3	30		
1	55	7	3	35 1/2		
2	56	7	0	49 1/2		
1	57	7	2	37 1/2		
1	58	7	2	57		
1	59	7	2	65		
1	60	7	2	43		
1	61	7	4	56		
1	62	7	2	26 1/2		
1	63	1	0	78		



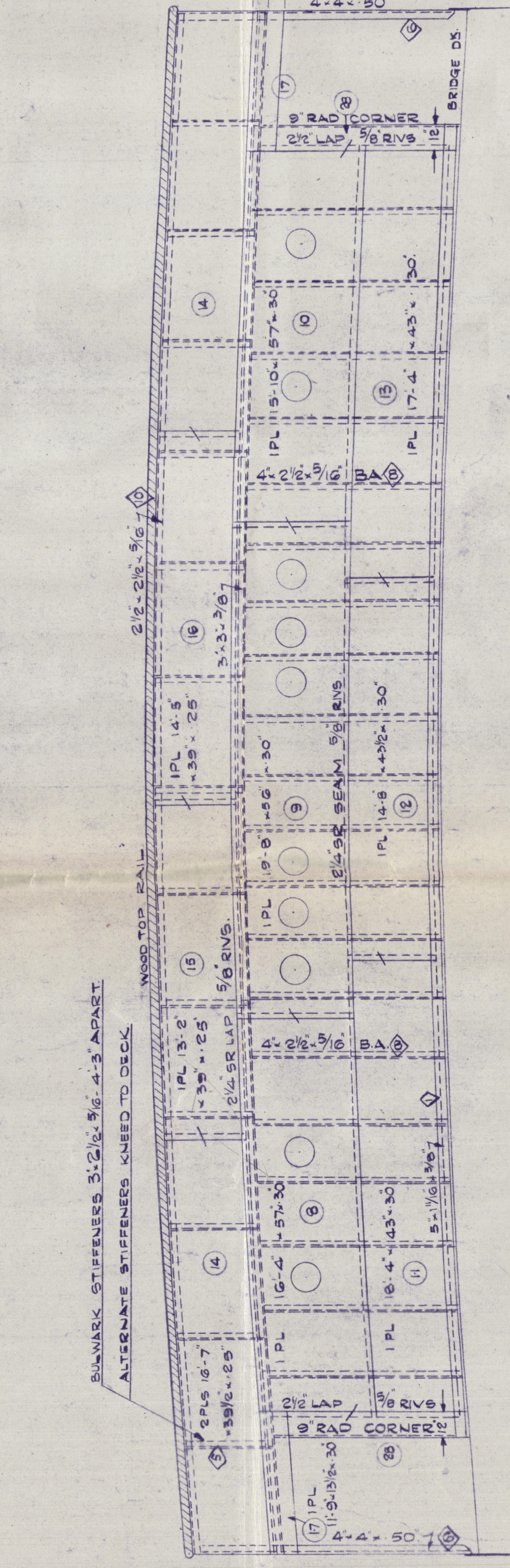
ELEVATION OF AFT END OF HOUSE  
LOOKING AFT.

STIFFENERS 4-2 1/2" x 5/8" EXCEPT WHERE MARKED.



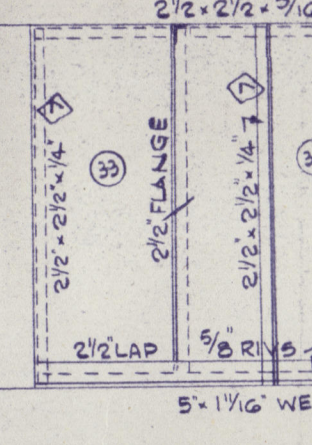
ELEVATION OF STARBOARD SIDE.  
LOOKING TO PORT.

STIFFENERS 4-2 1/2" x 5/8" EXCEPT WHERE MARKED.

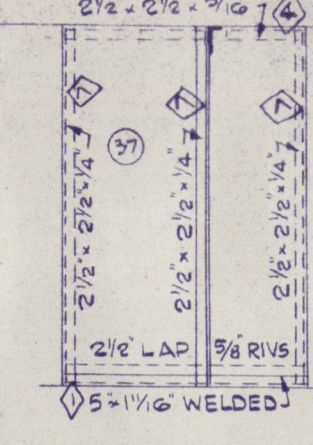


ELEVATION OF FORE END  
LOOKING AFT.

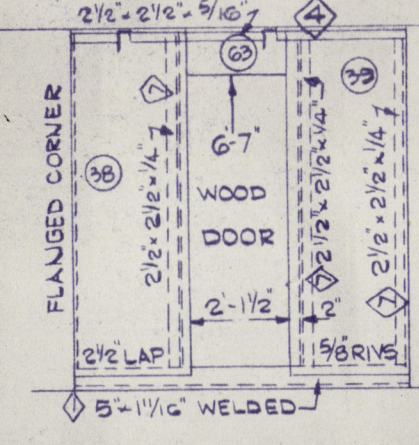
STIFFENERS 4-2 1/2" x 5/8" EXCEPT WHERE MARKED.



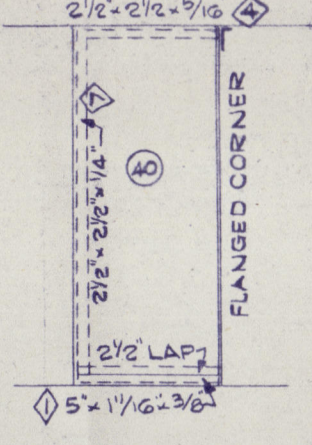
BULKHEAD "A"



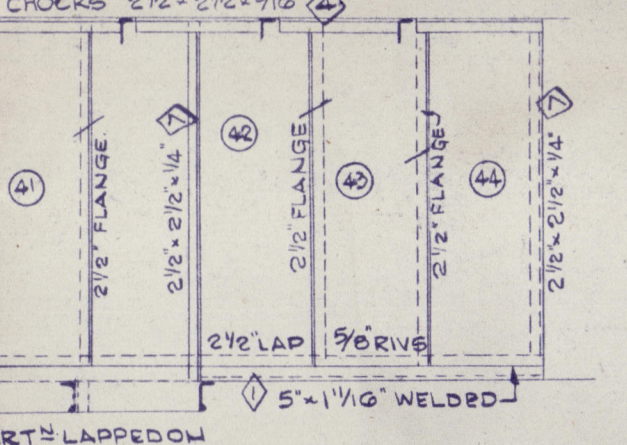
BULKHEAD "B"



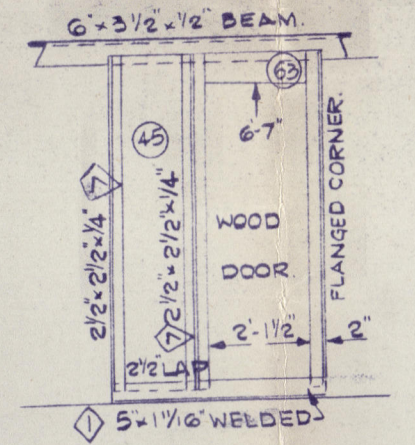
BULKHEAD "C"



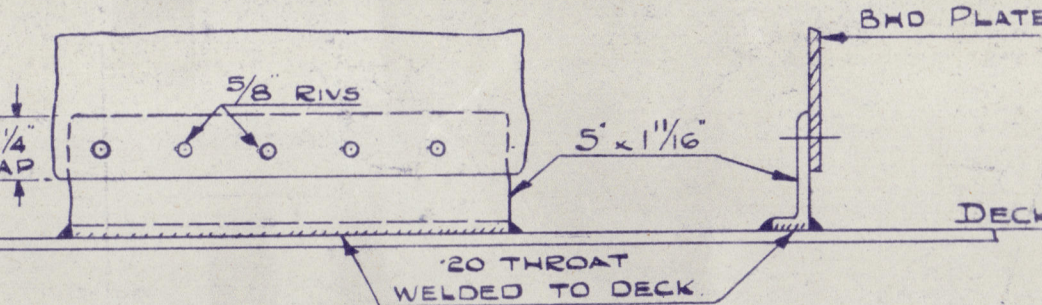
BULKHEAD "D"



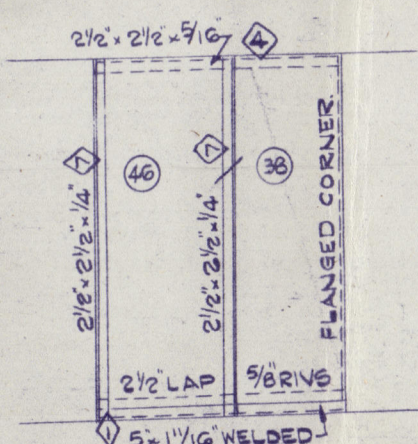
BULKHEAD "E"



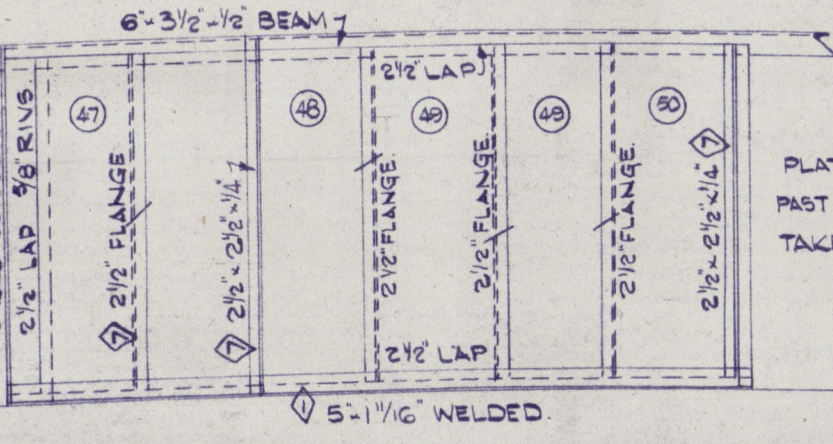
BULKHEAD "F"



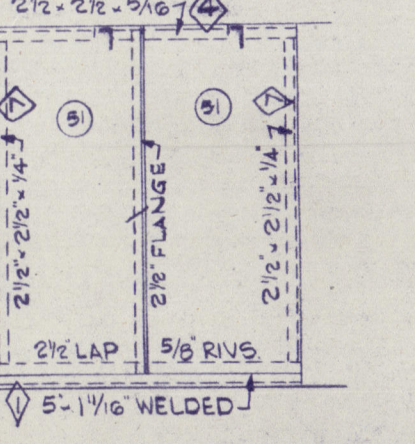
DETAIL OF FOUNDATION BAR



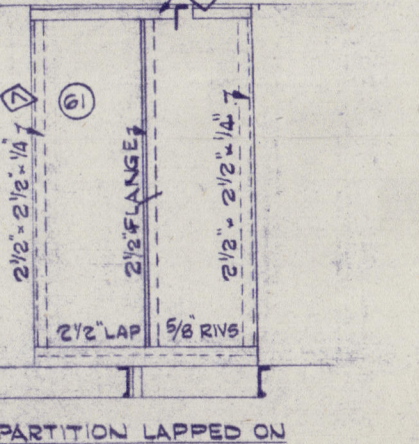
BULKHEAD "G"  
LOOKING FORWARD



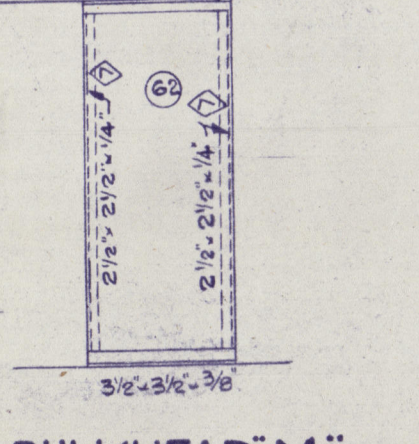
BULKHEAD "H"  
LOOKING FORWARD



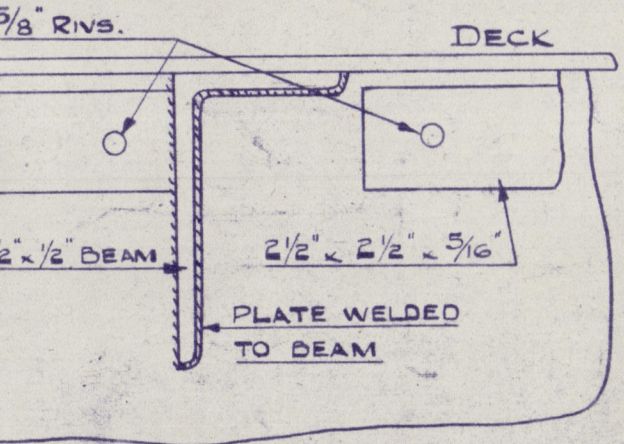
BULKHEAD "I"



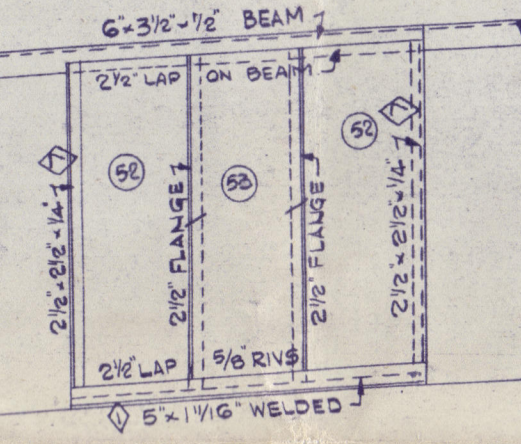
BULKHEAD "L"



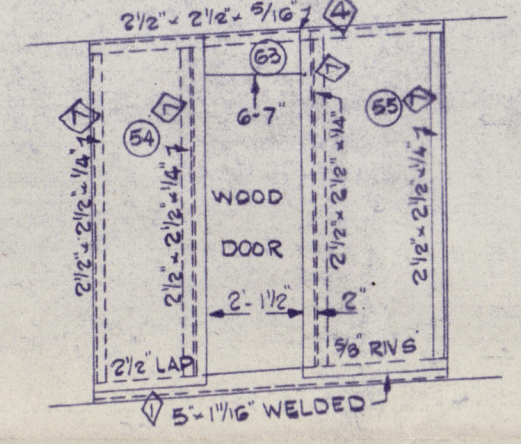
BULKHEAD "M"



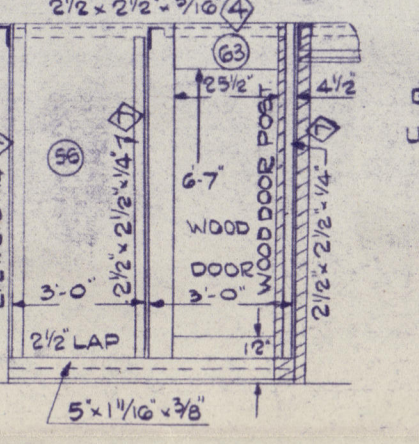
BEAM WELDED AT  
HOUSE SIDE.



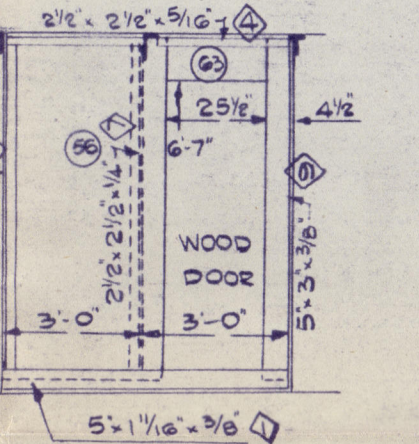
BULKHEAD "K"  
LOOKING FORWARD



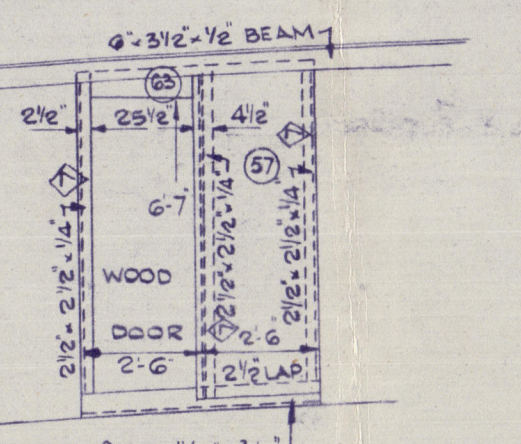
BULKHEAD "J"  
LOOKING FORWARD



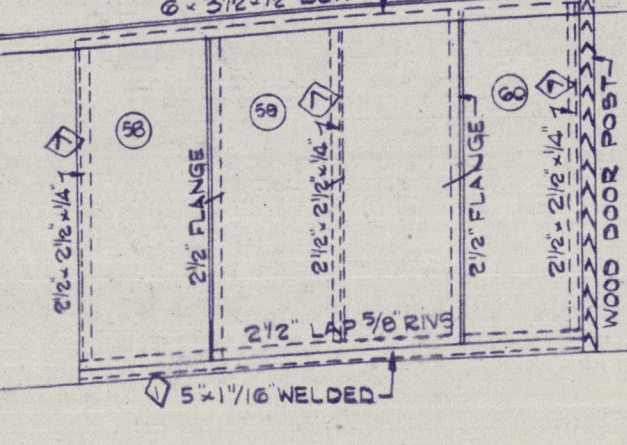
BULKHEAD "Q"



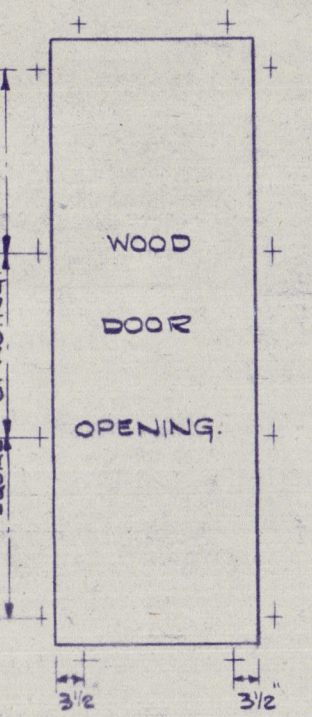
BULKHEAD "N"



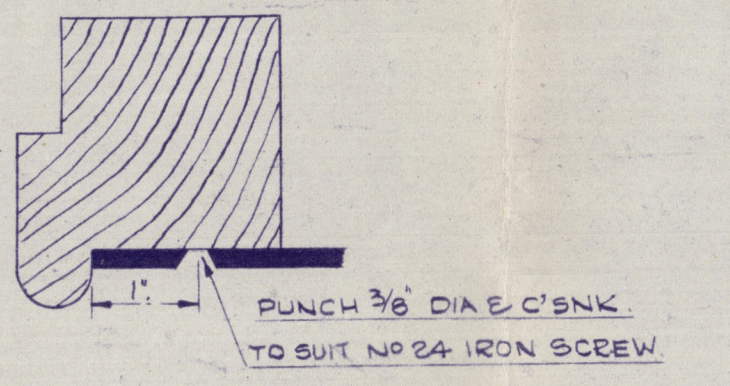
BULKHEAD "O"  
LOOKING AFT.



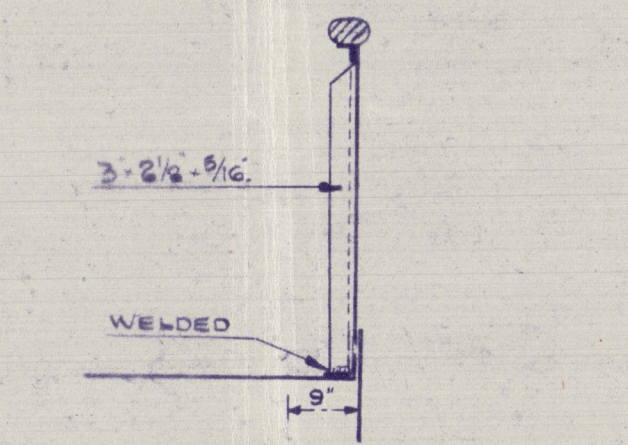
BULKHEAD "P"  
LOOKING AFT.



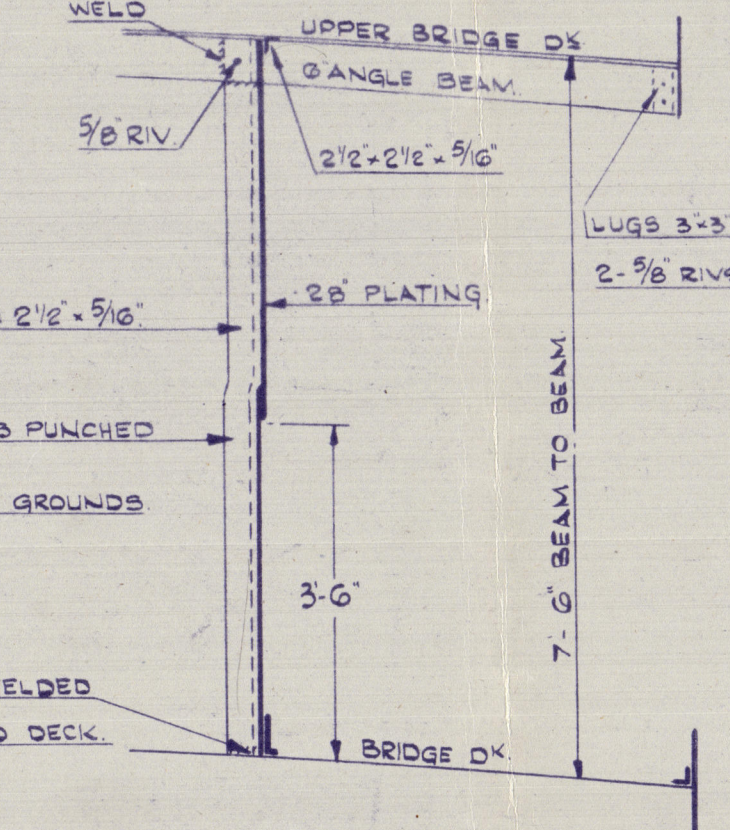
DETAIL OF PUNCHING FOR WOOD DOORS.



DOOR POST 14'-7" TO STARBW

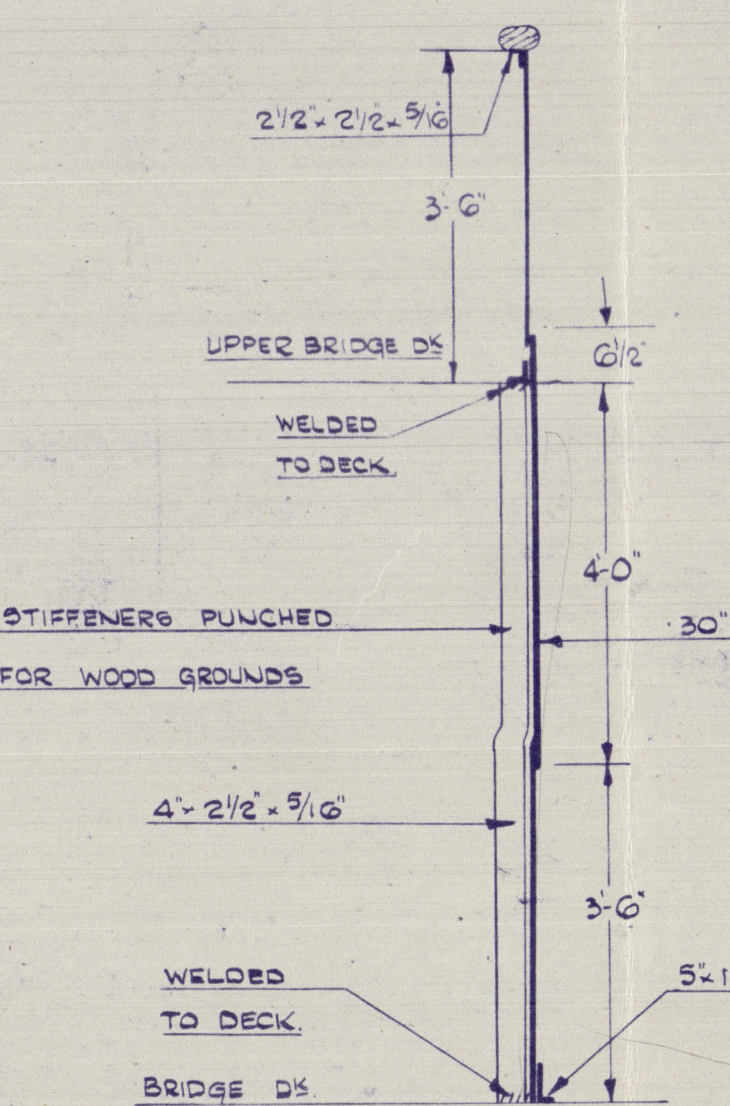


ALTERNATE BULKWARK  
STIFFENERS.

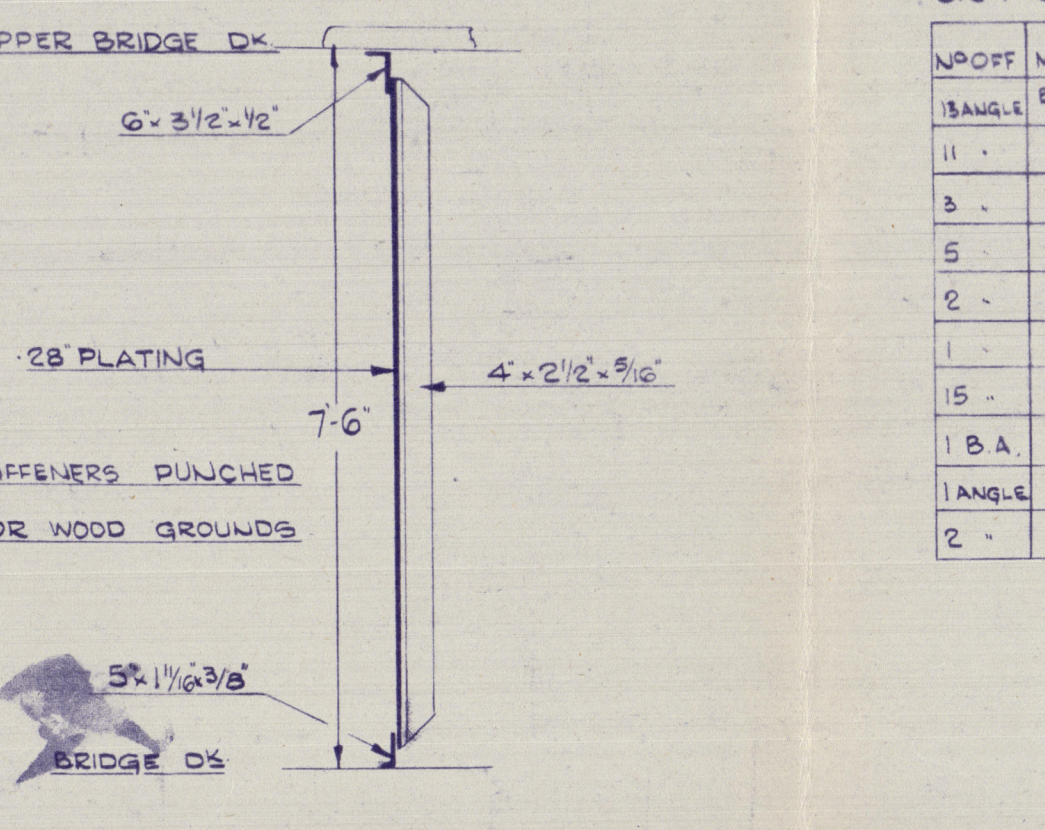


SECTION THRO' HOUSE SIDE.

SCALE 1/2" = 1 FOOT.



SECTION THRO' HOUSE FRONT.



SECTION THROUGH AFT END OF HOUSE

SCALE 1/2" = 1 FOOT.

WPORT	MARK	LENGTH	SCANTLING	LOCATION
1	2	30'-0"	5-1/2" x 3/8"	FOUNDATION BARS
1	3	30'-0"	4-2 1/2" x 5/8"	STIFFENERS FORE END SIDES
1	4	28'-0"		AFT END
1	5	34'-0"	2 1/2" x 2 1/2" x 5/8"	DECK CHOCKS
1	6	28'-0"	3' x 2 1/2" x 5/8"	BULKWARK STAYS
1	7	22'-0"	4' x 4' x 60	SIDE STAYS
1	8	15'-3"	2 1/2" x 2 1/2" x 1/2"	CORNER BARS & STIFFENERS (PARTITIONS)
1	9	22'-0"	4' x 2 1/2" x 5/8"	STIFFENERS ON HOUSE IN WAY OF GIRDERS
1	10	7'-8"	5' x 3' x 3/8"	SIDE OF DOOR
1	11	30'-0"	2 1/2" x 2 1/2" x 5/8"	TOP BAR BULKWARK



~~18~~  
~~110~~  
HARLAND & WOLFF LTD.  
BELFAST

No. 1173/49  
TITLE House on Bridge  
Deck  
DATE APPROVED 24/3/43

Belfast Report No 13536 - Narica



4



© 2020

Lloyd's Register  
002984-002996-0053  
Foundation