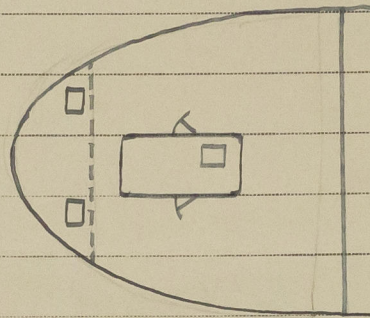
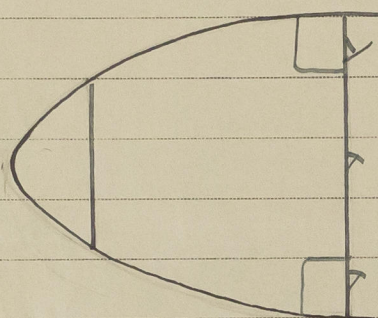


9 MAR 1950
25696

Lloyd's Register of Shipping.

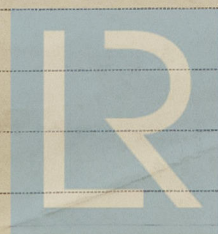
Ship's Name S.S. "BALTARA"Official No. 142356Memorandum of alterations reported since ship was surveyed for assignment of Load Lines
in -Alterations to Poop Accommodation.Freeboard DeckSuperstructure Deck

Poop Bhd. One steel hinged door now
fitted: Manipulated both sides.
Opening 25" x 53" x 21" sill.

Deckhouse fitted 18'0" x 11'0" with
door (p. & s.) 24" x 54" x 18" sill.
Doors manipulated both sides.
Companionway fitted to accommodation
side of opening in deck 4'0" x 2'7".
Store hatchway (p.s.) on poop found
removed and refitted further aft and
of size 23" x 23" x 15" coaming.

MacLeod
Grimby 22/3/50

G.H.W.
13 MAR 1950



© 2020

Lloyd's Register
Foundation