

25 MAR 1943

Rpt. C. 11 (Contd.)

Index No.

18090

## Lloyd's Register of Shipping.

Ship's Name

"JERNLAND" ~~Lago~~ *Naga*

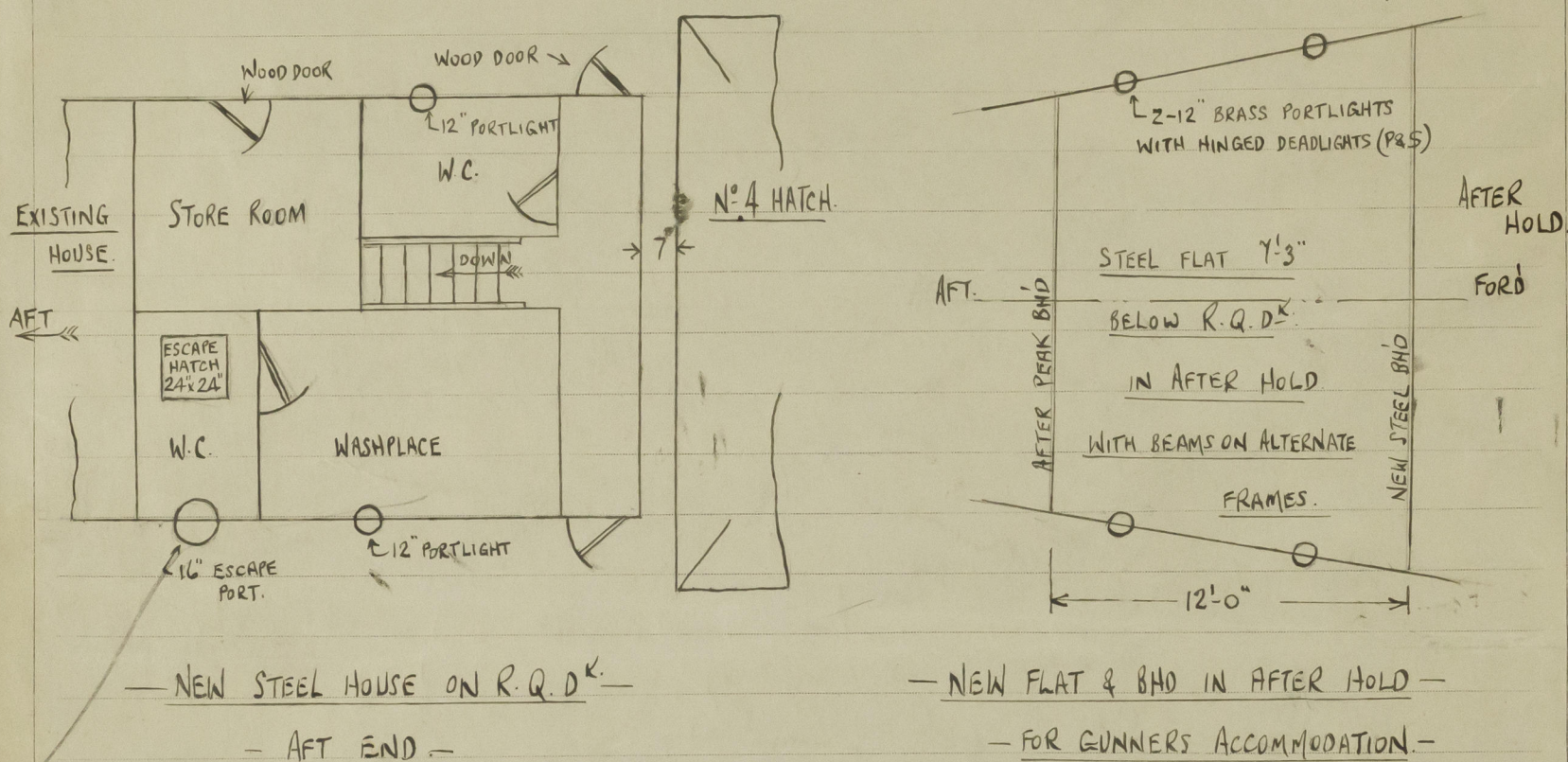
Official No.

✓

Memorandum of alterations reported since ship was surveyed for assignment of Load Lines in

Gunnery Accommodation has been constructed in the after hold, and on the R.Q.D<sup>K</sup> aft of after hatch end.

N<sup>o</sup> 4 Hatch has been reduced in length and new deck beams and plating fitted in way, the N<sup>o</sup> 4 Hatch now being 16'-0" in length.



A W.C. has been fitted in new deckhouse as shown P.S. discharging thro' a 4" dia brass non-return valve 3'-3" below deck, in ships side.

The three wood doors in the deckhouse sides are strongly constructed, with 18" coamings, the door openings being 4'-0" x 18".

2-6" cowl ventilators have been fitted at port and starboard sides of deckhouse to ventilate gunners accom' below, these vents coamings being 3'-0" high and supplied with wood plugs and canvas covers.

A 2-1/2" drain has been fitted in the floor of the starboard W.C. discharging thro' a 2-1/2" brass non-return valve 3'-3" below the deck, in ships side.

2-12" dia brass hinged porthlights with hinged deadlights have been fitted port & starboard in ships side below R.Q.D<sup>K</sup> to gunners accommodation.

*L. Donald*  
23<sup>rd</sup> March 1943.

A copy has been placed onboard vessel,

*L. Donald*

Noted.

© 2020

Lloyd's Register  
Foundation