

STERN FRAME & RUDDER:

S. S. N^{OS} S2 & S3 & S4

CLASS - LLOYDS 100 A.I.

19.6.19
5.7.19 (S84)

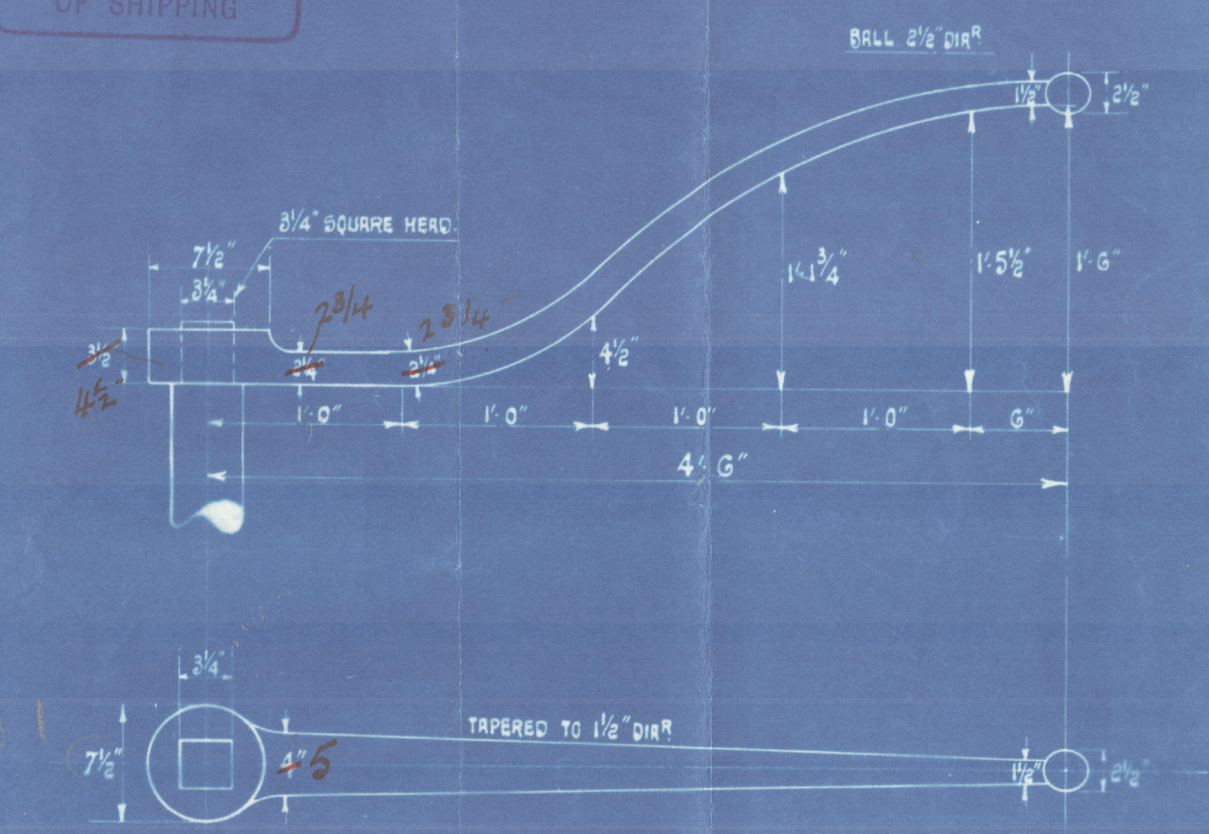
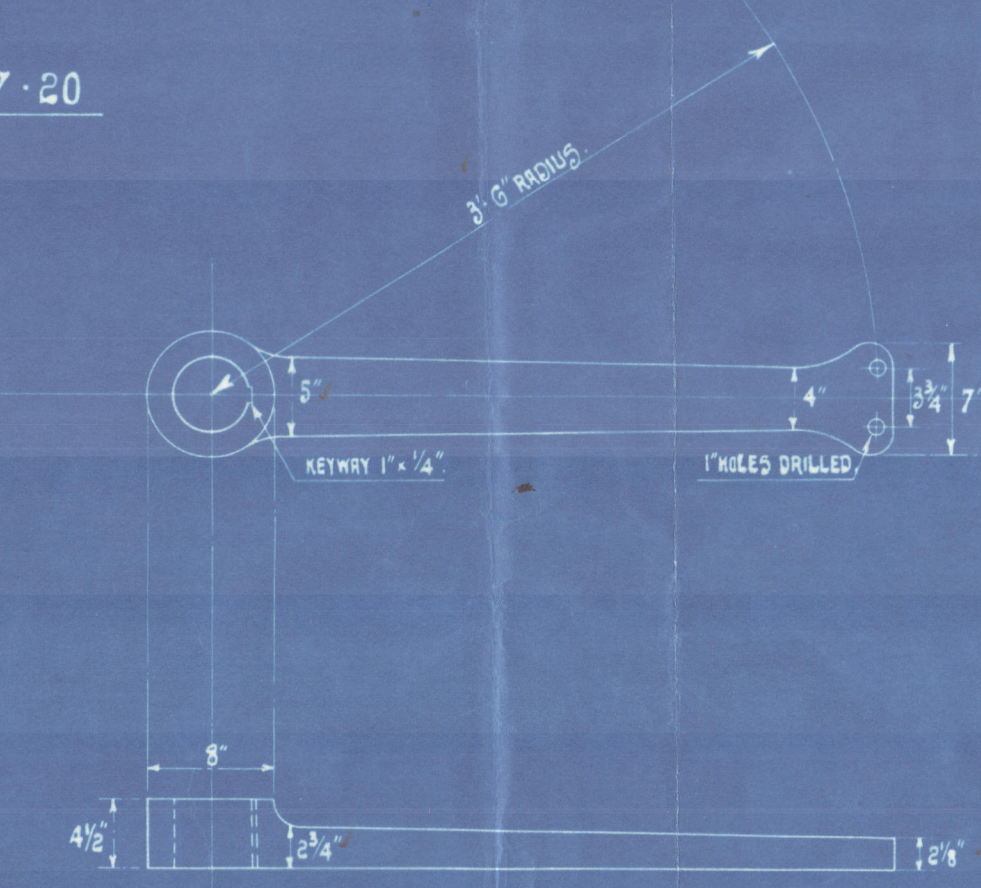
HT 27 YL 228 28 74
241.1 27 70027 144

$$A \times D$$

$$39'6" \times 1'95 = 77'20$$

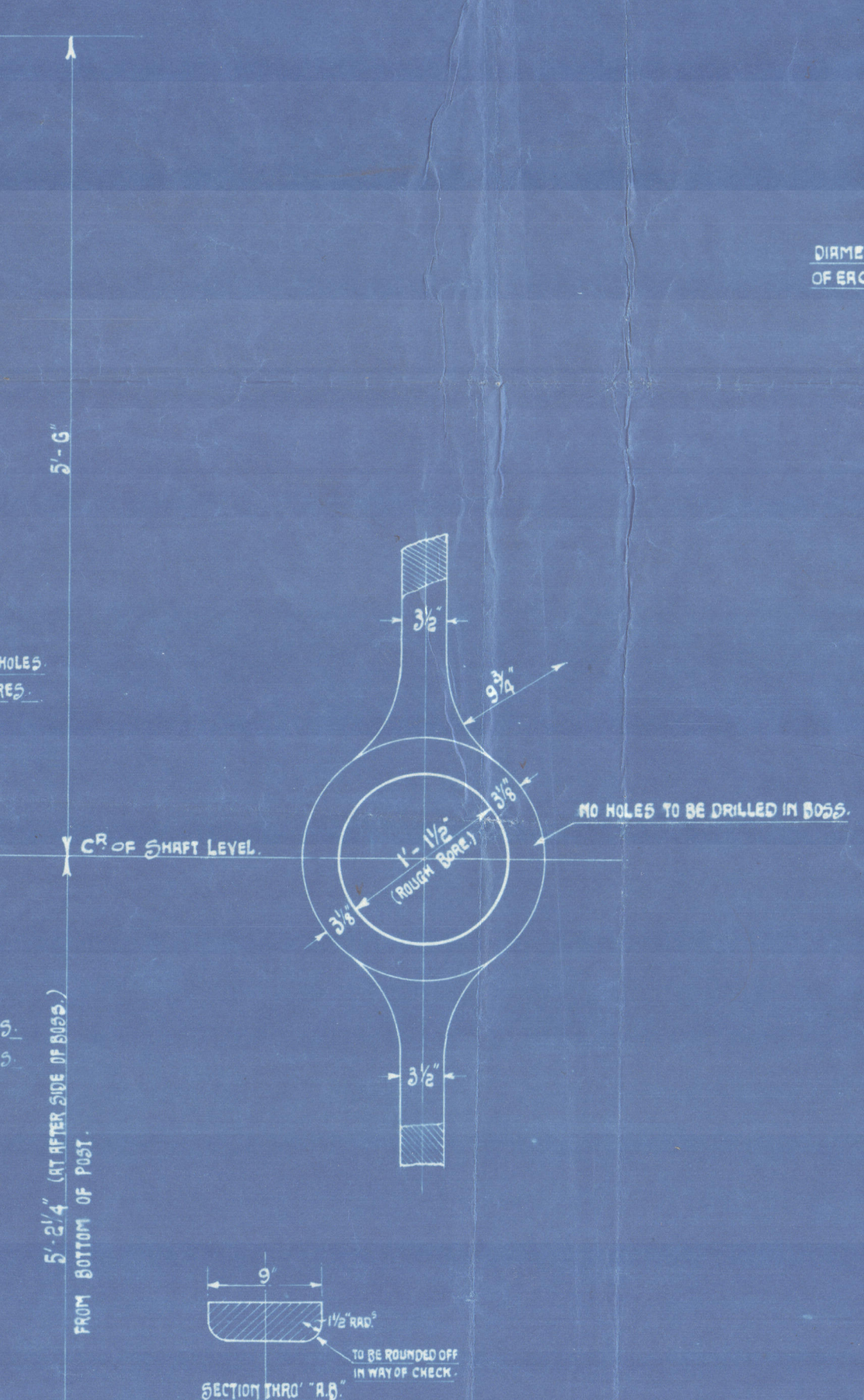
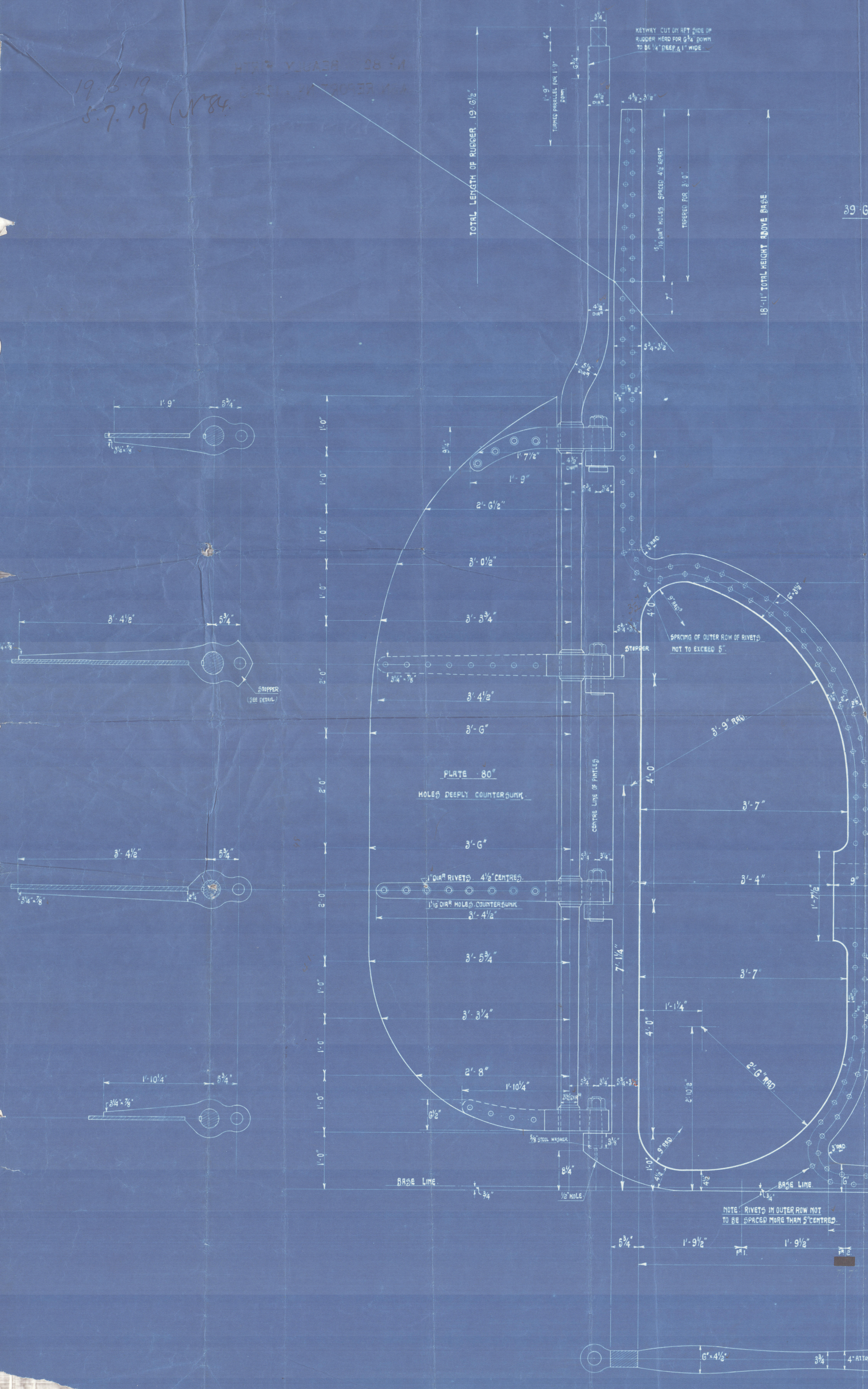
SCALE 1" = 1 FOOT

LLOYD'S REGISTER
12-16-19
ABERDEEN OFFICE
0.12
OF SHIPPING

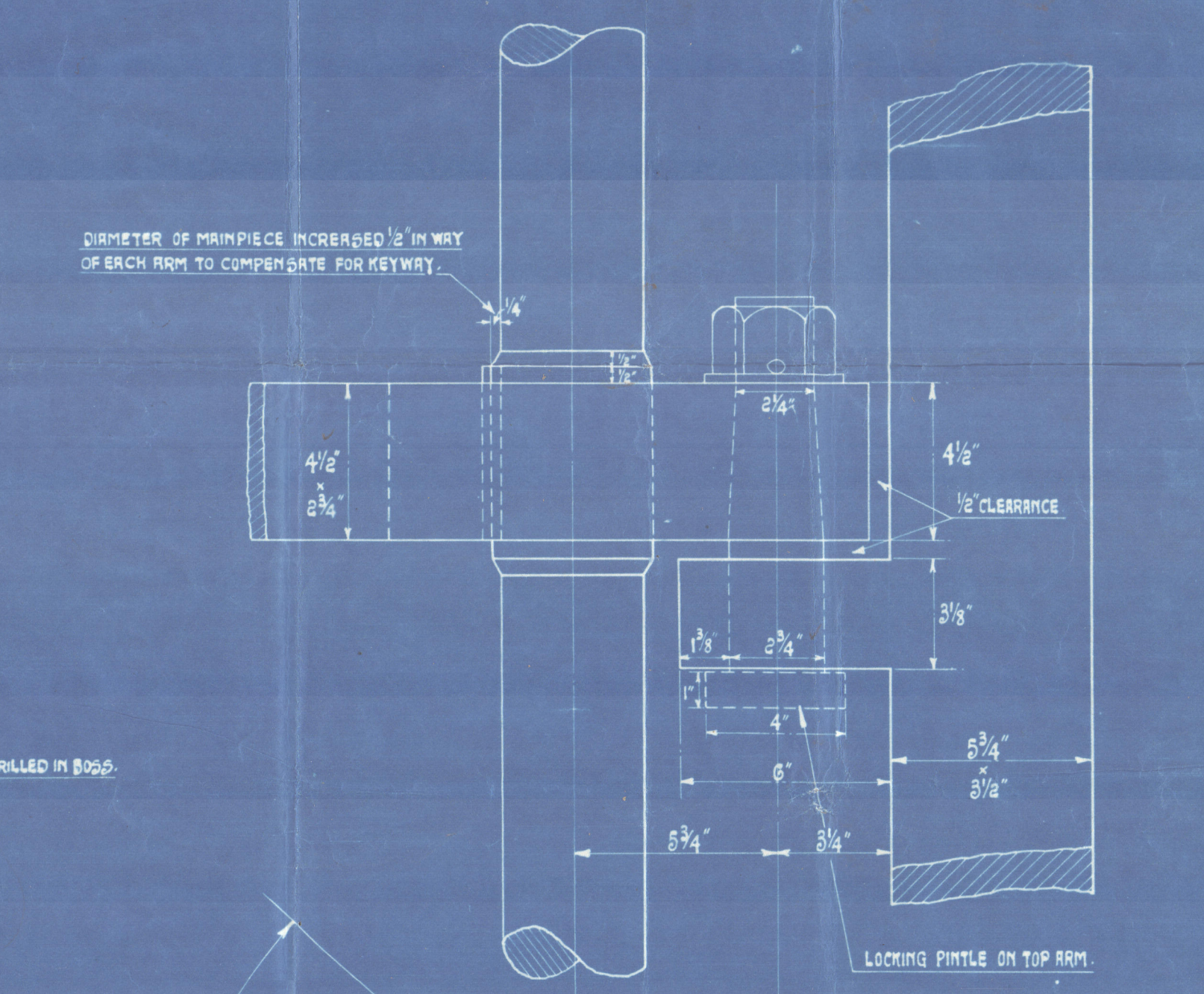


DETAIL OF QUADRANT TILLER
SCALE 1" = 1 FOOT

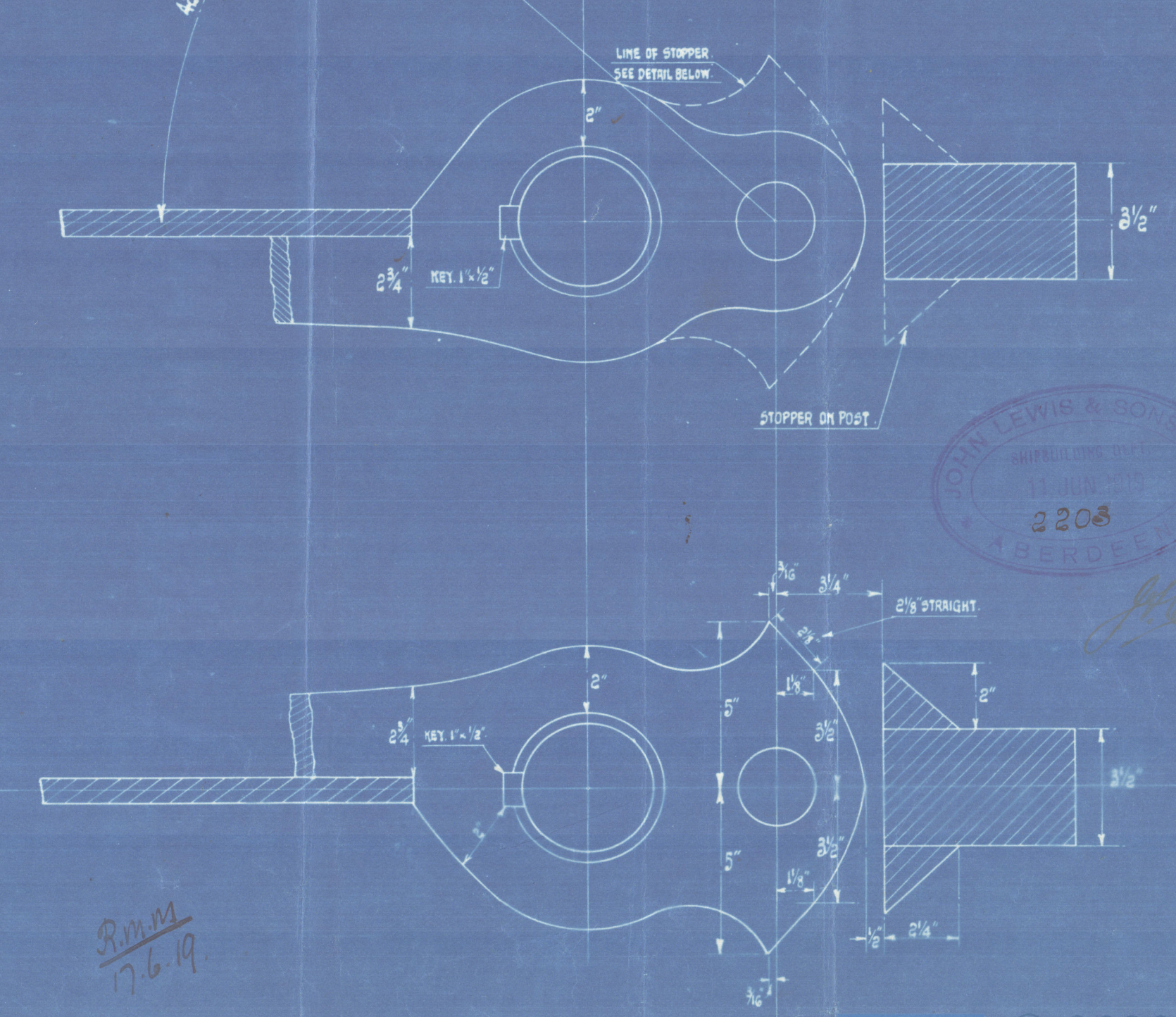
DETAIL OF HAND TILLER
SCALE 1" = 1 FOOT



SECTION THRU 'A-A'



DETAIL OF PINTLE & GUDGEON
SCALE 1" = 1 FOOT



DETAIL OF STOPPER ON POST AND RUDDER
SCALE 1" = 1 FOOT

JOHN LEWIS & SONS
ENGINEERS
2208
ABERDEEN

002178-002988-0125

JOHN LEWIS + SONS LTD

N^{os} 82 - 83 + 84.

STERN FRAME + RUDDER.

N^o 82. "BEAULY FIRTH"

ABN. REPORT N^o = 12416.

BANNTRADER

✓



© 2020

Lloyd's Register
Foundation

002978-002988-0125