

— T.S.S. N^o 655. —

PROPOSED MODIFICATION TO EXISTING RUDDER.

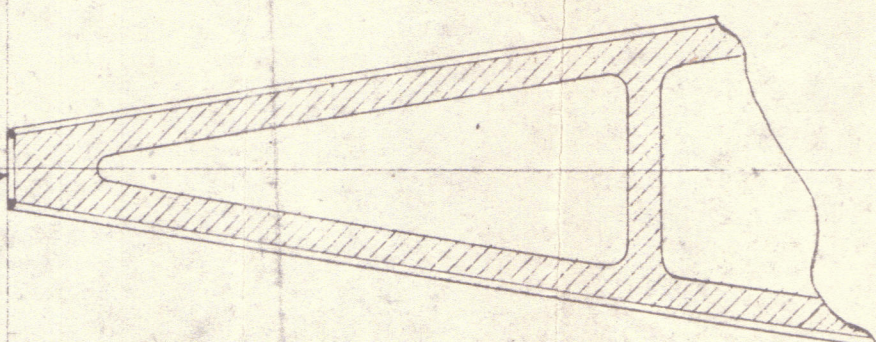
SCALE $\div 1 = 1$ FOOT.

— SECTION AT TOP OF RUDDER. —

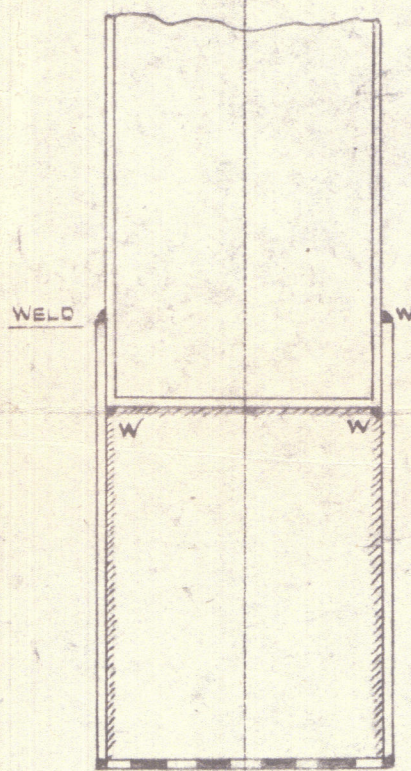
.75 AFTER END

PLATE WELDED

TO SIDE PLATES.



SECTION
THROUGH
LINE A.A.



.75 AFTER END

PLATE WELDED

TO SIDE PLATES.

6.3

3.9

.50 SIDE PLATES.

.50 WEB.

.50 BOTTOM PLATE

6.9

3.9

3.4

7.1

BASE LINE

10.6

3.0

CENTRE LINE OF RUDDER



13.5 x 8.25 x 3.75
6.70 x 2.25 x 7.1

417
109
525

1188
12/2/46

11.72 12/2/46

ABOUT 4.2

3/4 END PLATE

.50

.50

NEW PORTION
WELDED TO BOTTOM
OF RUDDER

22.9.47



© 2020
Lloyd's Register
Foundation

002978-002988-0081

002978-002988-0087

~~2~~

"GOMPHINA" ★

RECORDS DEPT.,
LONDON

8

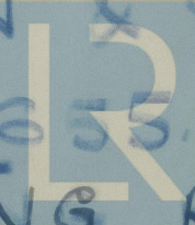
J. L. Thompson

J. L. THOMPSON & SONS

YARD NO. 655

MODFN. TO EXISTING RUDDER

002978-002988-0087



Lloyd's Register
Foundation

J. L. THOMPSON & SONS.
YARD NO. 655.
PROPOSED MODIFICATION
TO EXISTING
RUDDER.

002978-002988-0087



© 2020

Lloyd's Register
Foundation