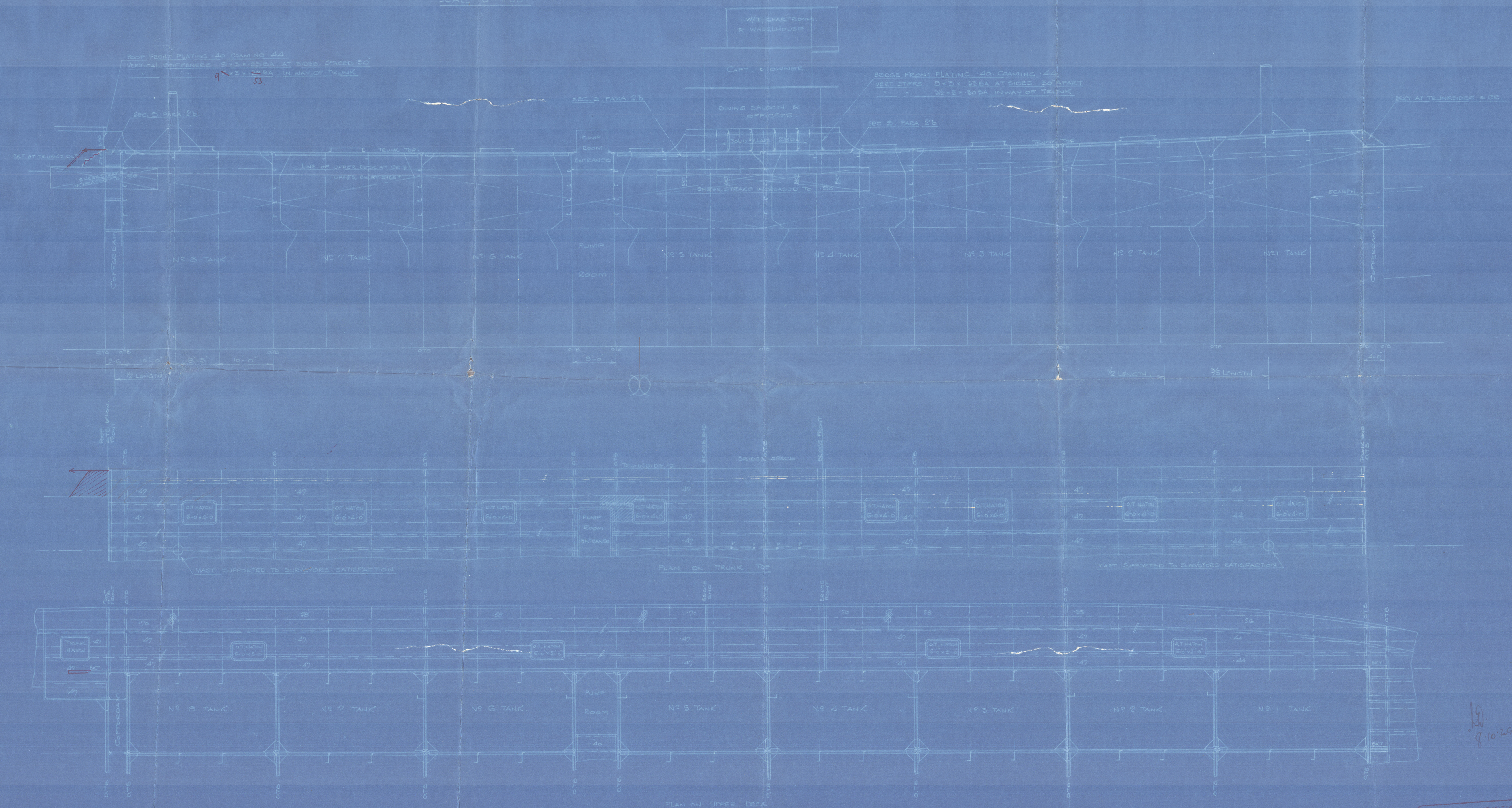


105741061-2-3-4  
N<sup>o</sup> ~~105741061~~ SHIPS

# PROFILE & DECK

PLAN SHOWING AMENDMENTS DUE TO TRUNK ON DECK

SCALE 1/8" = 1 FOOT



NEWCASTLE-UPON-TYNE.  
No. 6670 DATE 4-10-29  
WALKER SHIPYARD

8.10.29



9.

See W.C. Armstrong, Whitworth & Co. L.

nos 1057-61-62-63-64

Profile & Deck showing Tank on  
deck added.

1069.

M.V. "ASHMORE"

NEWCASTLE ON TYNE.

Report No.

File with

1057.

Beik

Low gear



© 2020

Lloyd's Register  
Foundation

002970-002977-0187