

NUMERALS

L x D ----- 2475 ✓
L x (B+D) ----- 7012 ✓

EQUIPMENT.

1ST BOWER ANCHOR 10 1/2 CWTs - STOCKLESS ✓
2ND " " 9 3/4 " " ✓
KEDGE ANCHOR 4 " EX STOCK ✓
150 FMS 1 3/8" STUD LINK CABLE ✓
60 " 6" HAWSER ✓
60 " 5 1/2" WARP ✓

MIDSHIP SECTION STEEL SCREW TRAWLER

No. 1168

165'-0" B.P. x 27'-6" MLD x 15'-0" MLD ✓
TO CLASS 100.A.I. 5TH TRAWLER ✓

SCALE 2" = 1 FOOT

RIVETING

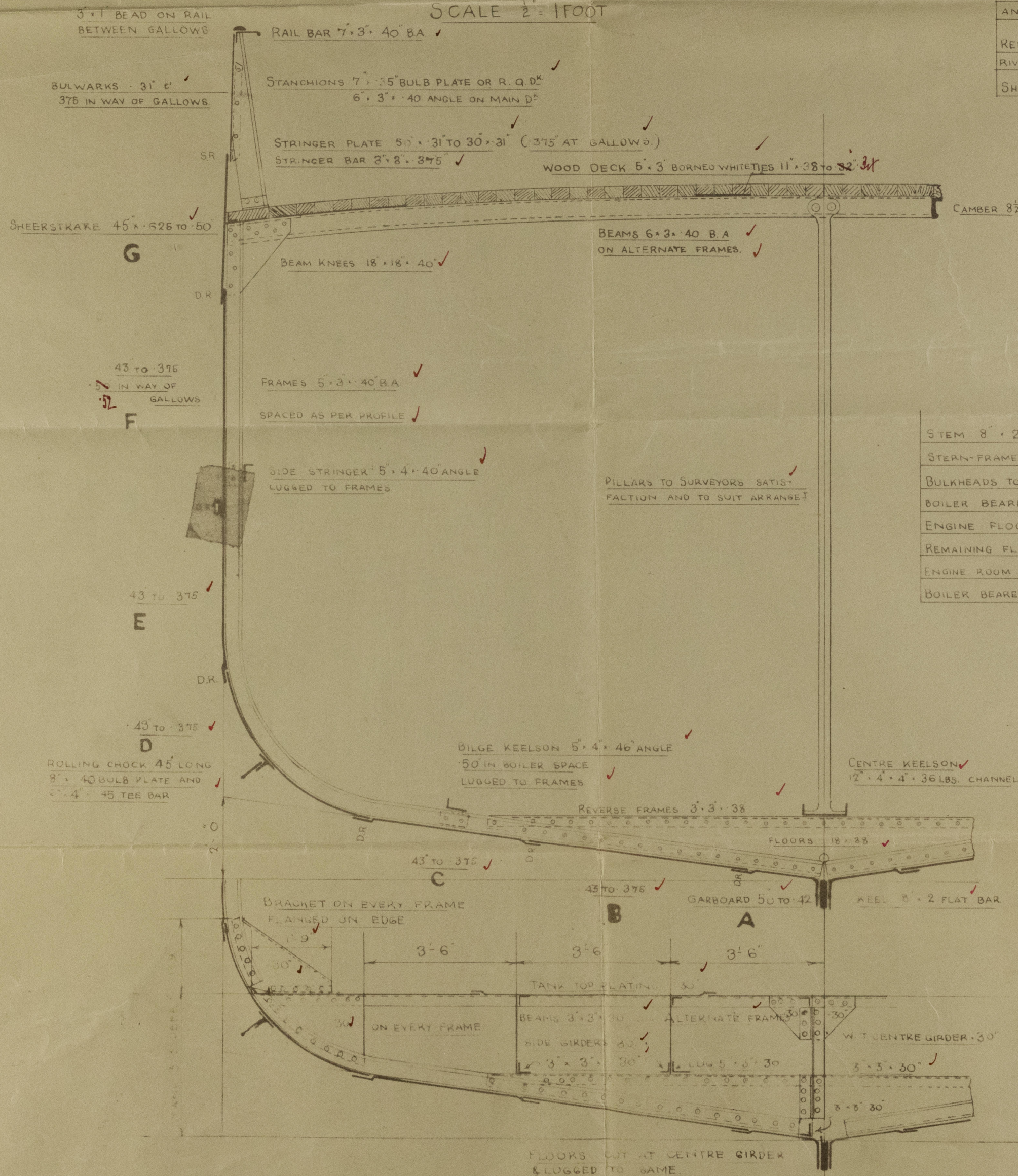
ALL LANDING EDGES TO BE DOUBLE RIVETTED ✓
EXCEPT TOP EDGE OF SHEERSTRAKE WHICH IS
TO BE SINGLE RIVETTED ✓

BUTTS OF GARBOARD AND SHEERSTRAKE
STRAPPED AND TREBLE RIVETTED FOR 1/2 LENGTH, ✓
STRAPPED AND DOUBLE RIVETTED AT ENDS ✓

BUTTS OF E.E.F. STRAKES OVERLAPPED AND
TREBLE RIVETTED FOR 1/2 LENGTH, OVERLAPPED ✓
AND DOUBLE RIVETTED AT ENDS ✓

REMAINDER OF BUTTS OVERLAPPED AND DOUBLE
RIVETTED ALL FORE AND AFT ✓

SHELL RIVETS TO BE STEEL - REMAINDER IRON ✓



© 2020

Lloyd's Register Foundation

002956-002969-0282

Cochrane & Sons Ltd.

Yard No 1162

Midship Section

HULL

"King Sal."

~~798~~

(2)

002956-002969-0282

PLAN No. 4158
FOR ENCLOSURE TO
Lloyds Register of Shipping
Hull FROM
COCHRANE & SONS, LTD.
SHIPBUILDERS, SELBY.
DATE *24/4/36*

002956-002969-0282



© 2020

Lloyd's Register
Foundation