

NUMERALS

L x D ----- 2475
L x (B+D) ----- 7012

EQUIPMENT.

1ST. BOWER ANCHOR 10¹/₄ CWTs. - STOCKLESS
2ND " " 9³/₄ " " "
KEDGE ANCHOR 4 " EX STOCK
150 FMS. 1³/₁₆ STUD LINK CABLE.
60 " 6" HAWSER
60 " 5¹/₂" WARP.

MIDSHIP SECTION STEEL SCREW TRAWLER.

No. 1168

165'-0" B.P. x 27'-6" MLD x 15'-0" MLD.

TO CLASS 100.A.I. STM TRAWLER.

SCALE 1/2" = 1 FOOT

RIVETING

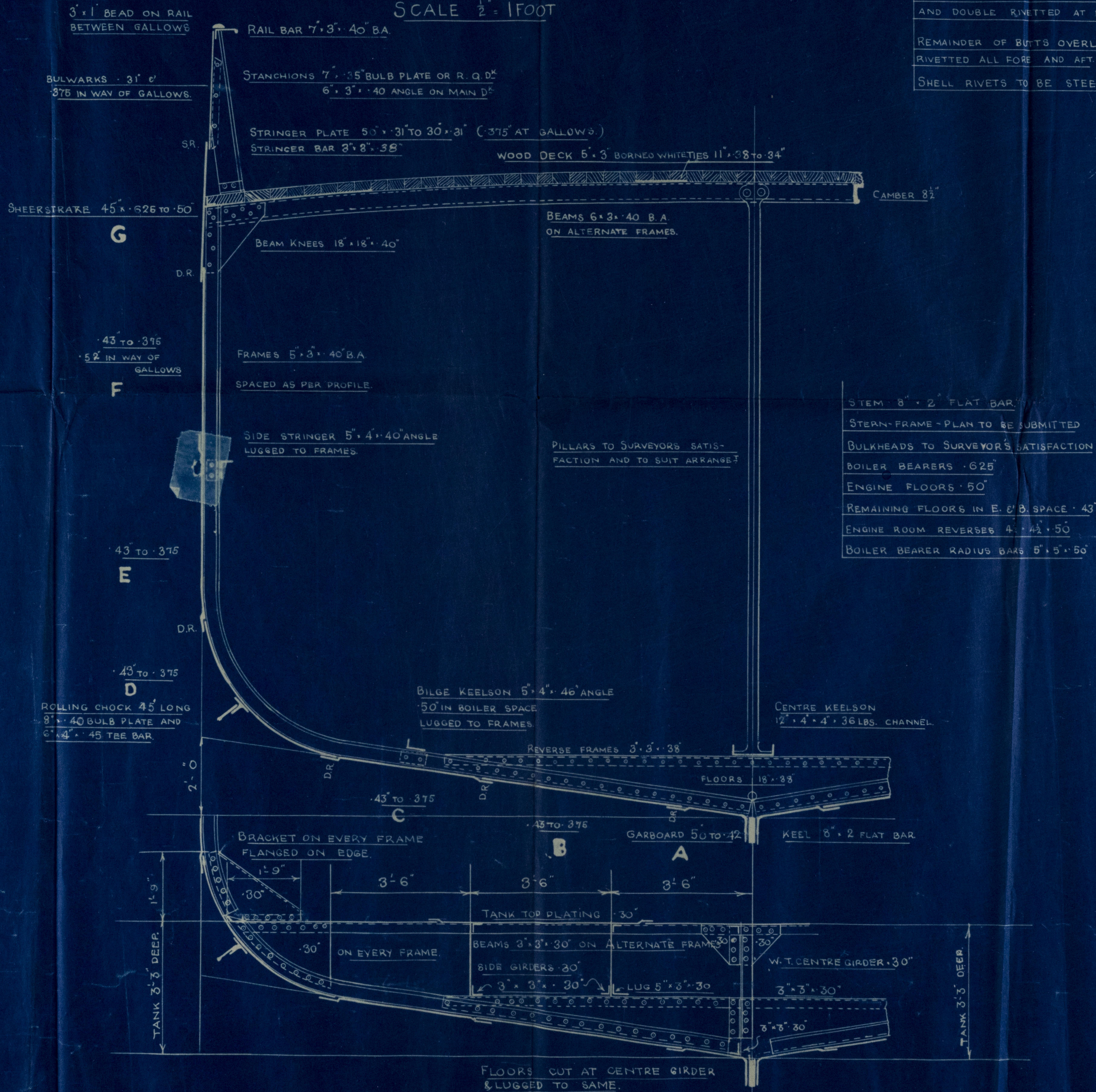
ALL LANDING EDGES TO BE DOUBLE RIVETTED
EXCEPT TOP EDGE OF SHEERSTRAKE WHICH IS
TO BE SINGLE RIVETTED.

BUTTS OF GARBOARD AND SHEERSTRAKE
STRAPPED AND TREBLE RIVETTED FOR 1/2 LENGTH,
STRAPPED AND DOUBLE RIVETTED AT ENDS.

BUTTS OF E.E.F. STRAKES OVERLAPPED AND
TREBLE RIVETTED FOR 1/2 LENGTH, OVERLAPPED
AND DOUBLE RIVETTED AT ENDS.

REMAINDER OF BUTTS OVERLAPPED AND DOUBLE
RIVETTED ALL FORE AND AFT.

SHELL RIVETS TO BE STEEL - REMAINDER IRON



PLAN No. 4757

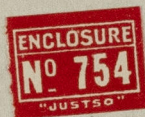
FOR ENCLOSURE TO

Lloyd's Register of Shipping
Hull

FROM

COCHRANE & SONS, LTD.
SHIPBUILDERS, SELBY.

DATE 28/5/31



King Sal 1168

Midship Section
(as built.)

S.S. K. "King Sal"

HULL REPORT No. 47183



© 2020

Lloyd's Register
Foundation

002956-002969-0281