

Rpt. 9

E4 MAR 1959

Date of writing report 16. 2. 59.

Received London

Port Liverpool.

No. 151190

Survey held at Birkenhead.

No. of visits 22

First date 16. 12. 58.

Last date 2/2/59

REPORT OF PERIODICAL SURVEYS & REPAIRS OF MACHINERY

No. in R.B. 83013 S.S. Name M.V. "TROCHISCUS"

Owners Shell Petroleum Co. Ltd.

Gross tons 10685

Date of build 1944

Engines made 1944

Managers

Port of Registry London

By General Electric Co.

Type Steam turbine connected to elec. motor & sc. shaft

No. of Main Engines 2 No. of Screws 2

No. of Main Boilers 2WTB W.P. 500lb. Spt 464lb

Records of Survey & Special Notations as per Register Book

No. of Aux./Donkey Boilers - W.P. -

Surveyed Afloat or in Dry Dock Both.

Nature of Survey M.B.S. C.S. & Dkg.

Was Damage Report issued? No. Int. Cert. Yes.

Last Report (For Head Office only)

Hull		Machinery	
100A1	3.58	LMC CS	1.57
SS Bkn.	1.57	BS M	12.57
		TS CL	11.56
carrying petroleum in bulk	s.p.s.		11.56

The condition of any of the following items is to be described as "good" only when the part has been examined, found or placed in good condition, and is considered to be acceptable until the due date of the next Periodical Examination. Where it is considered that re-examination or repairs should be effected before the due date of the next Periodical Examination a distinguishing mark thus † should be inserted against the item and the circumstances and action recommended described fully under "defects and repairs". At part or complete Special Surveys those items which are not applicable to the ship should be cancelled with a black line; this need not be done when the machinery is on a continuous survey basis. When any part has been subjected to pressure test this should be stated. Engine parts when referred to by numbers should be counted from forward.

DOCKING Propellers Good. Wear Down of Stern Bushes .200" Oil Glands - Sea Connections -

Fastenings Good. Has Screwshaft ~~Tube~~ been drawn? No. Date of Examination - Has Shaft been changed? -

Has Shaft now fitted been previously used? - Has Shaft now examined/fitted a continuous liner? - Approved oil gland? -

MAIN ENGINES (Recip. Steam or I.C.)

PORT

STARBOARD

1 Cyls., Covers, Pistons & Rods

2 Valves & Gears

3 Connecting Rods, Top Ends & Guides Side Centre

4 Crankpins & Bearings Side Centre

5 Journals & Bearings

MAIN ENGINE DRIVEN AIR COMPRESSORS

6 Cyls., Covers, Pistons & Rods

7 Connecting Rods & Top Ends

8 Crankpins & Bearings

9 Journals & Bearings

10 Coolers & Safety Devices

MAIN ENGINE DRIVEN SCAVENGE PUMPS

11 Cyls., Covers, Pistons & Rods

12 Connecting Rods & Top Ends

13 Crankpins & Bearings

14 Journals & Bearings

15 Levers

16 SCAVENGE BLOWERS

17 SUPERCHARGERS

MAIN TURBINES

18 Casings, Rotors, Blading, Bearings & Thrusts

19 EXHAUST STEAM TURBINES (WITH RECIP. ENGINES)

20 STEAM COMPRESSORS

21 CLUTCHES & HYDRAULIC COUPLINGS

22 REDUCTION GEARING

23 THRUST BLOCKS, SHAFTS & BEARINGS

24 INTERMEDIATE SHAFTS & BEARINGS

25 HOLDING DOWN BOLTS & CHOCKS

26 CONDENSERS (MAIN & AUX.)

27 STEAM RE-HEATERS

28 DE-SUPERHEATERS

29 STOP & MANOEUVRING VALVES

30 MAIN ENGINE DRIVEN PUMPS

31 CRANKCASE DOORS & EXPLOSION RELIEF DEVICES

Have Main Engines been tested working and manœuvring?

OPINION OF MACHINERY AND RECOMMENDATIONS The machinery of this vessel, as far as now seen is eligible in our opinion to remain as classed with fresh records M.B.S. 1.59 now and C.S. (with date) when the survey has been completed subject to the new section of coils fitted in the main propulsion motor stator, and the repaired section of the slot laminations being specially examined and dealt with as found necessary at the next drydocking, by the end of January, 1960 (12 months limit) and the temperature detector being fitted in the bottom section of the stator winding also at the next drydocking by January, 1960. (12 months limit).

Date of Committee LIVERPOOL 3-MAN 1959

Decision As now subject to M.B.S. 1.59

40m, 4, 57. T. (MADE AND PRINTED IN ENGLAND.)

Noted
for
HeaderJ. Bowman
Engineer Surveyor to Lloyd's Register of Shipping

002956-002969-0239/3

If certificate is required state where to be sent.

32 Essential Independent Pumps (Identify by position) Both turbo feed, auxiliary and starboard main extraction, and aft Butterworth pumps - Good.

33 Buge, Ballast & Oil Fuel Suction Lines, Fittings & Controls

34 Have the remaining Piping Arrangements & Fittings in the machinery space been examined as considered necessary?

35 Fresh Water Coolers Outboard

36 Lub. Oil Coolers Main - Good

37 Heaters (state service)

38 Independent Air Compressors, Coolers & Safety Devices

39 Air Receivers & Safety devices - Main

40 Auxiliary

41 Oil Fuel Tanks (Not forming part of hull structure)

42 Distillers - (2) - Good

43 Have Evaporator Safety Valves been tested under steam?

44 Steering Machinery

45 Windlass

46 Fire Extinguishing Arrangements

AUXILIARY ENGINES (Identify by position) Inboard turbo-generator turbine, gears and lub. oil cooler - Good.

Port F.D. fan (E.D) - Good.

ELECTRICAL EQUIPMENT	
PROPULSION	AUXILIARY EQUIPMENT
a Generators Good.	1 Generators & Governors Inboard alternator,
b Exciters Inboard - Good.	pilot exciter and amplitudyne unit - Good.
c Air Coolers	m Motors Inboard main condensate pump,
d Motors	Port Forced Draught Fan - Good.
e Air Coolers	n Switchboards & Fittings
f Control Gear, Cables, etc.	o Circuit Breakers
g Insulation Resistance In connection with above items.	p Cables
h Insulating Oil Test	q Insulation Resistance
i Overspeed Governors	r Steering Gear Generators and Motors
j Magnetic Couplings	s Navigation Light Indicators
k Air Gap Good.	

BOILERS OPENED UP & EXAMINED (Identify by position and state latest date of internal examination of each boiler)

MAIN	AUXILIARY, DONKEY & PRESS
2 (WT) Both 2.1.59 Good.	
Superheaters Good.	
Safety Valves Good.	
Mountings, Doors & Fastenings Good.	
Safety Valves Adjusted to Sat. 480 lbs p.s.i. (at Chief Engineers request).	
Spt. 464 lbs p.s.i.	
Boiler Securing Arrangements Good.	
EXAMINATION & TESTING OF STEAM PIPES (State material)	
Main Auxiliary (over 3 in. bore)	
Were Copper Pipes annealed?	Have Saturated Pipes in cylindrical boiler smoke boxes been tested?

EXAMINATION & TESTING OF STEAM PIPES (State material)

Main Auxiliary (over 3 in. bore)

Were Copper Pipes annealed? Have Saturated Pipes in cylindrical boiler smoke boxes been tested?

PARTICULARS OF DEFECTS & REPAIRS, ETC. (Damage repairs should be detailed separate from wear and tear repairs; state what action has been taken regarding items which are subjects of class)

Wear & Tear Repairs.

Forward turbo feed pump removed & replaced by owners reconditioned spare unit.

Aft turbo feed pump, turbine nozzle plate, fixed blades and centre bearing renewed.

Inboard turbo-generator turbine rotor and diaphragms renewed (from owners stock).

Auxiliary & starboard main extraction pumps - shafts re-sleeved. Two lengths of aux steam pipes, 2" bore S D steel, renewed & tested.

LEAVE THIS SPACE BLANK

Survey fees	m.B.s	28-0-0
Main Elect. Survey	CS	22-0-0
Aux. Elect. Survey		10-0-0
Damage fee		20-0-0
Elect. Repair		20-0-0
Late Attendance		50-0-0
Expenses		25-4-0
		6-11-0

Date when A/c rendered

Rpt. 9a Cont. Sheet 2.

Port of Liverpool.

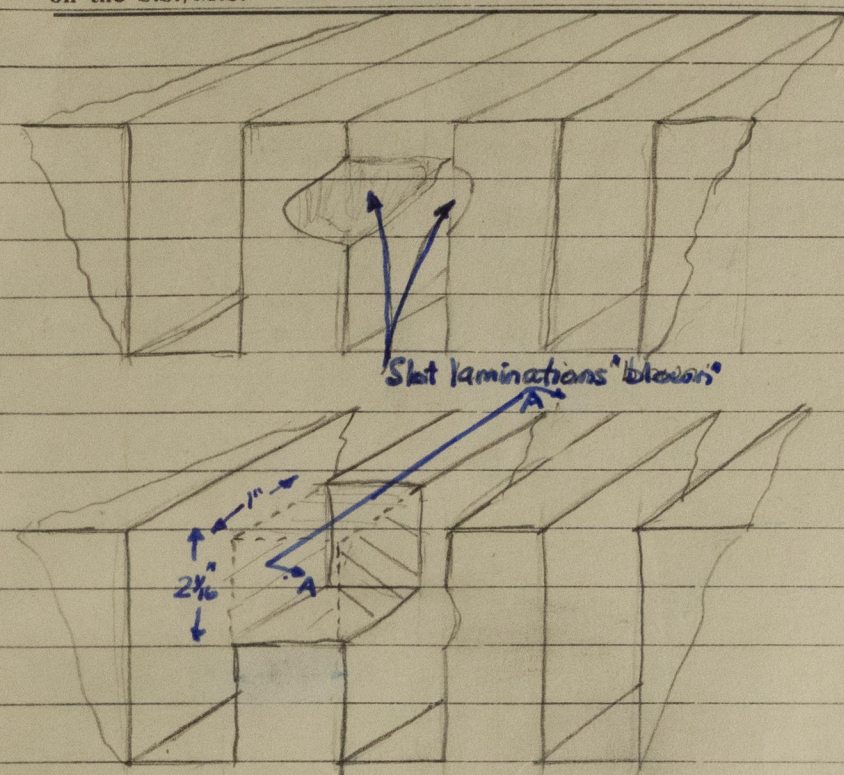
Continuation of Ship/Mchy. Report No. 9.

Continuation of Report No.

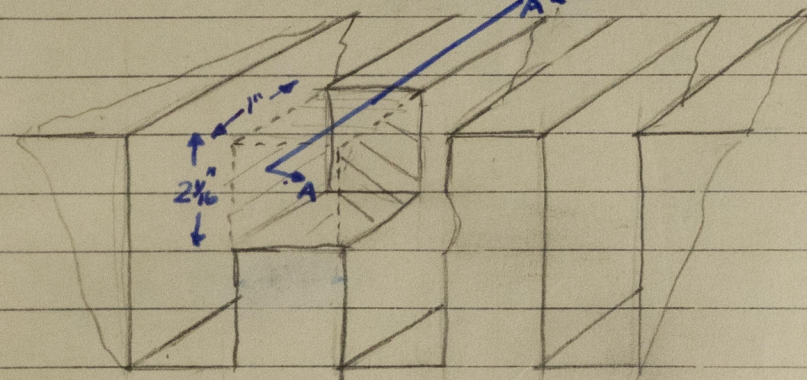
dated 17. 2. 59.

on the

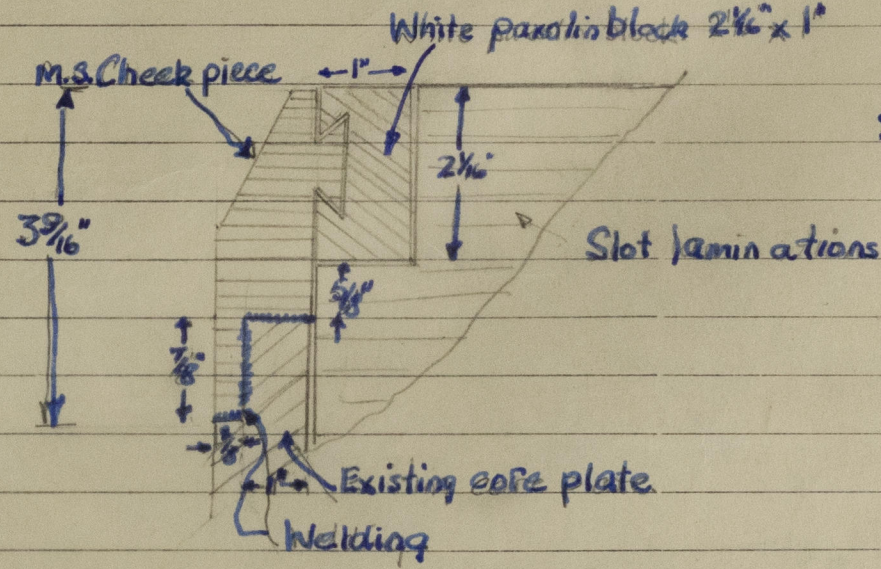
on the S.S./M.S. "TROCHISCUS"



Sketch showing Damage Sustained Fig 1



Sketch showing Section of Slot Laminations Cut out Fig 2



Section through A.A. (Fig 2) Fig 3

Electrical Repairs - On account of damage sustained at Baohaquero (Lake Maricaibo) 7th Nov. 1958.

Forward Bottom Slots of Main Propulsion Motor Stator.

Thirty stator coils were removed and the damaged slot laminations examined. Two (Ford Bottom) slots had been affected and it was recommended that a section of the slot laminations $1" \times 2\frac{1}{16}"$ should be cut away and the space blocked with a piece of White Sindanyo. The "blocking piece" to be doweled to a steel check piece which was to be secured to the existing core plate by welding. The adjacent core plate teeth had suffered only slight damage and were to be built up with welding and the finish ground. Two slight voids in the slot laminations were to be filled with commutator cement (see sketches).

The above recommendations were carried out and prior to the completion of the rewinding of the section of coils the rotor was turned and damaged the evolutes of existing coils this caused the removal and replacement of a further sixteen stator coils.

The lower embedded temperature detectors had been damaged and replacements (from the U.S.A.) were not immediately available. The detectors have been placed on order and it is stated that they will be fitted at the next drydocking, about the end of 1959.

Before connecting the forty-six new coils to the rest of the stator windings they were pressure tested at 5.6 KV. and on completion of the repair the stator winding was pressure tested at 2.5 KV. all with satisfactory results.

151190

Rpt. 9a Contⁿ. Sheet 3.

Continuation of Ship Mch. Report No. 9.

Port of Liverpool.

~~Continuation of Report No.~~

dated

17. 2. 59.

on the

on the S.S./M.S. "TROCHISCUS"

Electrical Repairs. (Continued).

Main Propulsion Motor Rotor.

The Insulation resistance of the rotor was found to be low (0.1mm.) and heat was applied to the winding in order to dry it out. The final Insulation Resistance after external heating and sea trials was 0.55mm.

On completion of the repair the main motor was tested under full power conditions at sea. (Trial records are attached). After this test the motor was opened up and examined and found to be satisfactory.

B.



© 2020

Lloyd's Register
Foundation

0239 3/3