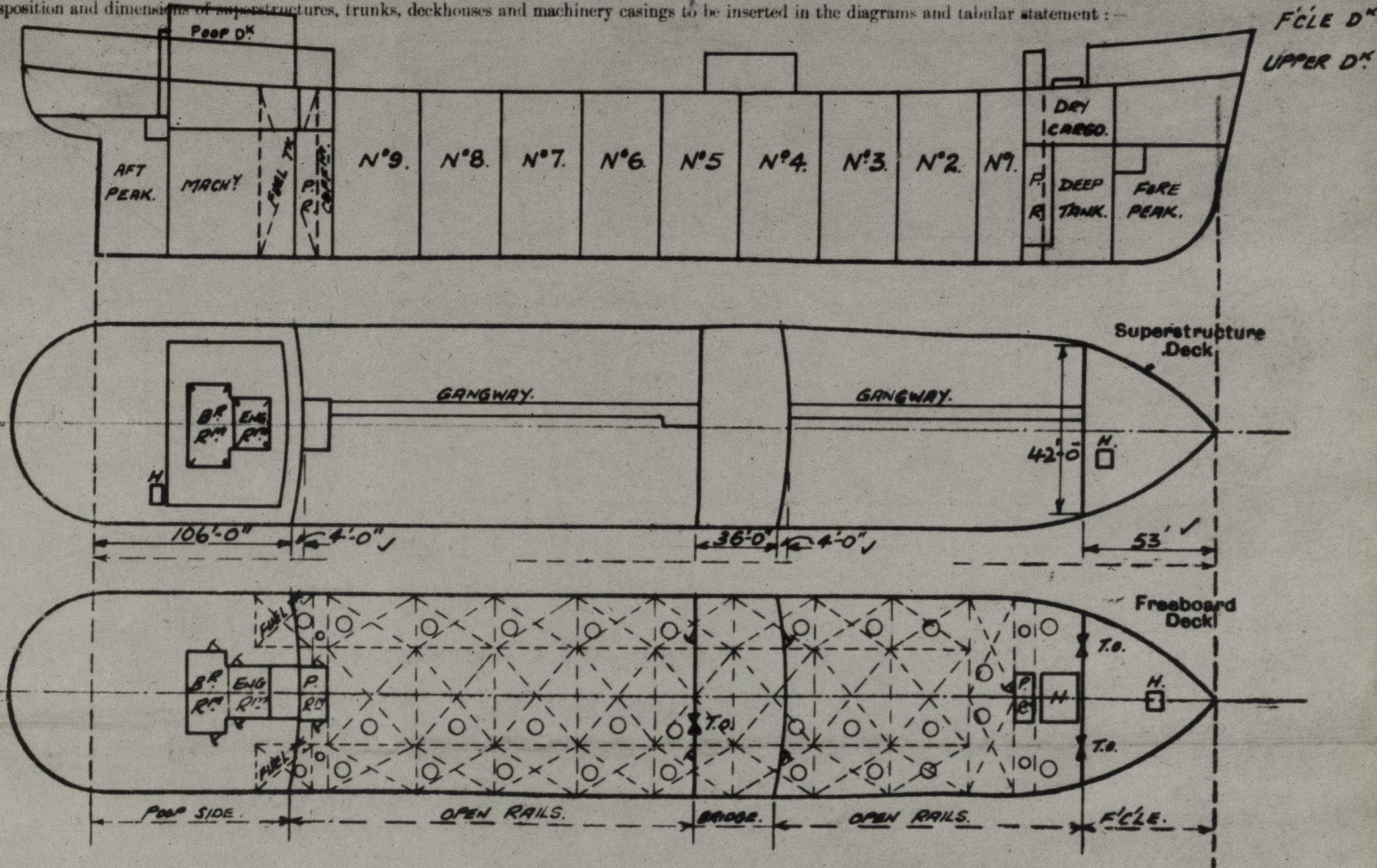


SURVEYS FOR FREEBOARD.
(CONDITIONS OF ASSIGNMENT.)

Ship's Name **TROCHISCUS** ex **FORT MATANZAS** Port of Survey **CARDIFF.**
Official Number **181835.** Surveyor's Signature **Dennis Sullivan**
Nationality and Port of Registry **BRITISH: LONDON.** Date of Survey **29-1-48.**

Disposition and dimensions of superstructures, trunks, deckhouses and machinery casings to be inserted in the diagrams and tabular statement:—



Particulars of Superstructures, Trunks, Casings, Deckhouses.

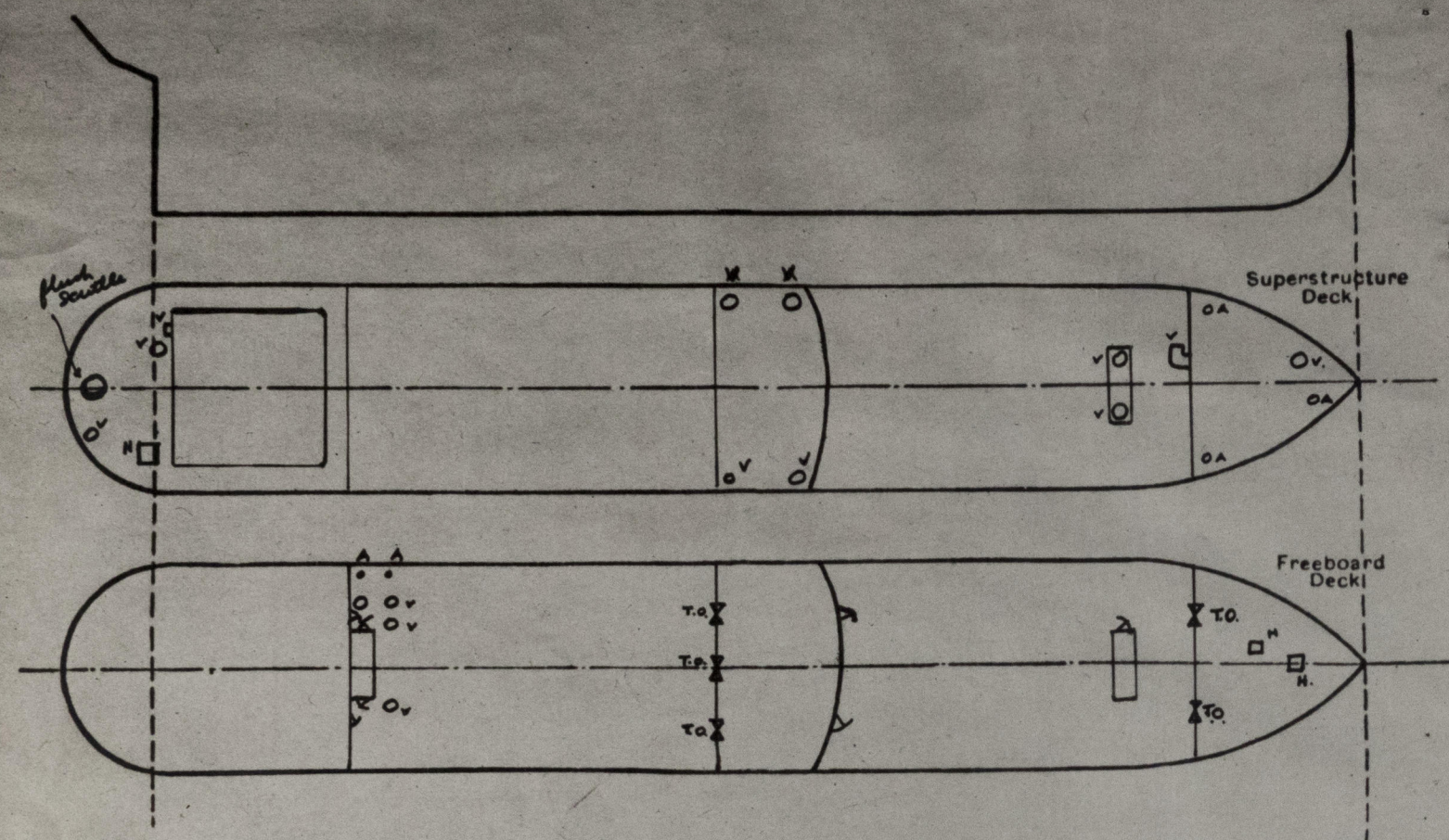
	Coaming	Plating	Stiffeners	Spacing	End Attachments of Stiffeners	Size of Openings	Height of Sills	Height of Casings
Poop Bulkhead	.44	.44	9x4 flange plates	30"	welded top & bottom	20'5"0" x 2'4"	18"	8'0"
Bridge, After Bulkhead	.30	.30	4x3 angles rivet	30"	welded top & bottom	22'4"9" x 3'1" - 24"	18"	8'0"
Bridge, Forward Bulkhead	.44	.44	9x4 flange plates	30"	ditto	22'5"0" x 2'4"	18"	8'0"
Forecastle Bulkhead	.38	.38	4x3 angles rivet	30"	AKI top & welded 8"	22'4"9" x 3'1"	24"	10'0"
Trunk, Aft	None							
Trunk, Forward Pump Rm. Aft	.38	.38	9x4 fl. plate	28"	welded T & B.	2'5"0" x 2'4"	18"	8'0"
Exposed Machinery Casings on Freeboard or	PR. .38	.38	5x3 REV L rivet	27"	welded top only	8'5"0" x 2'4"	18"	8'0"
Exposed Machinery Casings on Superstructure Decks								
Machinery Casings within Superstructures not fitted with Class I Closing Appliances	None							
Deckhouses on Flush Deck Ships	None							

Particulars of Closing Appliances (state if capable of being manipulated from both sides).

Poop Bulkhead	Hinged steel T.T. Door (P.&S.) capable of being manipulated from both sides
Bridge, After Bulkhead	Hinged steel T.T. doors capable of being manipulated from both sides. Portable steel plates secured by hook bolts.
Bridge, Forward Bulkhead	Hinged steel T.T. doors capable of being manipulated from both sides.
Forecastle Bulkhead	Hinged steel T.T. doors capable of being manipulated from both sides. Portable steel plates secured by hook bolts.
Exposed Machinery Casings on Freeboard or	Pump Rooms - Hinged steel T.T. doors capable of being manipulated from both sides.
Exposed Machinery Casings on Superstructure Decks	No openings.
Machinery Casings within Superstructures not fitted with Class I Closing Appliances	No openings
Deckhouses on Flush Deck Ships	---

PARTICULARS OF PROTECTION TO OPENINGS, ETC.

The following diagrams should be used to indicate the positions of cargo and coaling hatchways, gangway, cargo and coaling ports, ventilators, companionways, etc., which would affect the seaworthiness of the ship:-



Particulars of fiddley, funnel and ventilator coamings, engine room skylight and other openings in machinery casing tops and their means of closing:-

Fiddley openings fitted with gratings and hinged steel flaps. ✓

E.R. & BR. ventilator and funnel coamings strongly constructed of steel. ✓

E.R. & Pump Room skylights strongly constructed of steel. ✓

Particulars of Flush Bulkhead Scuttles:-

on Poop Deck to Bosun's Store. Steel cover. Lanyard joint. Cover secured by chain to underside of deck.

Particulars of Companionways:- Pump Rooms - Hinged steel W.T. doors, manipulated from both sides, openings 5'-0" x 2'-4" sill 18".
Poop Deckhouse - plating steel, openings in sides and ends 5'-0" x 2'-4", sills 18".
with hinged steel W.T. doors manipulated from both sides.

Particulars of Ventilators in exposed positions on freeboard and superstructure decks:-

Forecastle Deck:- 2 - 12" diam. 36" high.

Upper Deck:- 3 - 24" diam in aft well. 20'-0" high.
2 - 12" diam on top of Ford Pump Room 36" high.

Bridge Deck:- 4 - 12" diam. 36" high.

Poop Deck:- One at 12" x 15" by mechanical ventilation } 24" high, in height suitably supported. ✓
One at 18" diam.
One at 12" diam. combined air & vent. pipes. 36" high.

Particulars of Air Pipes in exposed positions on freeboard, raised quarter, or superstructure decks:-

Forecastle Deck:- One at 4" diam. 20" high.
2 - 2" "

Upper Deck:- 2 - 4" diam. fore well. 36" high.
2 - 6" diam. hold fore 36" high.

Poop Deck:- One 12" diam. Vent/air pipes. 36" high.

Efficient closing appliances provided for all air escape pipes. ✓

Particulars of Gangway Cargo and Coaling Ports:- None.

TROCHISCUS.

Particulars of Scuppers and Sanitary Discharge Pipes:-

Scuppers and sanitary discharges from Poop accommodation led overboard below the freeboard deck and fitted with substantially constructed storm valves at ship's side. ✓

Scuppers and sanitary discharges from Midship accommodation led overboard above the freeboard deck and fitted with substantially constructed storm valves at ship's sides. ✓

Particulars of Side Scuttles:-

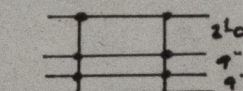
Poop Tween Decks:- side scuttles of strong construction fitted with hinged deadlights permanently attached. ✓

Vertical distance of Sill of lowest Side Scuttle above top of keel

Particulars of Guard Rails:-

At sides of Upper, Forecastle & Poop Decks

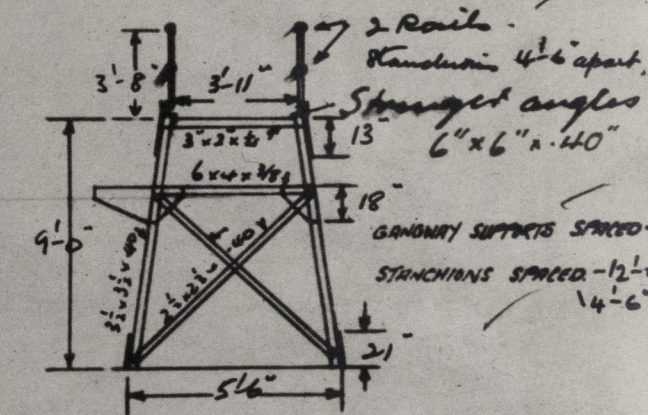
Stanchions 3'-6" in height spaced 5'-0" apart and fitted with 3 rails



Particulars of Gangways, Lifelines, etc.:-

Fore and aft gangway fitted between the forecabin and bridge deck and bridge and poop deck. ✓ welded

Construction with dequar steel walkway.



Particulars of Freeing Arrangements.

	Length of Bulwark	Height of Bulwark	Size of Freeing Ports	Number each side	Area each side	Rule area each side
After Well ...			guard rails ✓			
Forward Well ...						

State position of each freeing port ... After Well:-

(F. and A. position and height above deck edge) Forward Well:-

State whether the freeing ports are fitted with shutters, bars, or rails, and give particulars of such:-

Additional area where sheer is less than standard.

PARTICULARS OF PROTECTION TO OPENINGS, ETC.

HATCHWAYS ON FREEBOARD AND SUPERSTRUCTURE DECK										STR. OTHER SMALL HATCHES	
FREEBOARD DECK											
Description of Hatchway	TO STORE	TO CARGO HOLD	OIL TANKS	FORE & AFT	TO C/O	TO DEPT	TO C.F.	TO TANK BUNKERS	TO STEWARD	7 scale space	8 scale space
Dimensions of Hatchway	3'-1" x 3'-1"	11'-3" x 4'-9"	48" DIA.	24" Dia	24" Dia	24" Dia	24" Dia	4'-0" x 4'-0"	4'-0" x 4'-0"	3'-0" x 3'-0"	3'-0" x 3'-0"
COAMINGS	Height above Deck ... 30"	30"	30"	30"	30"	30"	30"	30"	30"	30"	30"
	Thickness60"	.60"	.60"	.60"	.60"	.60"	.60"	.60"	.60"	.60"	.60"
	Stiffeners ... 3" long ft	3" long ft	nil	nil	nil	nil	nil	3" long ft	3" long ft	3" long ft	3" long ft
	Brackets, Stays ... 3" long ft	3" long ft	nil	nil	nil	nil	nil	3" long ft	3" long ft	3" long ft	3" long ft
HATCH BEAMS	Number ...	Steel cover	nil	nil	nil	nil	nil	nil	nil	none	none
	Spacing ...	re-inforced	nil	nil	nil	nil	nil	nil	nil	none	none
	Scantling and Sketch ...	with 6 x 3 1/2" rivets 2'-9" apart	nil	nil	nil	nil	nil	nil	nil	none	none
	Bearing Surface ...	with 6 x 3 1/2" rivets 2'-9" apart	nil	nil	nil	nil	nil	nil	nil	none	none
FORE AND AFTERS	Number ...	none	none	none	none	none	none	none	none	none	none
	Spacing ...	none	none	none	none	none	none	none	none	none	none
	Unsupported Lengths ...	none	none	none	none	none	none	none	none	none	none
	Scantling and Sketch ...	none	none	none	none	none	none	none	none	none	none
	Bearing Surface ...	none	none	none	none	none	none	none	none	none	none
HATCH COVERS	Material ...	STEEL	STEEL	STEEL	STEEL	STEEL	STEEL	STEEL	STEEL	STEEL	STEEL
	Thickness38"	.60"	.60"	.60"	.60"	.60"	.60"	.60"	.60"	.60"
	How fitted ...	hinged	hinged	hinged	hinged	hinged	hinged	hinged	hinged	hinged	hinged
	Bearing Surface ...	hinged	hinged	hinged	hinged	hinged	hinged	hinged	hinged	hinged	hinged
Spacing of Cleats	...	-	-	-	-	-	-	-	-	-	-
Number of Tarpaulins	...	-	-	-	-	-	-	-	-	-	-

*Are wood fore and afters steel shod at all bearing surfaces? -

Are battens and wedges efficient and in good condition? -

Are tarpaulins in good condition and in accordance with rule requirements? -

Are lashings provided in accordance with rule requirements? -

Steel cover on cargo hatchways are secured by butterfly nuts & toggles spaced 1'-7" apart.

Particulars of any special features:-

All cargo oil tank hatch covers fitted with ullage doors 10" diameter of strong construction secured by strongbacks. ✓

Endorsement at first survey and at surveys for renewal of Certificate:-

The fittings and appliances are in accordance with the particulars shown on this form (or as now modified) and are in good condition.



© 2020

Lloyd's Register Foundation