

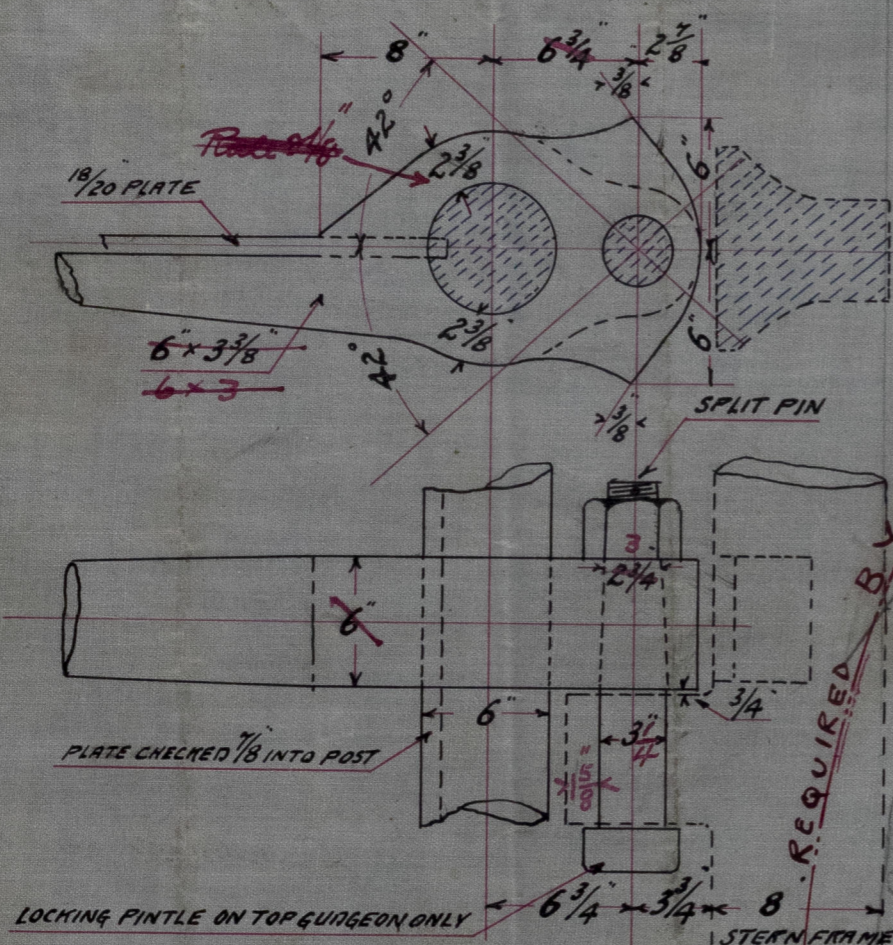
16.3.08

20/12/07 at 3

Speed under 10 knots

DETAIL OF STOPPER

SCALE $1\frac{1}{2}$ - 1 FT.



S. S. № 194.

RUDDER PLAN.

SCALE $\frac{3}{4} = 1 \text{ FT.}$

RIVETS IN ARMS $1\frac{1}{8}$ " DIA. SPACED $4\frac{1}{2}$ " DIA. APART C & TO C.

1/4" RING BOLT

TURNED DOWN 3'-2"

6 1/2"

1'-5" KEY SEAT 1/16" x 5/16"

PORT SIDE ONLY

5/8" x 5/16" KEY SEAT

8"

9" DECK

7 1/2"

8 1/2"

2"

6 x 3 3/8"

Rule 8 x 5"

2'-9"

2'-1 1/2"

4" x 1"

LOCKING PINTLE ON TOP GUDDGEON ONLY

7 1/2"

3'-3 1/4"

1'-6"

3'-11"

3'-10"

1'-6"

4'-3 3/4"

6 3/4"

1'-6"

1'-6"

1'-6"

4'-6"

4'-5"

5'

4' x 1"

4'-6"

7 x 3 3/8"

1'-6"

1'-6"

4'-4 1/4"

4'-0 1/4"

3'-6 1/2"

1'-6"

1'-6"

2'-7"

5'

4' x 1"

2'-6"

6 x 3 3/8"

Rule 7 x 3 3/8"

7 x 3 3/8"

18/20 PLATE

Rule 7/8"

PLATE CHECKED INTO POST 7/8"

PINTLES 3" DIAMETER TAPERED TO 2 3/4" FROM BOTTOM OF ARM

THIS ARM TO FORM STOPPER

TOTAL LENGTH 24'-8 3/4"

OWNERS.

Penetration as made 7/16"

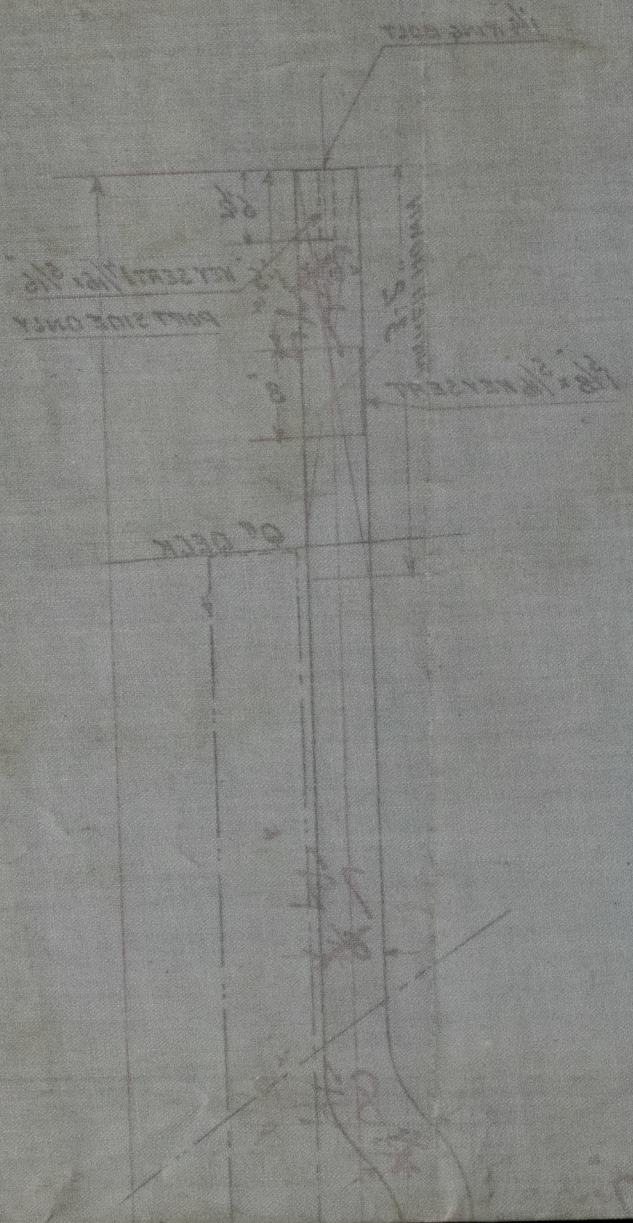
TIME

7.1.08

10.2.08

C.B.

NOTE. CORRECT SPACING OF GUIDELINES TO BE TAKEN
FROM STERN POST TEMPLATE



Rudder Plan
 Dundee MS copy
 SS. No. 197

DUN. REPT. No. 7361
S. S. TROPEIRO



80.1.7
 80.5.01
 80.8.21



© 2020

Lloyd's Register
 Foundation

002956-002969-0185