

Lloyd's Register of Shipping.

Index No. 36779  
(For London Office only).

SURVEYS FOR FREEBOARD.

Nº 33.346

(CONDITIONS OF ASSIGNMENT.)

Ship's Name SS. EMPIRE BARRIE.

Port of Survey Sunderland.

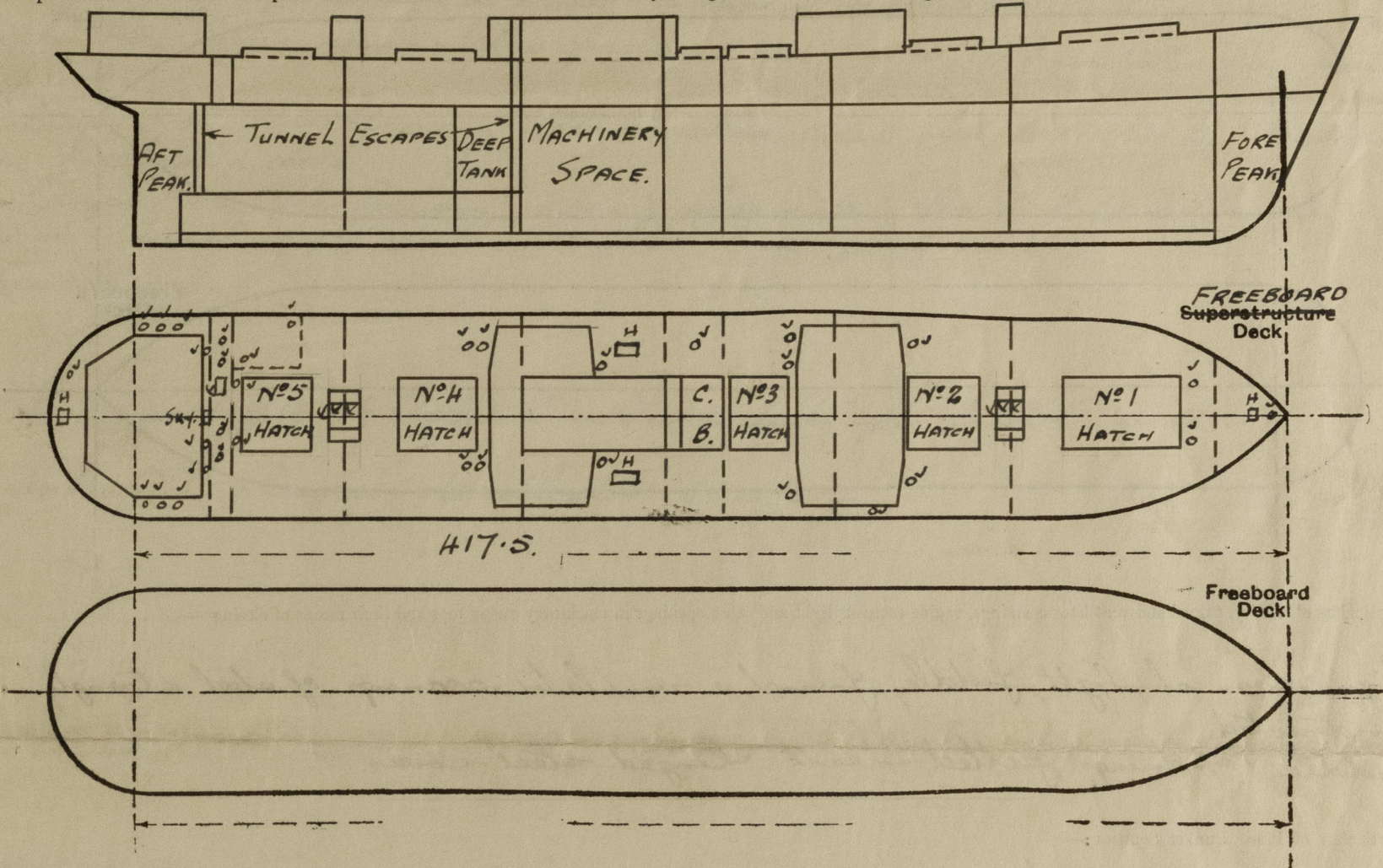
Official Number 169016

Surveyor's Signature W. E. Miller

Nationality and Port of Registry British, Sunderland

Date of Survey During Construction

Disposition and dimensions of superstructures, trunks, deckhouses and machinery casings to be inserted in the diagrams and tabular statement : --



Particulars of Superstructures, Trunks, Casings, Deckhouses.

	Coaming	Plating	Stiffeners	Spacing	End Attachments of Stiffeners	Size of Openings	Height of Sills	Height of Casings
Pop Bulkheads In Tween Decks.								
Raised Quarter Deck Bulkhead ...		✓						
Bridge, After Bulkhead ...		✓						
Bridge, Forward Bulkhead ...		✓						
Forecastle Bulkhead ...		✓						
Trunk, Aft ...		✓						
Trunk, Forward ...		✓						
Exposed Machinery Casings on Freeboard or Raised Quarter Deck ...	34	30	3x3x 5/16	30"	Continuous	5'-0" x 2'-0"	24"	✓
Exposed Machinery Casings on Superstructure Decks ...		✓						
Machinery Casings within Superstructures not fitted with Class I Closing Appliances ...	34 1/2	30 1/2	5x3x 5/16 O.A. to 3x3x 5/16	30"-36"	Bld	5'-0" x 2'-0"	18"	7'-6" ✓
Deckhouses on Flush Deck Ships ...	Aft. 30	30	3x3x 5/16	24"-42"	do	5'-0" x 2'-0"	24"	7'-6"

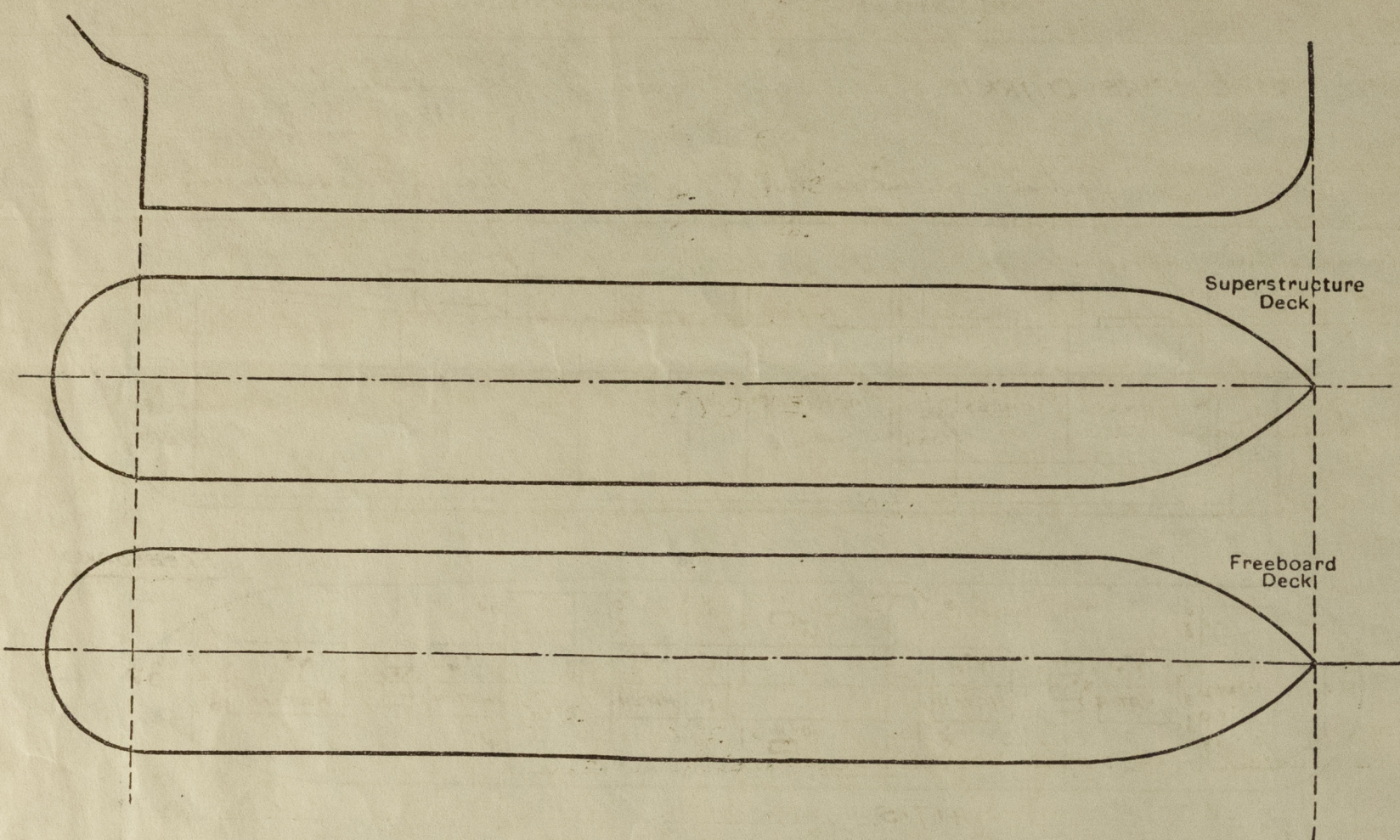
Particulars of Closing Appliances (state if capable of being manipulated from both sides).

Pop Bulkheads In Tween Decks.	Steel Plate doors with through bolts. Loos on forward bulkhead riveted ✓
Raised Quarter Deck Bulkhead ...	✓
Bridge, After Bulkhead ...	✓
Bridge, Forward Bulkhead ...	✓
Forecastle Bulkhead ...	✓
Exposed Machinery Casings on Freeboard or Raised Quarter Deck ...	Hinged steel doors operated from both sides ✓
Exposed Machinery Casings on Superstructure Decks ...	✓
Machinery Casings within Superstructures not fitted with Class I Closing Appliances ...	✓
Deckhouses on Flush Deck Ships ...	2" leak doors operated from both sides ✓



# PARTICULARS OF PROTECTION TO OPENINGS, ETC.

The following diagrams should be used to indicate the positions of cargo and coaling hatchways, gangway, cargo and coaling ports, ventilators, companionways, etc., which would affect the seaworthiness of the ship:—



Particulars of hiddle, funnel and ventilator coamings, engine room skylight and other openings in machinery casing tops and their means of closing:—

Engine room skylight, hiddle, funnel & ventilator coamings of steel strongly constructed.  
Hiddle openings fitted with hinged steel covers. ✓

Particulars of Flush Bunker Scuttles:—

NONE.

Particulars of Companionways:— on Freeboard Deck.

To After Accom<sup>ty</sup> Deck opening 2'-6" x 4'-9", plating 25", 2" steel door, 21" coaming. ✓  
To Tween Deck Bunkers in Deckhouse. Deck opening 30" x 30", plating 30", 30" steel door, ✓  
Skylight to After Accom<sup>ty</sup> 3'-0" x 3'-0", plating 30", 22" to lip. ✓ 18" coaming.

Particulars of Ventilators in exposed positions on freeboard and superstructure decks:—

1-10"	Vent to Fore Peak Store	Coaming 36" x 32."
6-24"	" " Holds & Tween Decks	" 36" x 42."
2-18"	" " " "	" 10'-6" x 40" stayed. ✓
1-18"	" " " "	" 36" x 40" "
2-12"	" " Deep Tank	" 10'-6" x 34" stayed. ✓
2-8"	" " Tween Deck Bunkers	" 36" x 30"
2-12"	" " Deck	" 36" x 34"
2-18"	" " After Hold	" 36" x 40"
2-9"	" " Accom <sup>ty</sup>	" 36" x 32"
5-10"	" " " " Steaming Gear	" 36" x 32"
9-6"	" " " " Stores	" 36" x 30" ✓
1-12"	" " Funnel Aft	" 36" x 34"

ventilators fitted with wood plugs & capoe covers.

Particulars of Air Pipes in exposed positions on freeboard, raised quarter, or superstructure decks:—

All air pipes 30" in height to lip, fitted with wood plugs.

"EMPIRE BARRIE"

Particulars of Gangway Cargo and Coaling Ports:—

NONE.

Particulars of Scuppers and Sanitary Discharge Pipes:—

Scupper from cargo tween decks, led to bilges, self closing cocks in E.R. bilge. ✓  
5' x 2 1/2" slot cut in stringer bar on freeboard deck, to drain deck. ✓  
Discharge from spaces on or above freeboard deck, led to N.R. valves in tween decks. ✓  
Scupper from Refrig. space below freeboard deck, led to N.R.V. controlled from freeboard deck. ✓  
Discharge from After Accom<sup>ty</sup> below freeboard deck, led to N.R. valves controlled from freeboard deck. ✓  
Discharge from After Accom<sup>ty</sup> below freeboard deck, led to Cold bilges open ended, and to tunnel well with weighted lower plug cock. ✓

Particulars of Side Scuttles:—

10" dia. sidelights to Accom<sup>ty</sup> in Tween decks aft, fitted with substantial hinged deadlights. ✓

Vertical distance of Sill of lowest Side Scuttle above top of keel

35'-6" ✓

Particulars of Guard Rails:—

In way of Accom<sup>ty</sup>, bulwark 126'-9", 3'-6" high, plating 26", rail 6" x 3 1/2" x 7/16 L on remainder of freeboard deck rail 3'-6" high, 3 rails, stanchions 5'-0" apart.

Particulars of Gangways, Lifelines, etc.:—

One lifeline supplied, with fitting P. 95.

## Particulars of Freeing Arrangements.

	Length of Bulwark	Height of Bulwark	Size of Freeing Ports	Number each side	Area each side	Rule area each side
After Well ...	✓					
Forward Well ...	✓					

State position of each freeing port ... After Well:— ✓

(F. and A. position and height above deck edge) Forward Well:— ✓

State whether the freeing ports are fitted with shutters, bars, or rails, and give particulars of such:— ✓

Additional area where sheer is less than standard. ✓



© 2020

Lloyd's Register Foundation

0074 2/2



PARTICULARS OF PROTECTION TO OPENINGS, ETC.

HATCHWAYS ON FREEBOARD <del>AND SUPERSTRUCTURE</del> DECKS.										
Description of Hatchway	...	...	N <sup>o</sup> 1.	N <sup>os</sup> 2, 4, 5	N <sup>o</sup> 3	CROSS BUNKER.	2 BUNKER HATCHES	HATCH TO STORE FOR <sup>2</sup>	HATCH TO MAGAZINE	BUNKER HATCH ON CASING TOP.
Dimensions of Hatchway	...	...	33'9" x 20'	35' x 20'	15' x 20'	8' x 20'	7'2 1/2" x 4'	3'6" x 2'6"	1'9" x 2'0"	4'5" x 18'6"
COAMINGS	{	Height above Deck	30"	do.	do.	do.	30"	24"	24"	
		Thickness { Sides	4 1/4"	9' x 3 1/2" x 7/16"	7' x 3' x 3/8"	7' x 3' x 3/8"	40"	40"	40"	9' x 3 1/2" x 7/16"
		Ends	8' x 3 1/2" x 7/16"	8' x 3 1/2" x 7/16"	8' x 3 1/2" x 7/16"	8' x 3 1/2" x 7/16"	✓	✓	✓	✓
		Stiffeners	1	3	3	1	✓	✓	✓	✓
Brackets, Stays		3	3	1	1	✓	✓	✓	✓	
HATCH BEAMS	{	Number	5	5	2	1				
		Spacing	equal	do.	do.	do.				
		Scantling and Sketch	5' x 3' x 3/8"	18 1/2" x 35"	18 1/2" x 34"	18 1/2" x 32"	✓	✓	✓	✓
		Bearing Surface	5' x 3' x 3/8"	3"	do.	do.	✓ do.			
FORE AND AFTERS	{	Number								
		Spacing								
		Unsupported Lengths								
		Scantling* and Sketch								
Bearing Surface										
HATCH COVERS	{	Material	R.W.				R.W.			
		Thickness	3"	do.	do.	do.	3"	do.	do.	F.A. do.
		How fitted	F.A.	do.	do.	do.	do.	do.	do.	do.
		Bearing Surface	5' x 3"	do.	do.	do.	2 1/2"	do.	do.	do.
Spacing of Cleats			24"			24"				
Number of Tarpaulins			2			2				
*Are wood fore and afters steel shod at all bearing surfaces? ✓										
Are battens and wedges efficient and in good condition? YES.										
Are tarpaulins in good condition and in accordance with rule requirements? YES.										
Are lashings provided in accordance with rule requirements? YES. Locking bar fitted at Nos 1, 2, 3, 4, 5, & C.B. hatch.										

Particulars of any special features:—

This vessel has been built to scantlings as approved for a draft 18' in excess of that permitted by the Rules for a C.S.S. vessel having a tonnage opening. ✓

DMIT

Endorsement at first survey and at surveys for renewal of Certificate:—

The fittings and appliances are in accordance with the particulars shown on this form (or as now modified) and are in good condition.



© 2020

Lloyd's Register  
Foundation