

7.9.10

# RUDDER

N° 465.

SCALE 1"=1 FT

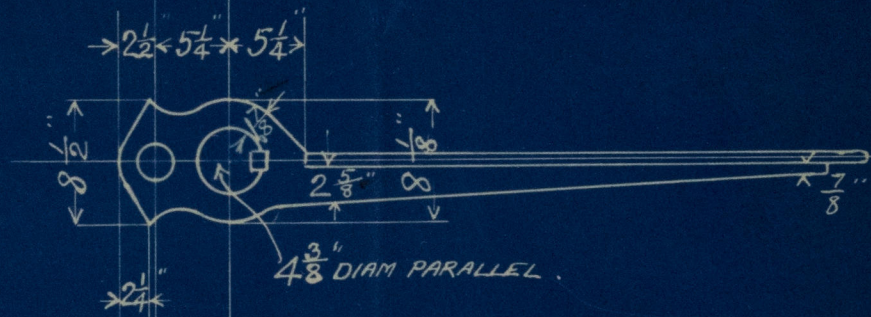
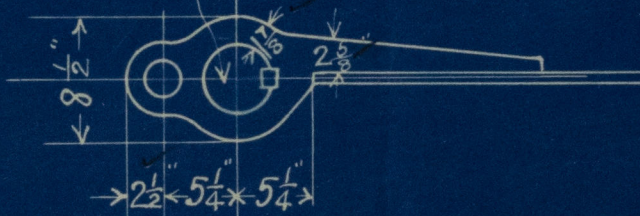
ALEXS HALL & Co., Ltd.  
SHIPBUILDERS, ENGINEERS & BOILERMAKERS.

ABERDEEN.

18 March '10 *mp*

Speed not over 10 Knots.

4 3/4" DIAM. PARALLEL



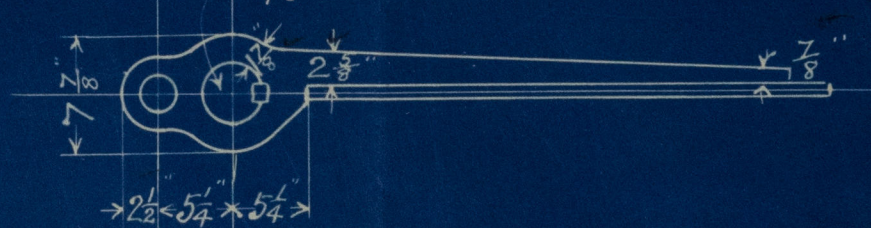
ARMS 4 1/4" x 2 5/8" TO 3" x 7/8"

PINTLES 2 1/2"

" NECKS TAPERED TO 2 3/8"

" SCREWS 2 1/4"

4 1/8" DIAM. PARALLEL



3 3/4" DIAM. PARALLEL



Lloyd's Register  
Foundation

002956-002961-0016



A Hall & Co<sup>ys</sup> Ltd

N<sup>o</sup> 465.

Rudder.

S.S. "Ann Ford Melville"

Abn rept. N<sup>o</sup> 10508.



© 2020

Lloyd's Register  
Foundation

Rudder

002956-002969-0016