

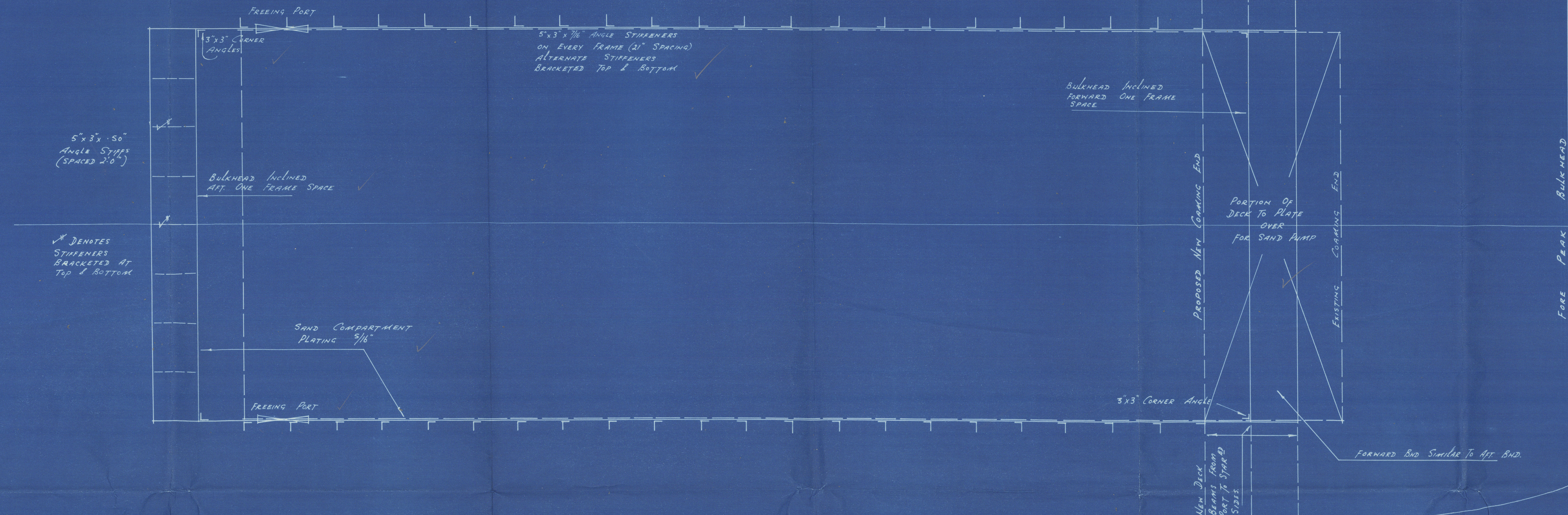
"S/S ENDCLIFFE"

"SHOWING PROPOSED ALTERATIONS FOR CONVERSION"
"INTO SAND SUCTION DREDGING VESSEL"

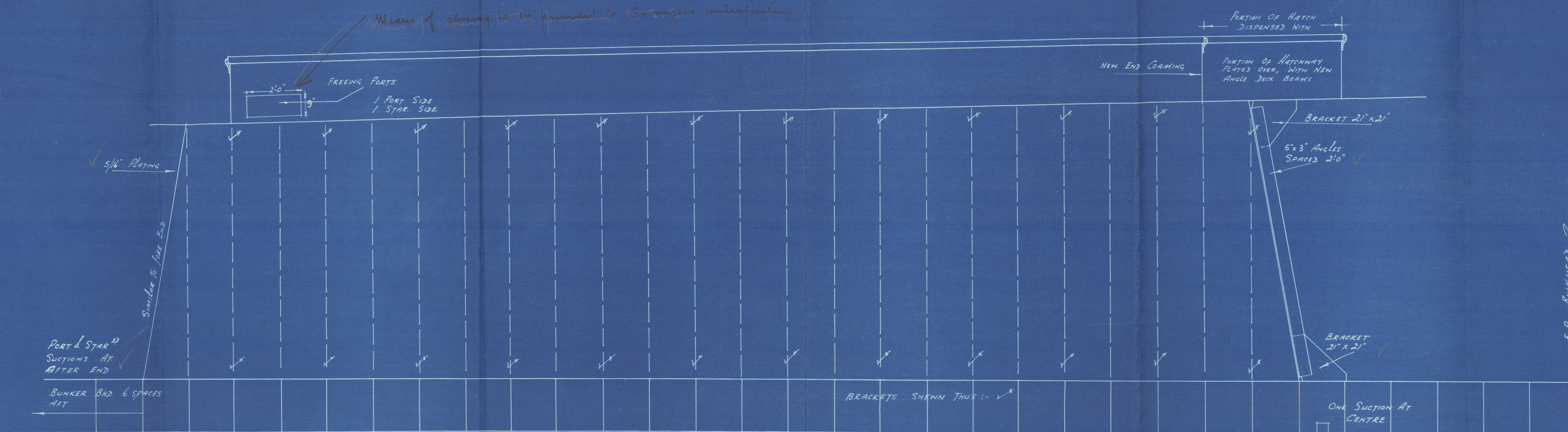
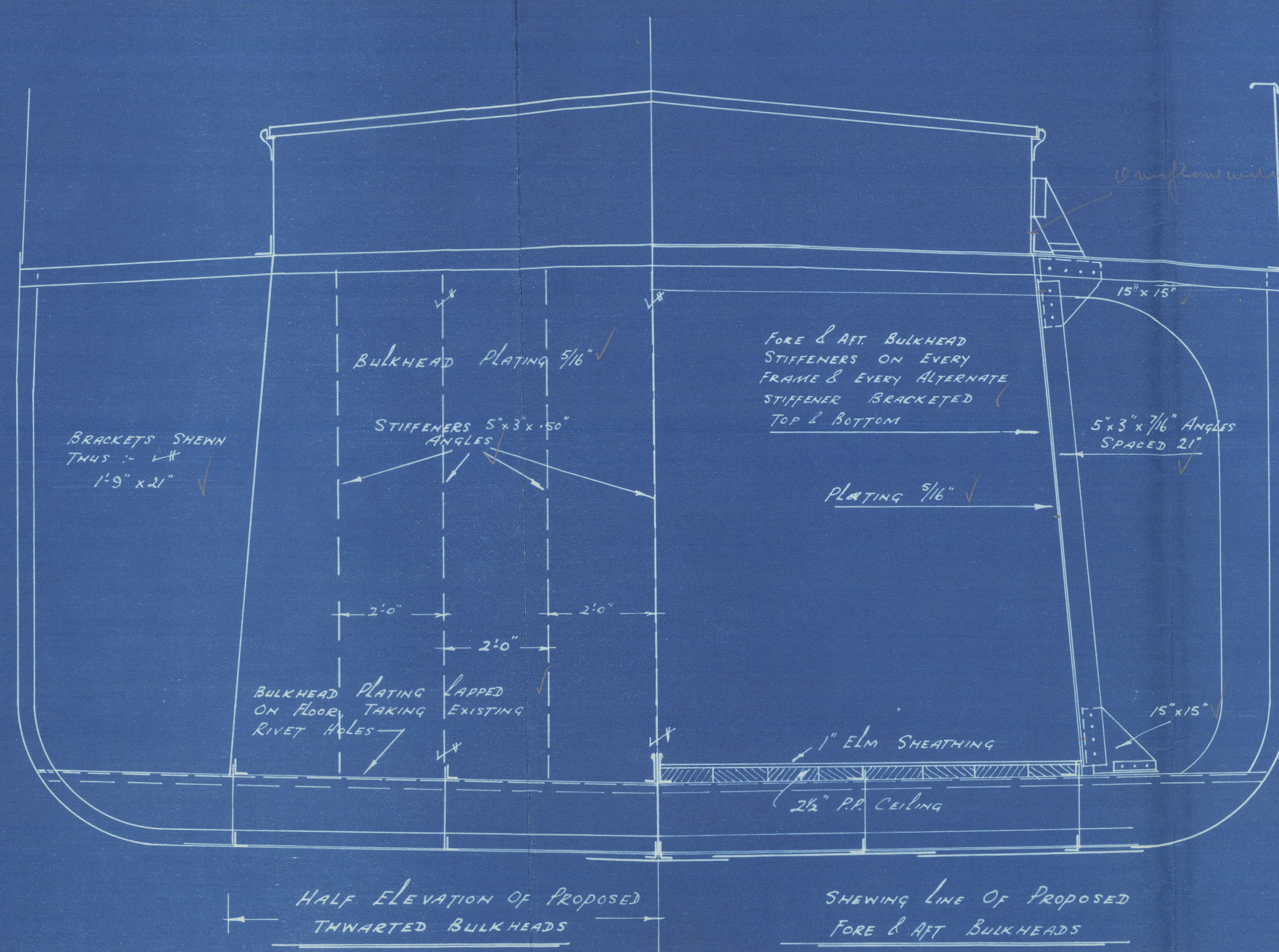
"AUGUST 1939"

"Scale: 1/2" = 1 FOOT"

1. General Notes



"PLAN OF SAND COMPARTMENT & ALTERATION TO HATCH OPENING"



"ELEVATION OF SAND COMPARTMENT"

S.S. "ENDCLIFFE".

Off. rept

Proposed alterations for No. 53180.
Pumping & Carrying Sand in Bulk.



© 2020

Lloyd's Register
Foundation

002938-002946-0311