

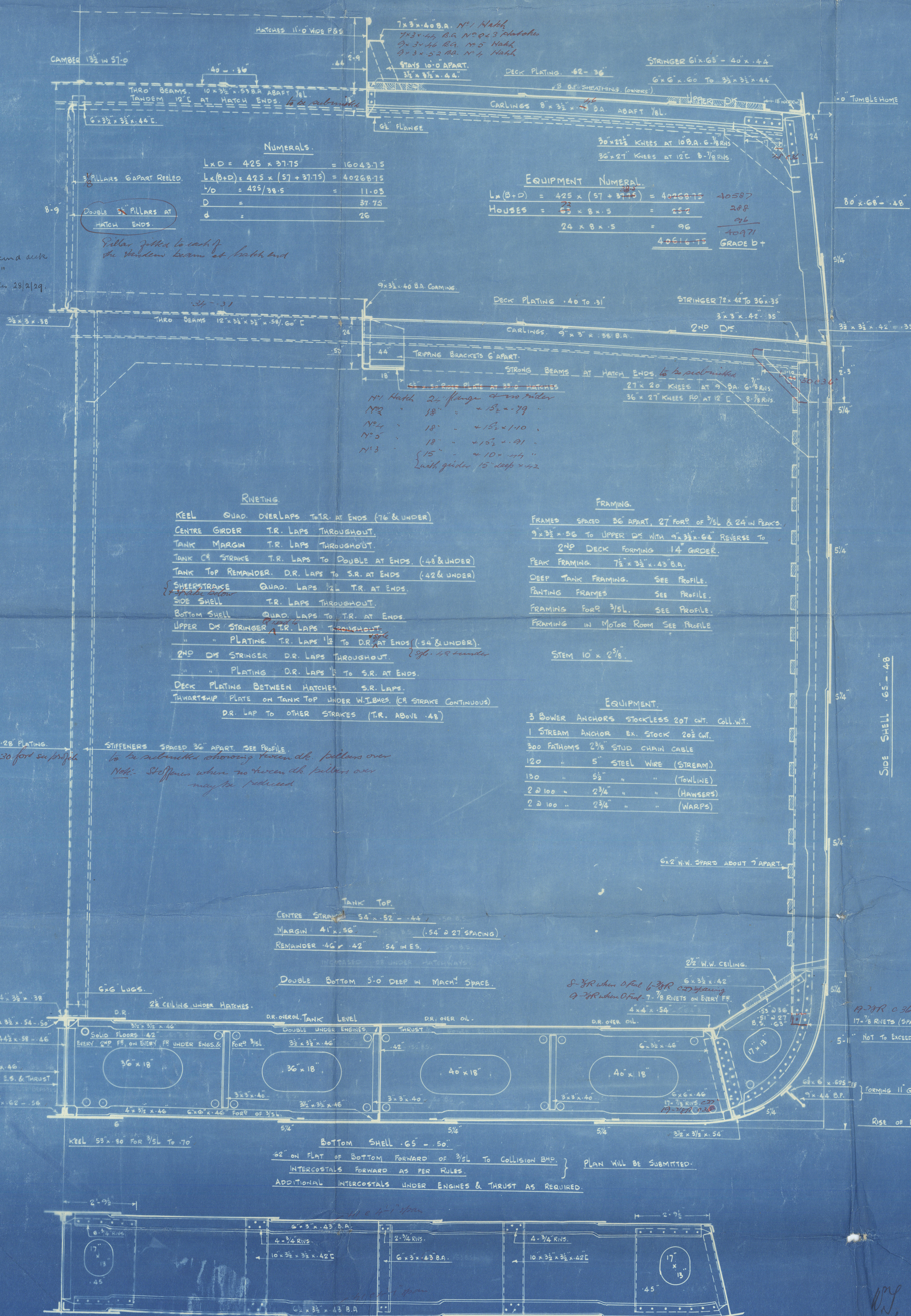
Nos 510 - 11-12 & 13

MIDSHIP SECTION.

DIMENSIONS : 425' x 57' x 38'-6" MLP TO UPPER DECK.

TO CLASS 100A.1. "WITH FREEBOARD". LOAD DRAFT 25'-10" MOULDED.

SCALE: 1/2" = 1 FOOT.



SIDE SHELL .65" - .48"

NOT TO EXCEED 5 1/2" DIA. ELSEWHERE 7 DIA.

31.12.28
21 DEC. 1928
31.12.28

W. cers 510 - 13.

Wharfedale Section

See Revised Section

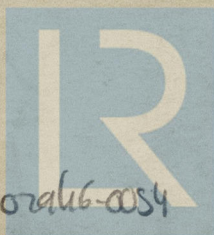
①

S.S. 510. "Wistank"

S.S. 511. "Lissibank"

S.S. 512. "Jaybank"

S.S. 513. "Tweedbank."



© 2020

Lloyd's Register
Foundation

002938-002946-0054