

1675-7 SHIP.

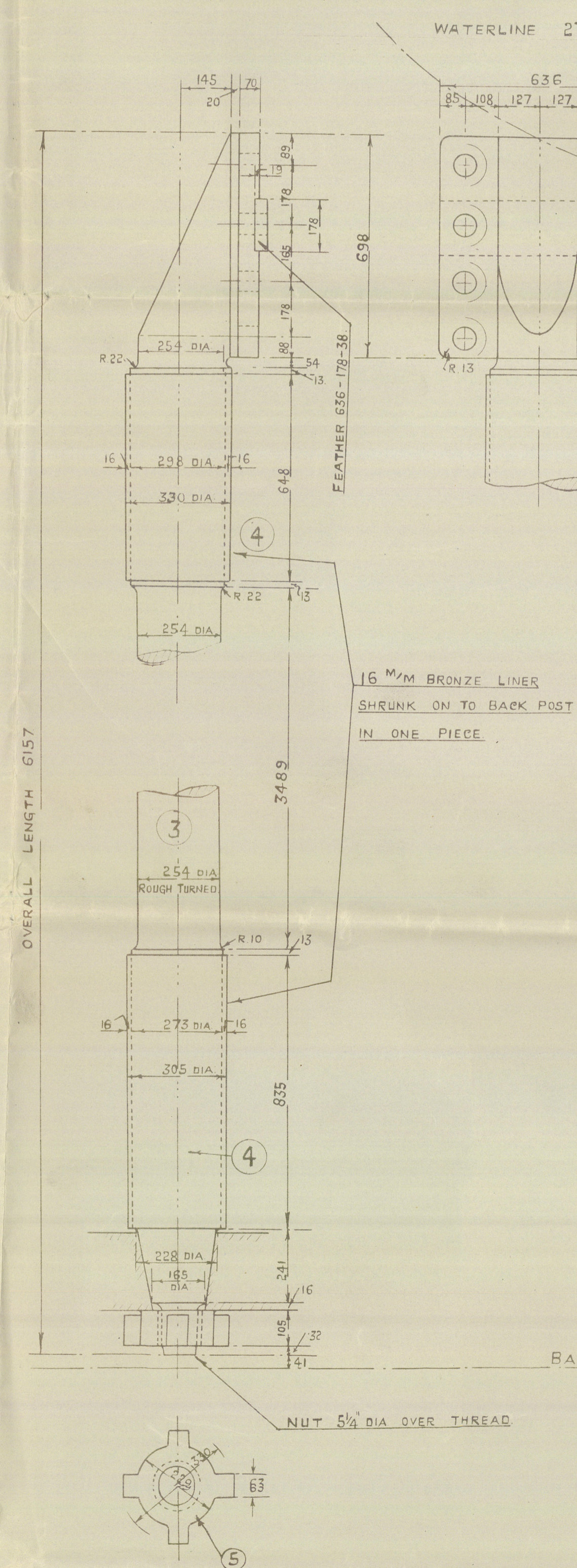
STERN FRAME.

as approved for Harbom Letter No 652

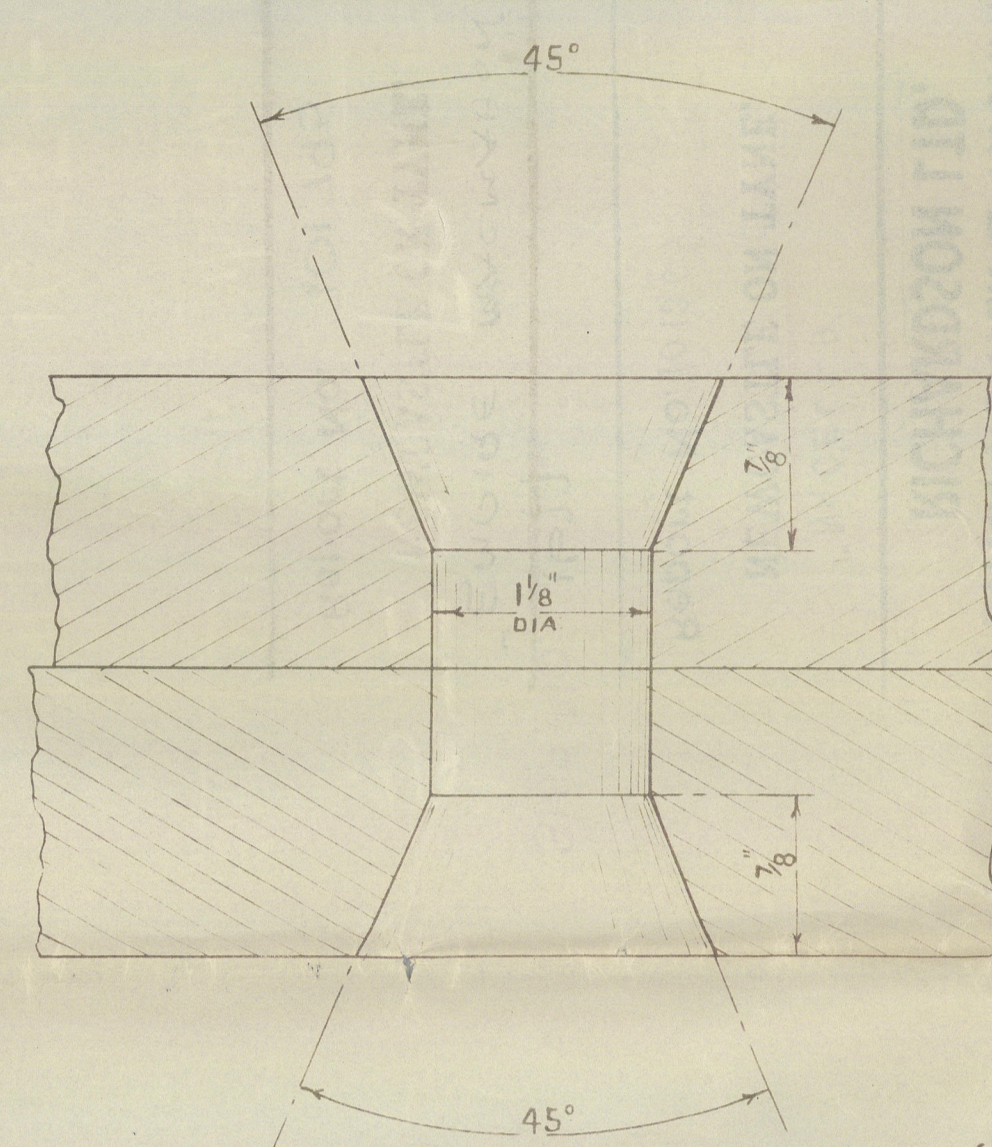
PARTICULARS:-
 LENGTH = 460' 0" = 140.21 M.
 BREADTH = 59' 0" = 17.98 M.
 DEPTH = 34' 0" = 10.36 M.
 WATERLINE = 27' 5 1/2"
 SPEED = 12 KNOTS
 RUDDER AREA = 180 sq ft
 L x D = 15040
 A x D = 387
 RUDDER ANGLE MAXIMUM = 35°

NOTES
 TO PASS LLOYDS TESTS & REQUIREMENTS
 RUDDER POST SQUARE TO BASE LINE
 BOTH PORTIONS OF STERN FRAME & RUDDER BACK POST
 TO BE ASSEMBLED & FITTED TOGETHER AT MAKERS WORKS
 BEFORE BEING DESPATCHED
 DRILLED FOR RIVETS WHERE INDICATED TO SPACING SHOWN ON PLAN
 PROPELLER ROSS CAST TO ROUGH BORE
 THROUGH RIVET HOLES TO BE BORED PLUMB THROUGH POST
 DIMENSIONS ON THIS PLAN MUST BE CAREFULLY WORKED TO
 AS ANY EXCESS OVER ESTIMATED WEIGHT WILL NOT BE PAID FOR

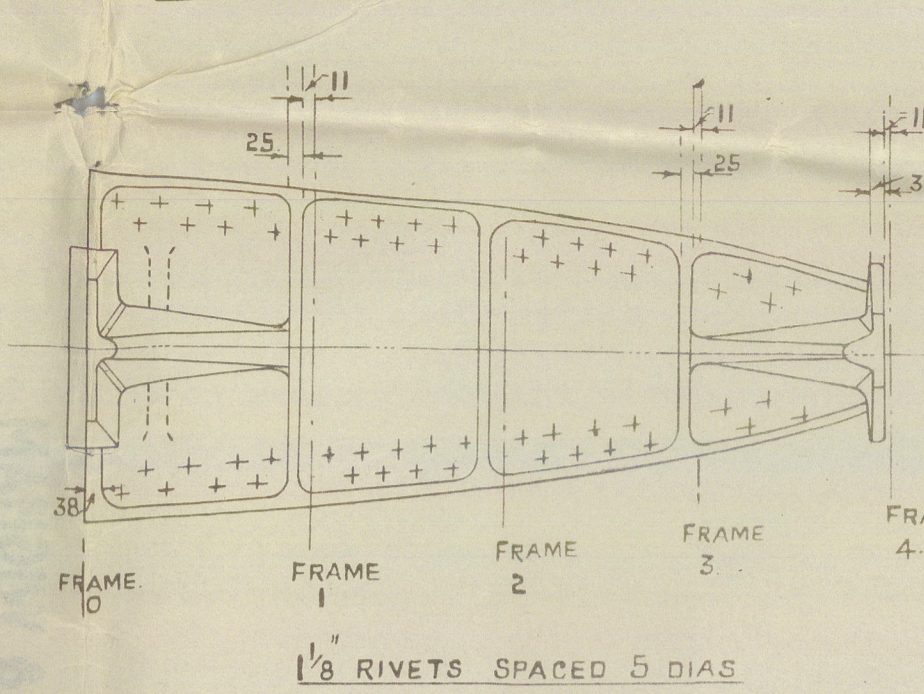
RUDDER BACK POST



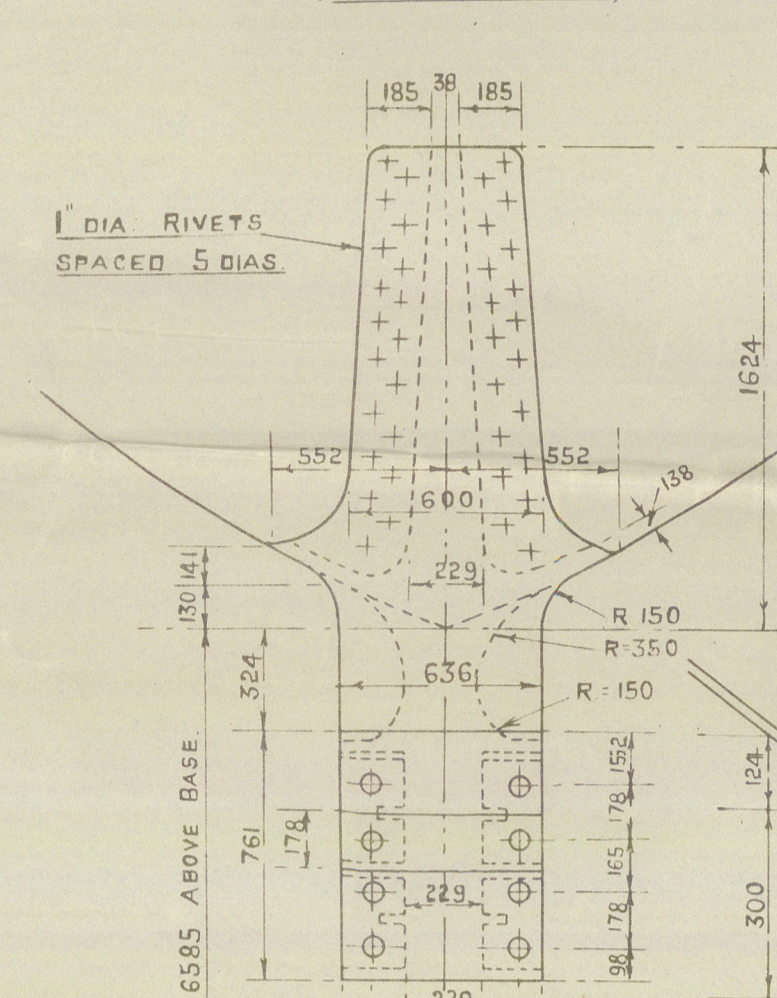
SKETCH SHOWING COUNTERSINKING IN WAY OF JOINT



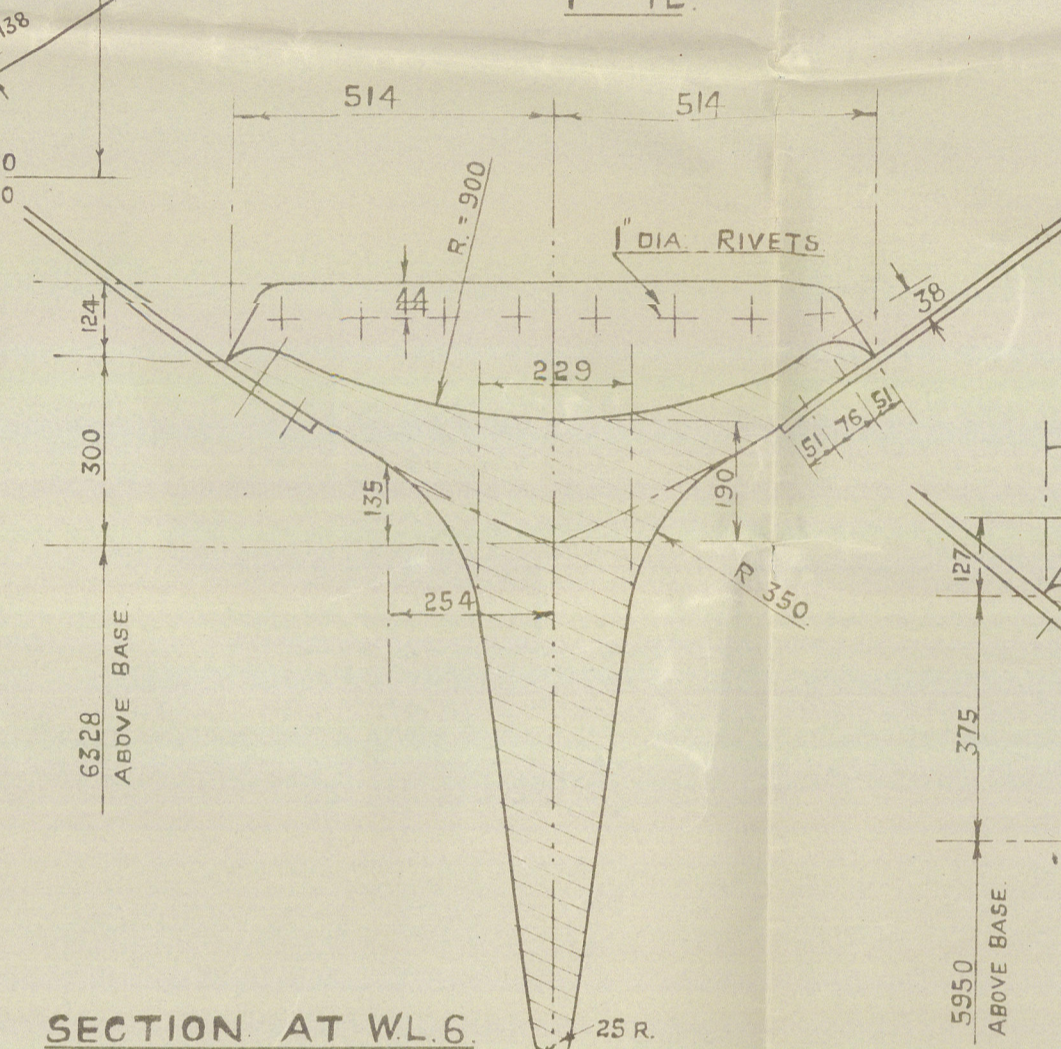
STERN FRAME TOP



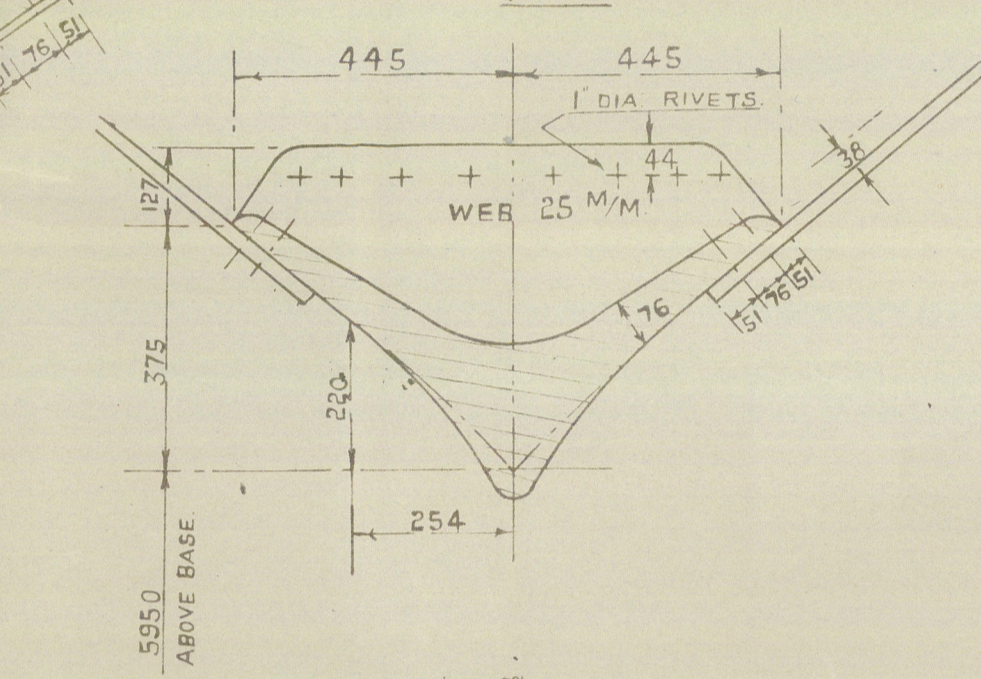
FRAME NO 0 (LOOKING FOR)



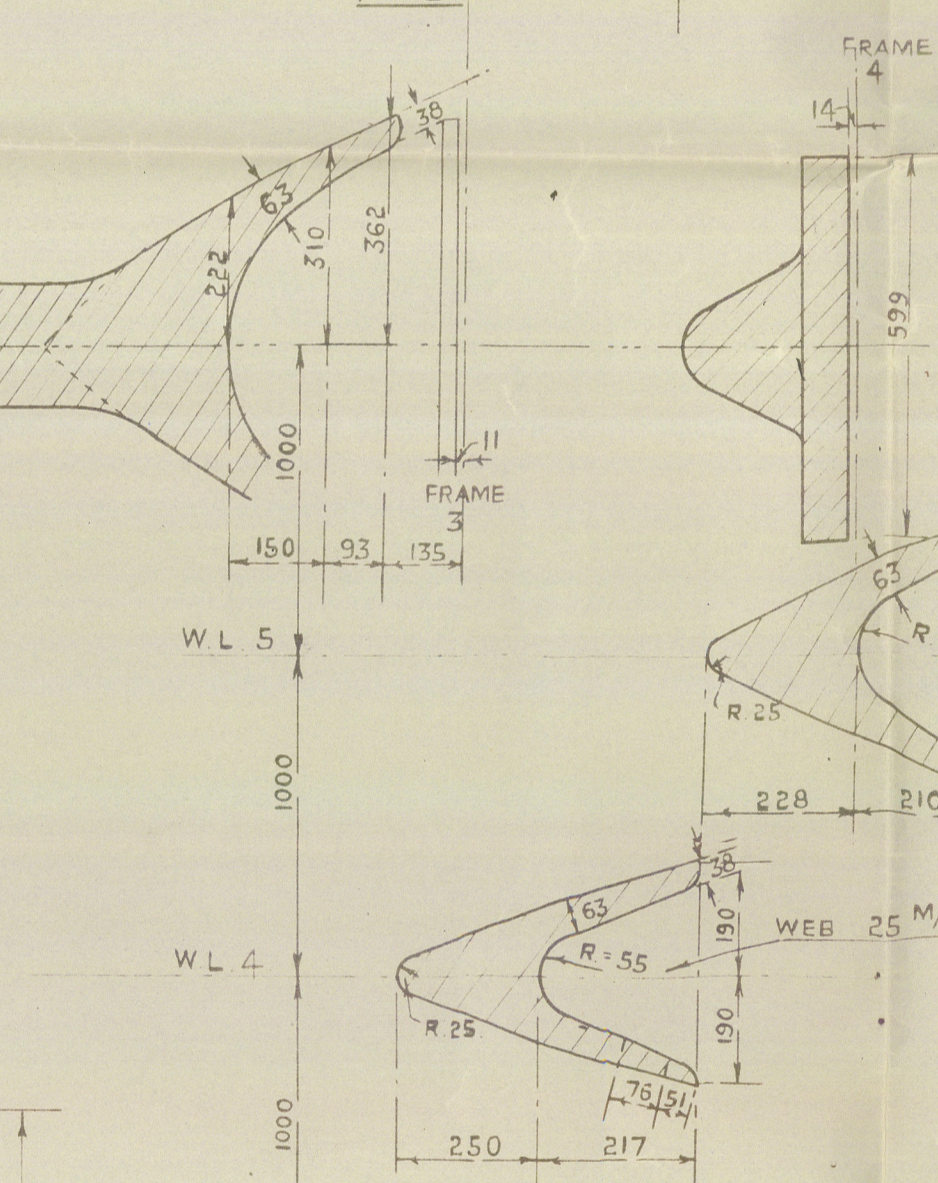
SECTION FRAME 1 1-12



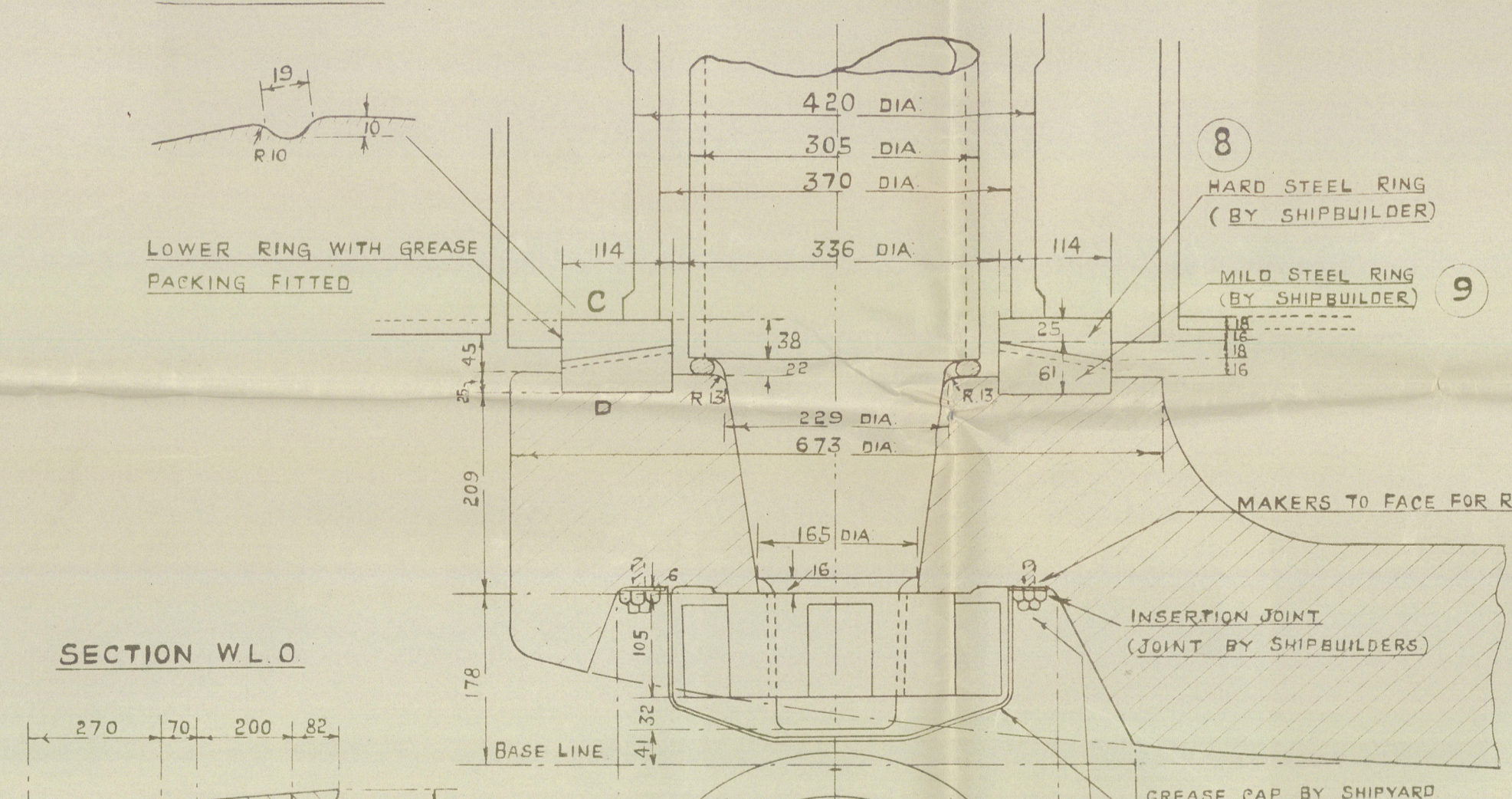
SECTION FRAME 2 1-12



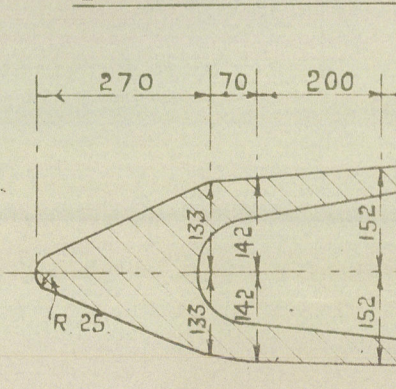
SECTION AT WL 6 1-12



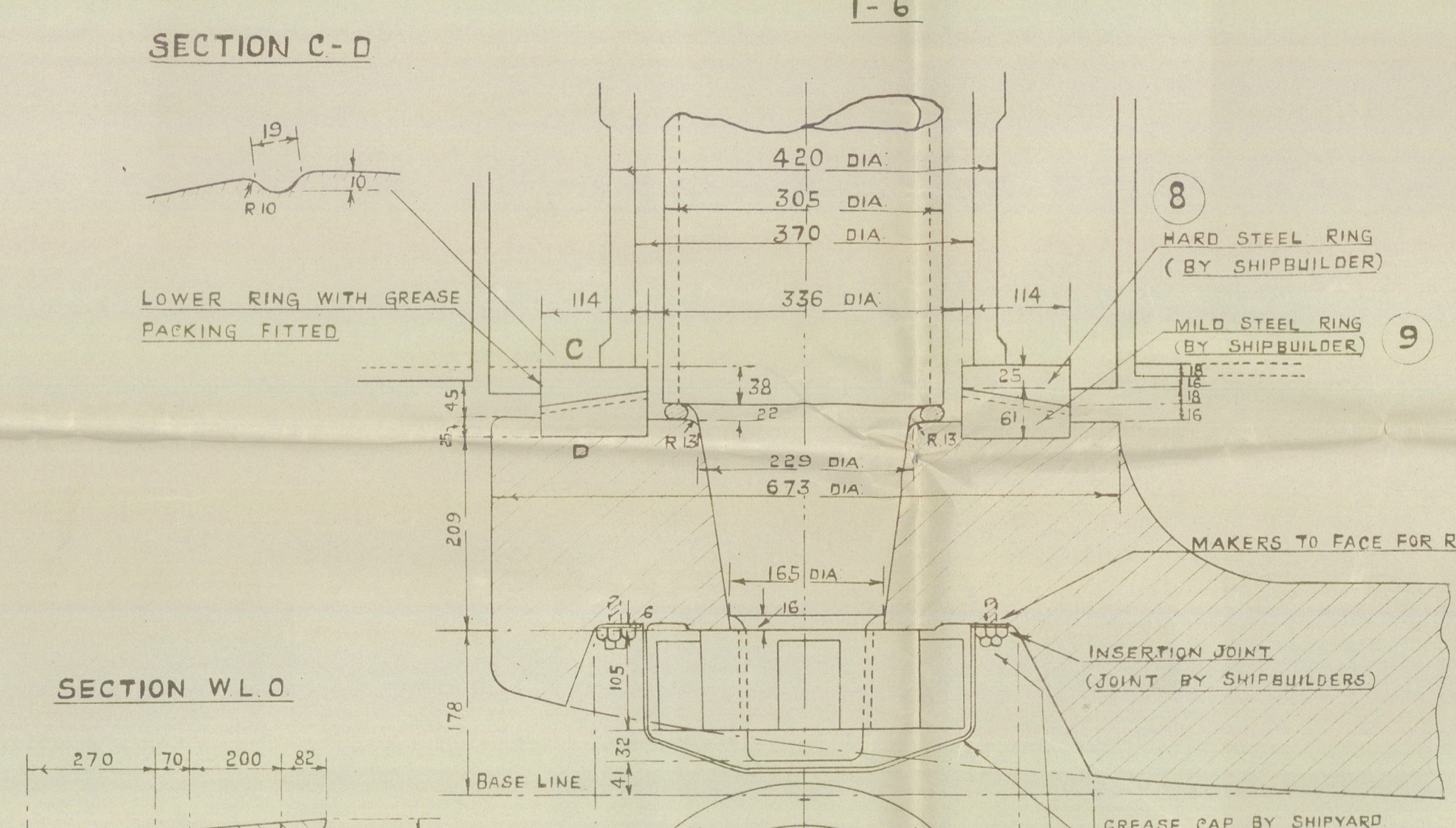
SECTION C-D 1-6



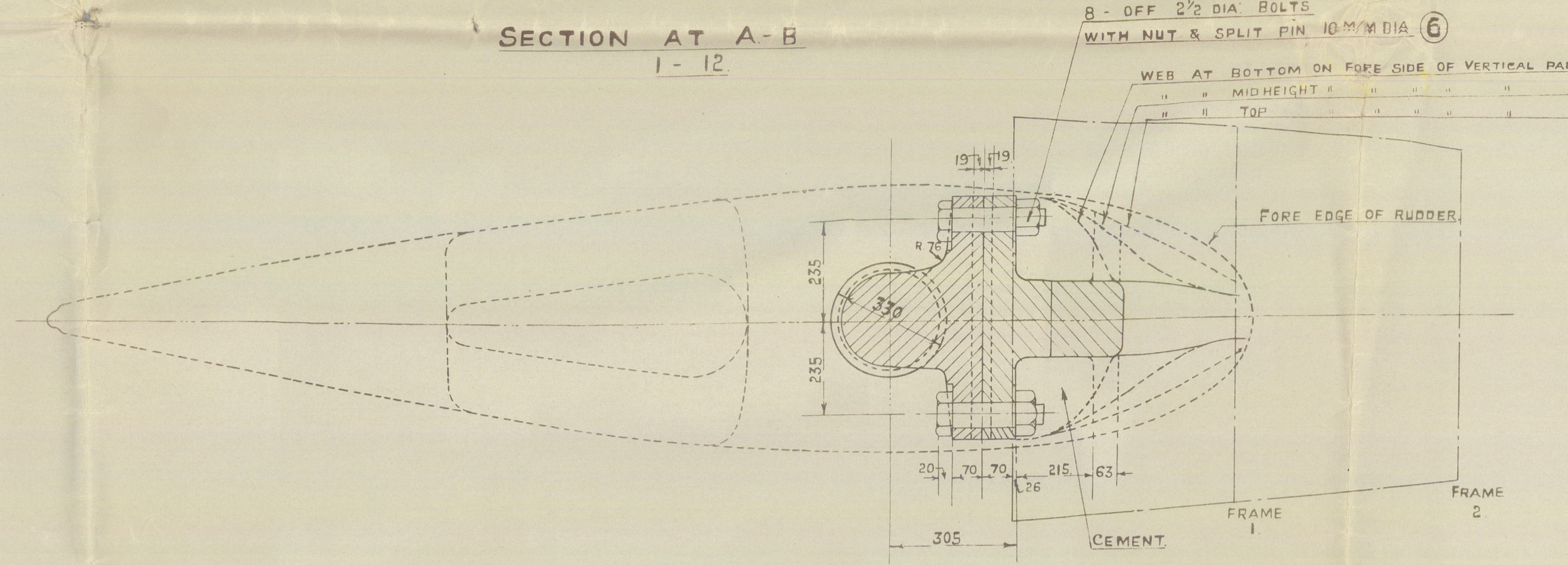
SECTION WL 0



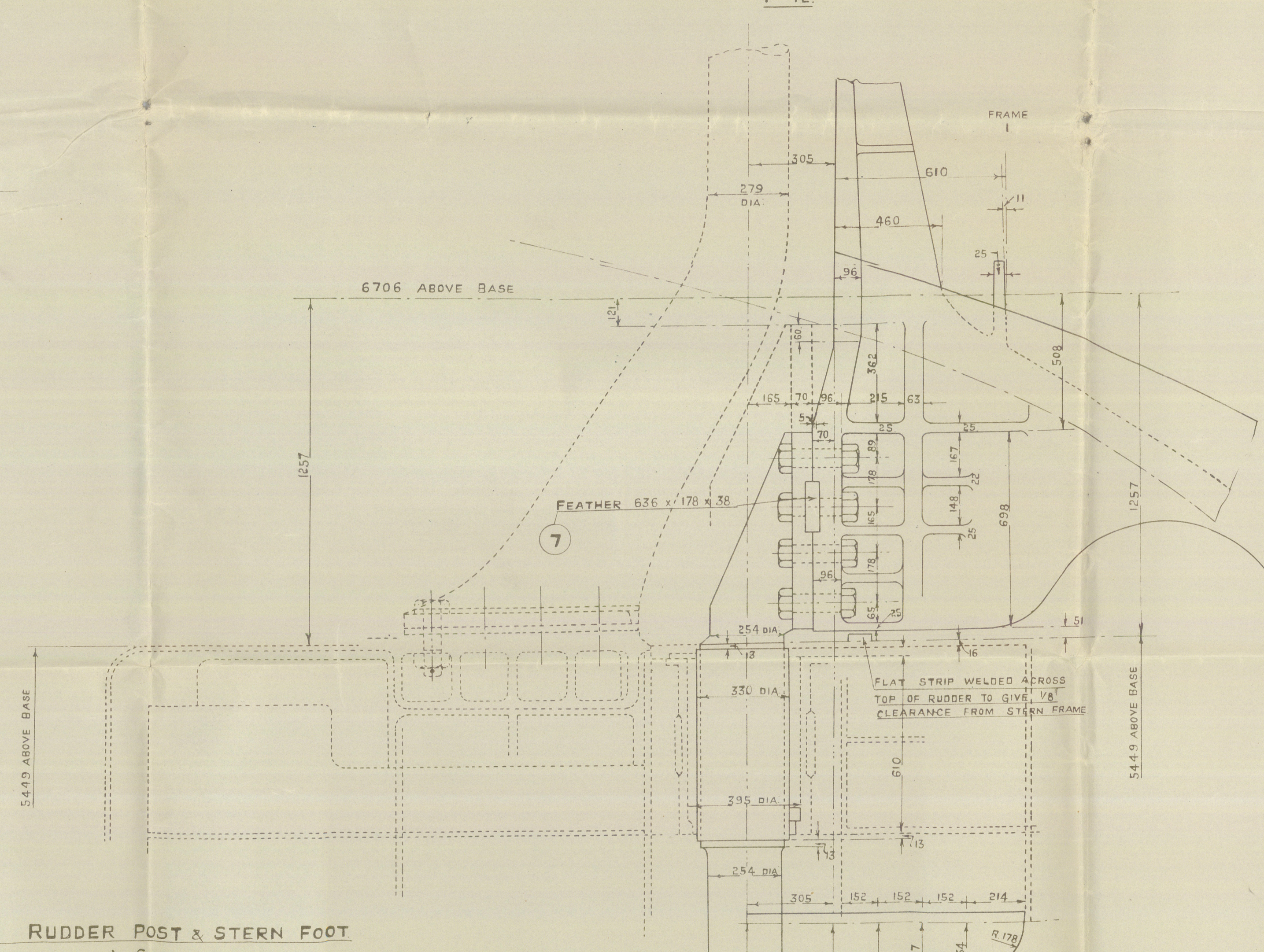
DETAIL OF RUDDER POST & STERN FOOT 1-6



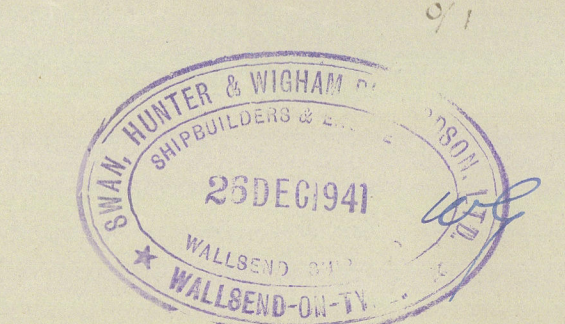
SECTION AT A-B 1-12



COUPLING OF RUDDER & STERN FRAME 1-12



REF NO	ITEM	MATERIAL	REMARKS
1	STERN FRAME (UPPER)	CAST STEEL	
2	STERN FRAME (LOWER)	CAST STEEL	
3	RUDDER BACK POST	FORGED	
4	POST LINERS	BRONZE	
5	NUT	FORGED STEEL	
6	COUPLING BOLTS	WITH NUT & SPLIT PIN	
7	FEATHER		
8	BEARING RING (UPPER)	HARD STEEL	BY SHIPBUILDER
9	BEARING RING (LOWER)	SOFT	



SWAN HUNTER & WIGHAM
RICHARDSON LTD.

"NACELLA"
NEWCASTLE ON TYNE.

Report No. 101367

SHIP No. 1677

"EMPIRE MACMAHON"

STERN FRAME
NEWCASTLE ON TYNE.

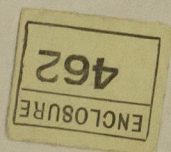
Report No. 101795

SWAN HUNTER & WIGHAM RICHARDSON LTD

Stern Frame

SHIP N^o 167547

as approved for Hawthorn
Leblais no 652.



© 2021

Lloyd's Register
Foundation

002929-002937-0177