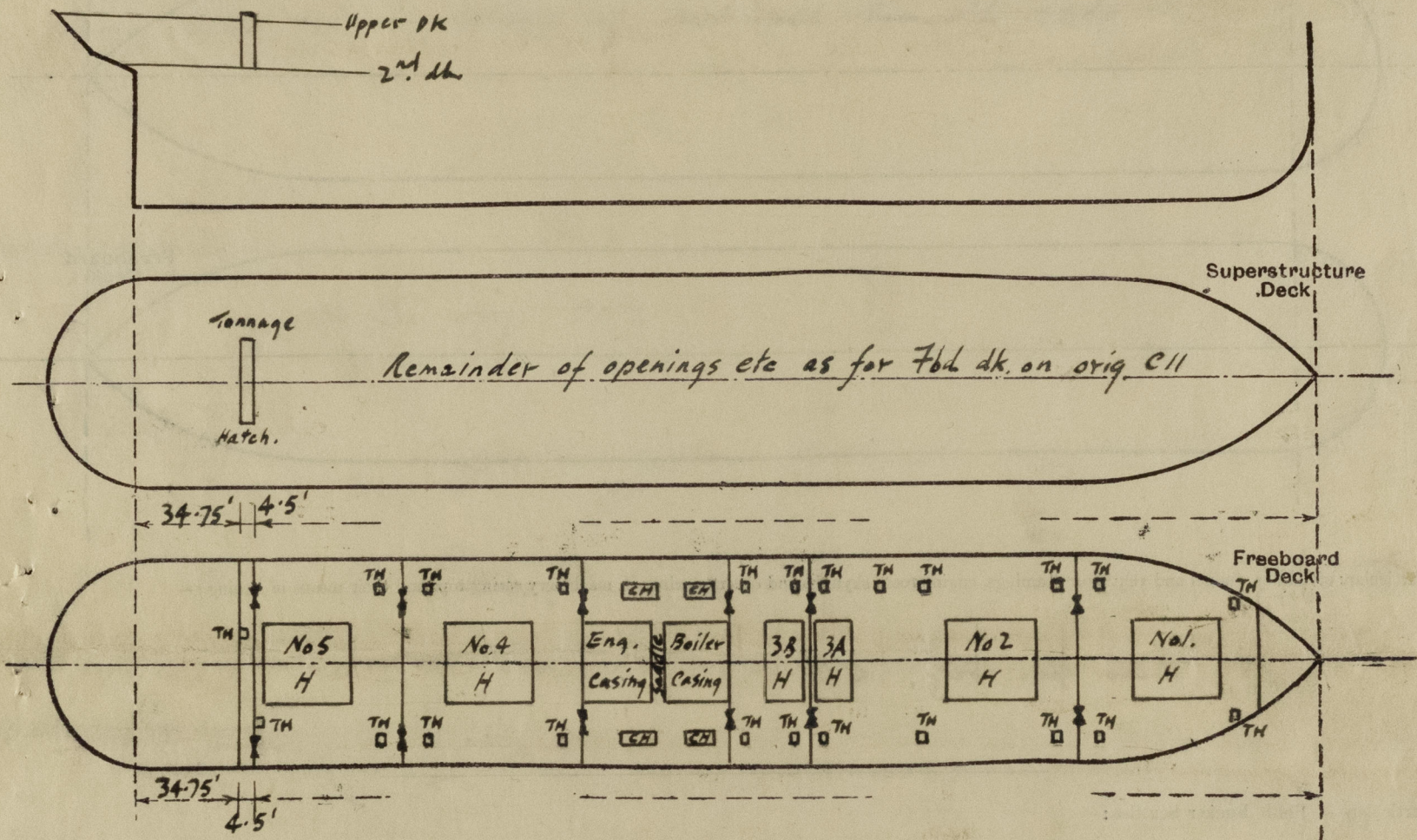


Lloyd's Register of Shipping.
SURVEYS FOR FREEBOARD.
(CONDITIONS OF ASSIGNMENT.)

Ship's Name AMPLEFORTH (ex Empire Mallory) Port of Survey Cardiff
Official Number 168684 Surveyor's Signature J. W. Hurst
Nationality and Port of Registry BRITISH-CARDIFF. Date of Survey 25/3/46

Disposition and dimensions of superstructures, trunks, deckhouses and machinery casings to be inserted in the diagrams and tabular statement:—

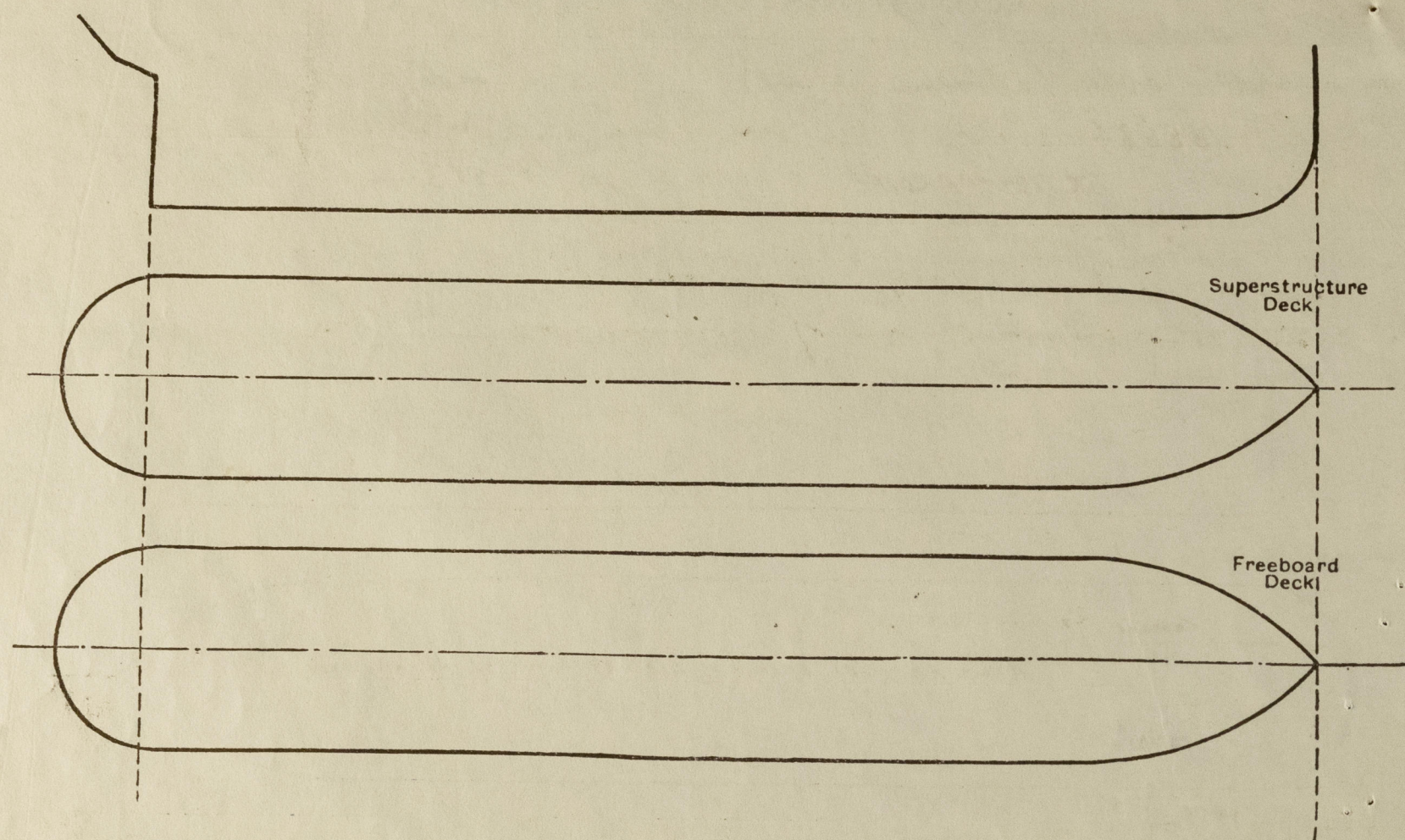


Particulars of Superstructures, Trunks, Casings, Deckhouses.								
	Coaming	Plating	Stiffeners	Spacing	End Attachments of Stiffeners	Size of Openings	Height of Sills	Height of Casings
Poop Bulkhead ...	28	Plating	flanged 3"	38"	none.	none	—	8'-9"
Raised Quarter Deck Bulkhead ...								
Bridge, After Bulkhead ...	32	Plating	3 1/2 x 3 1/2 x 38	36"	1 riv. thro' forward. T&B	4'-1" x 3'-0"	22"	8'-9"
Bridge, Forward Bulkhead ...								
Forecastle Bulkhead ...								
Trunk, Aft ...								
Trunk, Forward ...								
Exposed Machinery Casings on Freeboard or Raised Quarter Decks ...								
Exposed Machinery Casings on Superstructure Decks ...								
Machinery Casings within Superstructures not fitted with Class I Closing Appliances ...	30	Plating	5 x 3 x 30A	54"	Blind rivets only.	1'-10" x 1'-10"	6'-0"	8'-9"
Deckhouses on Flush Deck Ships ...								

Particulars of Closing Appliances (state if capable of being manipulated from both sides).	
Poop Bulkhead ...	No openings
Raised Quarter Deck Bulkhead ...	
Bridge, After Bulkhead ...	Wood shifting boards in steel channels
Bridge, Forward Bulkhead ...	
Forecastle Bulkhead ...	
Exposed Machinery Casings on Freeboard or Raised Quarter Decks ...	
Exposed Machinery Casings on Superstructure Decks ...	As per orig C11 for exposed on fbd deck.
Machinery Casings within Superstructures not fitted with Class I Closing Appliances ...	Hinged steel doors operated from both sides
Deckhouses on Flush Deck Ships ...	

PARTICULARS OF PROTECTION TO OPENINGS, ETC.

The following diagrams should be used to indicate the positions of cargo and coaling hatchways, gangway, cargo and coaling ports, ventilators, companionways, etc., which would affect the seaworthiness of the ship:—



Particulars of fiddle, funnel and ventilator coamings, engine room skylight and other openings in machinery casing tops and their means of closing:—

As per orig. C11. ✓

Particulars of Flush Bunker Scuttles:—

None.

Particulars of Companionways:—

As per orig. C11. ✓

Particulars of Ventilators in exposed positions on freeboard and superstructure decks:—

As per orig C11 except that the 2-9" dia C. Vents to crew quarters have been extended to 8'-6" high the deckhead the 1-9" CY to steering gear space have been extended to 8'-6" high one additional floor vent, coaming 8'-6" high x 32 has been fitted to steering gear space. All efficiently fitted to house.

Particulars of Air Pipes in exposed positions on freeboard, raised quarter, or superstructure decks:—

As per orig C11. ✓

Particulars of Gangway Cargo and Coaling Ports:—

None. ✓

Particulars of Scuppers and Sanitary Discharge Pipes:—

Sanitary discharges & steering gear space scupper remain as originally fitted.
1-3 1/2" dia scupper each side of 2nd deck amidships led to machinery space bilges & fitted with self closing coaks at lower ends.
Drain holes cut in corners of divisional transverse bulkheads.

Particulars of Side Scuttles:—

As per orig. C11.

Vertical distance of Sill of lowest Side Scuttle above top of keel

Particulars of Guard Rails:—

As per orig. C11.

Particulars of Gangways, Lifelines, etc.:—

As per orig C11.

Particulars of Freeing Arrangements.

	Length of Bulwark	Height of Bulwark	Size of Freeing Ports	Number each side	Area each side	Rule area each side
After Well	4'-6"	8'-9"	5 1/4" x 5 1/4" screw down automatic iron return valve controlled from upper deck with indicator showing whether valve is open or shut	One.		
Forward Well						

State position of each freeing port { After Well:—
(F. and A. position and height above deck edge) { Forward Well:—

State whether the freeing ports are fitted with shutters, bars, or rails, and give particulars of such:—

Additional area where sheer is less than standard.

PARTICULARS OF PROTECTION TO OPENINGS, ETC.

HATCHWAYS ON FREEBOARD AND SUPERSTRUCTURE DECK.											Superstr. Deck.
Description of Hatchway	No 1	No 2	No 3 A	No 3 B	No 4	No 5	23' main hold	Fore hold P.S.	Afters hold P.S.	Tonnage hold	
Dimensions of Hatchway	29'3x20'	29'3x20'	13'6x20'	13'6x20'	29'3x20'	29'3x20'	2'x2'	8'8x4'9"	10'11x4'9"	4'6x20'	
COAMINGS											
Height above Deck	9"		9"				9"	9"	9"	12"	
Thickness	.44		.44				.44	.44	.44	.56	
Stiffeners	.44		.44				.44	.44	.44	.56	
Brackets, Stays	—		—				—	—	—	—	
HATCH BEAMS											
Number	5		2								
Spacing	4-10 1/2		4-6								
Scantling and Sketch	Plate 18x36 cr. 16" sides Ang. A B 5x3x38 Bearing Surface 3 1/2"		17x35 cr. 15" sides 5x3x38 3 1/2"								
FORE AND AFTERS											
Number											
Spacing											
Unsupported Lengths											
Scantling and Sketch											
Bearing Surface											
HATCH COVERS											
Material	W.W.		W.W.				W.W.	W.W.	W.W.	W.W.	
Thickness	2 3/8		2 3/8				2 3/8	2 3/8	2 3/8	2 3/8	
How fitted	71A		71A				Athwart	Athwart	Athwart	71A	
Bearing Surface	3"		3"				2 1/2	3	3	3	
Spacing of Cleats	24"		24"				12"	24"	24"		
Number of Tarpaulins	one.		one.				one	one	one.		

*Are wood fore and afters steel shod at all bearing surfaces? —
 Are battens and wedges efficient and in good condition? Yes
 Are tarpaulins in good condition and in accordance with rule requirements? Yes
 Are lashings provided in accordance with rule requirements? —

Particulars of any special features:—

Hatch to magazine & hatch to steering gear cut off & holes in deck
 immediately closed by welded plates.
 Width of shellin deck at middle of tonnage beam 46'-5"
 all shellin from deck scuffing to hold bays removed & holes in deck
 closed by welded plates.
 No displacement figures are available
 Deadweight at 26-6 1/2 extreme draft 9395 tons
 " " 25-0 " 8560 "
 Difference 835 "
 Tons/inch at 25-0 extreme draft 44.6.

Endorsement at first survey and at surveys for renewal of Certificate:—

The fittings and appliances are in accordance with the particulars shown on this form (or as now modified) and are in good condition.

J. W. Shroton
 Cardiff 25/3/46.

