

PLAN NO 1

NO 677 G M.V. "ELMIBANK"

MIDSHIP SECTION

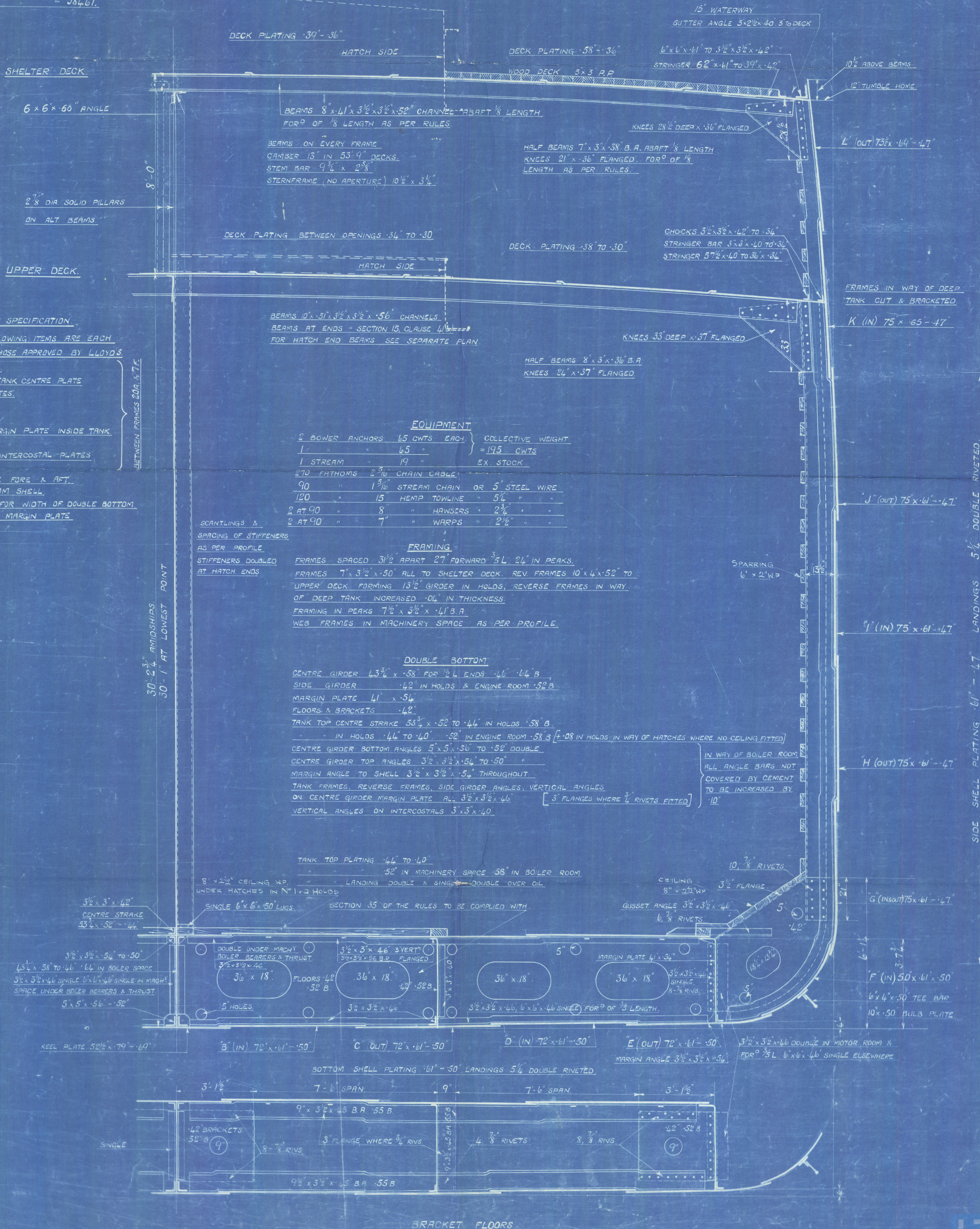
DIMENSIONS: 420'-0" B.P. x 53'-9" M^{LD} x 38'-1" K. TO B.

SCALE $\frac{1}{2}$ " = 1 FOOT.

TO CLASS 100 A.1. [WITH FREEBOARD.]

NUMERALS

D = 37.15 d = 25.56
 L x D = 419.5 x 37.15 = 15584
 L x (B+D) = 419.5 (53.75 + 37.15) = 38133
 $\frac{L}{D}$ TO SHELTER DECK = 11.3
 EQUIPMENT N°
 38133 + 328 = 38461.



EXTRACTS FROM SPECIFICATION

THE THICKNESSES OF THE FOLLOWING ITEMS ARE EACH TO BE INCREASED 10% ABOVE THOSE APPROVED BY LLOYD'S.

- VERTICAL TANK CENTRE PLATE.
- TOP & VERTICAL ANGLES OF TANK CENTRE PLATE.
- SOLID & BRACKET FLOOR PLATES.
- TANK REVERSE FRAMES.
- TANK MARGIN PLATE.
- VERTICAL ANGLE ON TANK MARGIN PLATE INSIDE TANK INTERCOSTAL PLATES.
- TOP & VERTICAL ANGLES ON INTERCOSTAL PLATES.
- TANK TOP PLATING.
- SHELTER DECK SHEER STRAKE FORE & AFT.
- FLAT KEEL PLATES & BOTTOM SHELL.
- PLATING FOR 2 OF 3 LENGTH FOR WIDTH OF DOUBLE BOTTOM, I.E. FROM MARGIN PLATE TO MARGIN PLATE.

EQUIPMENT

2 BOWER ANCHORS	65 CWTs EACH	COLLECTIVE WEIGHT = 195 CWTs
1 STREAM	19 "	
270 FATHOMS	2 3/4" CHAIN CABLE	EX. STOCK
90 "	1 1/2" STREAM CHAIN OR 5" STEEL WIRE	
120 "	15 HEMP TOWLINE	5 1/2 "
2 AT 90 "	8 " HAWSEERS	2 3/4 "
2 AT 90 "	7 " WARPS	2 1/2 "

SCANTLINGS &
 SPACING OF STIFFENERS
 AS PER PROFILE
 STIFFENERS DOUBLED
 AT HATCH ENDS

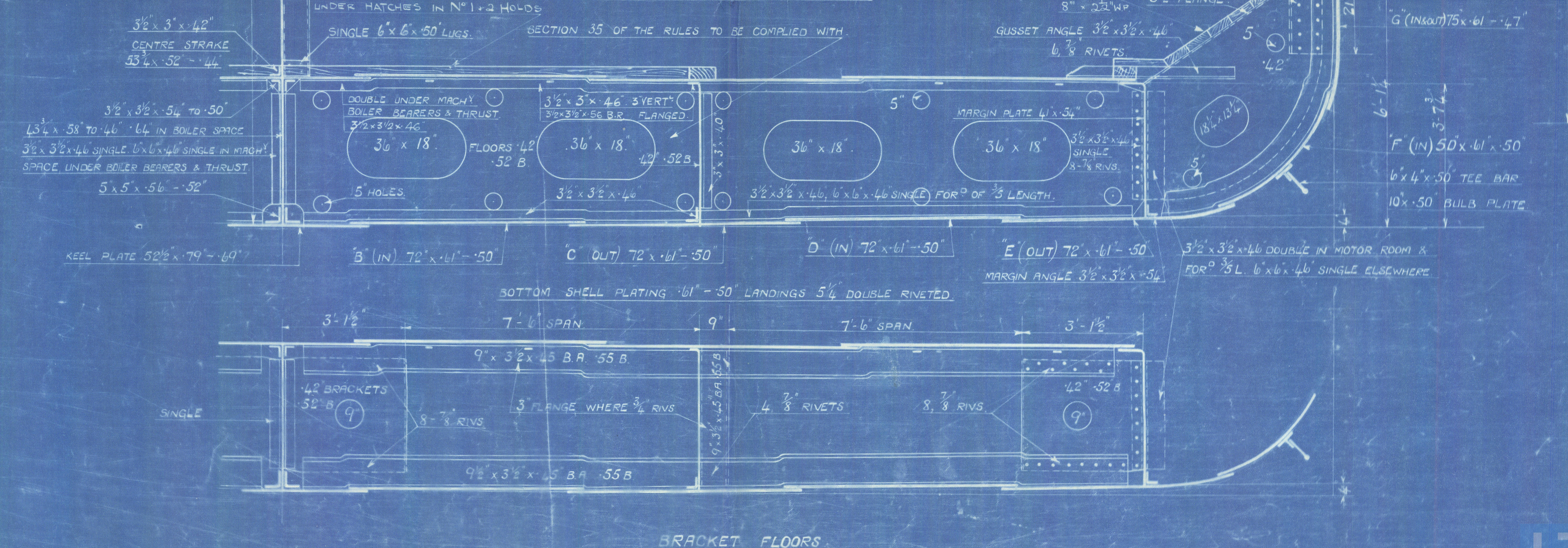
FRAMING

FRAMES SPACED 31 1/2" APART 27' FORWARD 5' L. 24" IN PEAKS.
 FRAMES 7' x 3 1/2" x 50' ALL TO SHELTER DECK. REV. FRAMES 10' x 4' x 52' TO
 UPPER DECK FORMING 13 1/2" GIRDER IN HOLDS, REVERSE FRAMES IN WAY
 OF DEEP TANK INCREASED 1/4" IN THICKNESS.
 FRAMING IN PEAKS 7 1/2" x 3 1/2" x 41' B.A.
 WEB FRAMES IN MACHINERY SPACE AS PER PROFILE.

DOUBLE BOTTOM

CENTRE GIRDER 13 3/4" x 58" FOR 12' L. ENDS 14" 64" B.
 SIDE GIRDER 14 1/2" IN HOLDS & ENGINE ROOM 52" B.
 MARGIN PLATE 41" x 54"
 FLOORS & BRACKETS 14 1/2"
 TANK TOP CENTRE STRAKE 56 3/4" x 52" TO 44" IN HOLDS 58" B.
 " IN HOLDS 44" TO 40" 52" IN ENGINE ROOM 58" B. 1/2" 1/8" IN HOLDS IN WAY OF HATCHES WHERE NO CEILING FITTED
 CENTRE GIRDER BOTTOM ANGLES 5" x 5 1/2" x 50" TO 52" DOUBLE
 CENTRE GIRDER TOP ANGLES 3 1/2" x 3 1/2" x 54" TO 50" "
 MARGIN ANGLE TO SHELL 3 1/2" x 3 1/2" x 54" THROUGHOUT
 TANK FRAMES, REVERSE FRAMES, SIDE GIRDER ANGLES, VERTICAL ANGLES
 ON CENTRE GIRDER MARGIN PLATE ALL 3 1/2" x 3 1/2" x 46" [3 FLANGES WHERE 1/4" RIVETS FITTED]
 VERTICAL ANGLES ON INTERCOSTALS 3 1/2" x 40"

TANK TOP PLATING 44" TO 40"
 52" IN MACHINERY SPACE 58" IN BOILER ROOM
 LANDING DOUBLE & SINGLE DOUBLE OVER OIL
 SINGLE 6' x 6' x 50" LUGS
 SECTION 35 OF THE RULES TO BE COMPLIED WITH



002923-002928-0038 2/2

© 2020 4-19-25

HARLAND & WOLFF LIMITED,
GOVAN, GLASGOW.

THIS ENCLOSURE TO BE SENT TO

Lloyds Register of Shipping
Glasgow

Harland & Wolff's 677 G.

M.V. "ELMBANK"

Midship Section as built.

Transferred to Inverbank
from Elmbank

GLASGOW REPORT No 44610



© 2020

Lloyd's Register
Foundation

002928-002928-0038 1/2