

Lloyd's Register of Shipping.

SURVEYS FOR FREEBOARD.

(CONDITIONS OF ASSIGNMENT.)

12 NOV 1944

Ship's Name "ENFORCER".

Port of Survey Hull.

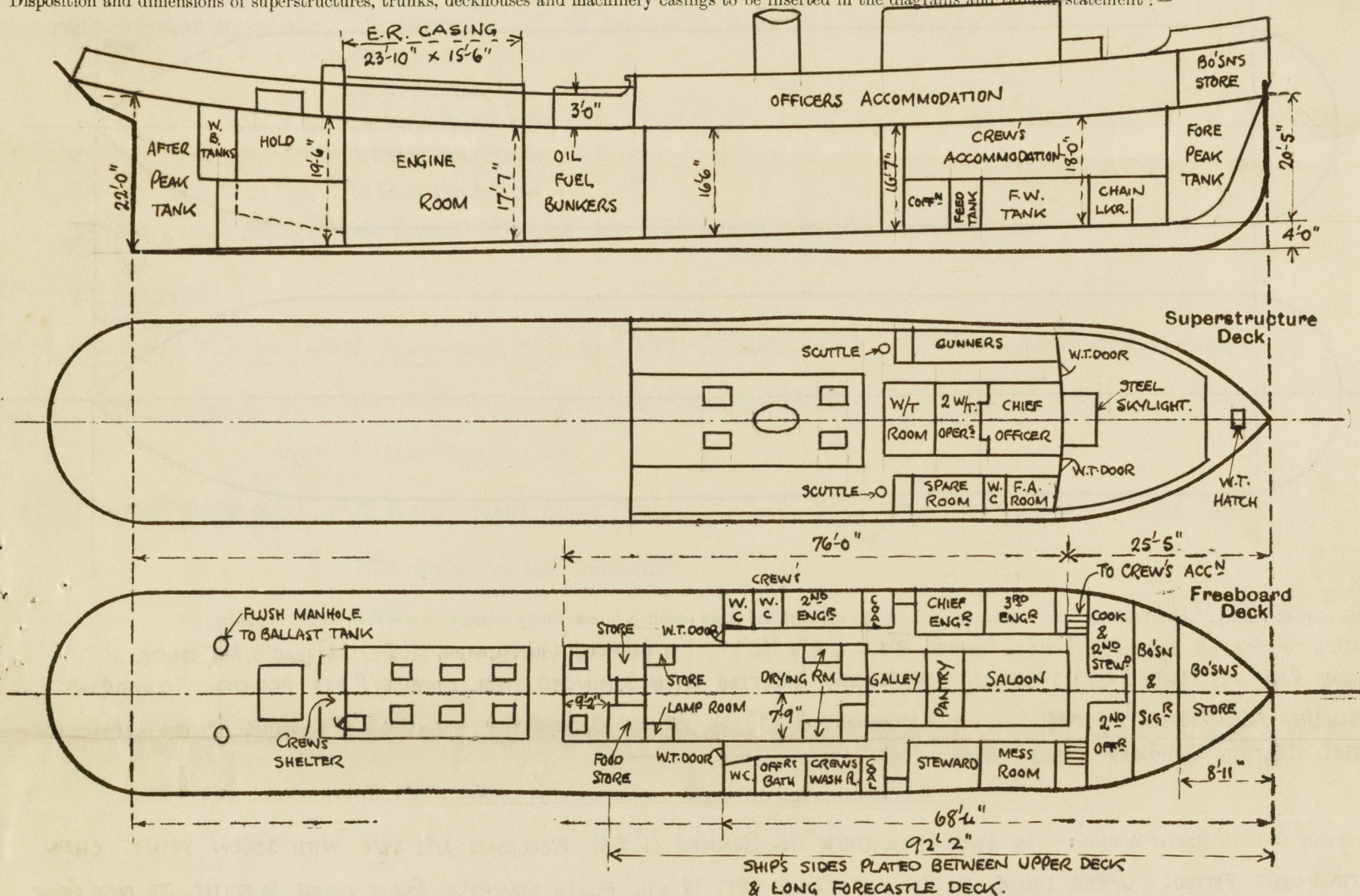
Official Number ✓

Surveyor's Signature J. Macleod

Nationality and Port of Registry BRITISH - ✓

Date of Survey During construction

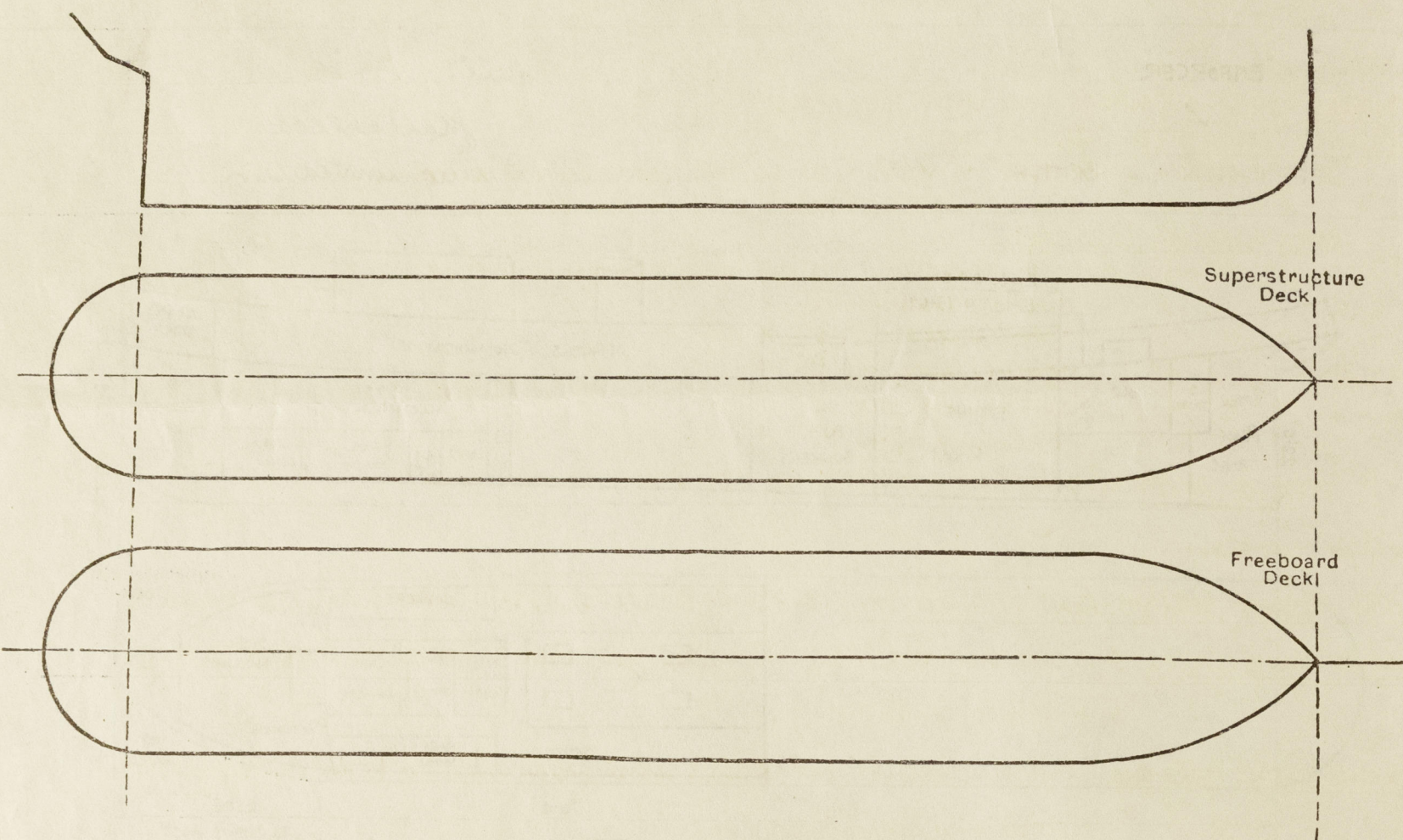
Disposition and dimensions of superstructures, trunks, deckhouses and machinery casings to be inserted in the diagrams and tabular statement:—



Particulars of Superstructures, Trunks, Casings, Deckhouses.								
	Coaming	Plating	Stiffeners	Spacing	End Attachments of Stiffeners	Size of Openings	Height of Sills	Height of Casings
Poop Bulkhead ...								
Raised Quarter Deck Bulkhead ...								
Bridge, After Bulkhead ...								
Bridge, Forward Bulkhead ...								
Forecastle Bulkhead ...								
Trunk, Aft ... (FRAME NO 32-37).	32	32	4" x 3" x 30" Γ	30"	BKTS AT TOP	2 O.T. HATCHWAYS ON TRUNK TOP 2'6" x 2'6"	✓	3'-0"
Trunk, Forward ...	✓	✓						
Exposed Machinery Casings on Freeboard or Raised Quarter Deck ...	32	32	3" x 2 1/2" x 30" Γ	30"	BKTS AT TOP	3'-3 1/2" x 2'-2"	24"	4'-0" AT C.L. 3'-0" SIDE.
Exposed Machinery Casings on Superstructure Deck (BOILER CASING) ...	18" x 32	28	7 x 3 x 40 Γ	30"	BKTS AT TOP	NONE	✓	7'-3"
Machinery Casings within Superstructures not fitted with Class I Closing Appliances ...	✓	✓	3 1/2" x 3" x 30" Γ					
Deckhouses on Flush Deck Ships ...	✓	✓						

Particulars of Closing Appliances (state if capable of being manipulated from both sides).	
Poop Bulkhead ...	
Raised Quarter Deck Bulkhead ...	
Bridge, After Bulkhead ...	
Bridge, Forward Bulkhead ...	
Forecastle Bulkhead ...	
Exposed Machinery Casings on Freeboard or Raised Quarter Deck ...	TO BOYS & SIGNALLER, CHIEF, 2ND & 3RD ENGINEERS, COOK & 2ND STEWARD & CREW'S W.C. (PORT SIDE) WOOD DOORS 4'10" x 1'8" - 15" SILLS. TO CREW'S ENTRANCE (P. & S) WOOD DOORS 4'7" x 1'8" - 19" SILLS. TO 2ND OFFICER, MESS ROOM, STEWARD, CREW'S WASH PLACE, OFFICERS BATH ROOM & W.C. (STBD SIDE, SALOON & PANTRY - WOOD DOORS 4'10" x 1'8" - 15" SILLS. TO GALLEY - STEEL DOOR (P. & S) 4'10" x 1'8" - 12" SILLS. TO DRYING ROOM (P. & S) STEEL DOOR 4'2" x 1'8" - 23" SILLS. TO BOILER ROOM (P. & S) STEEL DOOR 3'11" x 1'8" - 24" SILLS.
Exposed Machinery Casings on Superstructure Deck ...	✓
Machinery Casings within Superstructures not fitted with Class I Closing Appliances ...	ALL DOORS FITTED WITH SPRING LOCKS OPERATED FROM BOTH SIDES. ✓
Deckhouses on Flush Deck Ships ...	✓

The following diagrams should be used to indicate the positions of cargo and coaling hatchways, gangway, cargo and coaling ports, ventilators, companionways, etc., which would affect the seaworthiness of the ship:—



CASING TOP PLATED OVER .28 THICK. FUNNEL 9'-0" x 6'-9" x 3/16". 1 STOVEHOLD VENTILATOR (P.B.S.) 28" DIAR. x 3/16" THICK. ✓
ENGINE ROOM SKYLIGHT (STEEL) STRONGLY CONSTRUCTED & FITTED WITH 3 HINGED STEEL COVERS (P.B.S.). EFFICIENT QUADRANT
SECURING ARRANGEMENTS FITTED. ✓ 2 AIR HATCHWAYS (P.B.S.) ON BOILER CASING TOP 4'-0" x 2'-0" x 6" COAMING. FITTED WITH
STEEL GRATING & HINGED STEEL COVER. ✓

Particulars of Companionways :— UPPER DECK

ENGINE ROOM COMPANION (INSIDE CREWS SHELTER) $\frac{1}{2}$ " D.I. PLATING. E.R. COAMING 30 THICK. HINGED TEAK DOOR 2" THK. SILL 24".
COMPANION TO CREWS QUARTERS ON UPPER DECK FORWARD (P.B.S) PLATING $\frac{3}{16}$ " THK. STIFFENERS $2\frac{1}{2}$ " x $2\frac{1}{2}$ " x 1/4" SPACED 36". ✓
WOOD DOORS 4'-9" x 1'-10" - 18" SILL (ENCLOSED IN PASSAGE). DOORS OPERATED FROM BOTH SIDES. ✓

Particulars of Ventilators in exposed positions on freeboard and superstructure decks :— FORECASTLE DECK

UNCASTLE DECK

9" DIAR. FRENCH HEAD VENT.- SUPPLY FAN. 1-11" TO BOTTOM OF OPENING & 2'-6" DIAR. MUSH. VENTS TO PASSAGE (ON TOP OF FORWARD SKYLIGHT).
8" " " " " TO PASSAGE (P.&S) 4'10" " " " BRACKETED TO SIDE OF SKYLIGHT.
6" " " " " BO'SNS STORE 4'0" " " " STAYED TO DECK.
6" " " " " BO'SNS & SIGNALERS CABIN. 3'-8" TO BOTTOM OF OPENING. STAYED TO DECK.
7" " " " " (EXHAUST) FROM FOOD STORE (PORT) 2'-2" " " "
8" " " " " FIREMENS & SEAMENS MESS (P.&S) 5'-2" " " - STAYED TO DECK.
5" " G.N.VENT (PORT) TO COOK & STEWARD COMPANIONWAY & 3RD ENG'N & 2ND OFFICER COMPANIONWAY & MESS ROOM (STBD) - 16" TO OPENING.
7" FRENCH HEAD TO GALLEY (PORT) IN PASSAGE. 31" TO BOTTOM OF OPENING.
6"x4" BUILT G.N.VENT TO CHIEF ENGINEER (PORT) & STEWARD (STBD) IN PASSAGE - 16" TO BOTTOM OF OPENING. ✓ VENTILATORS SUPPLIED WITH WOOD
7" DIAR. FRENCH HEAD VENT. GALLEY EXHAUST FROM FAN (STBD). 2'-9" " " PLUGS & CANVAS COVERS. F.H.
13" " " " FAN SUPPLY (P.&S) 10'-10" TO BOTTOM OF OPENING. STAYED TO DECKHOUSE. ✓ VENTS SUPPLIED WITH CANVAS
6" " MUSH. VENT TO 2ND ENGINEER (PORT). COVERS. VENTILATOR DRAININGS
5" " " CREW'S WASH PLACE & OFFICERS BATH ROOM (STBD) OVER 36" HIGH EFFICIENTLY
UPPER DECK AFT. 6" DIAR. FRENCH HEAD VENT. TO STEERING GEAR COMPT (P.&S). 2'-5" TO BOTTOM OF OPENING.
6" " " " " HOLD (P.&S). 2'-5" " " STAYED TO DECK OR DECKHOUSE.
14" " " " " (INLET) AT AFT END E.R CASING. 3'-11" " " "
12" " " " " (EXHAUST) ACREAST E.Q. 2'-6" " " "

Particulars of Air Pipes in exposed positions on freeboard, raised quarter, or superstructure decks :—**FORECASTLE DECK**

FORE PEAK TANK - 3" DIAR. 3¹/₂" TO OPENING. PROTECTED BY SPIRINETTING PLATE. ✓

FRESH WATER TANK (P. & S). 2" DIAR. 5" TO OPENING. ✓

FEED WATER TANK (P. & S). 2" " 5" " "

COFFERDAM (P. & S). 2" " 5" " " ✓

OIL FUEL BUNKER (P. & S). 6" " 11" " 4 " 4 /

UPPER DECK, OIL FUEL SIDE BUNKER (P. & S). 3" DIAR. 5'6" TO OPENING. PROTECTED BY FORECASTLE SIDE PLATING. ✓

" " BUNKER (R. & S). 3" " 3'-3" " " (ABOVE TRUNK TOP) PROTECTED BY DECK HOUSE.

BALLAST TANK AFT (P&S). 2" u 2 1/2" u u PROTECTED BY BULWARK. ✓

AFTER PEAK TANK (P-85). 3" u 26" 4 7 " " "

Particulars of Gangway Cargo and Coaling Ports:—

NONE

Particulars of Scuppers and Sanitary Discharge Pipes :—

SCUPPERS. 5-6" x 3" SCUPPERS FROM UPPER DECK (P. & S). ✓

DISCHARGES. BELOW UPPER DECK (PORT SIDE)

2-4" DIAR. G.M. STORM VALVES TO CREW'S W.C.S. 1'-6" FROM DECK TO BOTTOM OF OPENING. ✓

1 1/2" " " VALVE TO CHIEF ENGR'S FOLDING LADY. 1 1/2" FROM DECK TO BOTTOM OF OPENING. ✓

BELOW UPPER DECK (STBD SIDE).

4" DIAM. G.M. STORM VALVE TO OFFICER'S W.C. 1'-6" FROM DECK TO BOTTOM OF OPENING. ✓

2" " " " " TO OFF^{OS} BATH & W. BASIN. 1'5" " " " " " "

2" " " " " " CREW'S SHOWER & " 1'5" " " " " " " "

2" " " " " " GALLEY & PANTRY SINKS 1 1/2" " " " " " " " ✓

4" " " " " " OFFERS W.C. ON FILE OF 1/6" " " " " " " " ✓

1 1/2" " " " " " FA ROOM WASH BASIN 1 1/2" " " " " " "

CAPTAIN'S & CHIEF OFFICER'S WASH BASIN - DISCHARGE LED INTO 2" DIAR. PIPE FROM GALLEY.

Particulars of Side Scuttles:—

BELOW FREEBOARD DECK (TO CREW'S ACCOMMODATION) 4-8" DIAM. SIDELIGHTS (P.D.S.) & FITTED WITH HINGED DEADLIGHTS. ✓

SIDE OF ENGINE CASING. 3-10" DIAR. SIDELIGHTS (P.S.). $11\frac{1}{2}$ " ABOVE UPPER DECK TO BOTTOM OF SIDELIGHT & FITTED WITH HINGED DEADLIGHTS. ✓

ENGINE CASING (FORE END) - 1 16" DIAR. ESCAPE LIGHT (STBD) 6" ABOVE UPPER DECK TO BOTTOM OF ESCAPE LIGHT & FITTED WITH HINGED DEADLIGHT. ✓

Vertical distance of Sill of lowest Side Scuttle above top of keel 39'-6" FROM F.P. 15'-7 1/2" ABOVE TOP OF KEEL.

Particulars of Guard Rails :—

FORECASTLE DECK (FORWARD). 3'-9" HIGH WITH 3 RODS. STANCHIONS SPACED 4'0" ✓

" " (AFTER END). $3\frac{1}{6}$ " " " 3" ✓

" 4 AFT (AT SIDES) 1'10" " - 2 4. ✓

Particulars of Gangways, Lifelines, etc. :—


NONE

Particulars of Freeing Arrangements.						
	Length of Bulwark	Height of Bulwark	Size of Freeing Ports	Number each side	Area each side	Rule area each side
After Well	67'10"	3'6"	2'6" x 1'6"	5	16.25 ϕ	13.6 ϕ
Forward Well						

State position of each freeing port { After Well:— FROM A.R. 24'3"; 39'3"; 52'0"; 65'6"; 79'6".
(F. and A. position and height above deck edge) { Forward Well:— 7'1/2" ABOVE DECK EDGE.

State whether the freeing ports are fitted with shutters, bars, or rails, and give particulars of such:— HINGED W.P. - BALANCED TYPE. ✓

Additional area where sheer is less than standard.



© 2020
Lloyd's Register
Foundation

PARTICULARS OF PROTECTION TO OPENINGS, ETC.

HATCHWAYS ON FREEBOARD AND SUPERSTRUCTURE DECKS.									
Description of Hatchway			TRUNK TOP TO AFTER OIL FUEL BUNKERS	UPPER DECK TO SIDE OIL FUEL BUNKERS	UPPER DECK HOLD AFT	FORECASTLE DECK BO'SNS STORE FORWARD			
Dimensions of Hatchway			2 - 2'6" x 2'6"	2 (P&S) . 2'6" x 2'4 1/2"	8'0" x 6'0" 6'0" x 8'0"	2'9" x 2'9"			
COAMINGS	{	Height above Deck or TRUNK TOP..	12" /	18" /	24" /	12" /			
		Thickness { Sides30 /	.30 /	.40 /	.375 /			
		{ Ends30 /	.30 /	.40 /	.375 /			
		Stiffeners	NONE /	NONE /	NONE /	NONE /			
		Brackets, Stays							
HATCH BEAMS	{	Number							
		Spacing							
		Scantling and Sketch ...							
		Bearing Surface	NONE /	NONE /	NONE /	NONE /			
FORE AND AFTERS	{	Number							
		Spacing							
		Unsupported Lengths ...							
		Scantling* and Sketch ...							
		Bearing Surface							
HATCH COVERS	{	Material	STEEL PLATE COVER /	STEEL PLATE COVER	PINE /				
		Thickness50 /	.50 /	3" /				
		How fitted	SECURED BY M.I. EYEBOLTS	SECURED BY M.I. EYEBOLTS	F&A /				
		Bearing Surface	& G.M. TOGGLES /	& G.M. TOGGLES /	3" /				
Spacing of Cleats			✓	✓	24 /				
Number of Tarpaulins					2 /				
<p>*Are wood fore and afters steel shod at all bearing surfaces? <i>None.</i></p> <p>Are battens and wedges efficient and in good condition? <i>Yes.</i></p> <p>Are tarpaulins in good condition and in accordance with rule requirements? <i>Yes.</i></p> <p>Are lashings provided in accordance with rule requirements? <i>Yes.</i></p>									

Particulars of any special features:—

Endorsement at first survey and at surveys for renewal of Certificate:—

The fittings and appliances are in accordance with the particulars shown on this form (or as now modified) and are in good condition.

