

PROFILE & DECK PLANS.

T.S. MOTOR TANKERS 450' B.P. x 61'-9" M. x 34' M.

SCALE 1/16" = 1 FOOT.

CURCHIN & WATSON,
BEVIS MARKS HOUSE,
BEVIS MARKS,
LONDON, E.C.3.

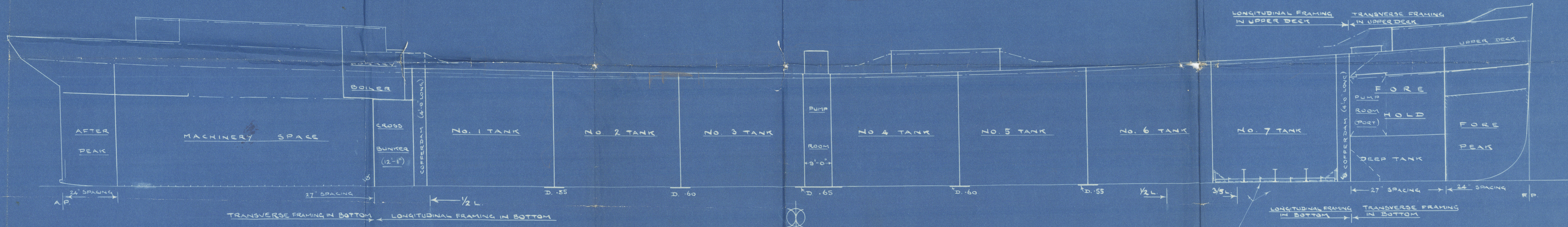


Swan, Hunter & Wigham Richardson Ltd.
Nos. 1453 & 1455

7/3/30

ARRANGEMENTS IN WAY OF
AFTER END TO BE SUBMITTED.

ARRANGEMENTS IN WAY OF
FORE END TO BE SUBMITTED.



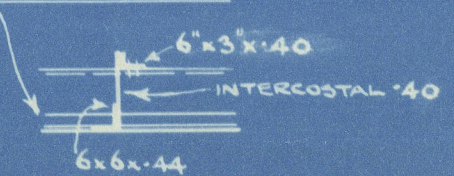
CONTINUITY OF STRENGTH TO BE
MAINTAINED AT JUNCTION OF
TRANSVERSE & LONGITUDINAL FRAMING.

DOUBLING PLATES (6' LONG) FITTED
TO TWO STRAKES OF BOTTOM SHELL
ON EACH SIDE OF THE CENTRE LINE
WHERE MARKED 'D' ABOVE.

INTERSTALS TO BE FITTED ON BOTTOM
IN CENTRE TANKS WHERE SHOWN
BETWEEN THE LONGITUDINALS IN LIEU OF
TAPERING THE SPACING OF THE LONGITUDINALS.

THREE STRAKES OF BOTTOM SHELL
NEXT THE KEEL TO BE CARRIED
FORWARD TO THE COLLISION
BULKHEAD .65

BACK BARS 3 1/4" x 3 1/4" x .44 TO BE FITTED
TO BOTTOM LONGITUDINALS IN FORWARD TANK.
(STOPPED AT TRANSVERSE FLOORS)

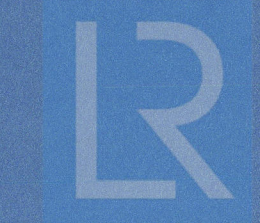
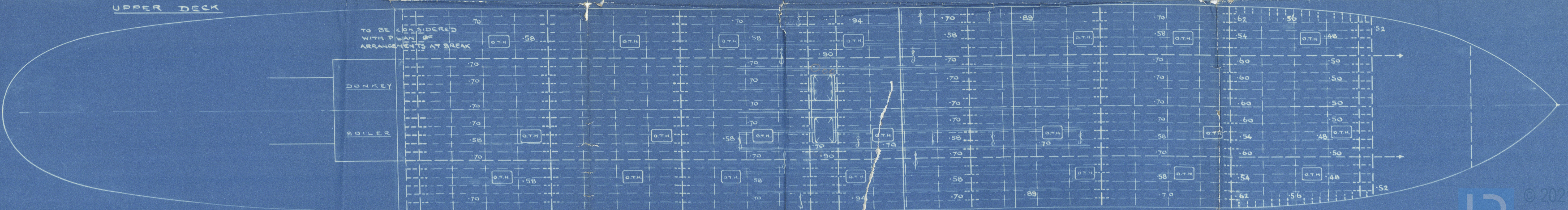


ARRANGEMENTS AT BREAK
TO BE SUBMITTED.

SHEERSTRAKE AT
POOP FRONT 1:16

SHEERSTRAKE AT BRIDGE ENDS
1:16

CORNERS OF HATCHWAYS
TO BE WELL ROUNDED.



© 2021 Lloyd's Register Foundation

007907-007915-0070

(7)

Swan. Hunter.

— " —

No. 14 53 & 55-

Profile & decks. (See also No. 2)

© 2021

Lloyd's Register
Foundation

Hawthorn, Leslie

579-80

Boxes

* "DON MANUEL" *

Hawthorn
579

M.V. "CAPRELLA"

NEWCASTLE ON TYNE.

Report No. 87395

SHOR
1453

M.V. "CARDITA"

NEWCASTLE ON TYNE.

Report No. 87554

Hawthorn
580

M.V. "CAPSA"

NEWCASTLE ON TYNE.

Report No. 87673

SHOR
1455

M.V. "CARDIUM"

NEWCASTLE ON TYNE.

Report No. 87874.



© 2021

Lloyd's Register
Foundation