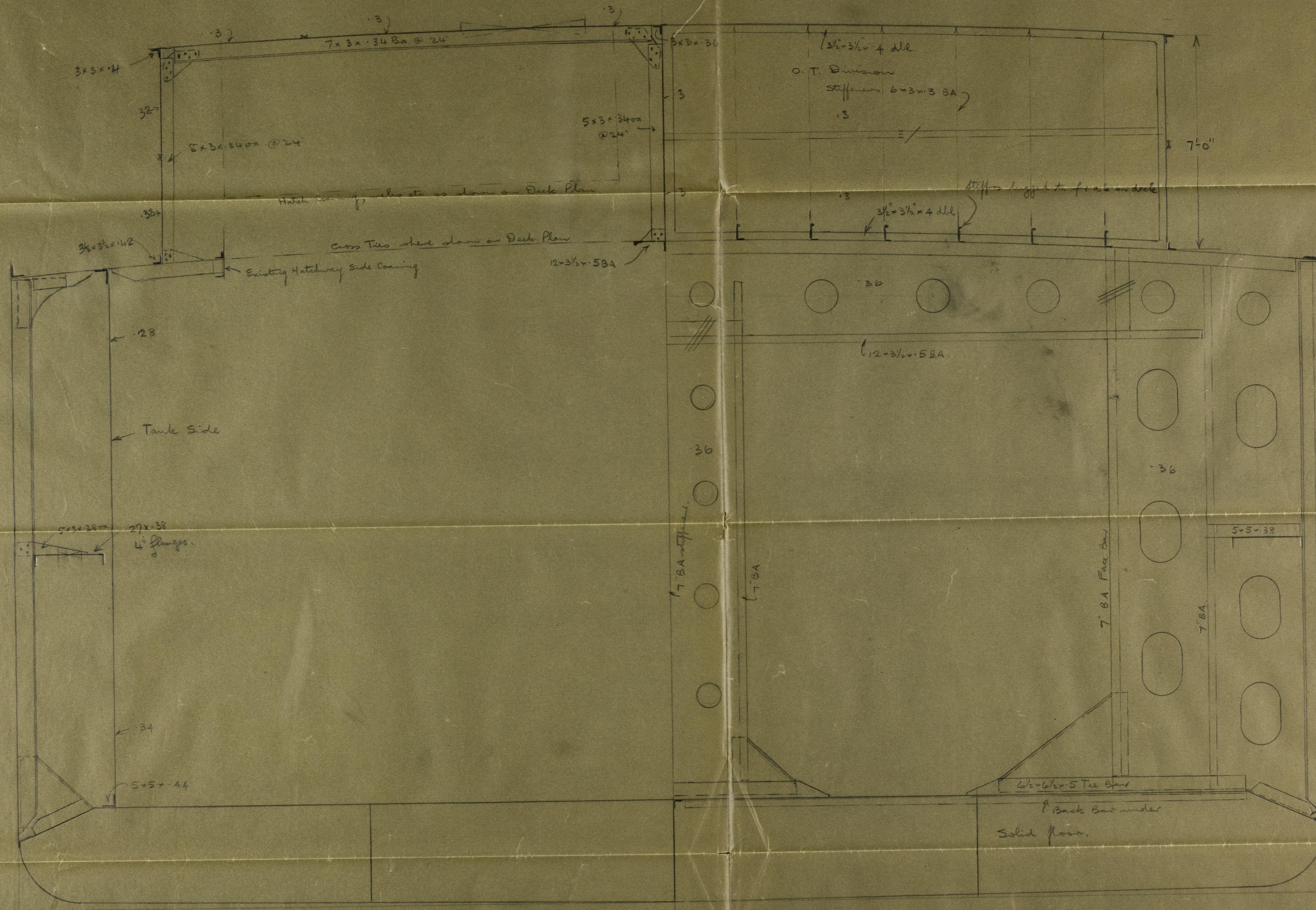


S.S. "CHEMONG" & S.S. "DRUMAHOE"

PROPOSED CONVERSION TO OIL CARRIER.

SCALE: 1/2" = 1 FOOT.



SECTION THRO' CENTRE OF CYLINDRICAL TANK.

PARTIAL BULKHEADS BETWEEN NOS 1+2 & 2+3 TANKS.

SIMILAR BULKHEADS AT FORE END OF NO. 1 TANK  
AND BREAK OF R.Q.R. DECK.

B.C. CONVERSION MIDSHIP SECTION.

5/8 "CHEMONG" & "DRUMAHOE"

30-12-31.



TOOTH  
CONVERSION OF CHEMONG  
DRUMAHOE