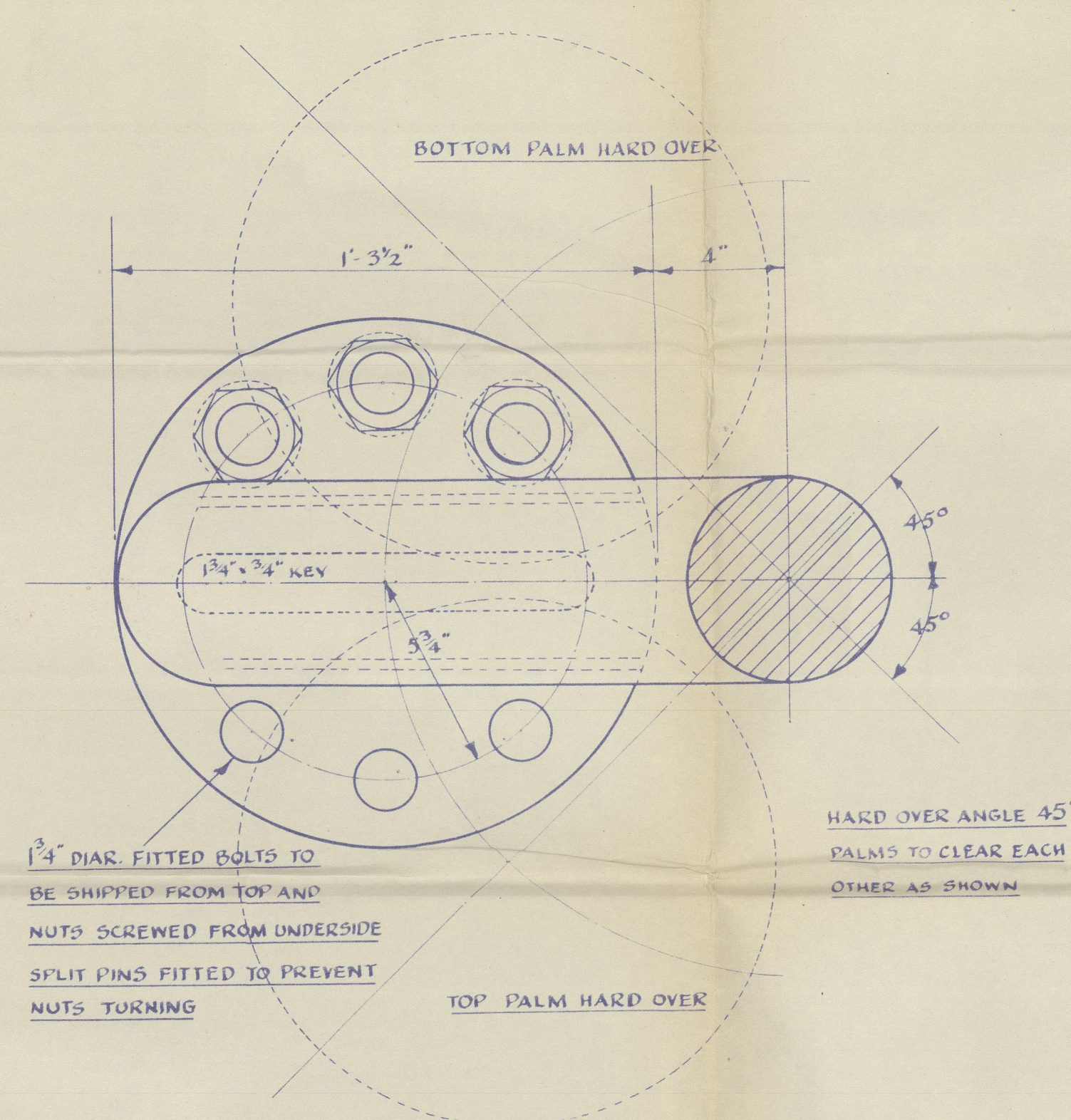
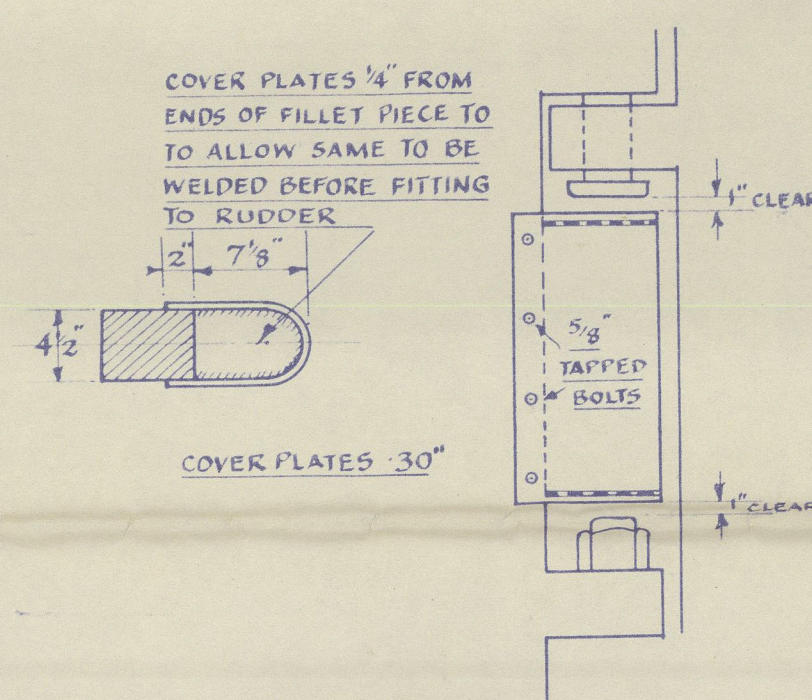


22 APR 1941

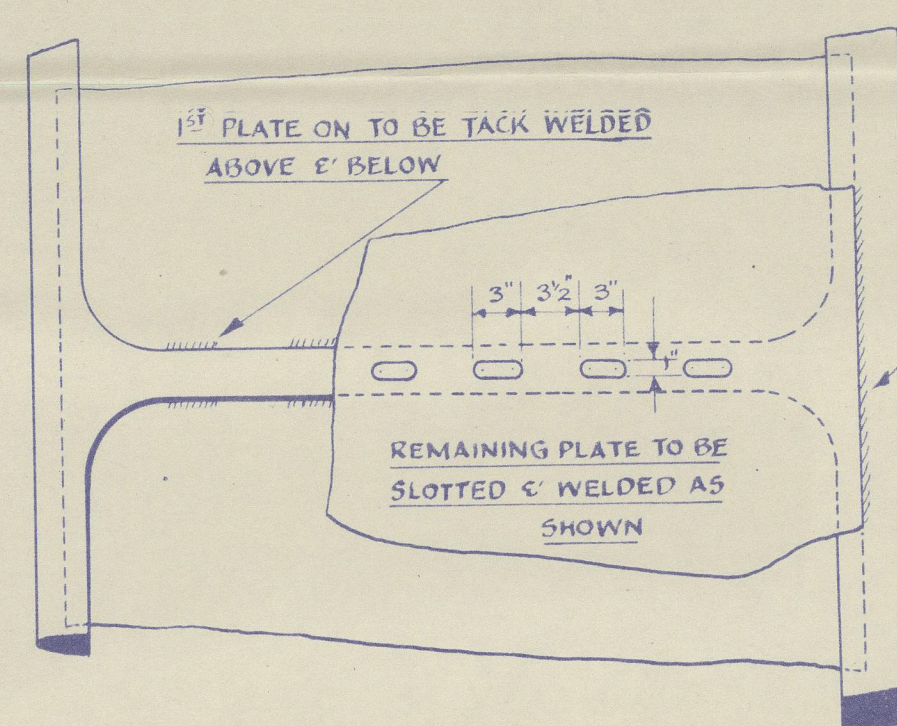


1/4" DIAM. FITTED BOLTS TO
BE SHIPPED FROM TOP AND
NUTS SCREWED FROM UNDERSIDE
SPLIT PINS FITTED TO PREVENT
NUTS TURNING

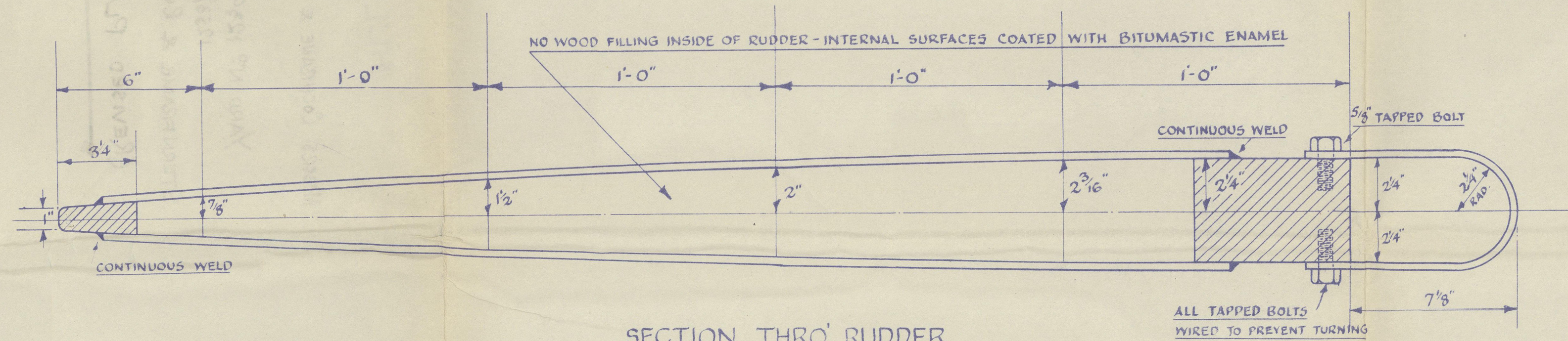
HARD OVER ANGLE 45°
PALMS TO CLEAR EACH
OTHER 45 SHOWN



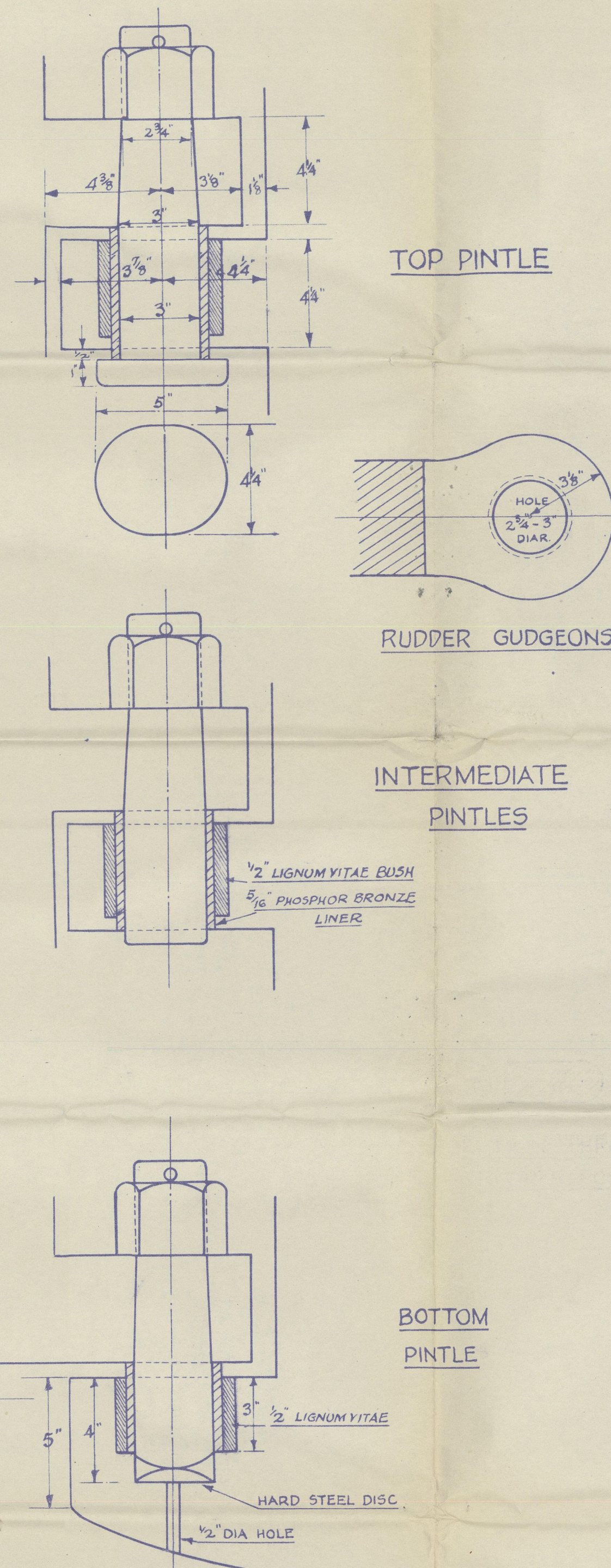
DETAIL OF FILLET PIECES
ON FORE END OF RUDDER



DETAIL OF CONNECTION OF RUDDER-PLATES TO STAYS



SECTION THRO' RUDDER

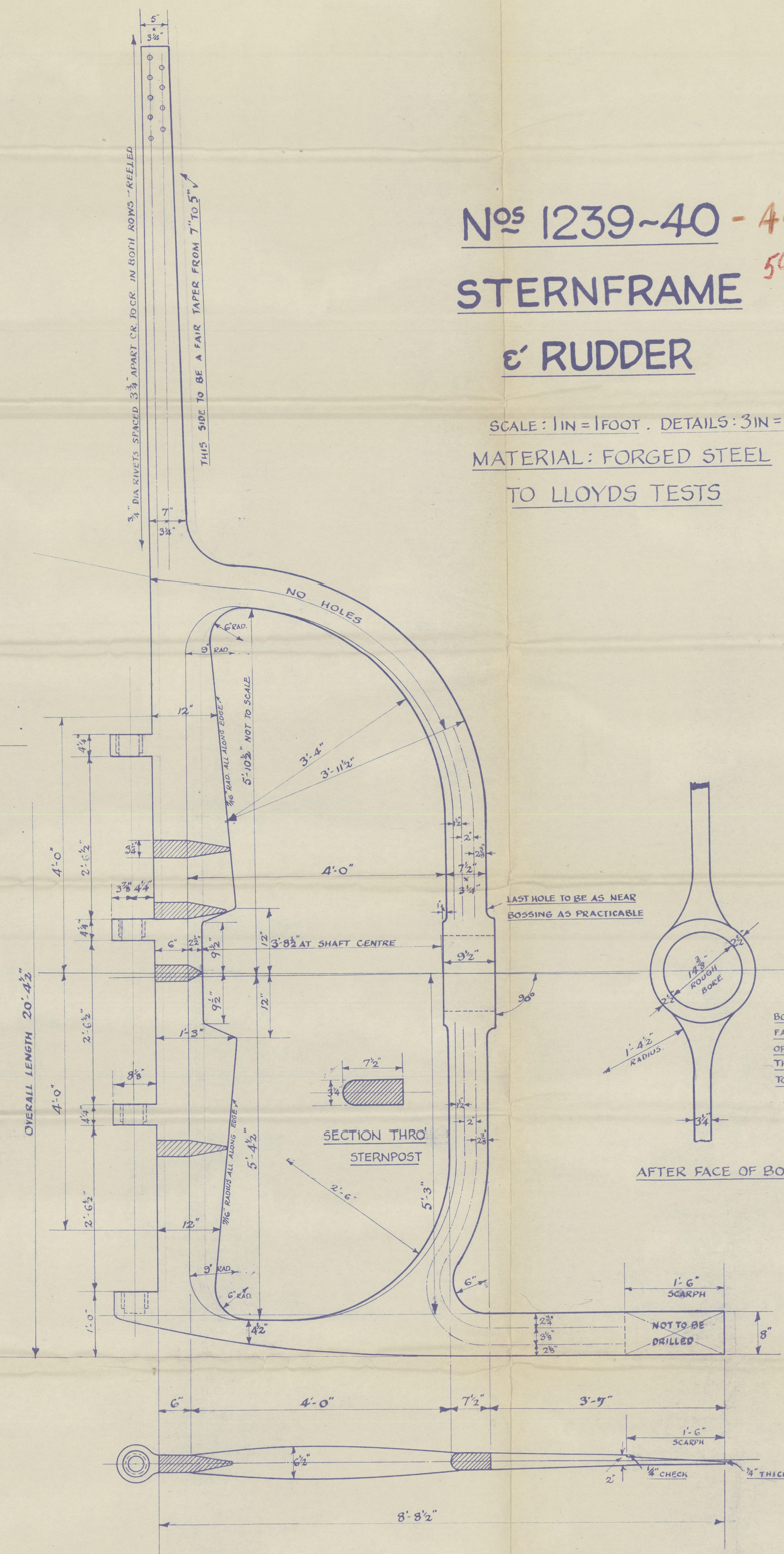


TOP PINTLE

RUDDER GUDGEONS

INTERMEDIATE
PINTLES

BOTTOM
PINTLE



N^{os} 1239-40 - 45-46-53-54.

STERNFRAME

ε' RUDDER

SCALE: 1 IN = 1 FOOT. DETAILS: 3 IN = 1 FOOT

MATERIAL: FORGED STEEL
TO LLOYDS TESTS

BOSS SIDES TO BE TAPERED
TO 5/8" THICKER EACH SIDE
AT FORE END

BORE OF BOSS & FORE & AFTER
FACES OF BOSS TO BE SQUARE
OFF SHAFT CENTRE LINE.
THE SHAFT DROOPS FROM AFT
TO FORD 1" IN 10'-2 1/4"

AFTER FACE OF BOSS

~~NOT TO BE~~

SCAR

CHECK

002

24-44

HULL

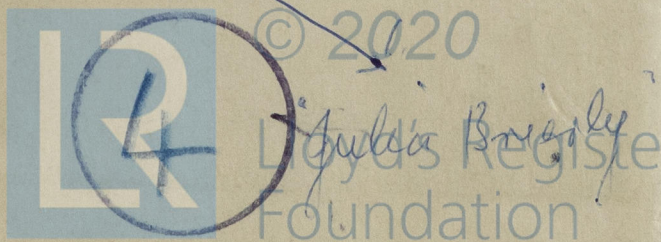
MESSRS COCHRANE & SONS LTD.

YARD NO 1239/40/45/46
1253/54.59/60/65/6

STERNFRAME & RUDDER

(REVISED PLAN).

" BONITO "	Report No. 51601.
" WHITING "	" 51638.
" GRAYLING "	" 51681.
" CORNCRAKE "	" 51861.
" MULLET "	" 51820.
" REDSHANK "	" 51891.
" BREAM "	" 51964.
" HERRING "	" 51993.
" GRILSE "	" 52090.
" POLLOCK "	" 52104.



002897-002906-0169