

# Lloyd's Register of Shipping.

## SURVEYS FOR FREEBOARD.

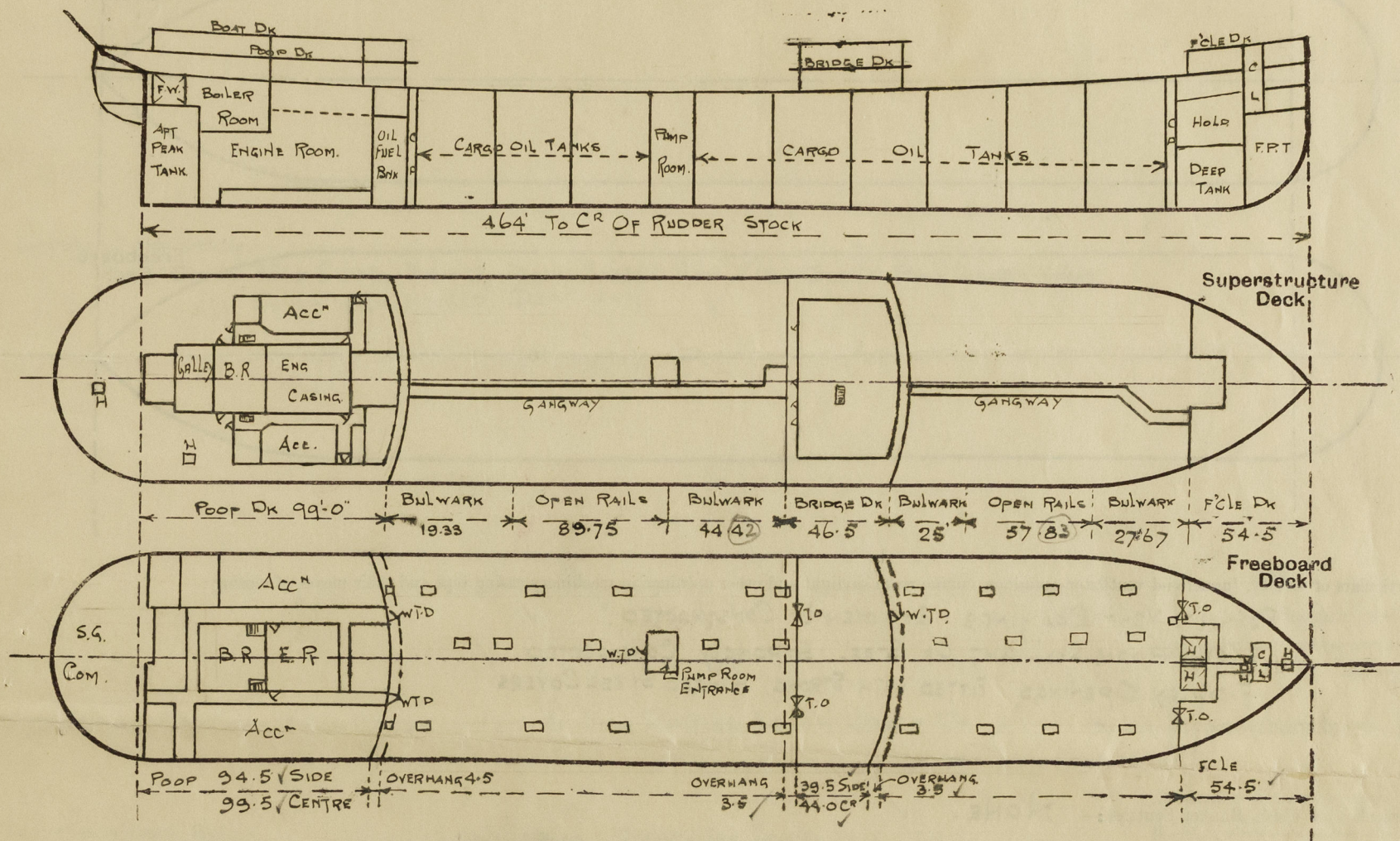
### (CONDITIONS OF ASSIGNMENT.)

2 JUN 1948

GRK REPORT N° 23691.

Ship's Name **BRITISH ADVOCATE**Port of Survey **GREENOCK.**Official Number ✓ **181956**Surveyor's Signature *Kenneth Ingho.*Nationality and Port of Registry **LONDON - BRITISH.**Date of Survey **WHILE BUILDING 1948.**

Disposition and dimensions of superstructures, trunks, deckhouses and machinery casings to be inserted in the diagrams and tabular statement: -



Particulars of Superstructures, Trunks, Casings, Deckhouses.

	Coaming	Plating	Stiffeners	Spacing	End Attachments of Stiffeners	Size of Openings	Height of Sills	Height of Casings
Poop Bulkhead ...	.46 ✓		10 x 3 1/2 x .46 BA ✓	33	WELDED ✓	2 @ 5' x 3'	18" ✓	8'-0" ✓
Raised Quarter Deck Bulkhead ...	.44 ✓		10 x 3 1/2 x .40 BA ✓	30"				
Bridge, After Bulkhead ...	.34 ✓		4 x 3 x .36 OA ✓	33"	BOLTS AT TOP ONLY	2 @ 4'-1" x 3'-1"	18" ✓	8'-0" ✓
Bridge, Forward Bulkhead ...	.30 ✓		4 x 3 x .32 OA ✓	30"				
Forecastle Bulkhead ...	.46 ✓		10 x 3 1/2 x .46 BA ✓	33"	WELDED ✓	1 @ 5' x 3'	18" ✓	8'-0" ✓
Trunk, Aft ...	.44 ✓		10 x 3 1/2 x .40 BA ✓	30"				
Trunk, Forward ...	.34 ✓		4 x 3 x .36 OA ✓	33"	NONE	1 @ 4'-3" x 2'-3"	18" ✓	8'-0" ✓
Exposed Machinery Casings on Freeboard or Raised Quarter Decks ...	.30 ✓		4 x 3 x .32 OA ✓	27"				
Exposed Machinery Casings on Superstructure Decks ...								
Machinery Casings within Superstructure not fitted with Class I Closing Appliances ...								
Pump Room Entrance ...								
Deckhouses on Flush Deck Ships ...								

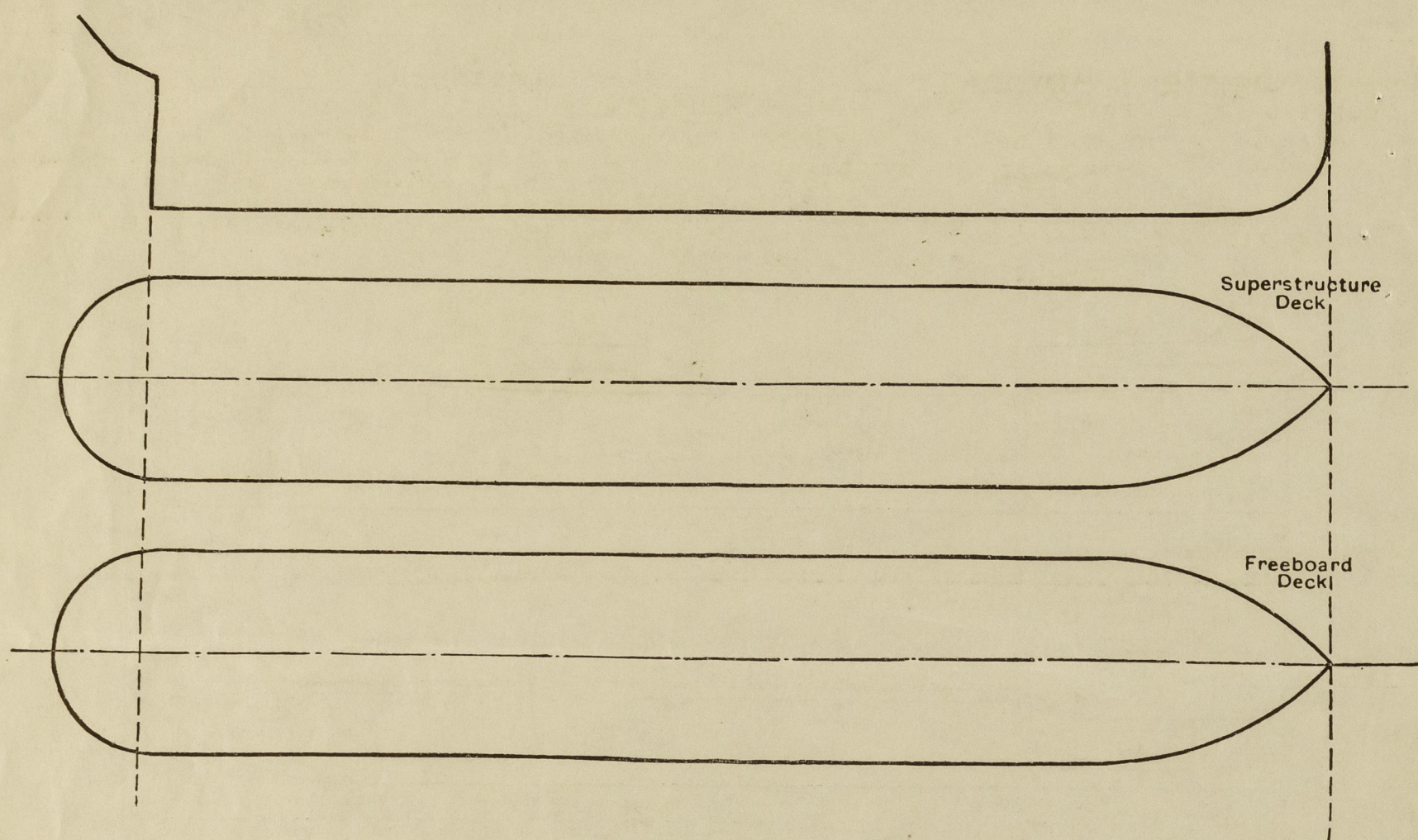
Particulars of Closing Appliances (state if capable of being manipulated from both sides).

Poop Bulkhead ...	TWO. STEEL WATERTIGHT DOORS CAPABLE OF BEING MANIPULATED FROM BOTH SIDES.	✓
Raised Quarter Deck Bulkhead ...		
Bridge, After Bulkhead ...	2 TONNAGE OPENINGS. CLOSED BY STEEL PLATES SECURED BY HOOK BOLTS NOT PASSING THRO' BULKHEAD. BOLTS SPACED LESS THAN 15" APART.	✓
Bridge, Forward Bulkhead ...	ONE STEEL WATERTIGHT DOOR CAPABLE OF BEING MANIPULATED FROM BOTH SIDES.	✓
Forecastle Bulkhead ...	ONE STEEL W.T. DOOR CAPABLE OF BEING MANIPULATED FROM BOTH SIDES.	✓
Exposed Machinery Casings on Freeboard or Raised Quarter Decks ...	2 TONNAGE OPENINGS CLOSED BY STEEL PLATES SECURED BY HOOK BOLTS NOT PASSING THRO' BULKHEAD. BOLTS SPACED LESS THAN 15" APART.	✓
Exposed Machinery Casings on Superstructure Decks ...	Hinged steel doors 0'3" x 5'0"	
Machinery Casings within Superstructure not fitted with Class I Closing Appliances ...		
Deckhouses on Flush Deck Ships ...	1 HINGED STEEL WATERTIGHT DOOR. MANIPULATED FROM BOTH SIDES.	✓



# PARTICULARS OF PROTECTION TO OPENINGS, ETC.

The following diagrams should be used to indicate the positions of cargo and coaling hatchways, gangway, cargo and coaling ports, ventilators, companionways, etc., which would affect the seaworthiness of the ship :-



Particulars of fiddle, funnel and ventilator coamings, engine room skylight and other openings in machinery casing tops and their means of closing :-

FUNNEL & VENT COAMINGS EFFICIENTLY CONSTRUCTED ✓  
ENGINE ROOM SKYLIGHT OF STEEL STRONGLY CONSTRUCTED ✓  
FIDDLEY OPENINGS. FITTED WITH STRONG, HINGED STEEL COVERS

Particulars of Flush Bunker Scuttles :- NONE. ✓

Particulars of Companionways :- ENTRANCE TO PUMP ROOM. FROM STEEL DECKHOUSE FITTED WITH HINGED STEEL WATERTIGHT DOOR, MANIPULATED FROM BOTH SIDES. DOOR. 4'-3" x 2'-3" HAVING 24" COAMING. FOR SCANTLING OF DECKHOUSE SEE PREVIOUS PAGE ✓

Particulars of Ventilators in exposed positions on freeboard and superstructure decks :-

**FORECASTLE DK**  
2-6" DIA. COWL VENTS. COAMINGS 36" x 30" TO FORESTOREY ✓  
2-8" " " " " 36" x 30" " FORESTOREY ✓  
2-12" " " " " 36" x 34" " FORE HOLD ✓  
2-12" " " " " 36" x 34" " FORE TWIN DKS ✓  
1-12" " " " " 36" x 34" " " PUMP ROOM.

**POOP DECK**  
2-10" DIA. COWL VENTS. COAMINGS 30" x 32" TO POOP ✓  
2-6" " " " " 30" x 30" " STEER GEAR ✓  
2-6" " " " " 30" x 30" " ROPE STORE ✓  
1-11" " " " " 30" x 32" " REFRIG. SPACE ✓  
11-8x4 SWAN NECK VENTS 30" HIGH " POOP.

**UPPER DK**  
2-24" DIA COWL VENTS COAMINGS 13'-0" x 40" TO PUMP ROOM. EFFICIENTLY SUPPORTED ✓

ALL VENTILATORS CONSTRUCTED IN ACCORDANCE WITH THE RULES & CLOSED BY WOOD PLUGS & CANVAS COVERS ✓

Particulars of Air Pipes in exposed positions on freeboard, raised quarter, or superstructure decks :-

**FORECASTLE DECK**  
2-6" DIA AIR PIPES 36" HIGH TO FORE PEAK TANK ✓  
2-4" " " " 36" " " DEEP TANK ✓

**UPPER DECK**  
2-4" DIA AIR PIPES 11'-0" HIGH TO FORE COFFERDAM. EFFICIENTLY SUPPORTED ✓  
2-4" " " " 11'-0" " " O.F. BUNKER. SUPPORTED ✓  
2-4" " " " 11'-0" " " AFT COFFERDAM. SUPPORTED ✓  
2-4" " " " 11'-0" " " O.F. SETTLING TANKS. SUPPORTED ✓

AIR PIPES CLOSED BY WOOD PLUGS OR CANVAS COVERS. OR AUTOMATIC STEEL COVERS. ✓

**POOP DECK**  
2-4" DIA. A.P. 36" HIGH TO O.F. DB TANK ✓  
2-4" " " 36" " " LUB. OIL TANK ✓  
2-2 1/2" " " 18" " " DB COFFERDAM ✓  
2-4" " " 18" " " FEED TANKS ✓  
2-6" " " 30" " " A.P. TANK ✓  
1-3" " " 18" " " RUDDER TRUNK ✓  
1-2 1/2" " " 18" " " STERN COMP. ✓  
2-3" " " 18" " " F.W. TANKS ✓

Particulars of Gangway Cargo and Coaling Ports :-

British Advocate.

Particulars of Scuppers and Sanitary Discharge Pipes :-

SCUPPERS FROM UPPER DK 6x2" CUT THROUGH STRINGER BAR. ✓  
" " BRIDGE FOLE SPACES. DRAINS ON TO UPPER DK ✓  
" " POOP SPACE. LED OVERBOARD ABOVE L.W.L. & FITTED WITH BRASS STORM VALVES (SCUPPERS) IN ALLEYWAY & REFRIG CHAMBERS FITTED WITH NON DETACHABLE SCREW PLUGS. ✓  
SANITARY DISCHARGES FROM POOP & BRIDGE HOUSES FROM POOP SPACE LED OVERBOARD ABOVE L.W.L. & FITTED WITH BRASS STORM VALVES. ✓

Particulars of Side Scuttles :-

10" DIA IN FOLE SIDES, BRIDGE, FRONT SIDES & END. 12" DIA IN POOP SIDES & FRONT. ALL FITTED WITH HINGED DEADLIGHTS. ✓

Vertical distance of Sill of lowest Side Scuttle above top of keel. NO SIDE SCUTTLES BELOW UPPER DK ✓

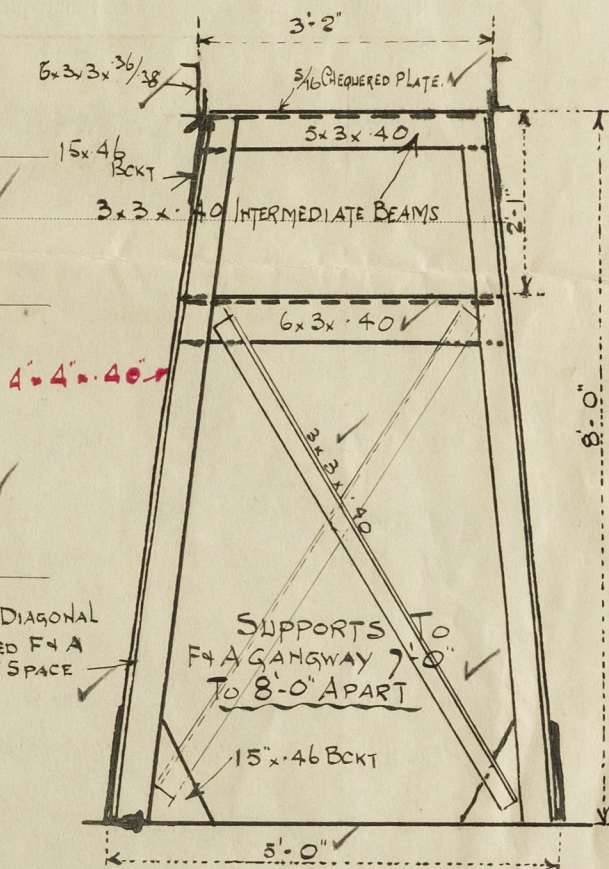
Particulars of Guard Rails :-

UPPER DK. 4'-0" HIGH WITH STOPS. STANCHIONS SPACED 4'-6" - 5'-0" ✓  
POOP DK. 3'-9" " " " " " " " " ✓  
FOLE DK. 3'-6" " " " " " " " " ✓  
N.A. GANGWAY 3'-9" " " 2 " " " " " ✓  
BRIDGE DK. ENDS 3'-7 1/2" " " 3 " " " " " ✓  
SIDES 3'-6" " " " " " " " " ✓  
BULWARKS OF SUBSTANTIAL CONSTRUCTION ✓

Particulars of Gangways, Lifelines, etc. :-

GANGWAY BETWEEN POOP BRIDGE AND BRIDGE FOLE. SEE SKETCH. ✓

3 1/2 x 3 1/2 x 40 DIAGONAL BRACING FITTED F.N.A. IN EVERY 2ND SPACE



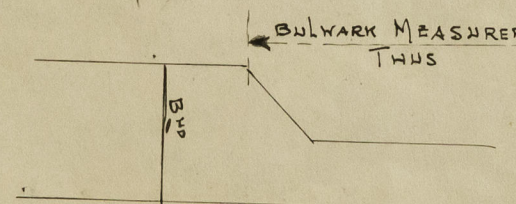
## Particulars of Freeing Arrangements.

	Length of Bulwark	Height of Bulwark	Size of Freeing Ports	Number each side	Area each side	Rule area each side
After Well ...	AFT 19.33 FORD 44.42	3-11 1/4	36" x 9"	1 3	8.52 sq ft + open rails for half length	open rails for half length.
Forward Well ...	AFT 25.00 FORD 27.62	3-11 1/4	" " "	2 1	6.39 sq ft + open rails for half length.	half length.

State position of each freeing port ... After Well :- 9' For Op Poop Front 4', 23' & 38' Aft Of BRIDGE END  
(F. and A. position and height above deck edge) Forward Well :- 3' 4' 19' For Op BRIDGE FRONT 19' AFT OF FOLE (HEIGHT 14" ABOVE DK) ✓

State whether the freeing ports are fitted with shutters, bars, or rails, and give particulars of such :- NONE ✓

Additional area where sheer is less than standard.





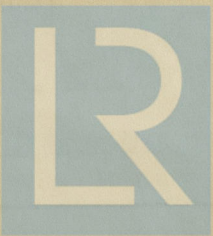
PARTICULARS OF PROTECTION TO OPENINGS, ETC.

HATCHWAYS ON FREEBOARD AND SUPERSTRUCTURE DECKS.												
Description of Hatchway	...	...	HATCH TO FORE HOLD	To CARGO OIL TANKS 27 OFF	F.P STORE 3'-0" x 3'-0"	FOR TWIN DECK 2'-6" x 2'-0"	FOR PUMP ROOM 3'-0" x 3'-0"	O.F BUNKERS 2 OFF 3'-0" x 3'-0"	MANHOLES COFFERWAY SETTLING 100 OFF TANK 23 x 18"	MANHOLE To F.CLE 23 x 18"	HATCH TO SEMN COMP <sup>T</sup> 2'-6" x 2'-6"	HATCH TO ROOF SPACE 2'-9" x 2'-9"
Dimensions of Hatchway	...	...	6'-9" x 10'	6'-0" x 4'-0"	3'-0" x 3'-0"	2'-6" x 2'-0"	3'-0" x 3'-0"	3'-0" x 3'-0"	23 x 18"	23 x 18"	2'-6" x 2'-6"	2'-9" x 2'-9"
COAMINGS	{	Height above Deck ...	30" ✓	12 ✓	9 x 3 x 40	3 x 3 x 40	30" ✓	30" ✓	23 x 18"	9 x 3 x 40	30" ✓	21" ✓
	{	Thickness ...	.44 ✓	.50 ✓	BA.	BA.	.40 ✓	.40 ✓	24 x 18"	BA ✓	.40 ✓	.40 ✓
	{	Sides ...							12 x 3 1/2 x 50 GA WELDED TO EACH TO DECK.			
	{	Ends ...										
	{	Stiffeners ...										
	{	Brackets, Stays ...										
HATCH BEAMS	{	Number ...										
	{	Spacing ...										
	{	Scantling and Sketch ...										
	{	Bearing Surface ...										
FORE AND AFTERS	{	Number ...	1 ✓									
	{	Spacing ...	5'-0" ✓									
	{	Unsupported Lengths ...	6'-9" ✓									
	{	Scantling* and Sketch ...	2 x 2 x 45 6 x 3 x 44 → 1 1/2 12 x 60									
	{	Bearing Surface ...	3 1/2									
HATCH COVERS	{	Material ...	ST. HINGED	ST. HINGED	STEEL HINGED	STEEL HINGED	STEEL HINGED	STEEL HINGED	STEEL PLATE	STEEL HINGED	STEEL HINGED	WOOD
	{	Thickness ...	W.T COVER	O.T COVERS	W.T COVER	W.T COVER	W.T COVER	O.T COVERS	COVERS	W.T COVER	W.T COVER	2 1/2 ✓
	{	How fitted (manuf.) ...	IN 2 PARTS	.64 ✓	.50 ✓	.50 ✓	.50 ✓	.50 ✓	46 THICK ✓	.46 ✓	.50 ✓	-
	{	Bearing Surface ...	.60 THICK	THICK	THICK	THICK	THICK	THICK	THICK	THICK	THICK	2 1/2 ✓
Spacing of Cleats	...	...	←	←	←	←	←	←	←	←	←	←
Number of Tarpaulins	...	...	13 1/2	14-16	17-18	15-18	18	17-20	BOLTS 3 1/2" ✓	TOGGLES 17" ✓	TOGGLES 2 PER SIDE ✓	24 ✓
SPACING OF TOGGLES			13 1/2	14-16	17-18	15-18	18	17-20	PITCH			2 ✓
*Are wood fore and afters steel shod at all bearing surfaces? ✓												
Are battens and wedges efficient and in good condition? YES ✓												
Are tarpaulins in good condition and in accordance with rule requirements? YES ✓												
Are lashings provided in accordance with rule requirements? ✓												

Particulars of any special features:— BUTTERWORTH TANK CLEANING SYSTEM- 1 1/2" DIA OPENING IN UPPER DK TO EACH CARGO OIL TANK CLOSED BY 3/4" STEEL PLATE COVER SECURED BY 3/4" BOLTS SPACED 4 3/4" APART.

Endorsement at first survey and at surveys for renewal of Certificate:—

The fittings and appliances are in accordance with the particulars shown on this form (or as now modified) and are in good condition.



© 2020

Lloyd's Register  
Foundation