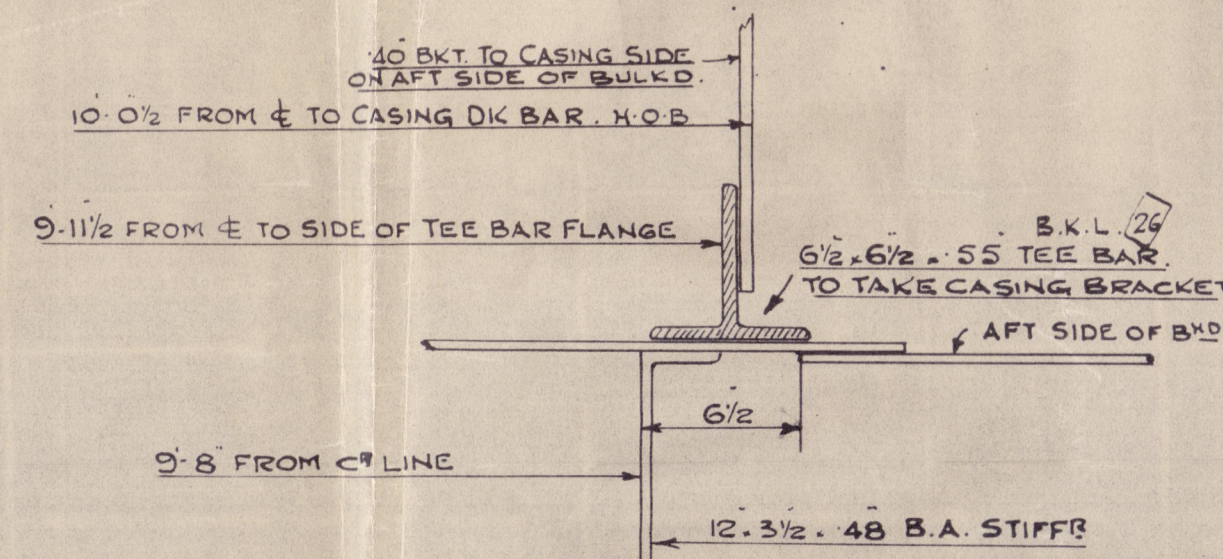


OIL FUEL BUNKER.  
O. T. BULK<sup>DS</sup> NOS 35 & 39

SCALE 1/2" = 1 FT

Nos 277 - 8



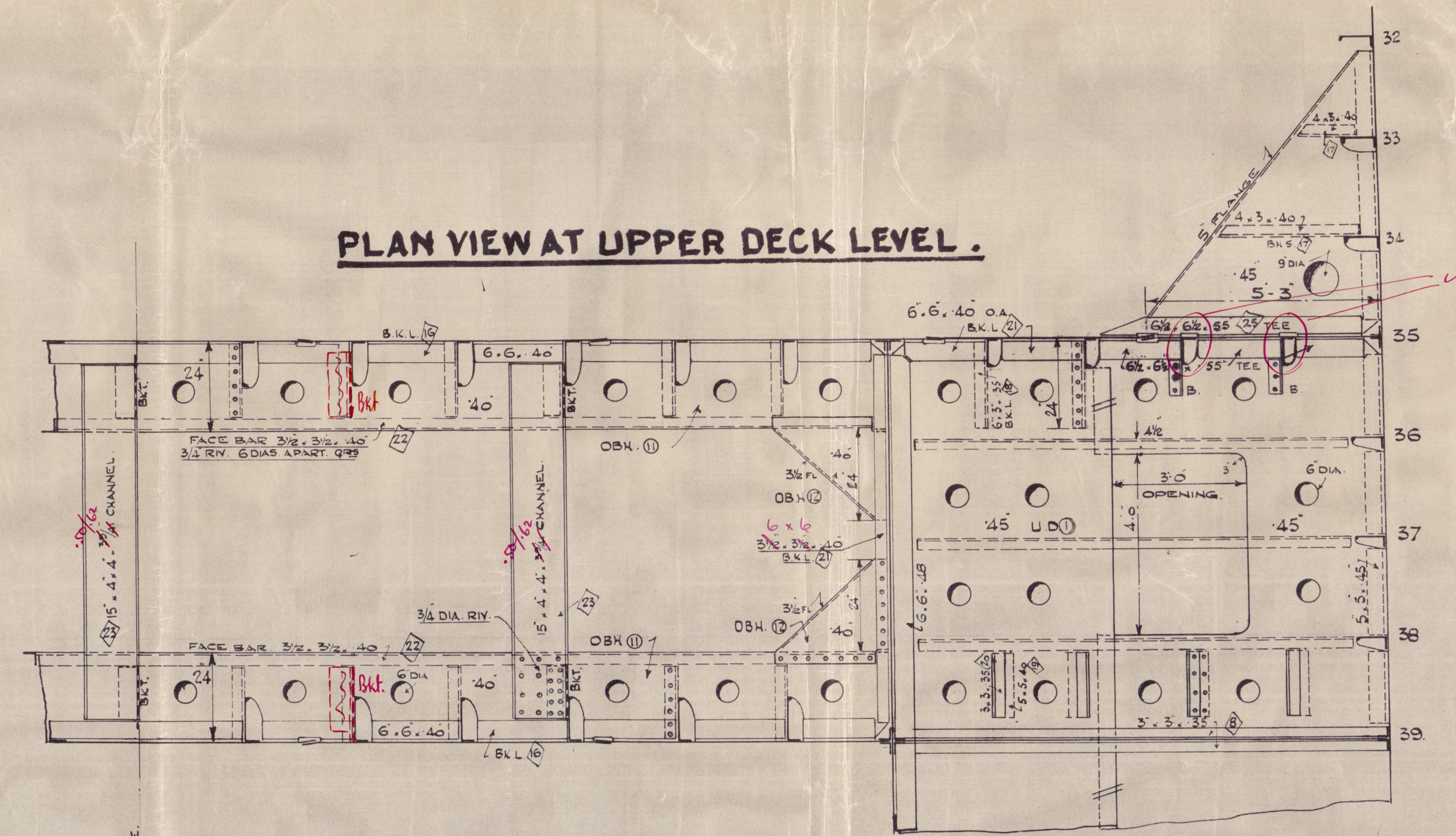
RIVETING.

PLATE LANDINGS. D.R.  $3\frac{1}{4}$  IN.  $3\frac{1}{2}$  DIAS. APART CRS.

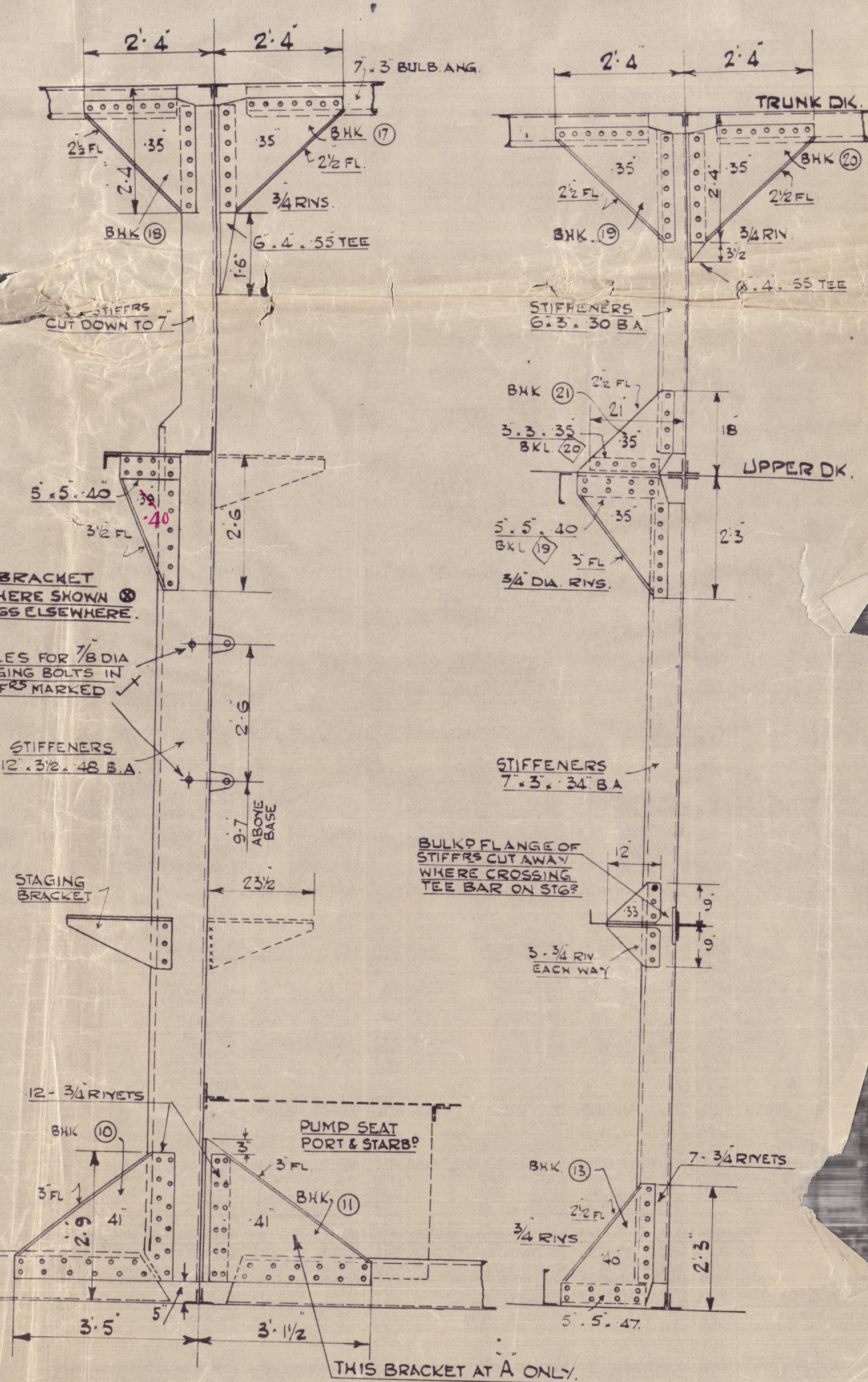
BOUNDARY ANGLES.	3/4 RIV.	5 DIAS.	-Do-
------------------	----------	---------	------

STIFFENERS.                      3/4 RIV.    6 DIAS.    - DO-

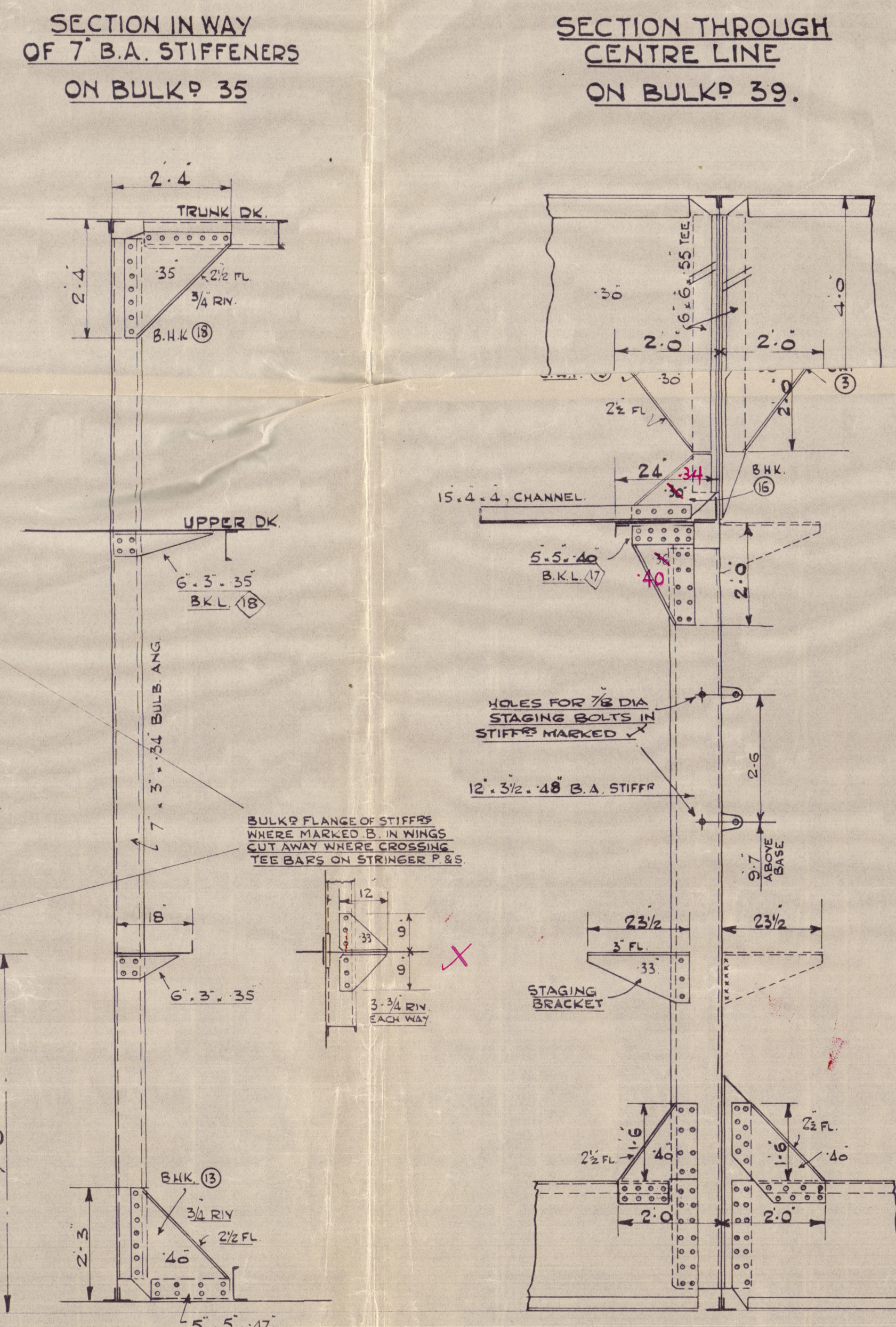
\_\_\_\_\_



BULKHEAD 39 - LOOKING AFT.

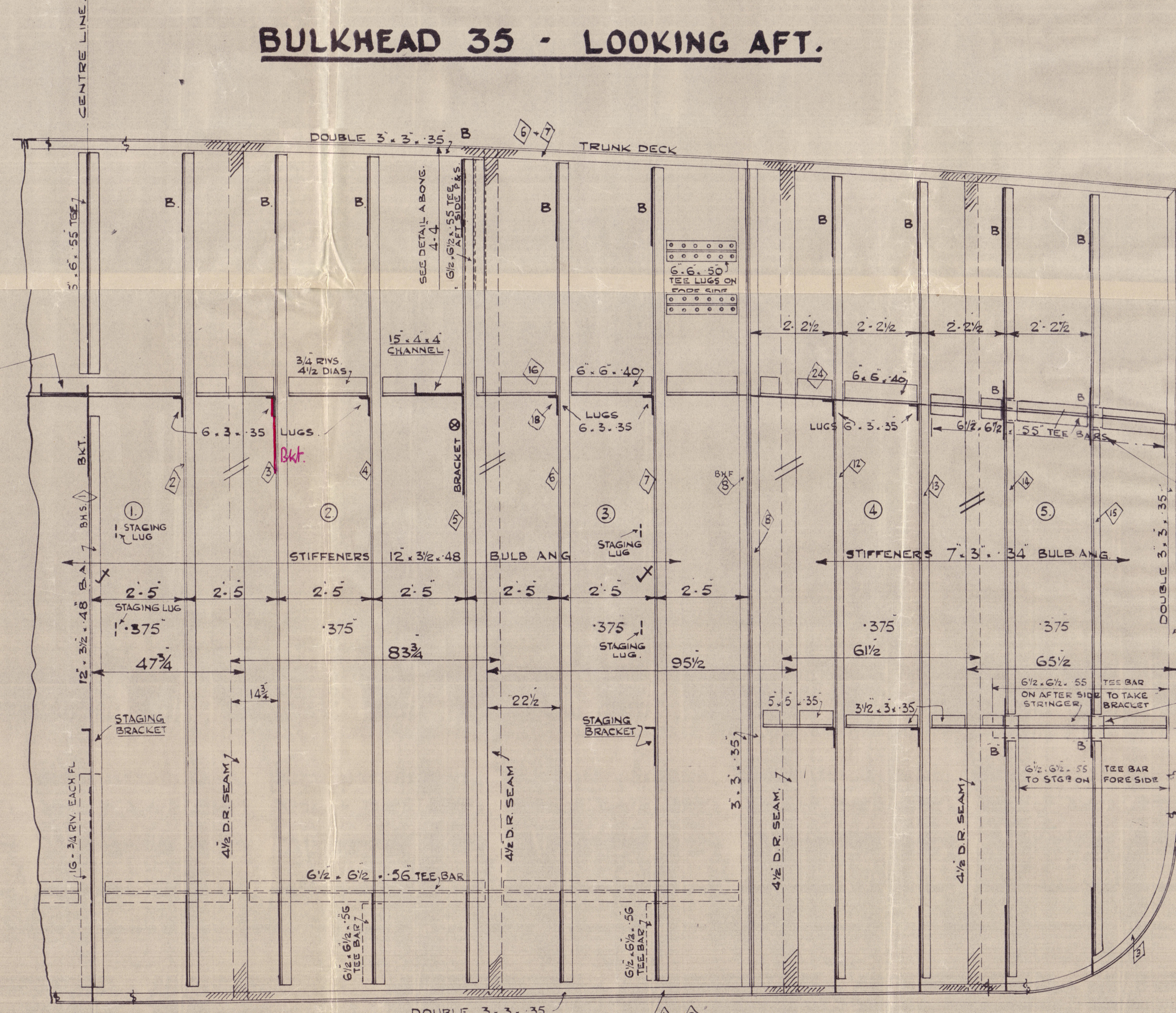


SECTION IN WAY OF  
6" & 7" B.A. STIFFENERS.  
ON BULK # 39.



SECTION THROUGH  
CENTRE LINE  
ON BULK# 39.

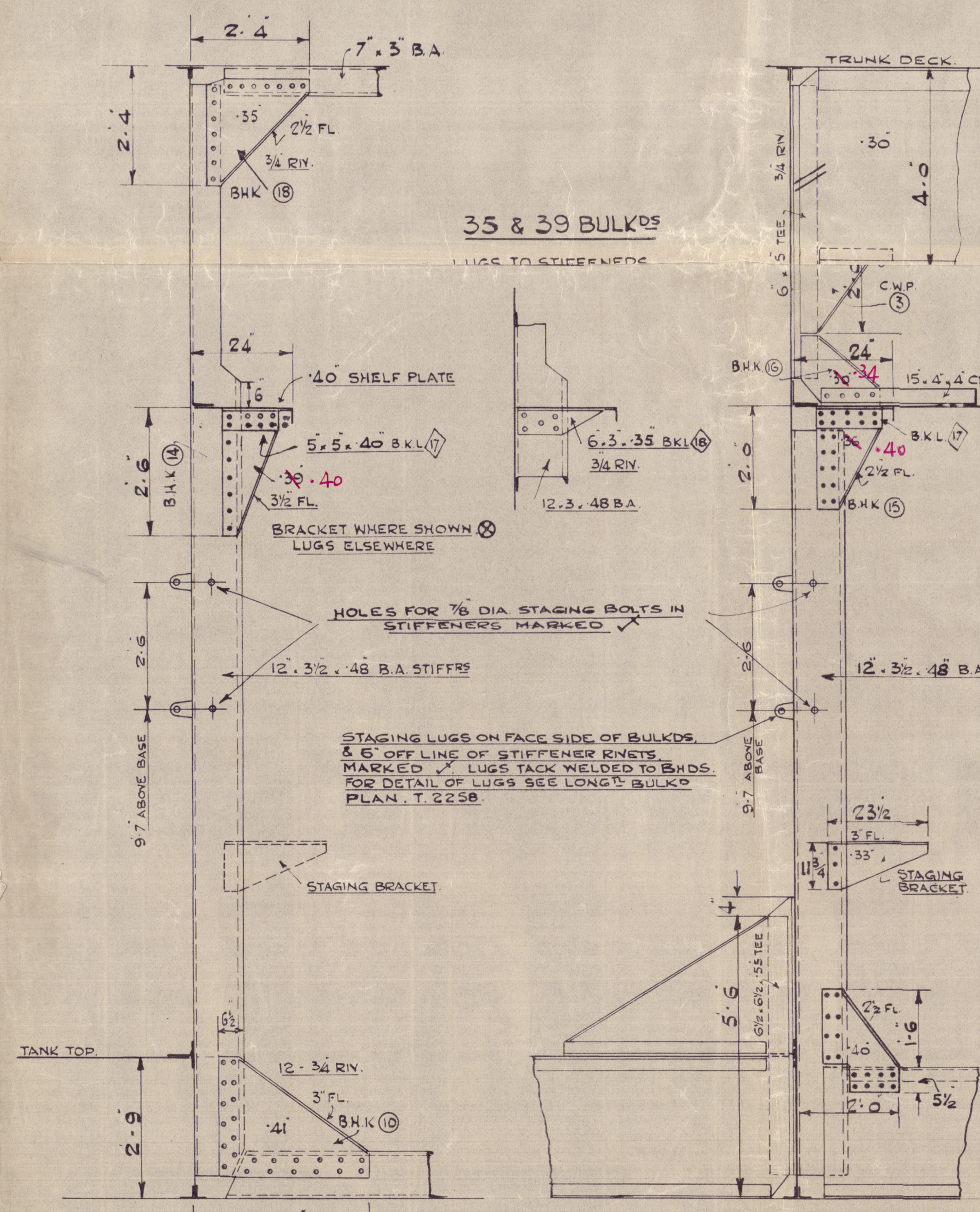
SECTION IN WAY  
OF 7" B.A. STIFFENERS  
ON BULKHEAD 35



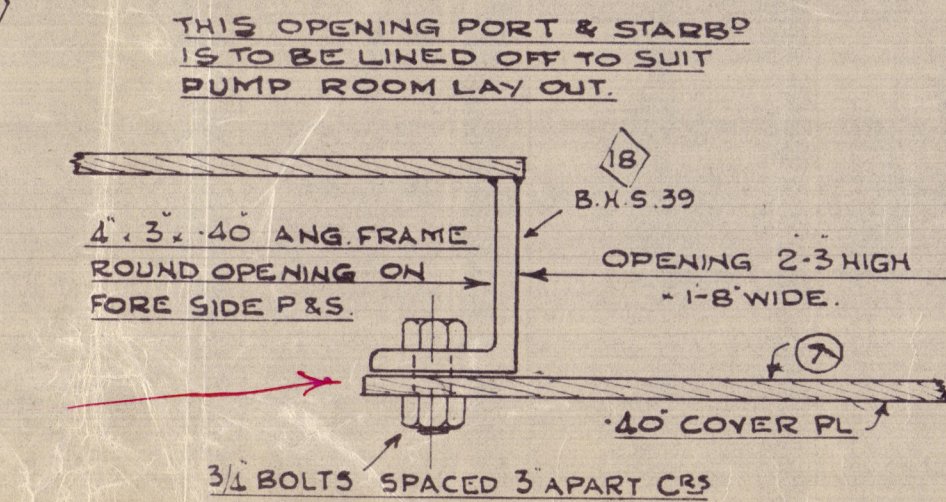
**BULKHEAD 35 - LOOKING AFT.**

SECTION THROUGH  
CENTRE LINE.  
ON BULK# 35.

SECTION IN WAY  
OF 12" B. A. STIFFENERS.  
ON BULKH 35



Packed to Surveyor's  
Satisfaction.



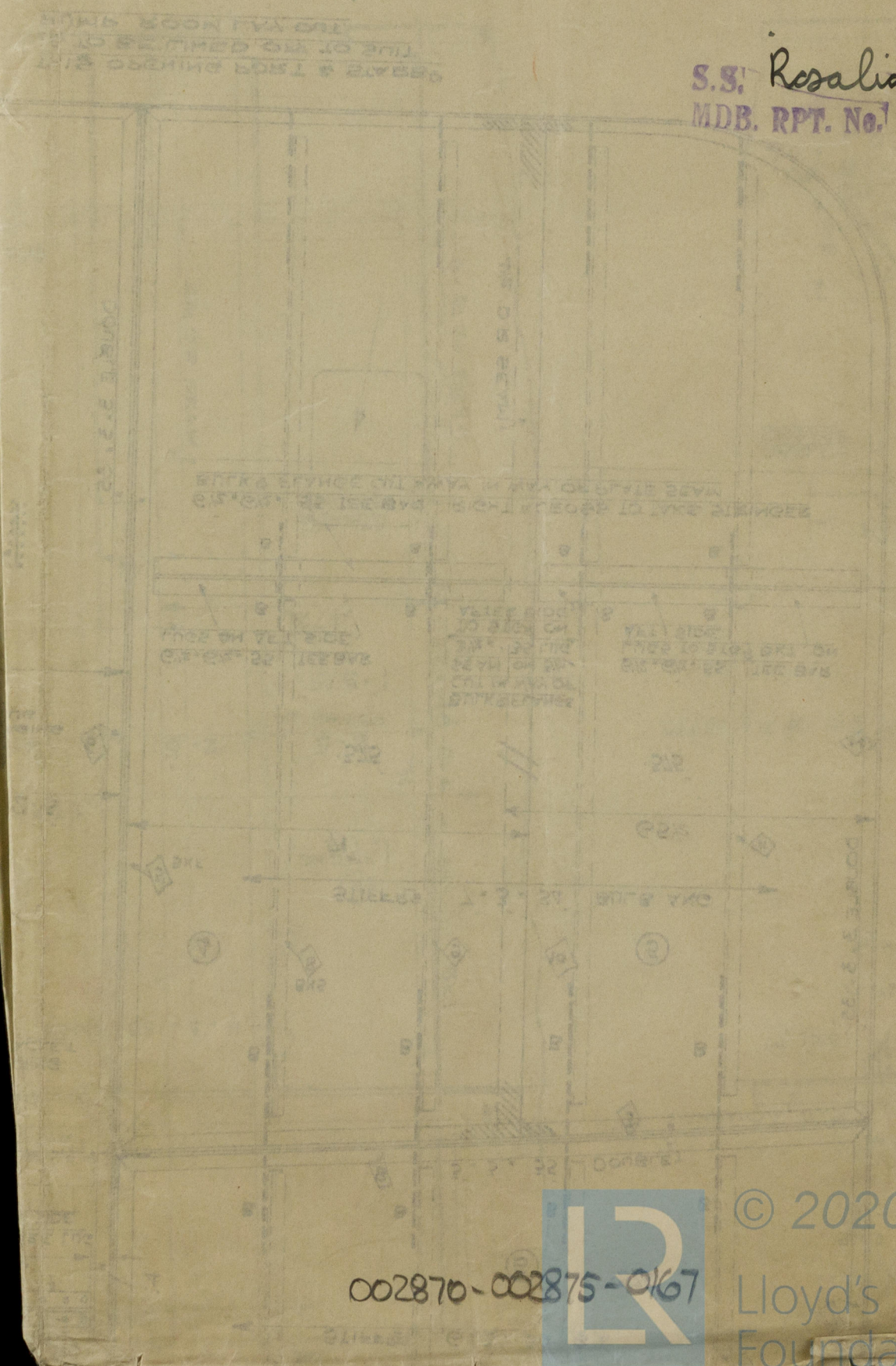
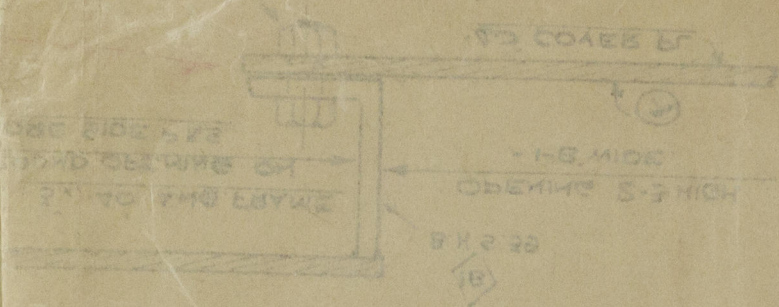


FURNESS S.B.C.  
Nº 277-278  
OIL FUEL BUNKER

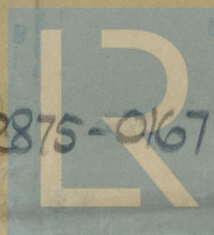
(16)

S.S. "Rebecca"  
 MDB. RPT. No. 16275

S.S. "Rosalia"  
 MDB. RPT. No. 16303



002870-002875-0167



© 2020

Lloyd's Register  
 Foundation