

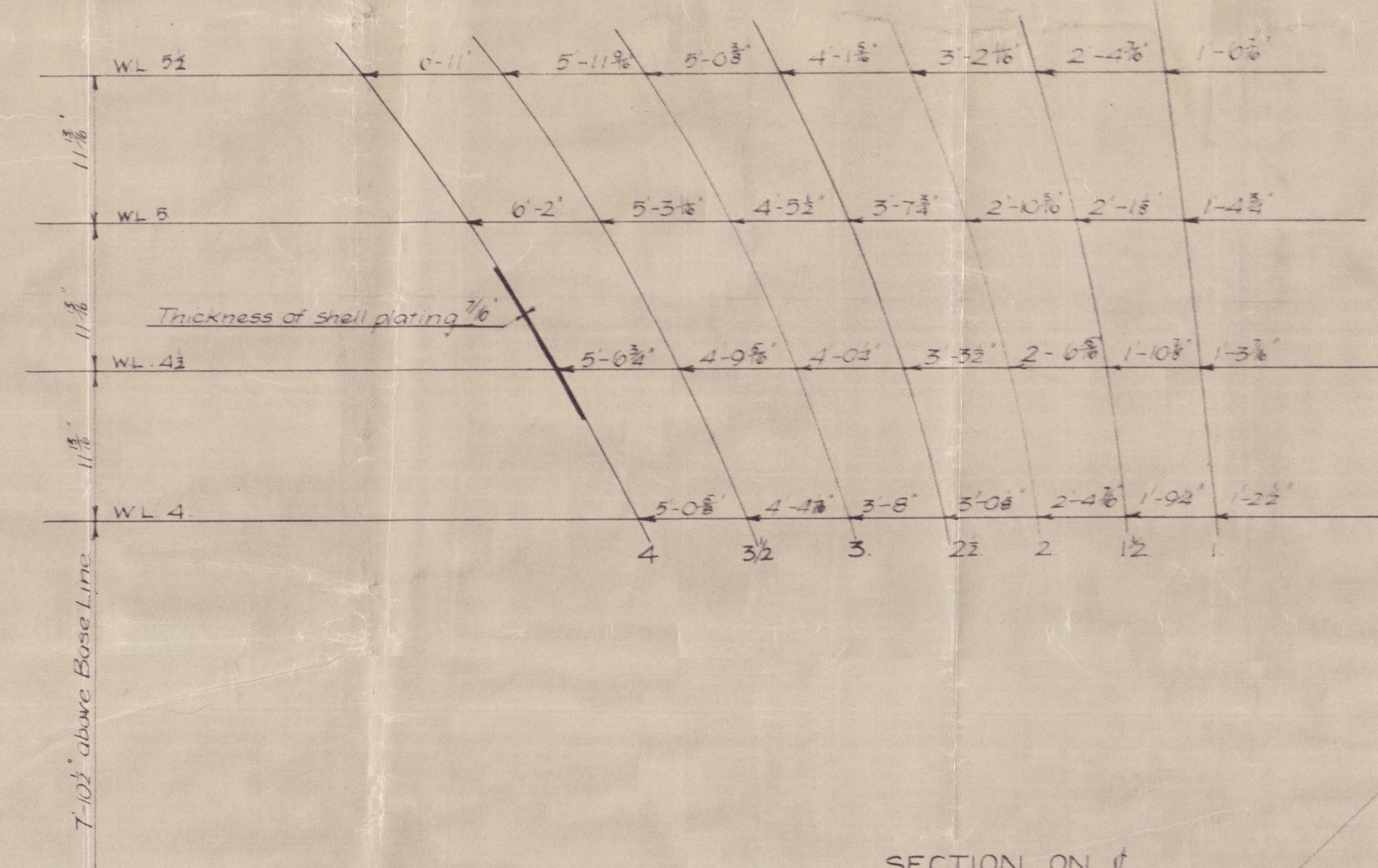
NOTE  
 5.3.37  
 Shaft bracket - Forged steel  
 Boss - Cast steel  
 Lloyds' Certificate

# T.S.S. N<sup>os</sup>. 277 & 8. PROPELLER BRACKETS.

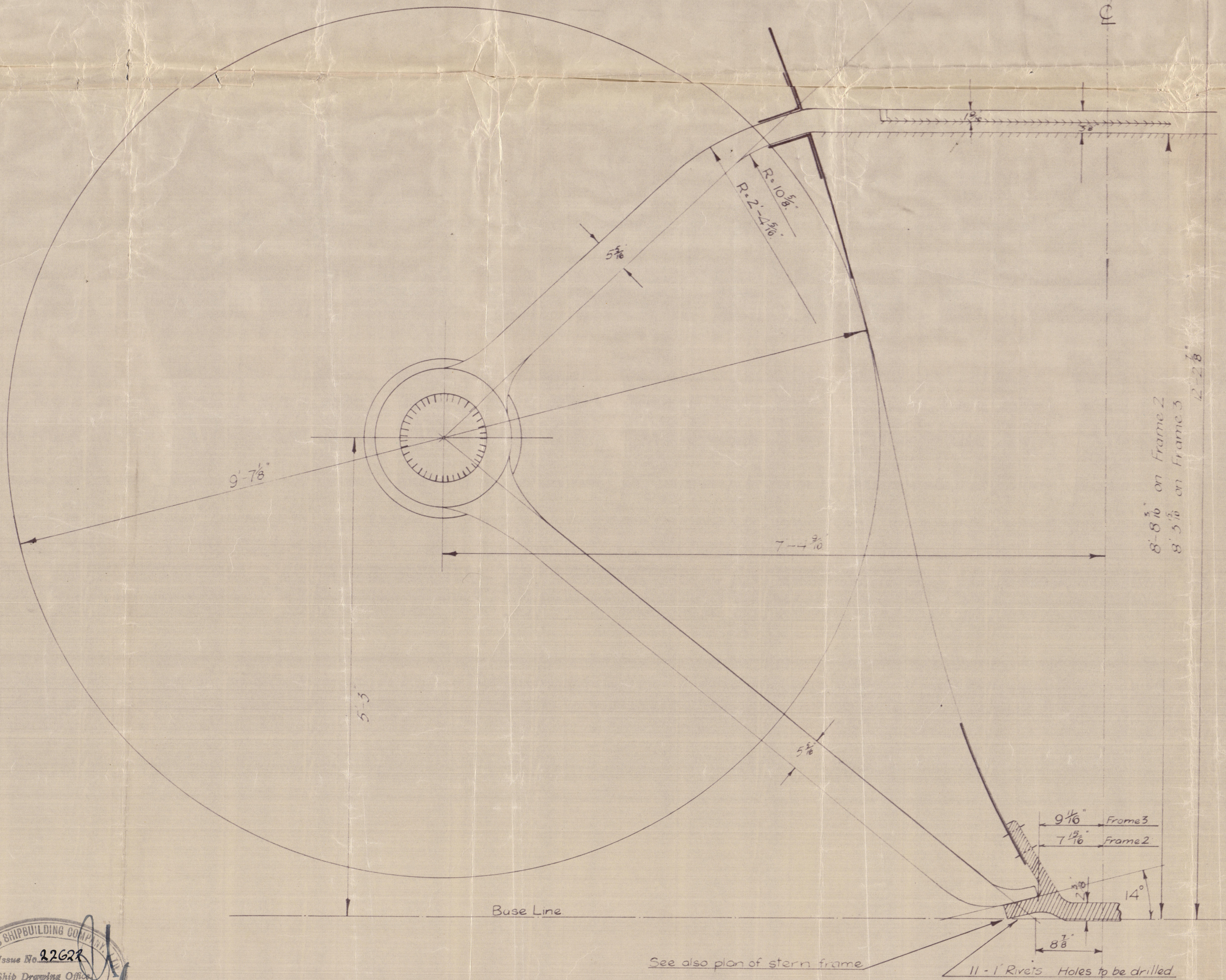
Scale 1:10

## SHAPE OF FRAMES

All dimensions are given from the centre of ship to outside of frames



## SECTION ON $\perp$ SHAFT BRACKET

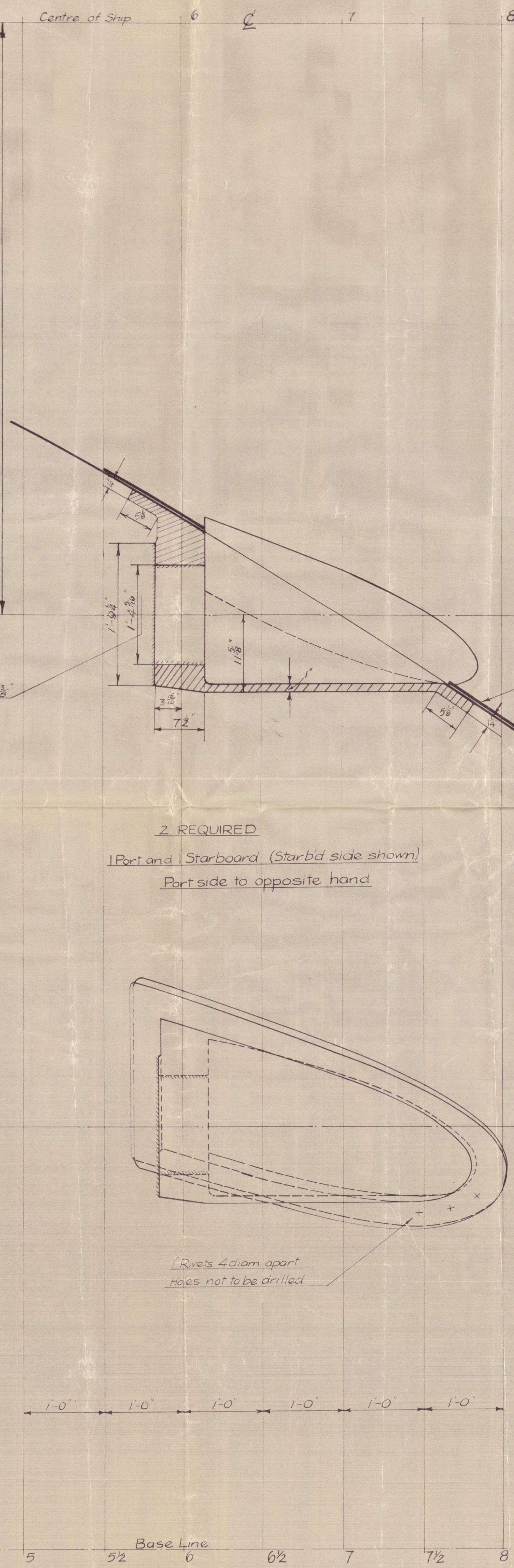
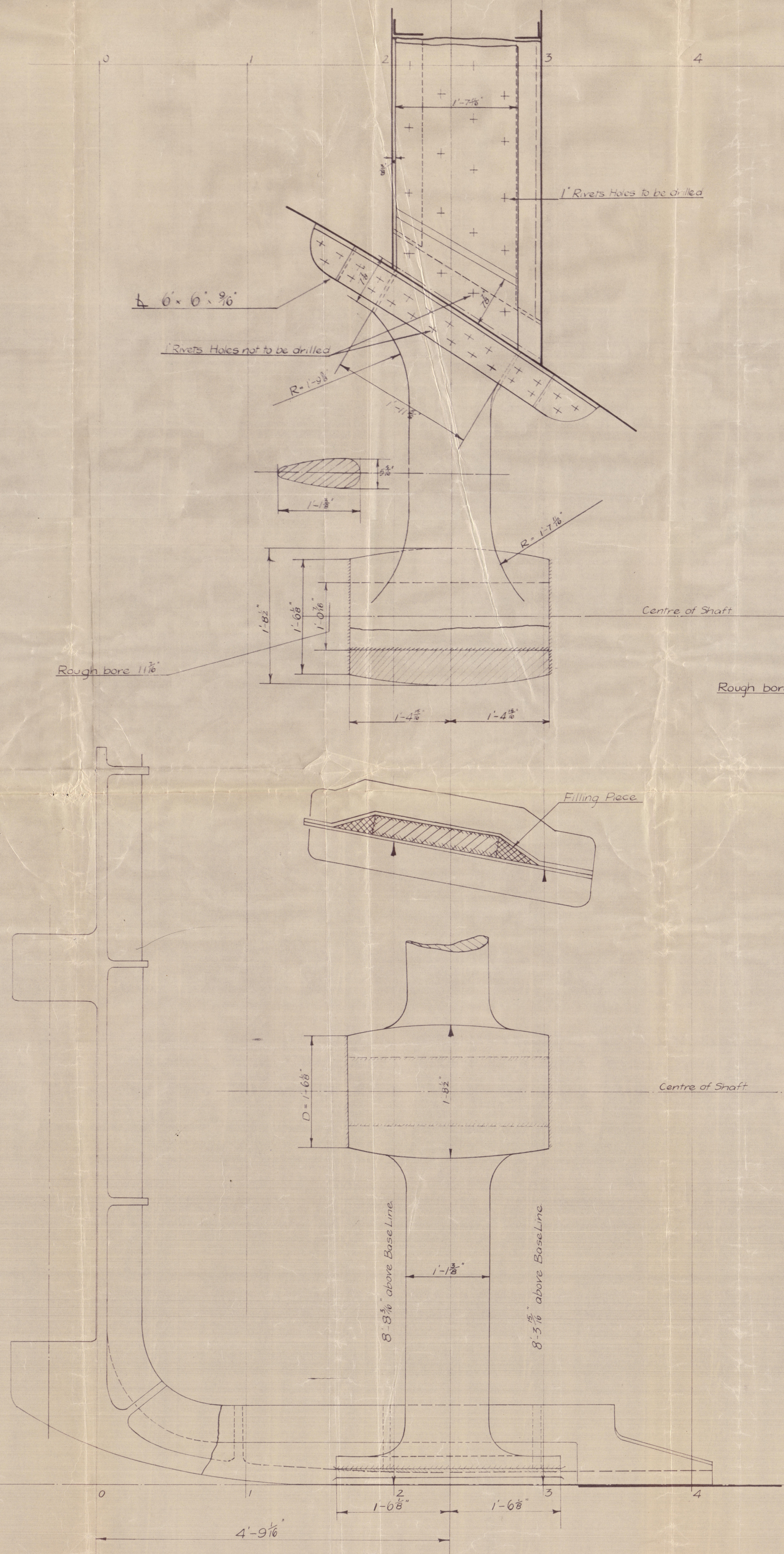


8'-8 1/2" on Frame 2  
 8'-5 1/2" on Frame 3

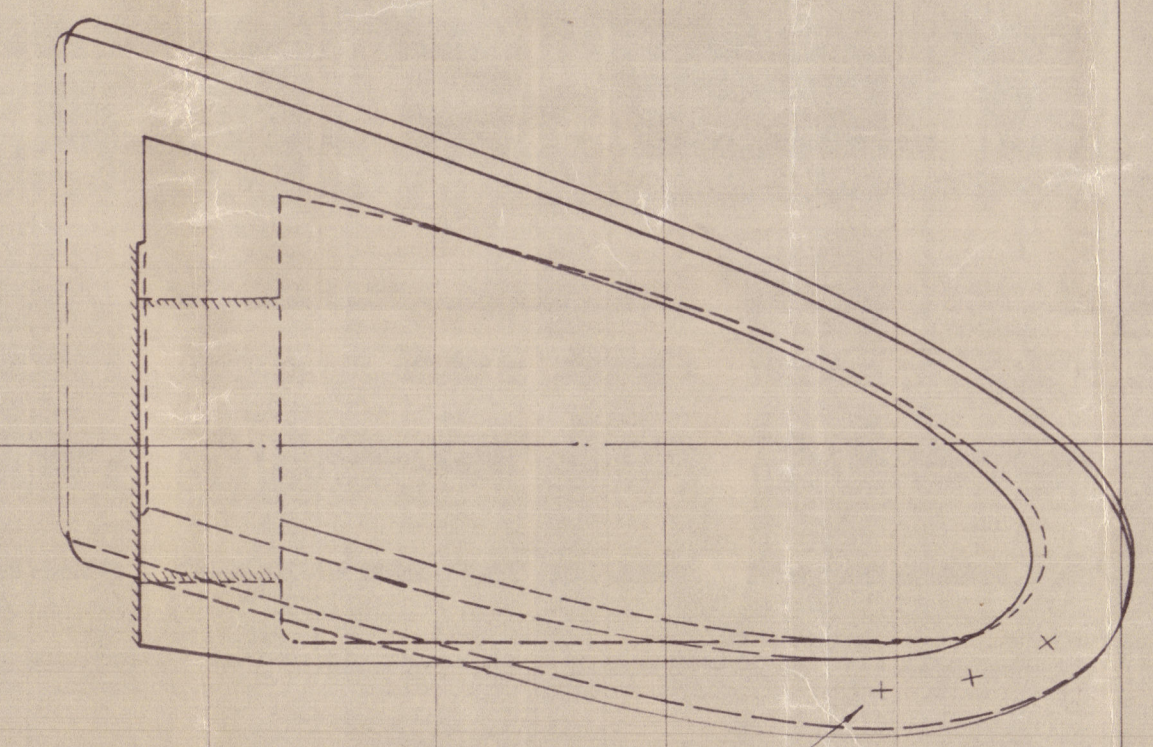
11-1" Ribs. Holes to be drilled

Scale 1:10

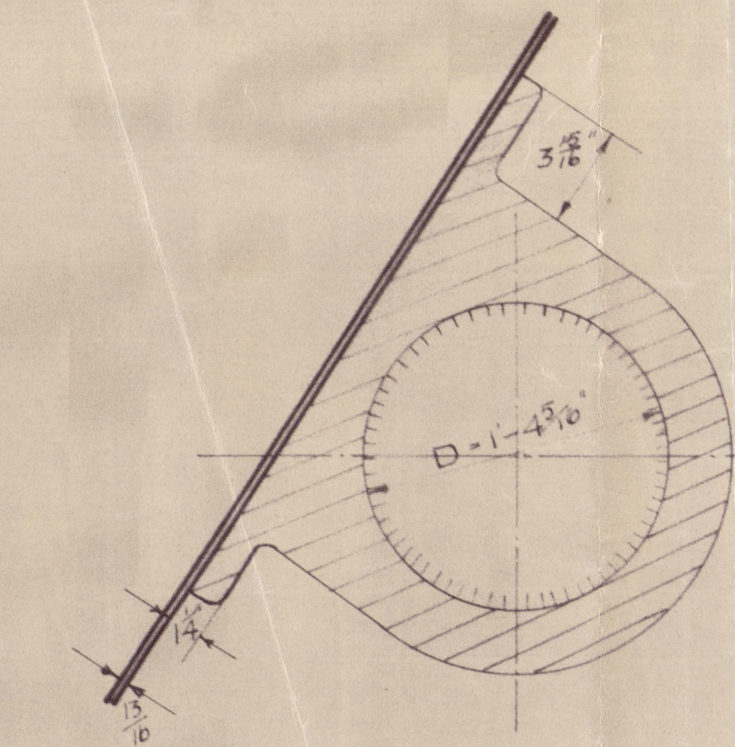
MACHINED



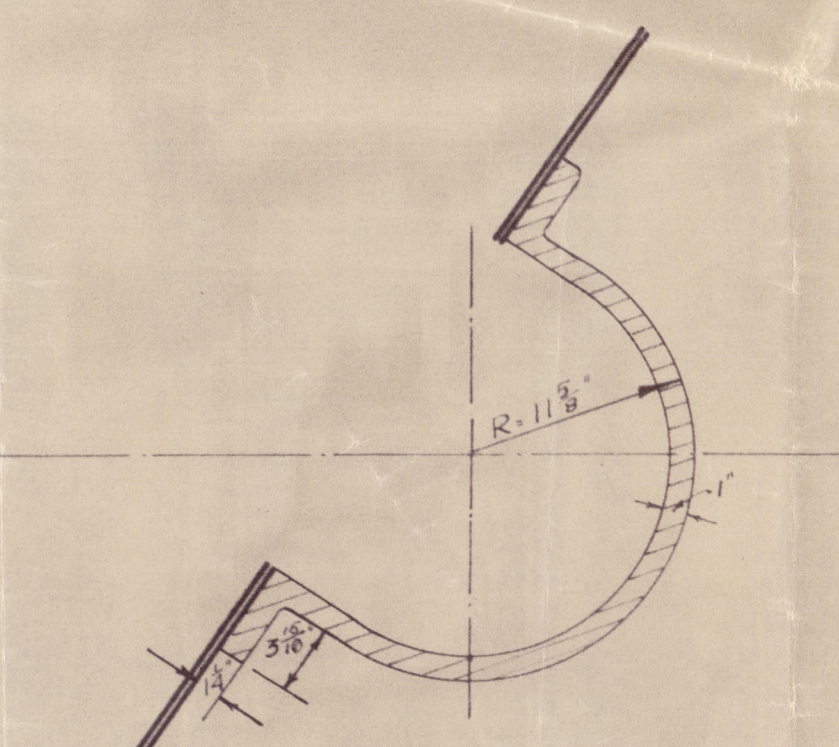
2 REQUIRED  
 Port and Starboard (Starboard side shown)  
 Port side to opposite hand



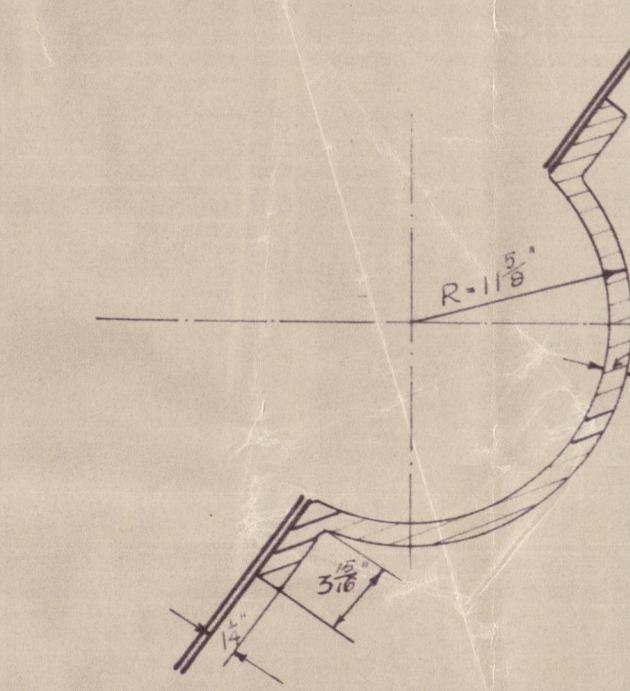
## SECTION AT FRAME 0



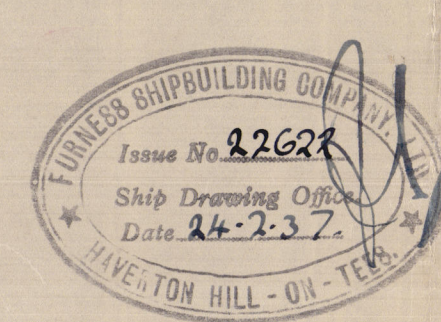
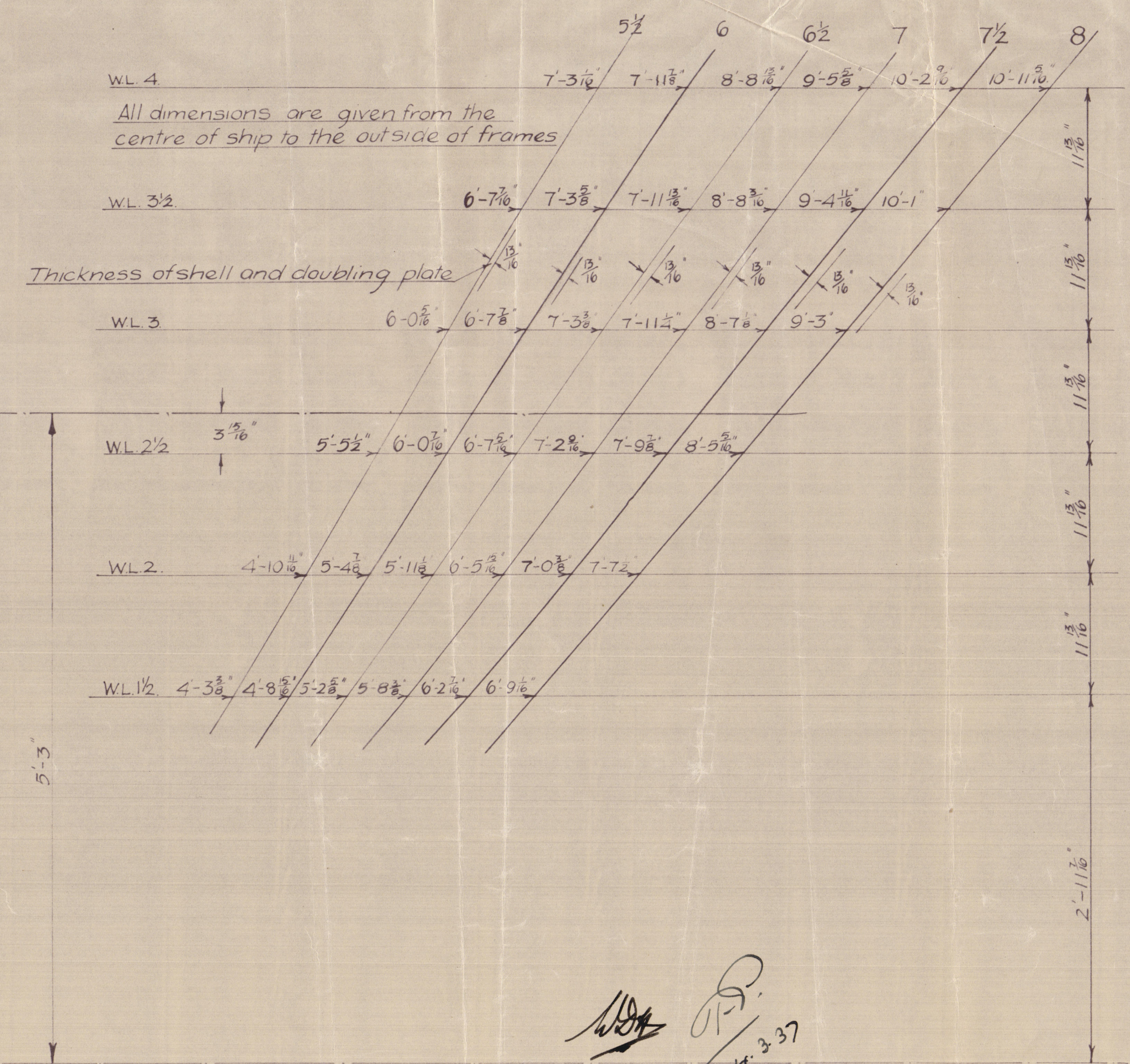
## SECTION AT FRAME 0 1/2



## SECTION AT FRAME 7



## SHAPE OF FRAMES





FURNESS S.B.C.

Nºs 277 + 278

PROPELLER BRACKETS

(5)

S.S. "Rebecca"

MDB. RPT. No. 16275

S.S. "Rosalie"

MDB. RPT. No. 16303

002870-002875-0161 2020



Lloyd's Register  
Foundation