

## Lloyd's Register of Shipping.

Index No. \_\_\_\_\_  
(For London Office only.)

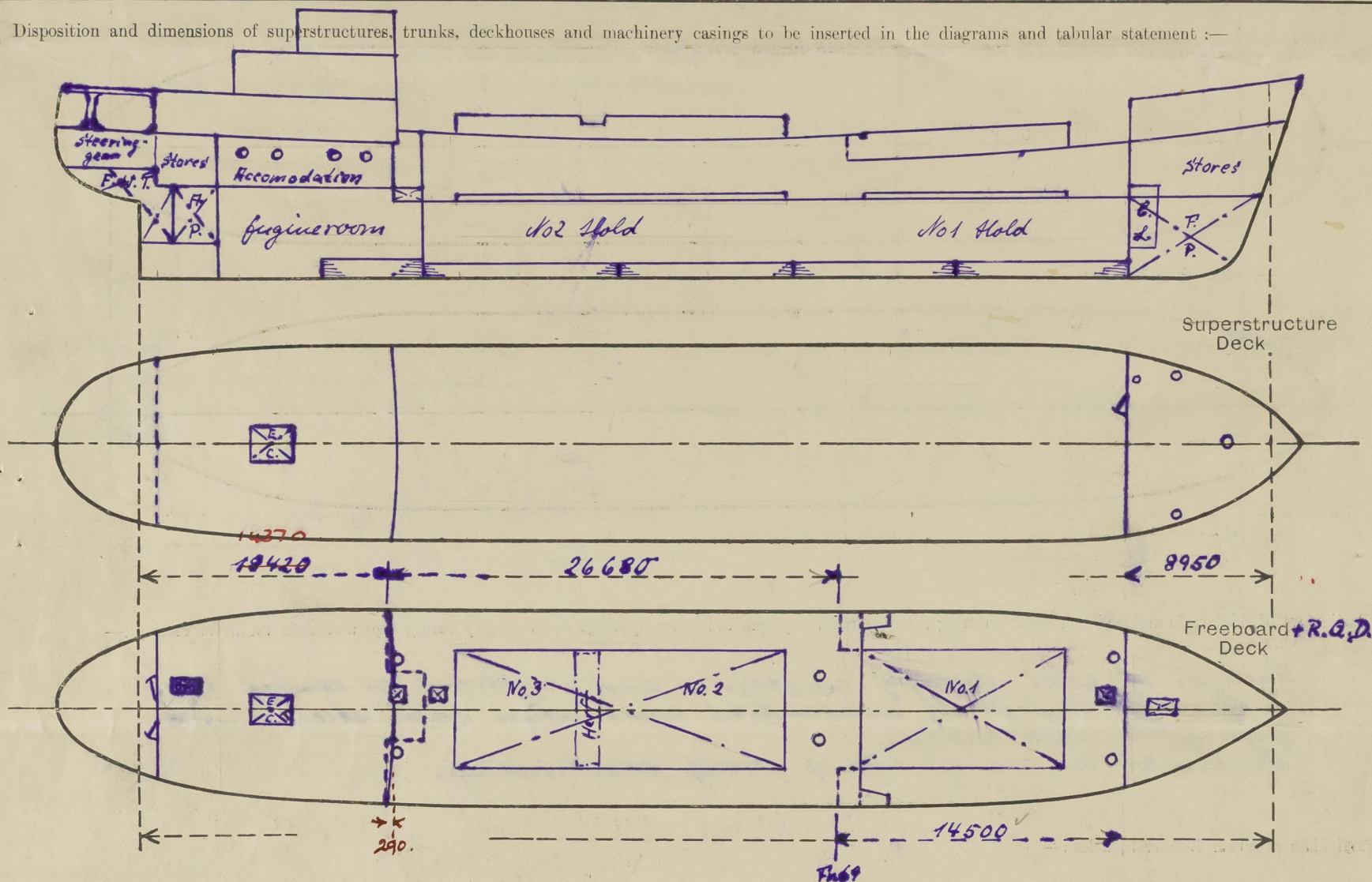
## SURVEYS FOR FREEBOARD.

F.264

(CONDITIONS OF ASSIGNMENT.)

Ship's Name "Teseita" Port of Survey Hamburg  
Official Number \_\_\_\_\_ Surveyor's Signature W. Ackermann  
Nationality and Port of Registry Liberian, Monrovia Date of Survey during construction

Disposition and dimensions of superstructures, trunks, deckhouses and machinery casings to be inserted in the diagrams and tabular statement:—



Particulars of Superstructures, Trunks, Casings, Deckhouses.

	Coaming	Plating	Stiffeners	Spacing	End Attachments of Stiffeners	Size of Openings	Height of Sills	Height of Casings
Poop Bulkhead ... ..								
Raised Quarter Deck Bulkhead <u>Fb 69</u>	<u>10.0</u>	<u>10.0</u>	<u>1 100 x 8</u>	<u>650</u>	<u>electr. welded</u>	<u>-</u>	<u>-</u>	<u>1150</u>
on { Bridge, After Bulkhead <u>Fr. 0</u> ...	<u>7.0</u>	<u>7.0</u>	<u>1 80 x 5.5</u>	<u>650</u>	<u>" "</u>	<u>2-1500 x 650</u>	<u>460</u>	<u>2100</u>
R.Q.D. { Bridge, Forward Bulkhead <u>Fr. 23</u> ...	<u>8.0</u>	<u>7.5</u>	<u>1 160 x 9.0</u>	<u>700</u>	<u>" "</u>	<u>no opening</u>	<u>-</u>	<u>2100</u>
Forecastle Bulkhead... ..	<u>6.0</u>	<u>6.0</u>	<u>1 80 x 5.5</u>	<u>600</u>	<u>" "</u>	<u>1250 x 650</u>	<u>610</u>	<u>2000</u>
Trunk, Aft ... ..								
Trunk, Forward ... ..								
Exposed Machinery Casings on Freeboard or Raised Quarter Decks ...								
Exposed Machinery Casings on Superstructure Decks ... ..								
Machinery Casings within Superstructures not fitted with Class I Closing Appliances ... ..	<u>9.0</u>	<u>6.0</u>	<u>1 60 x 5.0</u>	<u>700</u>	<u>electr. welded</u>	<u>1800 x 600</u>	<u>230</u>	<u>2100</u>
Deckhouses on Flush Deck Ships ...								

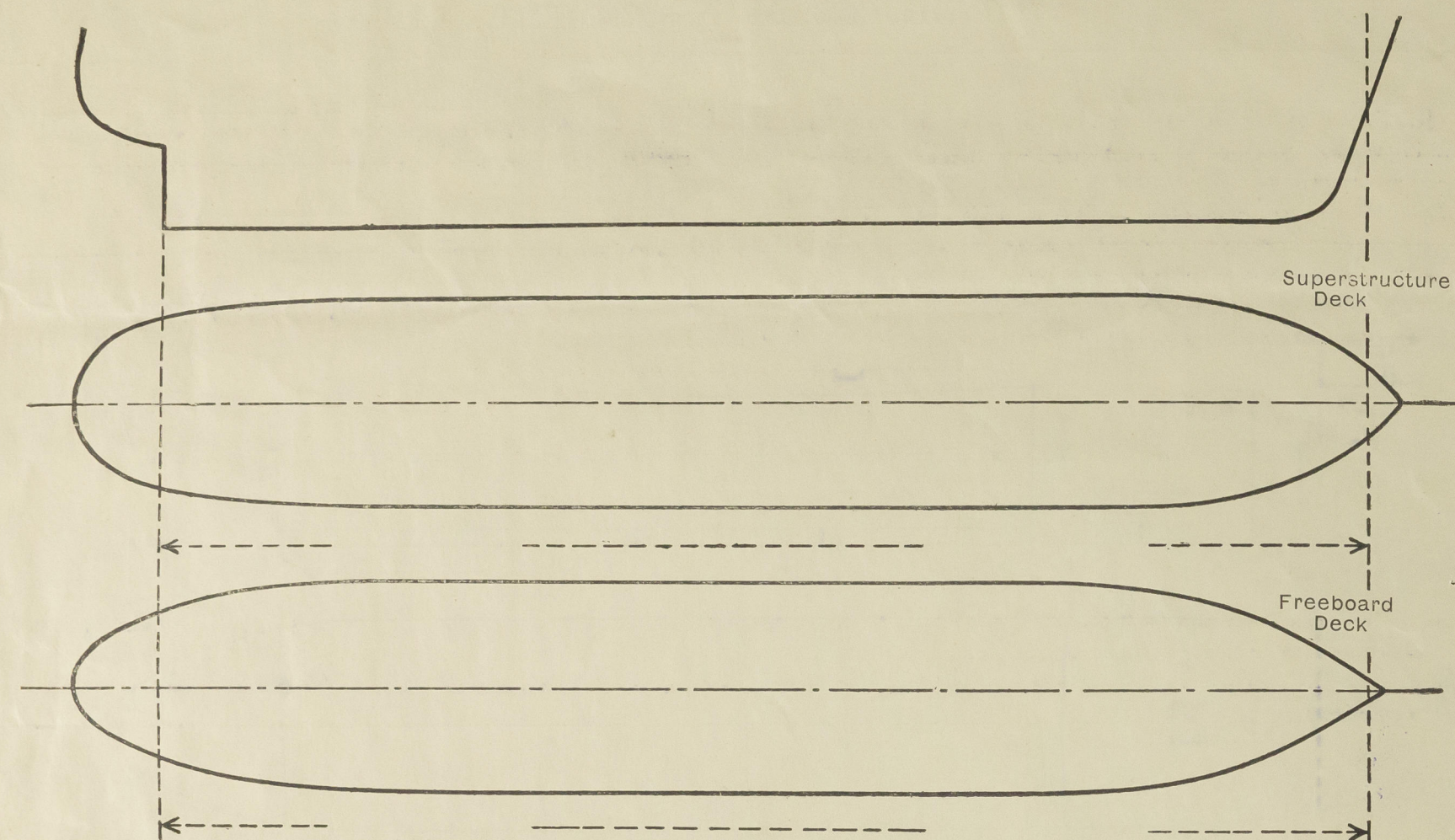
Particulars of Closing Appliances (state if capable of being manipulated from both sides).

Poop Bulkhead ... ..	<u>—</u>
Raised Quarter Deck Bulkhead ...	<u>none</u>
on { Bridge, After Bulkhead <u>Fr. 0</u> ...	<u>Two wt. hinged steel doors secured by toggles o. b. s.</u>
R.Q.D. { Bridge, Forward Bulkhead <u>Fr. 23</u> ...	<u>no openings</u>
Forecastle Bulkhead... ..	<u>wt. hinged steel door secured by toggles o. b. s.</u>
Exposed Machinery Casings on Freeboard or Raised Quarter Decks ...	<u>—</u>
Exposed Machinery Casings on Superstructure Decks ... ..	<u>—</u>
Machinery Casings within Superstructures not fitted with Class I Closing Appliances ... ..	<u>Hinged steel door secured by lock o. b. s.</u>
Deckhouses on Flush Deck Ships ...	<u>Window opening 500 x 400 with 1400 mm secured by fireproof glass not to be opened</u>



# PARTICULARS OF PROTECTION TO OPENINGS, ETC.

The following diagrams should be used to indicate the positions of cargo and coaling hatchways, gangway, cargo and coaling ports, ventilators, companionways, etc., which would affect the seaworthiness of the ship :-



Particulars of fiddle, funnel and ventilator coamings, engine room skylight and other openings in machinery casing tops and their means of closing :-

Funnel of steel strongly constructed and supported on casing top.  
engine room skylight of substantial construction with steel hinged flaps fitted with bullees.  
Ventilator on casing top of strong construction.

Particulars of Flush Bunker Scuttles :-

none

Particulars of Companionways :-

none

Particulars of Ventilators in exposed positions on freeboard and superstructure decks :-

## Forecastle deck

- 1- 300 mm dia x 10 mm, 910 mm high
- 2- 200 " " x 10 " 910 "
- 1- mushroom vent. 200 mm dia

## Freeboard deck

- 2- 670 mm dia x 10 mm, 910 mm high

## Raised Quarter Deck

- 2- 420 mm dia 12 mm, 3500 mm high, spec. supported
- 2- derrick posts 600 mm dia x 17 mm
- 2- goose neck 300 mm x 80 mm x 4 mm, 460 mm high

all ventilators strongly constructed and wood plugs and canvas cover fitted.  
Derrick posts strongly constructed and supported.

Particulars of Air Pipes in exposed positions on freeboard, raised quarter, or superstructure decks :-

## Forecastle deck

- 2- 2" dia, 460 mm high

## Freeboard deck

- 2- 2" dia, 910 mm high
- 4- 2" " 820 " (bulwark height)

## Raised Quarter Deck

- 13- 2" dia, 760 mm high
- 5- 1 1/4 " " 760 " "
- 1- 1 1/4 " " 760 " "
- 1- 3 1/2 " " 760 " "
- 1- 2 1/2 " " 760 " "

## Poopedeck

- 5- 2" dia, 460 mm high
- 3- 2 1/4 " " 460 "

All airpipes are fitted with wood plugs except airpipes to O.F. tanks fitted with double gleezes in accordance with Rule Regu.

INDEX N<sup>o</sup> F. 264.

Particulars of Gangway Cargo and Coaling Ports :-

None

Particulars of Scuppers and Sanitary Discharge Pipes :-

Sanitary discharges with a dia. of 100 mm from superstructure spaces, aft, led through shipside below freeboard deck and fitted with ~~non~~ non return valves and malleable cast iron storm valves to shipside.  
Sanitary discharges with a dia. of 50 mm from superstructure spaces, aft, led through shipside below freeboard deck and fitted with brass non return valves and malleable cast iron storm valves to shipside.  
Sufficient number of deck scuppers on Freeboard and Raised Quarter deck.  
No overboard discharges from spaces below freeboard deck

Particulars of Side Scuttles :-

300 mm dia. sidescuttles of efficient construction with malleable cast iron deadlights (hinged) of strong construction  
10- 300 mm dia. sidescuttles of same construction are situated in aftership below freeboard deck

Vertical distance of Sill of lowest Side Scuttle above top of keel 5870 mm

Particulars of Guard Rails :-

## Raised Quarter Deck and Freeboard deck

Bulwark 900 mm high x 5 mm with 165 x 65 x 13 rail bar and 190 x 7 butt plate stays on each 3 frame.

## Forecastle deck:

3 guard rails 3/4" dia with stanchions 900 mm high, 1 1/4" dia and about 1200 mm apart.

Particulars of Gangways, Lifelines, etc. :-

lifelines fitted P+S in Freeboard and Raised Quarter deck well attached to permanent eyeplates.

## Particulars of Freeing Arrangements.

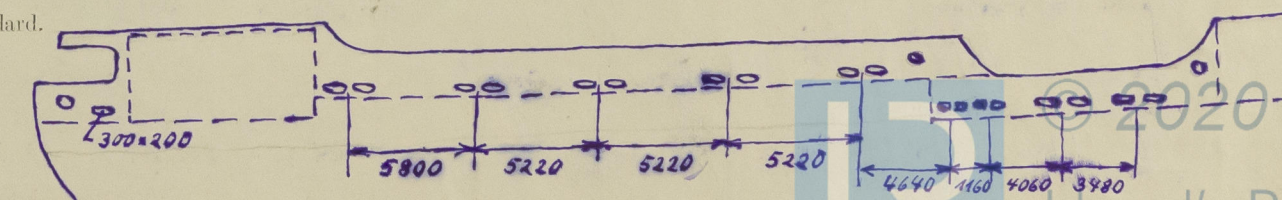
	Length of Bulwark	Height of Bulwark	Size of Freeing Ports	Number each side	Area each side	Rule area each side
R.A.D. After Well ... ..	28000 mm	900 mm		5	1.75 m <sup>2</sup>	1.70 m <sup>2</sup>
Forward Well ... ..	1450 mm			① 2 ② 2	1.18 m <sup>2</sup>	1.06 m <sup>2</sup>

State position of each freeing port ... .. { After Well :-

(F. and A. position and height above deck edge) { Forward Well :-

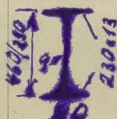
State whether the freeing ports are fitted with shutters, bars, or rails, and give particulars of such :-

Additional area where sheer is less than standard.





## PARTICULARS OF PROTECTION TO OPENINGS, ETC.

HATCHWAYS ON FREEBOARD AND SUPERSTRUCTURE DECKS.									
Description of Hatchway			Freeboard Deck No 1			Reinforced Concrete Deck No 2			Forecastle Reinforced Concrete Deck opening
Dimensions of Hatchway			9860/6000			18560/6000 [subdivided by "kerft"]			9250x280
COAMINGS	{	Height above Deck	1200			1000			230
		Thickness	{	Sides	13		13		12
				Ends	13		12		
		Stiffeners	HP 200x10		HP 200x10		-		
		Brackets, Stays	8x10 w. 75" on each 2nd ft.		HP 200x10 on each 3rd ft.		-		
HATCH BEAMS	{	Number	Steel covers			12			-
		Spacing	Part cut:		1385		-		
		Scantling and Sketch	Deckbeams 120x10 [see drawing attached & sketch below]				-		
	{	Bearing Surface							
FORE AND AFTERS	{	Number							
		Spacing							
		Unsupported Lengths							
		Scantling* and Sketch							
		Bearing Surface							
HATCH COVERS	{	Material	Steel			Wood			Wood
		Thickness	6		65		65		
		How fitted	transverse		P+H		transverse		
		Bearing Surface			75		75		
Spacing of Cleats						500			300
Number of Tarpaulins						3			2
*Are wood <del>covers</del> steel shod at <del>ends</del> all bearing surfaces? <i>yes</i>									
Are battens and wedges efficient and in good condition? <i>yes</i>									
Are tarpaulins in good condition and in accordance with rule requirements? <i>yes</i>									
Are lashings provided in accordance with rule requirements? <i>yes</i>									

Particulars of any special features :—

Access opening on Freeboard deck opening 600 x 600 mm sill 650 mm high secured by wt. hinged steel cover with ladders leading to forward Freeboard deck.

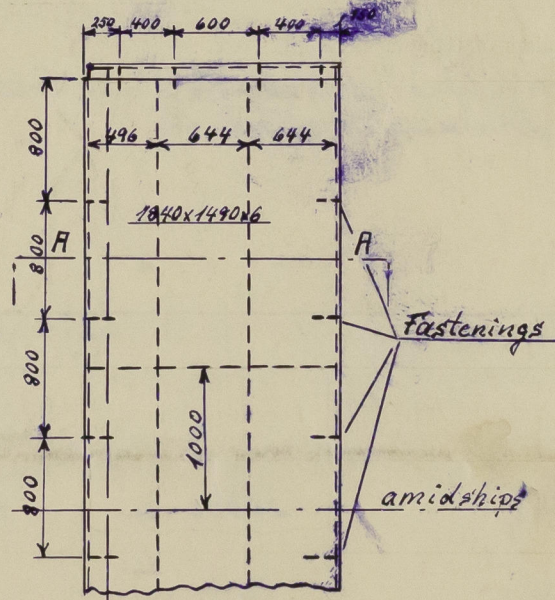
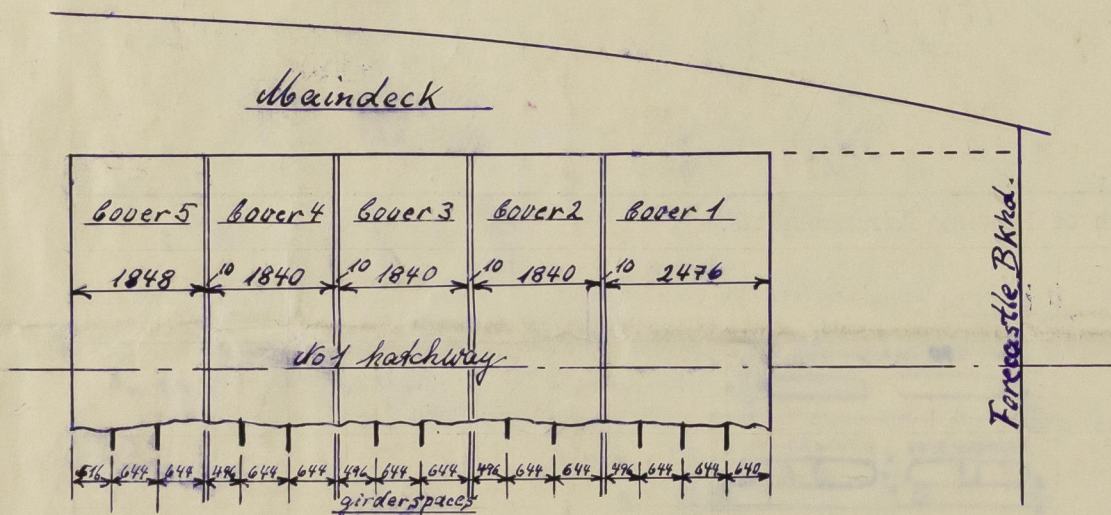
Access opening [Fr. 27-29] on Raised Quarter Deck 600 x 600 mm sill 460 mm high secured by rot. hinged steel cover with toggles leading to after tweendeck.

Access opening [Fr. 23-25] on Raised Quarter Deck 750 x 750 mm sill 460 mm high secured by rot. hinged steel cover with toggles leading to engine store room.

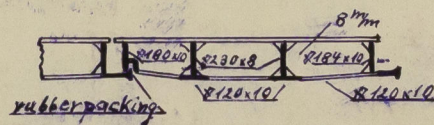
Two hinged steel doors on Tween deck below Redbeck (p+s) in longitudinal bulkheads of engine casing secured by lock opening 1600 x 600 mm sill 230 mm leading to engine spaces [5.6.5]

4th hinged steel door on Tween deck below R.A. Deck in transverse bulkhead [PFR.6] secured by toggles and lock opening 1600x600 mm sill 460 mm leading to accommodation [O.B.S.]

Hinged wood door on Superstructure Deck [Fr. 15] [S. 4.] opening 1600 x 600 mm sill 230 mm leading to accommodation



Steelcovers of Not hatchway  
Patent: Deutsche Werft



### Section A-A