

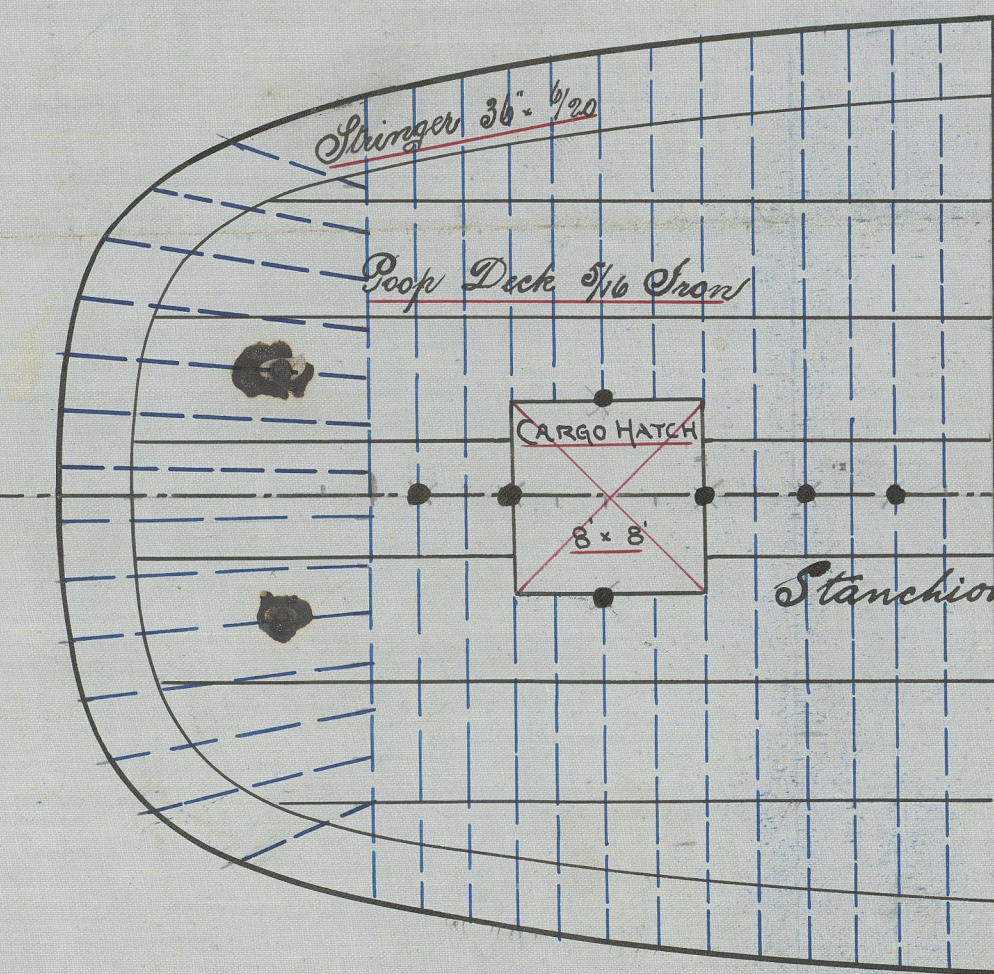
PROPOSED DECK PLANS NO 125 SHIP

SCALE 1/8" = 1 FOOT

18.11.04

POOP DECK

Beams 5 1/2 x 3 1/2 angles on every frame.



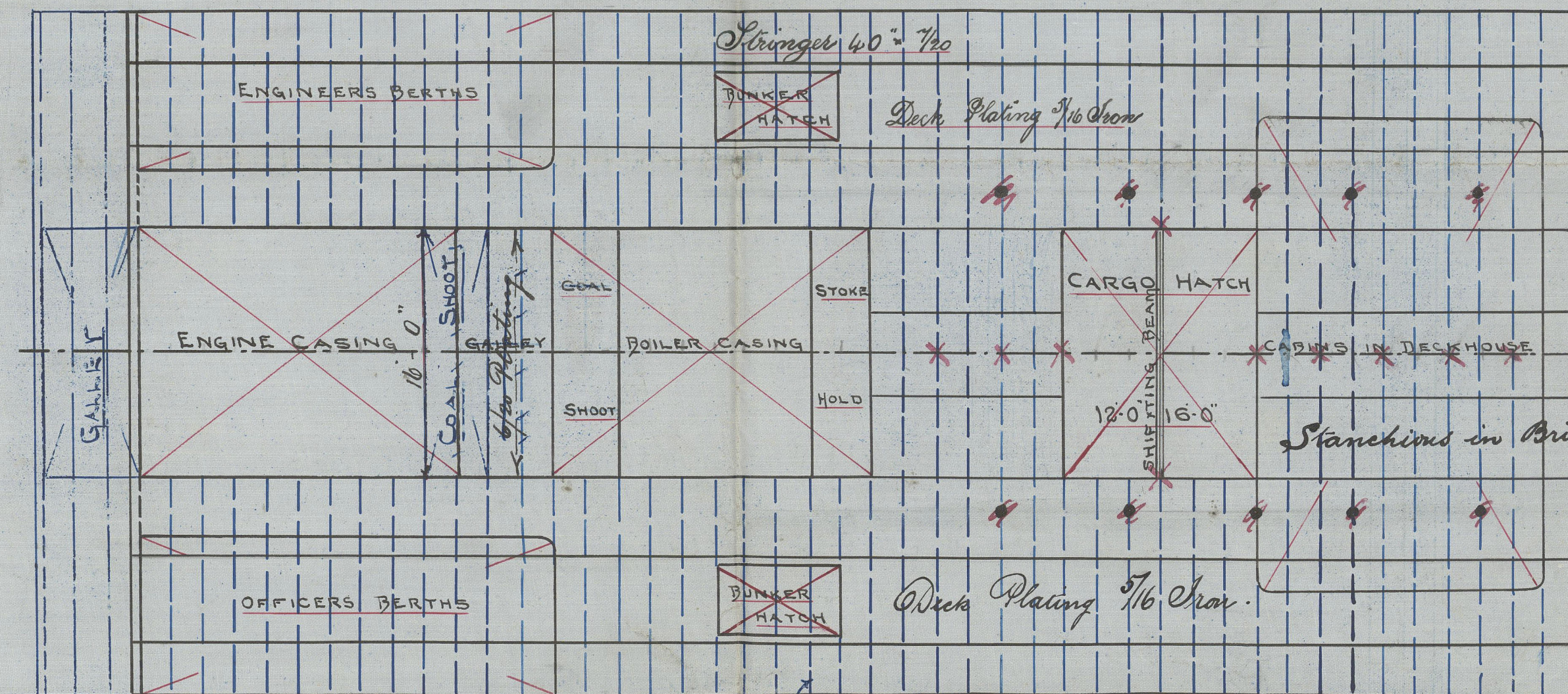
Poof Deck 5/16 Iron.

Stanchions in Poof 2 1/2 Dia.

WOOD SKINNER & CO LTD
SHIPBUILDERS
NEWCASTLE ON TYNE

BRIDGE DECK

Beams 6 x 3 x 7/16 plain angles on every frame

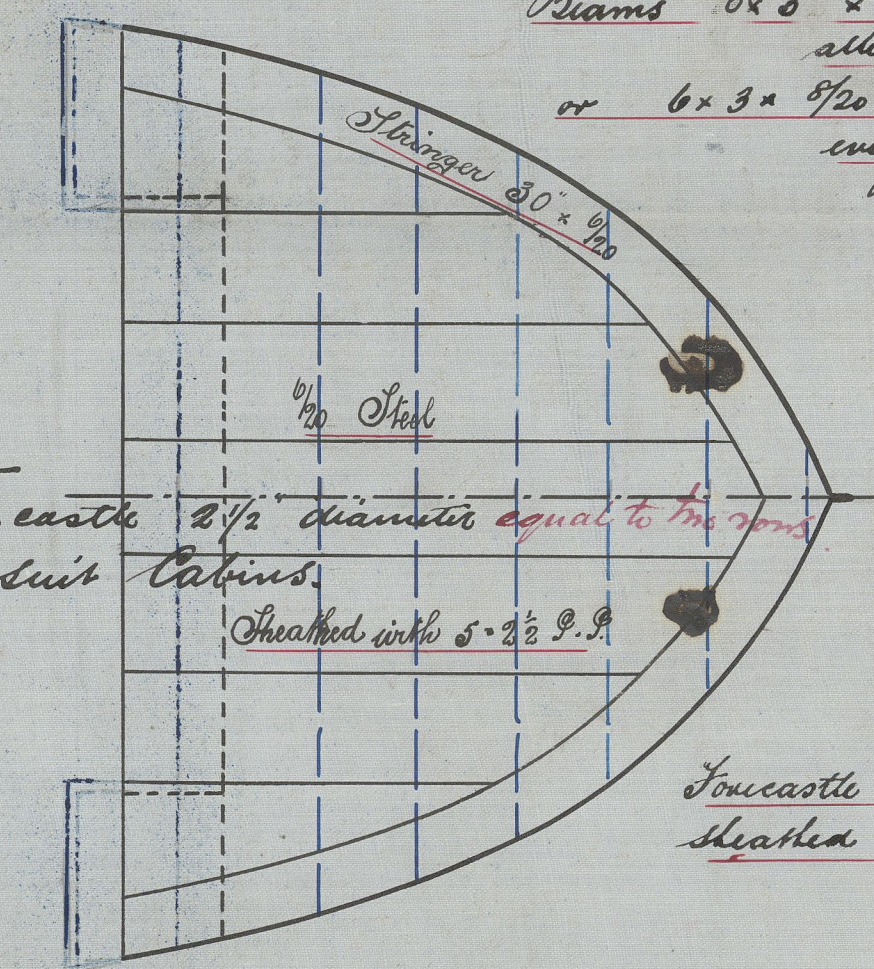


Butts and caps of Poof, Bridge and Fore Deck.
Plating, overlaps and single riveted.
Butts of Stringer Plates double riveted.

Stanchions in Bridge 2 1/2 diameter.

FORECASTLE DECK

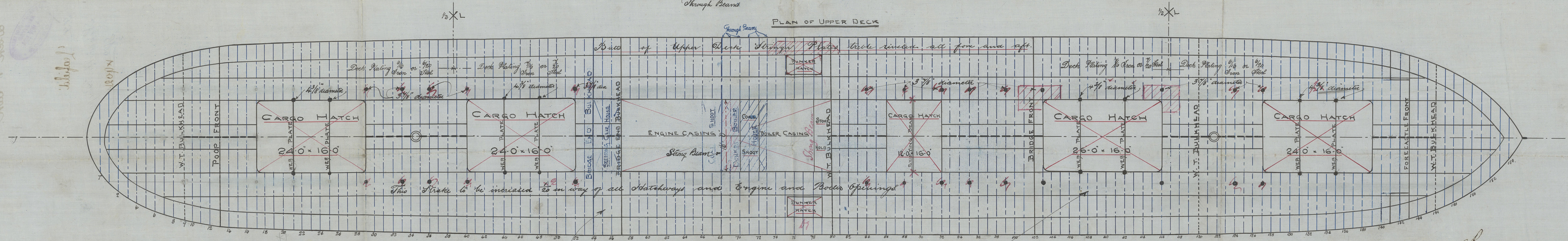
Beams 8 x 8 x 10 Butt angles on alternate frames
or 6 x 3 x 7/16 plain angles on every frame.



Stanchions in Forecastle 2 1/2 diameter equal to the fore
to be arranged to suit cabins.
Sheathed with 5 x 2 1/2 pitch pins.

Forecastle Deck 20 steel
Sheathed with 5 x 2 1/2 pitch pins

PLAN OF UPPER DECK



All Hatchways & Openings doubled
at corners

Upper Deck Beams 7 1/2 x 3 x 7/16 Butt angles every frame
Heath End Beams 10 x 3 1/2 x 7/16 Butt angles see profile

Butts of Deck Plating double riveted for 1/2 Length and single at ends.

C.B.
18.11.04

Messrs. Wood Skinner & Co
No. 125 Ship.
Deck Plan.



S.S. 'Leafield'

Newcastle Report

No. 49021.



© 2020

Lloyd's Register
Foundation