

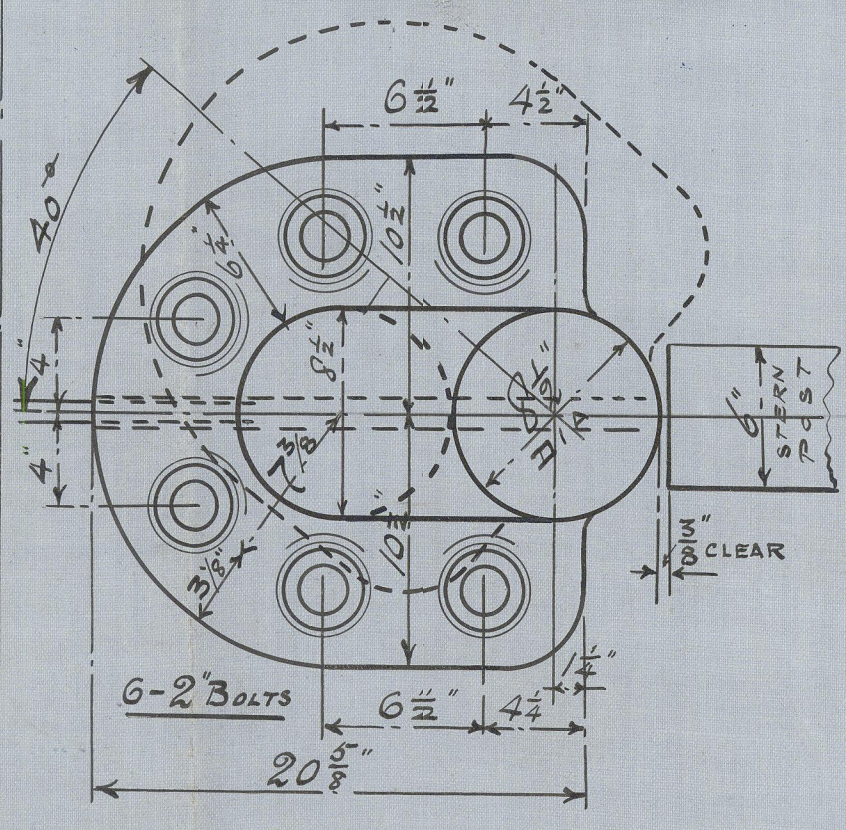
RUDDER POST

PLATE 21" 20" 1 1/8" WIDE NOTCH 1" DEEP

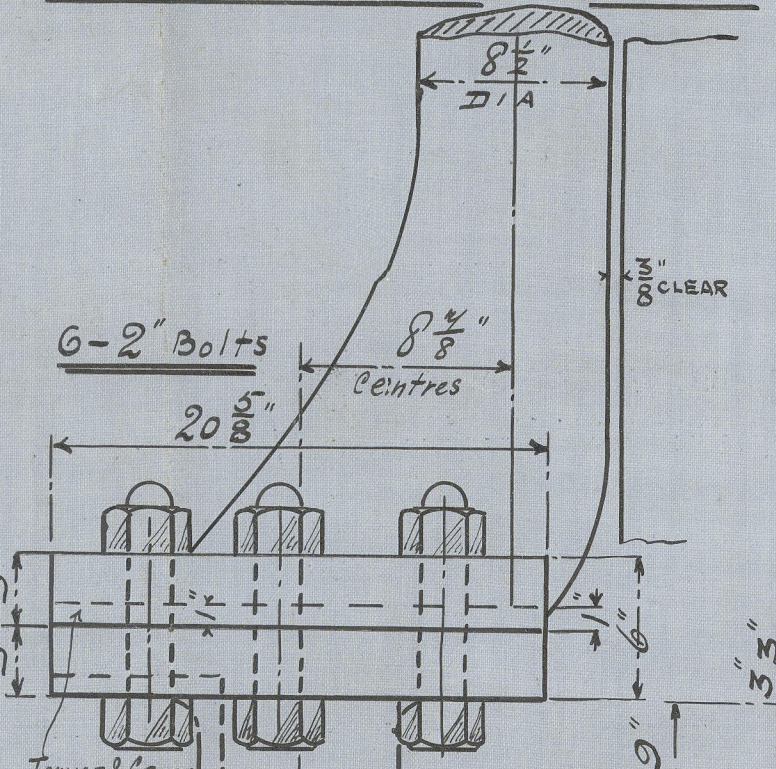
6 1/2" DIA. CHAMFER 4 1/2" DIA. PINTLES.

SKETCH OF COUPLING

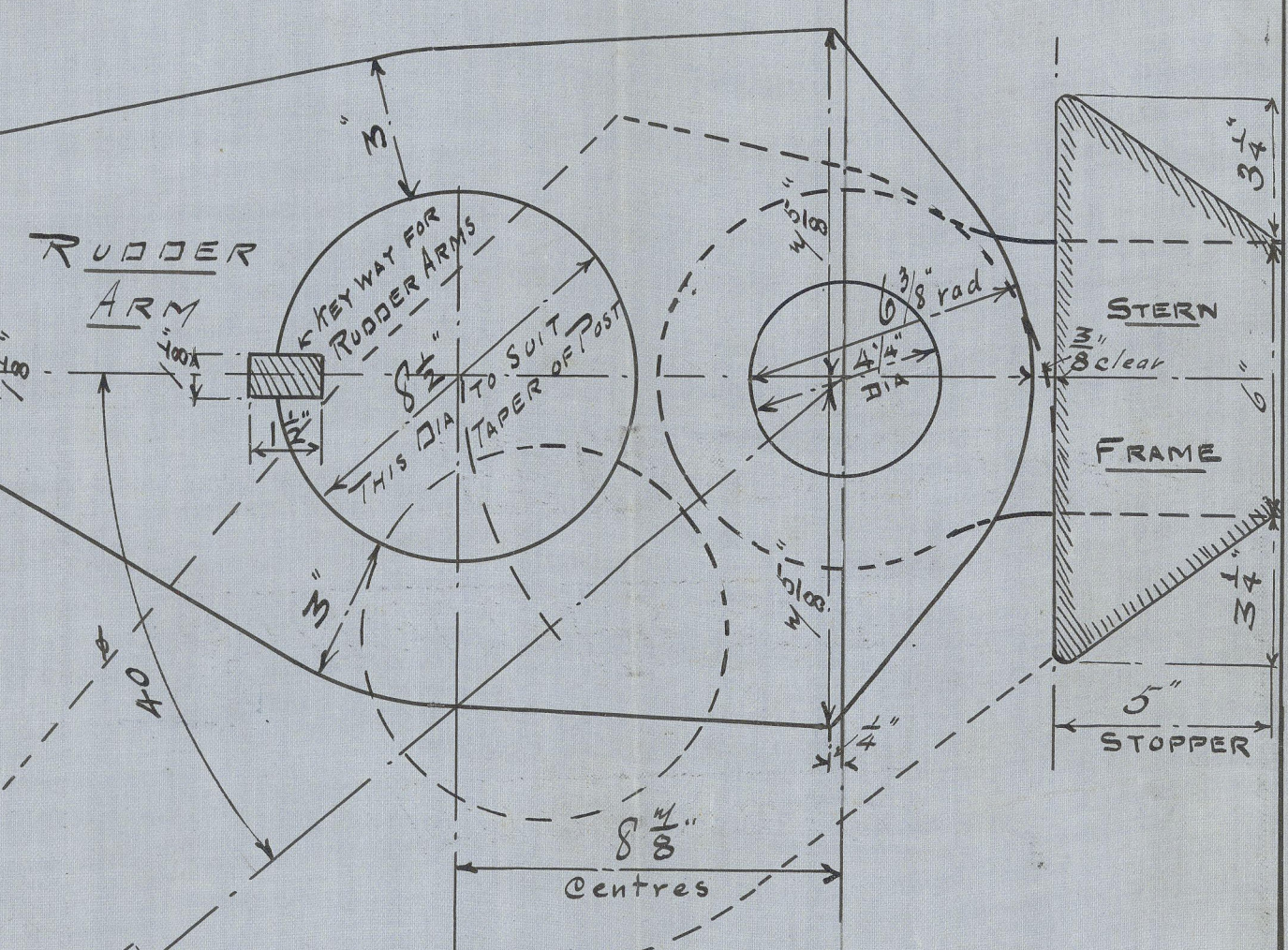
Scale 1/8" = one foot



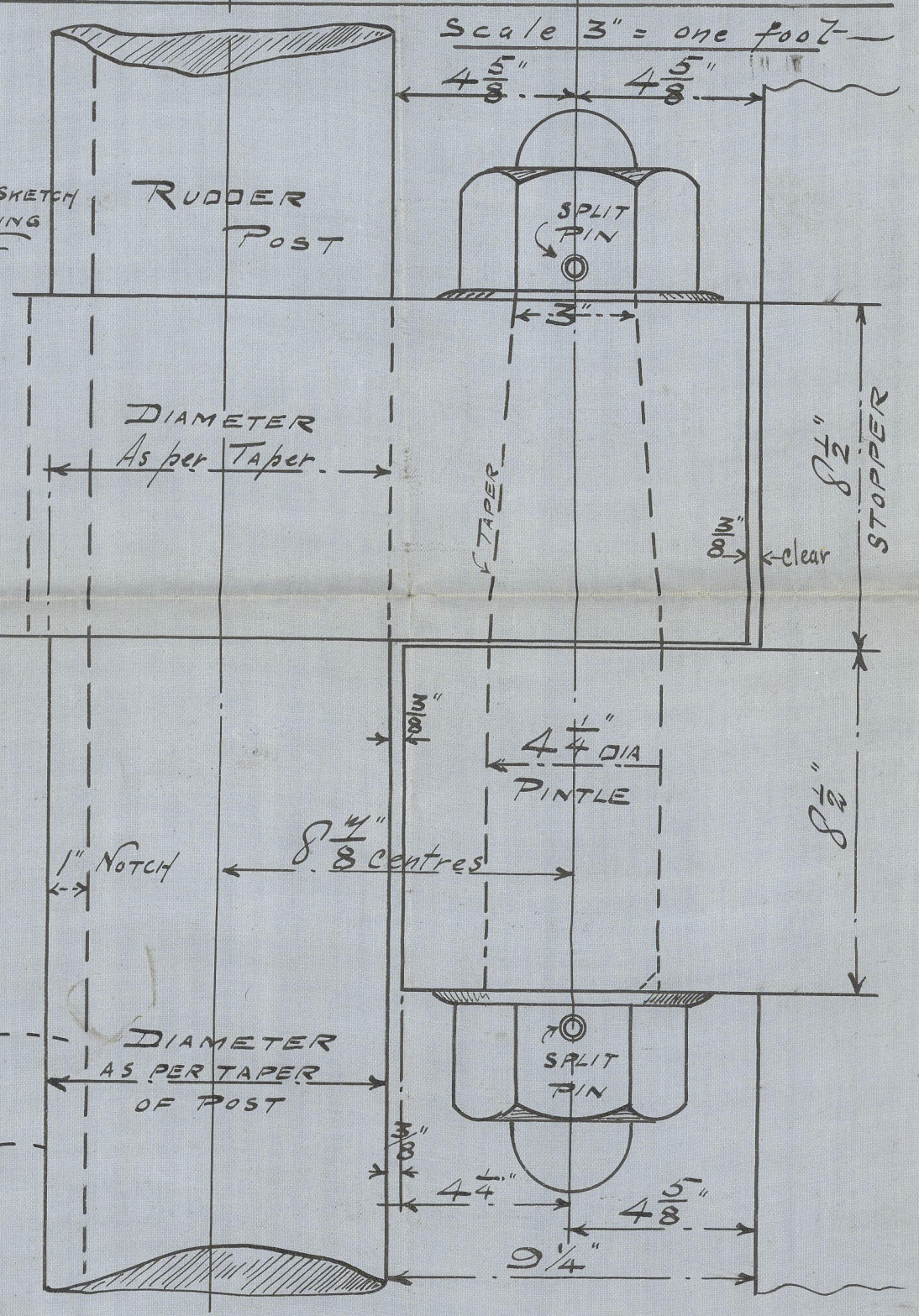
ELEVATION OF COUPLING



PLAN OF STOPPER GUDGEON B



ELEVATION OF STOPPER GUDGEON B



PROPOSED SINGLE PLATE RUDDER No 125 SHIP.

TO PASS LOYD'S SURVEY.

DRILLING

RUDDER FRAME DRILLED WITH 1 1/8" HOLES SPACED 6 1/2" APART (CENTRES).

Rivets in rudder arms 1 1/8" spaced 5 1/8" apart.

WOOD SKINNER & CO LTD SHIPBUILDERS NEWCASTLE ON TYNE

29. 11. 04.

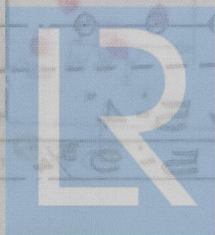
Wood Skinner & Co. Ltd.  
No. 125 9s.

Single Plate Rudder

J.F. 'Leaffield'

Newcastle Report

Sp. 49.021.



© 2020

Lloyd's Register  
Foundation

002858-002869-0179