

11 MAY 1950

Rpt. C.11.

Lloyd's Register of Shipping.

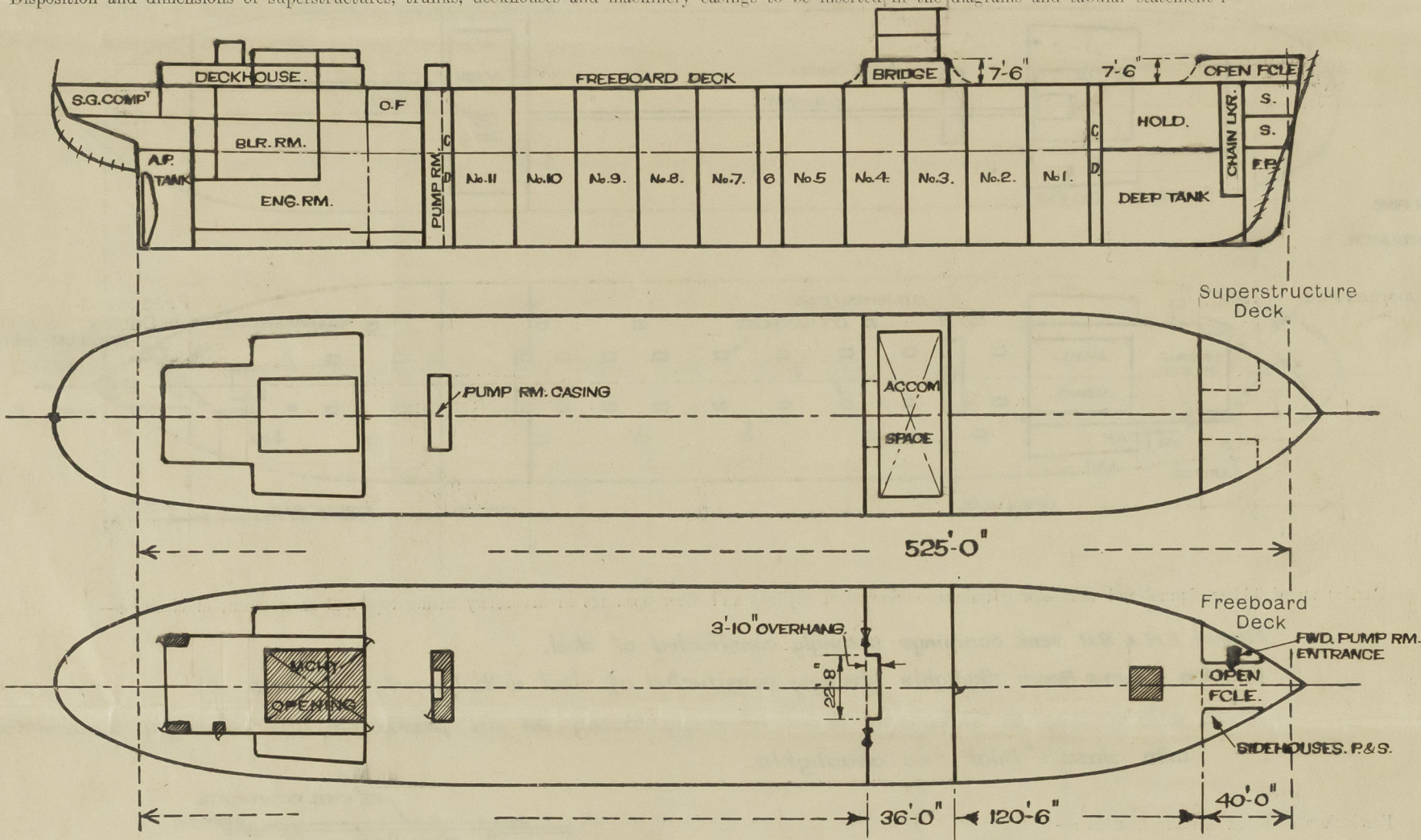
SURVEYS FOR FREEBOARD.

(CONDITIONS OF ASSIGNMENT.)

Index No. _____
(For London Office only.)

Ship's Name **"ESSO BELFAST"** Port of Survey **SOUTHAMPTON**
Official Number **183240** Surveyor's Signature **T. Smart**
Nationality and Port of Registry **BRITISH - LONDON** Date of Survey **MAY. 1950.**

Disposition and dimensions of superstructures, trunks, deckhouses and machinery casings to be inserted in the diagrams and tabular statement:—



Particulars of Superstructures, Trunks, Casings, Deckhouses.

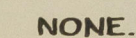
	Coaming	Plating	Stiffeners	Spacing	End Attachments of Stiffeners	Size of Openings	Height of Sills	Height of Casings
Poop Bulkhead ...	—	—	—	—	—	—	—	—
Raised Quarter Deck Bulkhead ...	—	—	—	—	—	—	—	—
Bridge, After Bulkhead ...	·40" ✓	·40" ✓	6 × 3½ × 36 C ✓	30" ✓	T. } LUGGED. B. BKTD.	4'-3" × 36" ✓	22"	7'-6" ✓
Bridge, Forward Bulkhead ...	·43" ✓	·43" ✓	10 × 3½ × 45 C ✓	30" ✓	T. } LUGGED. B. BKTD.	4'-8" × 26" ✓	16"	7'-6" ✓
Forecastle Bulkhead ...	—	FRONT	10 × 3½ × 45 C	30" AVERAGE	T. } LUGGED. B. BKTD.	—	—	—
Trunk, Aft Pump Rm. Casing ...	·40"	·40" SIDES	5 × 3 × 50 L	28"	T. } LUGGED. B. LUGGED.	4'-8" × 26"	15"	7'-6" ✓
Trunk, Forward Pump Room Entr.	·30"	·30"	3½ × 2½ × 35 L	24"	T. } LUGGED. B. NOT ATTACHED.	4'-8" × 26"	18"	7'-6" ✓
Exposed Machinery Casings on Freeboard — Raised Quarter Decks ...	·50"	·40"	10 × 3½ × 45 C	32"	T. } LUGGED. B. BKTD.	—	—	— ✓
Exposed Machinery Casings on Superstructure Decks ...	—	—	—	—	—	—	—	—
Machinery Casings within Superstructures not fitted with Class I Closing Appliances ...	—	—	—	—	—	—	—	—
Deckhouses on Flush Deck Ships ...	·50"	·43	6 × 3½ × 30 C	28½"	T. BKTD. B. LUGGED.	4'-8" × 24" 4'-8" × 26"	18"	7'-6" ✓

Particulars of Closing Appliances (state if capable of being manipulated from both sides).

Poop Bulkhead ...	—
Raised Quarter Deck Bulkhead ...	—
Bridge, After Bulkhead ...	2½" STORM BOARDS IN CHANNELS TO FULL HEIGHT OF OPENING. ✓
Bridge, Forward Bulkhead ...	HINGED STEEL W.T. DOOR MANIPULATED BOTH SIDES. ✓
Forecastle Bulkhead ...	—
Exposed Machinery Casings on Freeboard — Raised Quarter Decks ...	PUMP RM. ENTRANCES — HINGED STEEL W.T. DOORS MANIPULATED BOTH SIDES. ✓
Exposed Machinery Casings on Superstructure Decks ...	—
Machinery Casings within Superstructures not fitted with Class I Closing Appliances ...	—
Deckhouses on Flush Deck Ships ...	HINGED STEEL W.T. DOORS MANIPULATED BOTH SIDES. ✓

Esso Belfast.

Particulars of Gangway Cargo and Coaling Ports :—



FROM SPACES BELOW FBD. DECK (LOWER DECK AFT)

2 @ 4" P.S. One on ship's side below Fbd. Dk. and one in accessible position

1 @ 4" 3tarb.) fitted with out-flow non return valve on shies side without positive means of closing

FROM SPACES ABOVE FBD. DECK. (BRIDGE DECK)

1 @ 2 1/2" p.e.s. Fitted with automatic non-return valve on ship's side above fwd. deck without

1 @ 4" P&S. } positive means of closing.

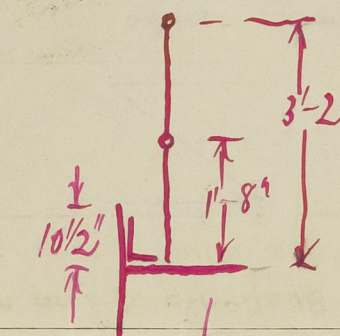
UPPER DECK SCUPPERS, AFT.

2 @ 2 1/2" P.S. Scupper pipes draining upper deck discharging direct overboard

Particulars of Side Scuttles :—

LOWER DECK ACCOMMODATION. AFT.

14" dia. side scuttles of strong construction, fitted with hinged deadlights.



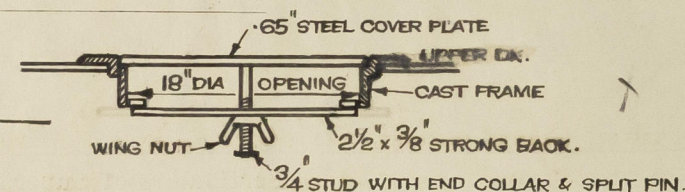
Funnel, E.R. & B.R. vent. coamings strongly constructed of steel.

Eng. Rm. & Pump Room skylights strongly constructed of steel with hinged steel flaps.

12" dia side scuttles in sides and front of mchy. casing on aft deckhouse top, strongly constructed, with glass 1" thick, no deadlights.

Particulars of Flush Bunker Scuttles :—

2-18" Dia. scuttles in Upper Dk aft. to Steering Compt.
with chain attachment.



Particulars of Companionways :

AFT DECKHOUSE	18" sill	} Plating steel, openings 4'-8" x 26" closed by hinged steel w.t. doors manipulated both sides.
AFT PUMP ROOM.	15" "	
FWD " "	18" "	

MCHY. CASING ON AFT DKHOUSE TOP - Plating steel, openings 4'-8" x 26" closed by hinged steel doors manipulated both sides - 15" sill.

BRIDGE DECK: Opening in deck within deckhouse. Deckhouse plating steel, openings at after end 5'2" x 24", 17" sill closed by hardwood doors 1 3/4" thick manipulated both sides.

Particulars of Ventilators in exposed positions on freeboard and superstructure decks:—

Vertical distance of Sill of lowest Side Scuttle above top of keel.

Particulars of Guard Rails :— **SET UP WITH STRETCHING SCREWS**

UPPER DECK. Guard chains: $\frac{7}{16}$ " short link @ 1'-8" and 3'-2" above dk.

Stanchions 4'-4' apart.

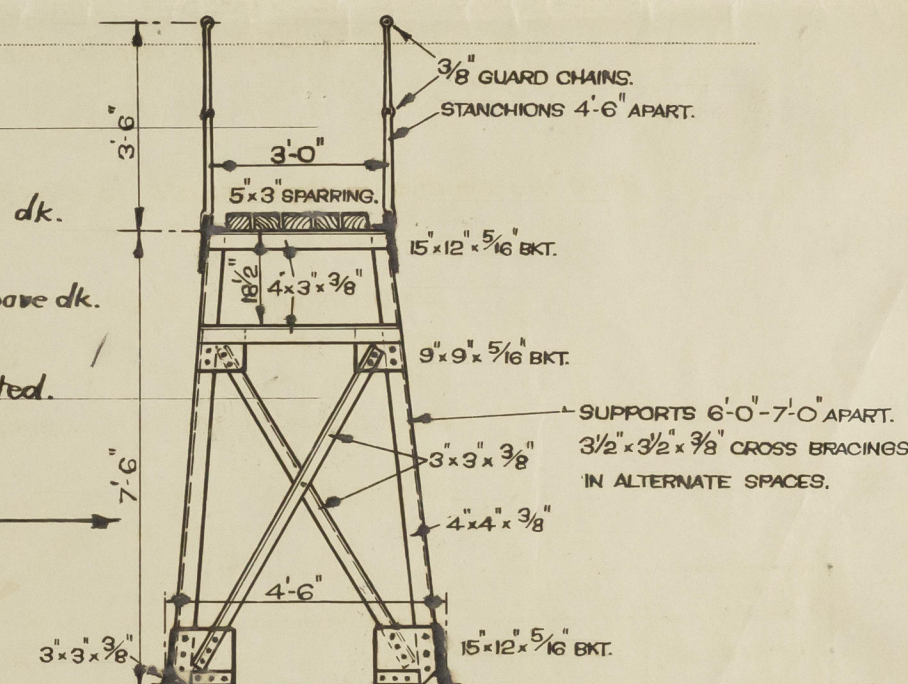
BRIDGE DK. SIDES Guard rails 1" dia @ 2'-0" and 1 1/4" dia @ 3'-5" above dk.

& FCLE. DK. Stanchions 4'-6" apart.

BRIDGE DK. FRONT- Steel Bulwark 3'-3" high, efficiently supported.

Particulars of Gangways, Lifelines, etc. :—

Permanent Gangway fitted fore and aft between aft
deckhouse and bridge.



Particulars of Freeing Arrangements.						
	Length of Bulwark	Height of Bulwark	Size of Freeing Ports	Number each side	Area each side	Rule area each side
After Well	} NONE - OPEN RAILS P & S.					
Forward Well						

State position of each freeing port (After Well :—

(F. and A. position and height above deck edge) } Forward Well :—


State whether the freeing ports are fitted with shutters, bars, or rails, and give particulars of such :—

Additional area where sheer is less than standard.

Particulars of Air Pipes in exposed positions on freeboard, raised quarter, or superstructure decks :—

UPPER DK AFT	2 @ 3 1/2"	G.N. Air Pipe	4'-6"	above deck	- AFT PEAK AIR (P & S)	} Wooden taper plugs provided for closing	
"	"	1 @ 2"	"	29"	"		- F.W. TANK AIR (S)
"	"	1 @ 2"	"	36"	"		- SOIL PIPE VENT (S)
"	FWD	1 @ 3"	"	18"	"		- FORE PEAK

PARTICULARS OF PROTECTION TO OPENINGS, ETC.

HATCHWAYS ON FREEBOARD AND SUPERSTRUCTURE DECKS.														
Description of Hatchway	FORWARD. STORE.	1-CHN. LKR. 1- HOLD.	HOLD	2-FWDC/D. 2-AFT C/D.	30-O.T. CARGO TANK	6-O.T.CARGO & OIL FUEL.					
Dimensions of Hatchway	4'-0" x 4'-0"	1'-11" x 1'-3"	9'-10" x 10'-7 1/2"	23" dia.	6'-0" x 4'-0"	4'-0" x 4'-0"					
COAMINGS	{	Height above Deck	...	18"	4 1/2 x 3 1/2	30"	20"	30"	30"					
		Thickness	{	40"	x 40 L	40	35	36	36					
		Sides	...		4 1/2 VERTL.	47								
		Ends	...											
Stiffeners	-		7" B.A. ON SIDES & ENDS	-	-	-					
Brackets, Stays	-		NO BKTS.	-	-	-					
HATCH BEAMS	{	Number	...			ONE								
		Spacing	...			4'-11 1/2"								
		Scantling and Sketch	...			12 x 5 1/4 x 80								
			...			JOIST -								
FORE AND AFTERS	{	Number	...											
		Spacing	...											
		Unsupported Lengths	...											
		Scantling* and Sketch	...											
HATCH COVERS	{	Number	...											
		Spacing	...											
		Unsupported Lengths	...											
		Scantling* and Sketch	...											
HATCH COVERS	{	Material	...	STEEL	HEAVY CAST	STEEL	STEEL	STEEL	STEEL					
		Thickness	...	40	COVER.	40	40	40	40	40				
		How fitted	...	HINGED	HINGED	HINGED	HINGED	HINGED	HINGED	HINGED				
		Bearing Surface	...	W.T.	W.T.	W.T.	W.T.	O.T.	O.T.	O.T.				
Spacing of Cleats	3/4" Toggles	4-3/4"	7/8" Toggles	4-3/4"	7/8" Toggles	7/8" Toggles					
Number of Tarpaulins...	@ 24"	Toggles.	@ 24"	Toggles.	@ 18"	@ 18"					
*Are wood fore and afters steel shod at all bearing surfaces? Are battens and wedges efficient and in good condition? Are tarpaulins in good condition and in accordance with rule requirements? Are lashings provided in accordance with rule requirements?														

Particulars of any special features:— Recommended validity of Certificate - 12 months.

