

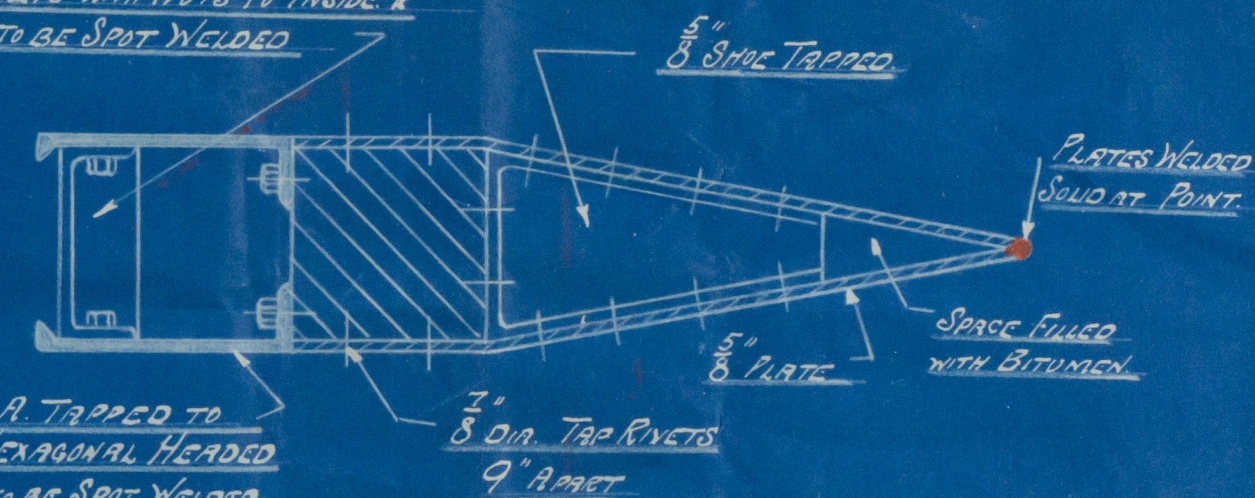
Hand-drawn diagram of a mechanical assembly, likely a propeller or shaft component, with the following labels:

- 1/2 PLATES (pointing to the upper plate)
- Full CORNERS (pointing to the rounded ends)
- PROPS CUT SHORT (pointing to the left end of the shaft)
- 3/4 3/8" ANGLE (pointing to the lower plate)
- 3/4 3/8" ROD ANGLE (pointing to the central shaft)
- PLATES SET IN (pointing to the lower plate)

DETAIL OF BOX RUDDER & FINS ON RUDDER POST

SCALES =  $\frac{1}{2}$ " &  $\frac{1}{2}$ " = 1 FOOT.

SCALE =  $1\frac{1}{2}" = 1\text{ FOOT}$



## LIFTING HOLES

4-1" DIA. TUBES THRU RUDDER & MADE  
WATER TIGHT IN APPROVED POSITION TO  
SUIT STOCK PALM SHACKLE FOR LIFTING.  
RUDDER TUBES TO HAVE SCREWED PLUGS.

002853-002857-0102



"  
City of Lyons  
"

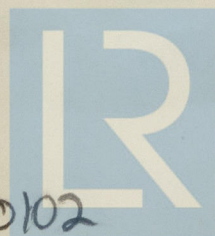
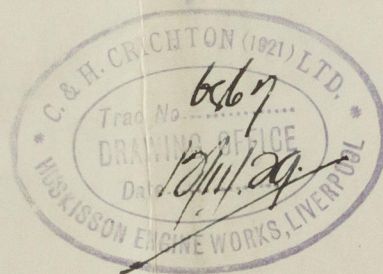
Proposed Fair plates and  
Box Room

13/11/29

S.S. City of Lyons

LIVERPOOL

Report No. 96348



© 2021

Lloyd's Register  
Foundation

002853-002857-0102