

NOTED & RETURNED  
NOV 24 1913  
CAMMELL, LAIRD & Co. Ltd  
BIRKENHEAD.

## STERN FRAME & RUDDER.

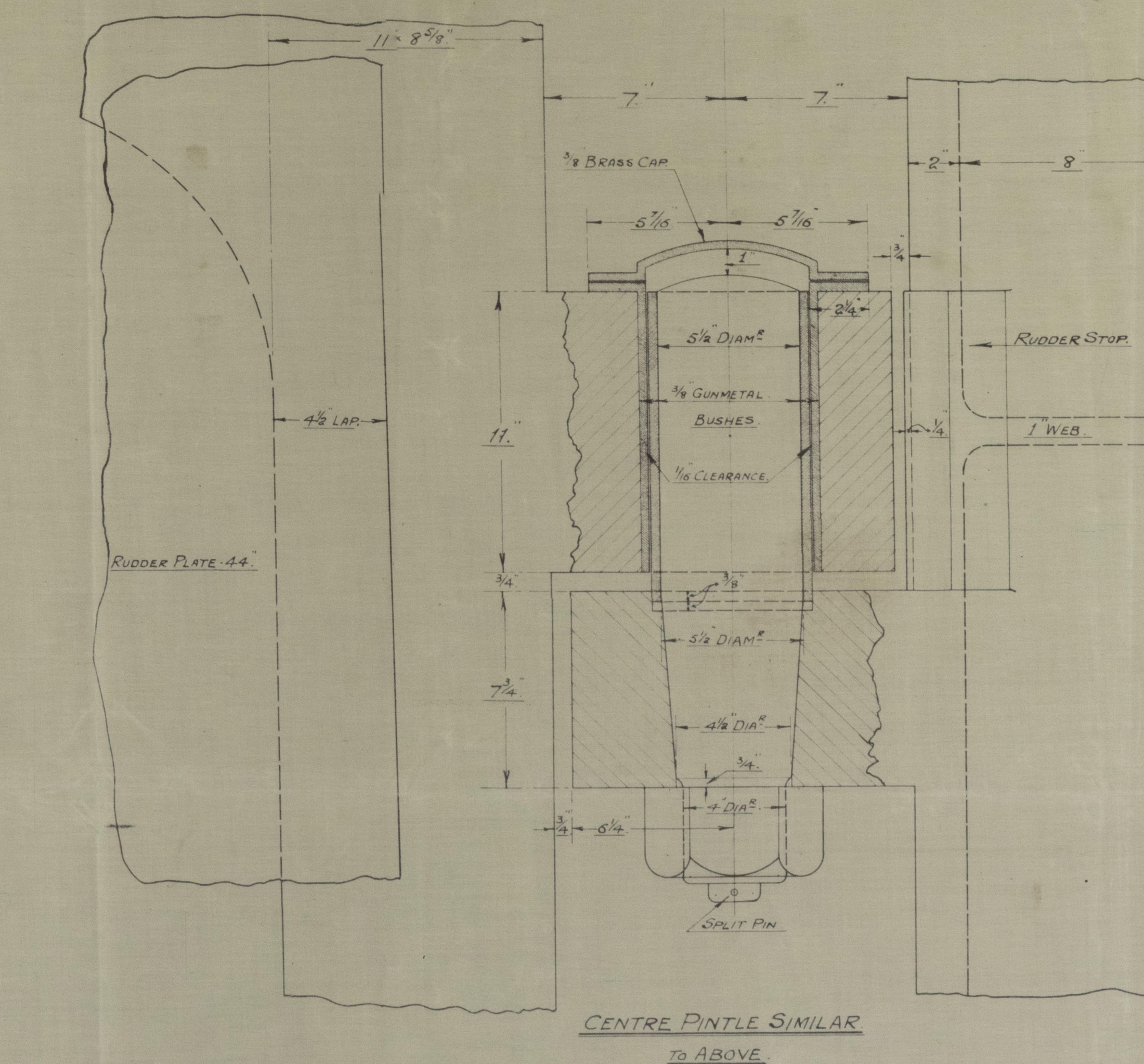
SCALE  $\frac{3}{4}$  INCH = ONE FOOT.

NOTE.

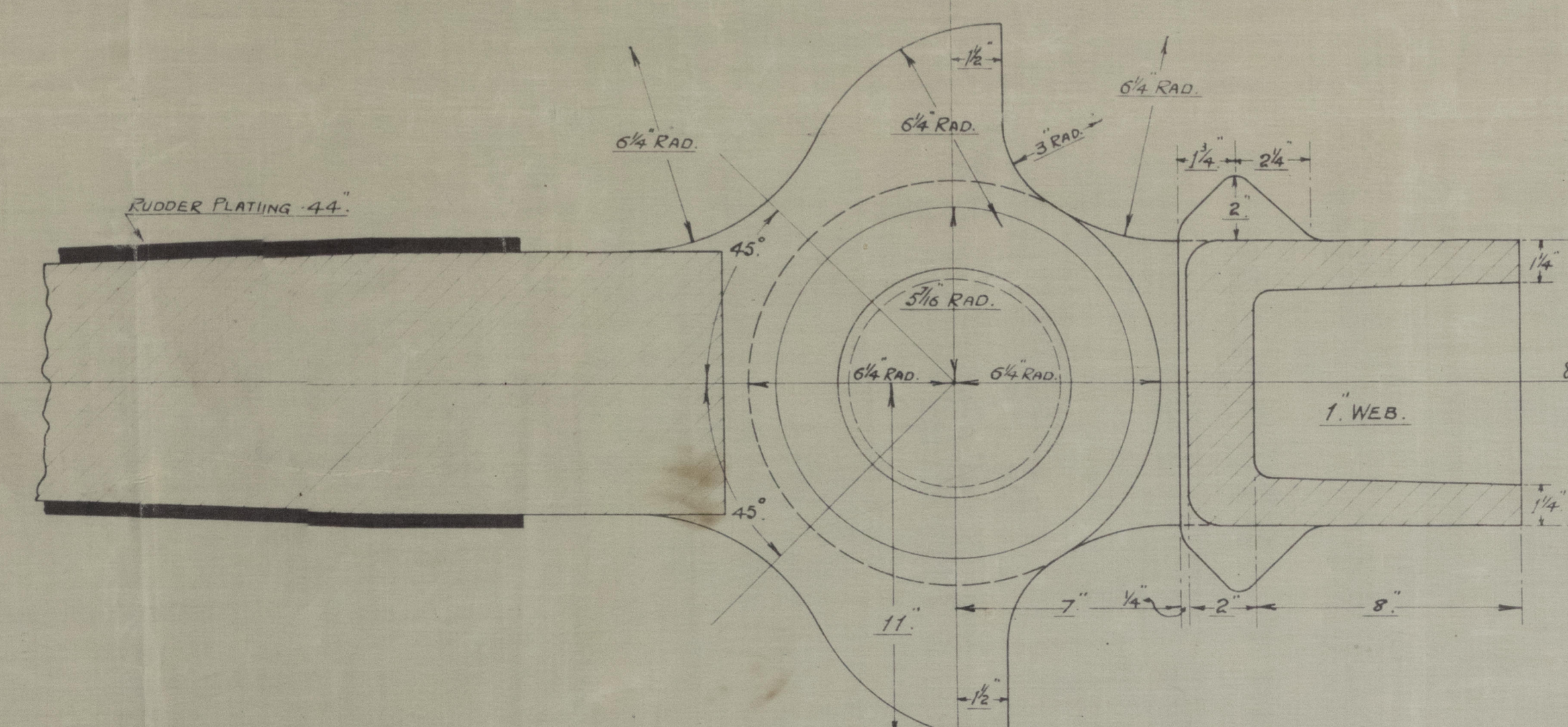
TOTAL AREA OF RUDDER ABAFT CENTRE LINE OF PINTLES = 97.22 sq ft

& CENTRE OF GRAVITY " " " " " = 3.621 FT

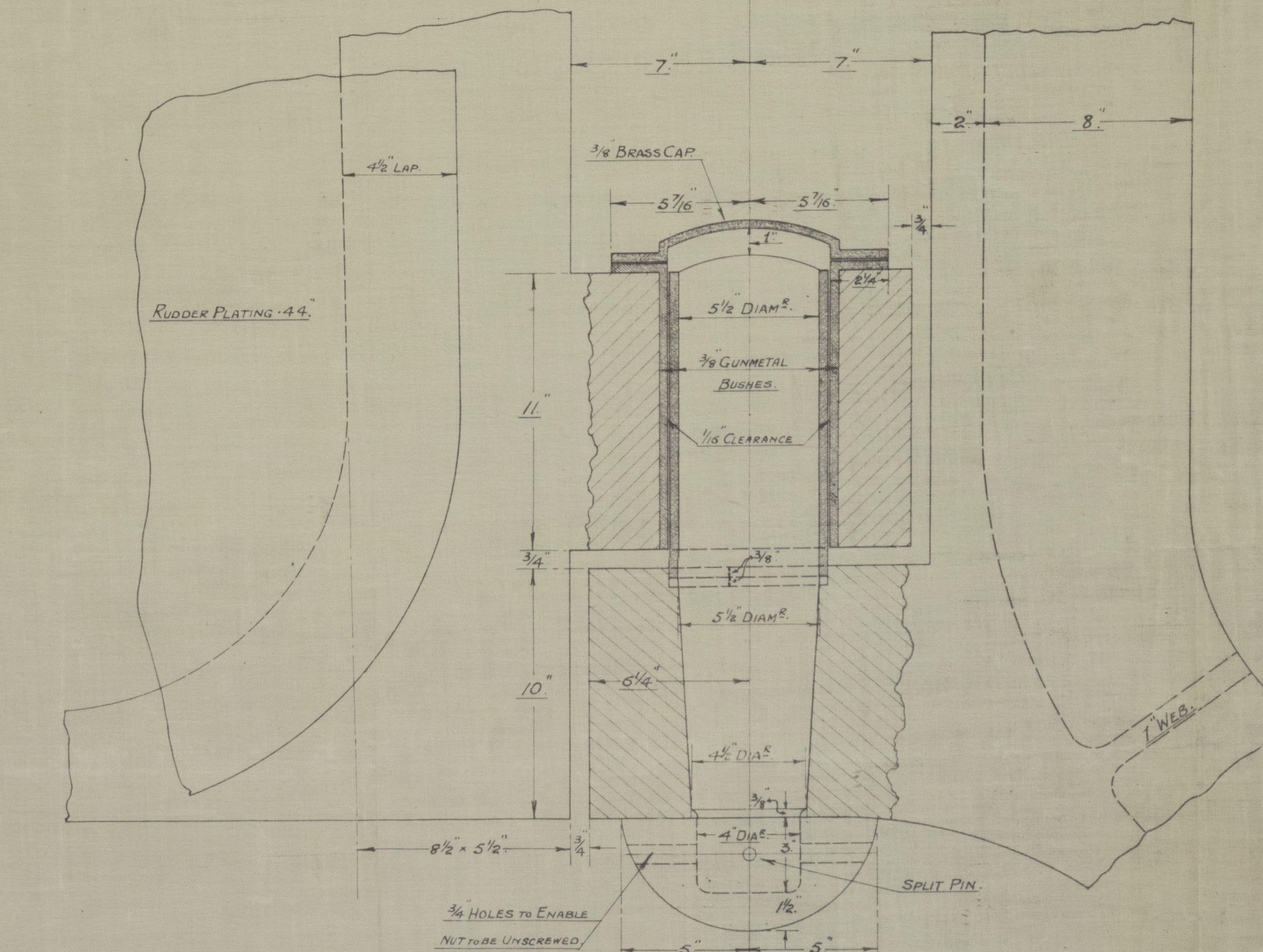
SPEED OF SHIP = 18 KNOTS.



CENTRE PINTLE SIMILAR  
TO ABOVE.

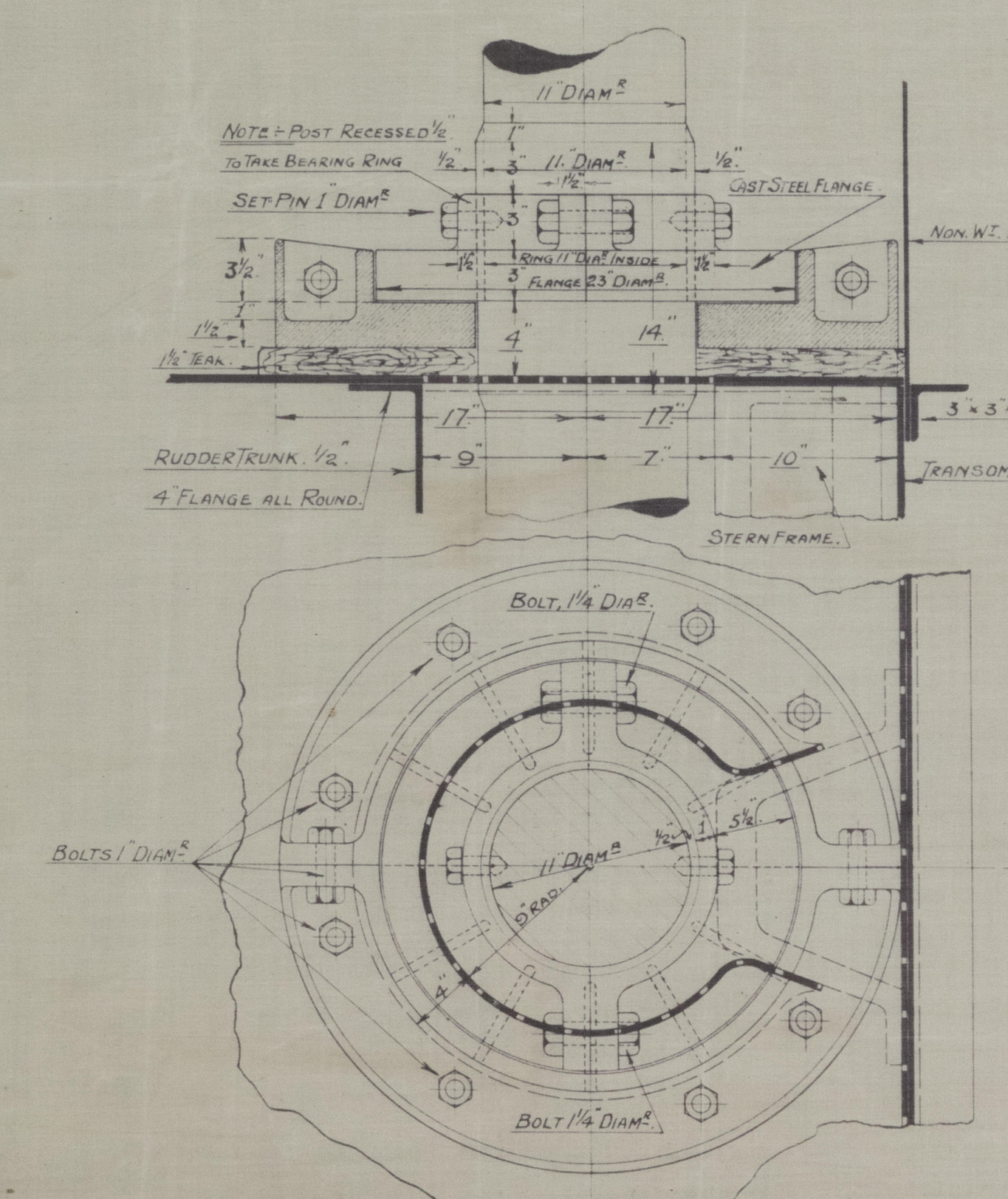


DETAIL OF TOP PINTL  
SCALE 3" = 1 Ft.

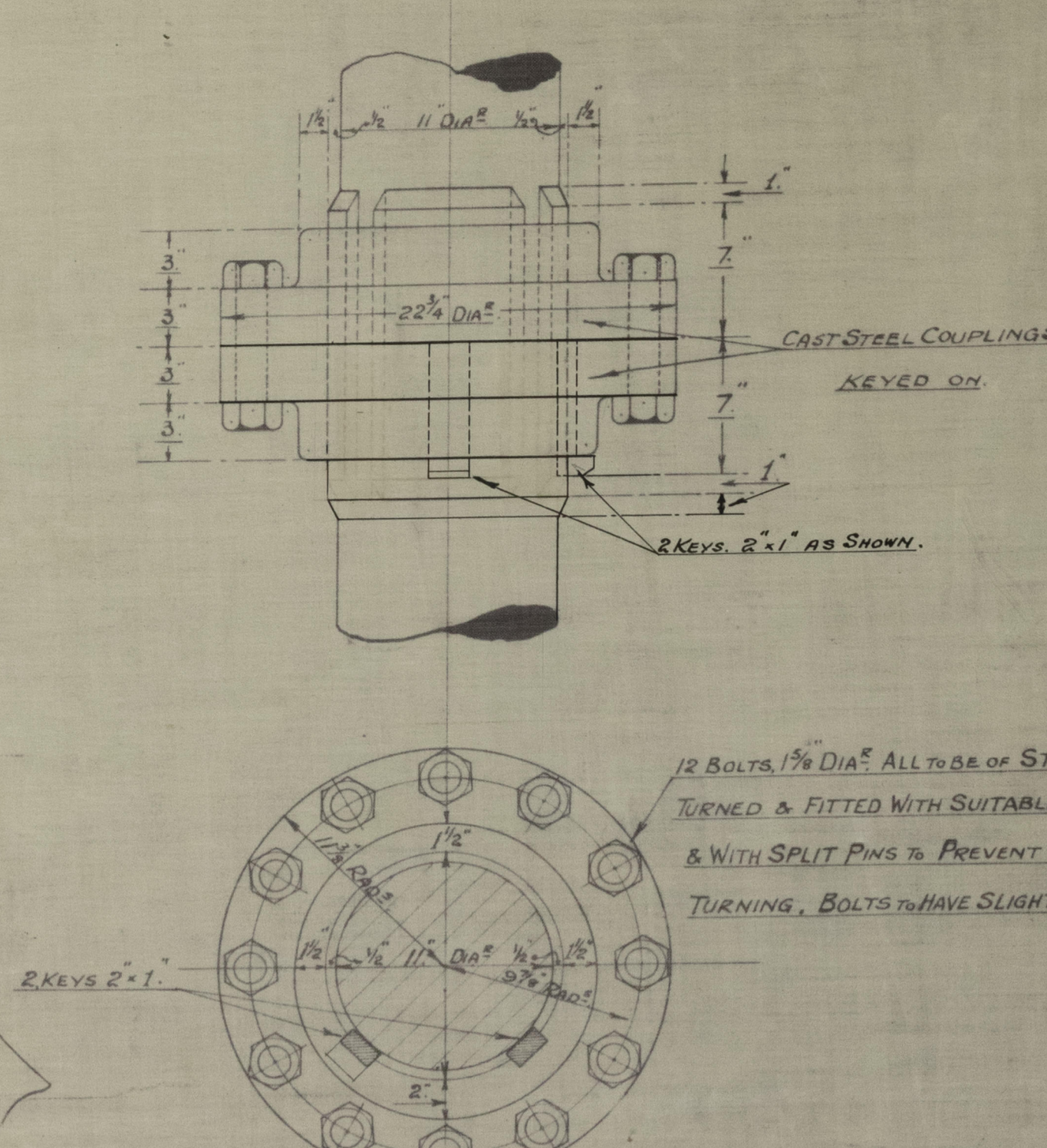


DETAIL OF BOTTOM PINTLE

SCALE 3" = 1 FT

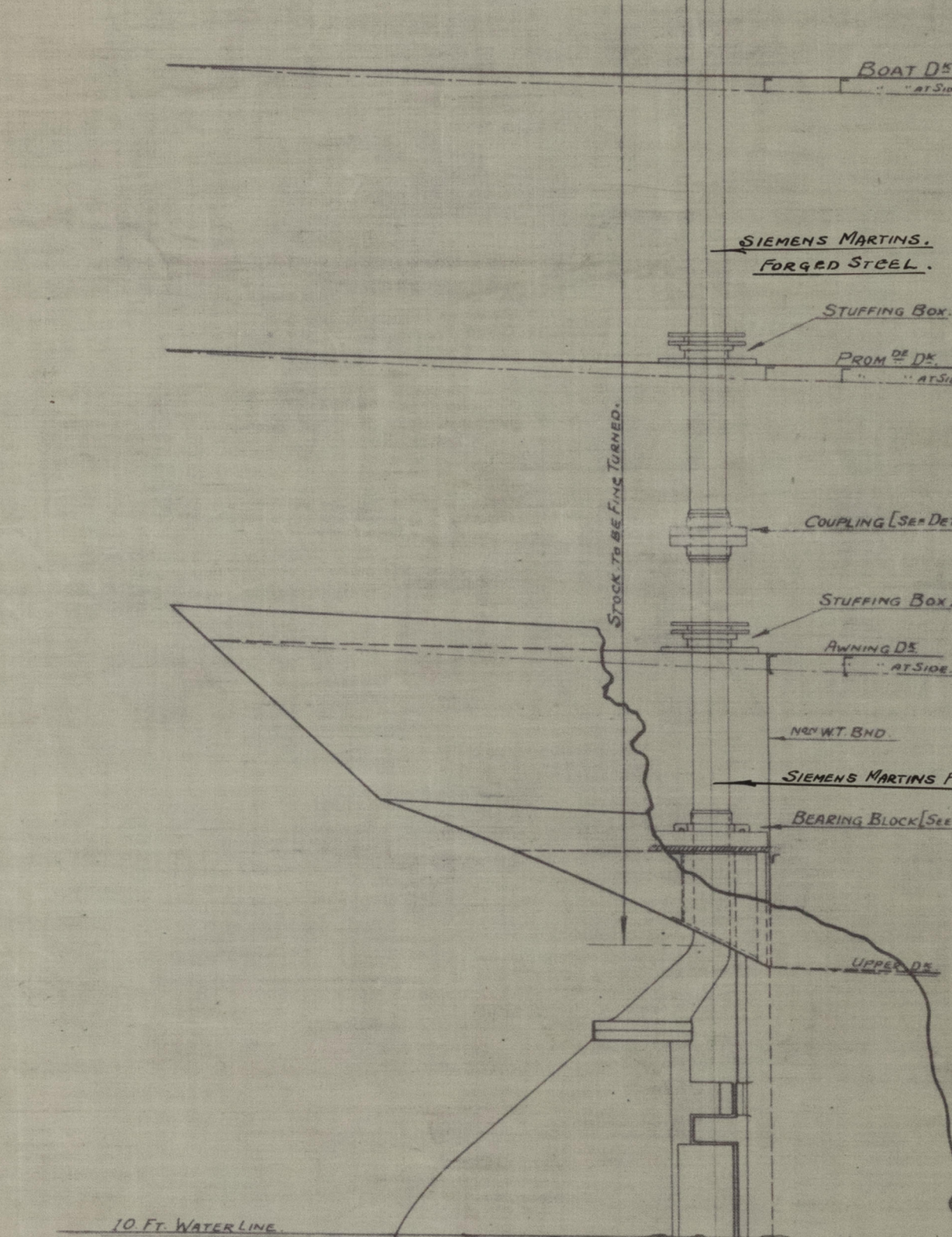


DETAILS OF CAST BRASS BEARING BLOCK



DETAIL OF COUPLING ON RUDDER POST

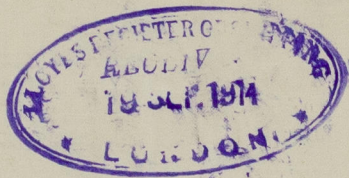
SCALE  $1\frac{1}{2}'' = 1 \text{ FT.}$



ELEVATION SHOWING POSITION OF COUPLING, BEARING BLOCK & STUFFING BOXES

SCALE  $\frac{1}{4}'' = 1 \text{ FT.}$





002853-002857-0065



© 2021

Lloyd's Register  
Foundation



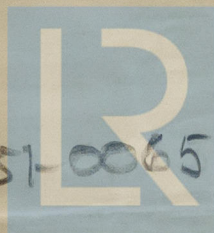
*C. C. C.*

*807-2*

*Stewframe mudda*



002853-002851-0065



© 2021

Lloyd's Register  
Foundation