

Nº 801 & 2

CAST STEEL PROPELLER BRACKETS ONE OFF TO EACH NUMBER

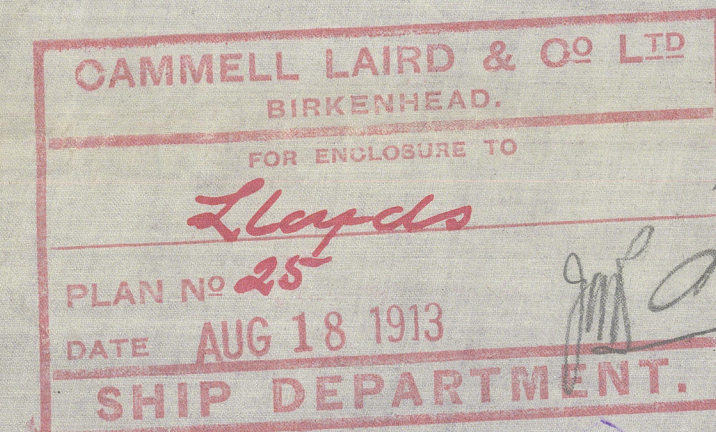
28.8.13 SCALE 1 INCH=ONE FOOT

Diameter of Propeller shafts $10\frac{1}{2}$ " Approved per Sec's letter of 7 Aug 13

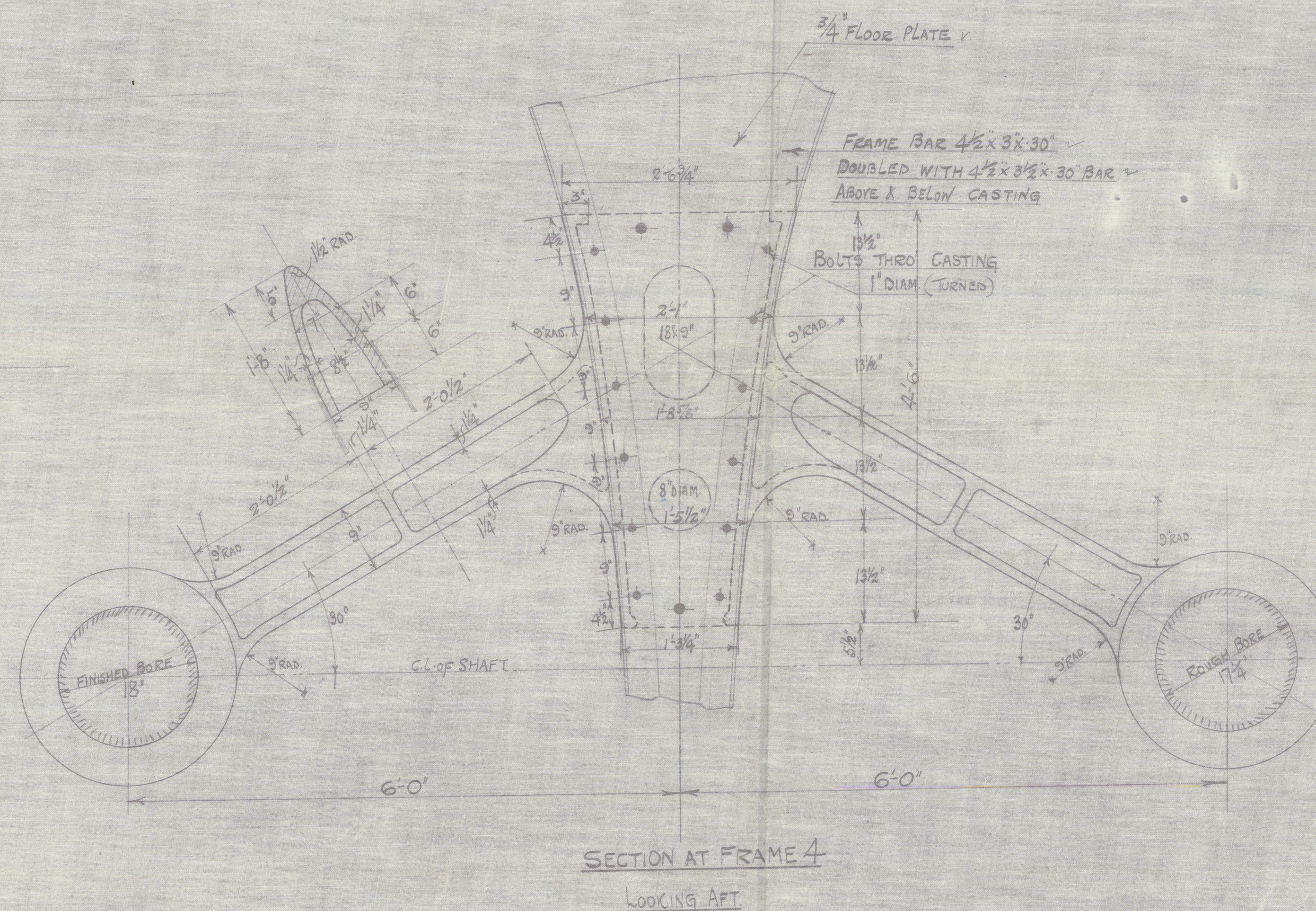
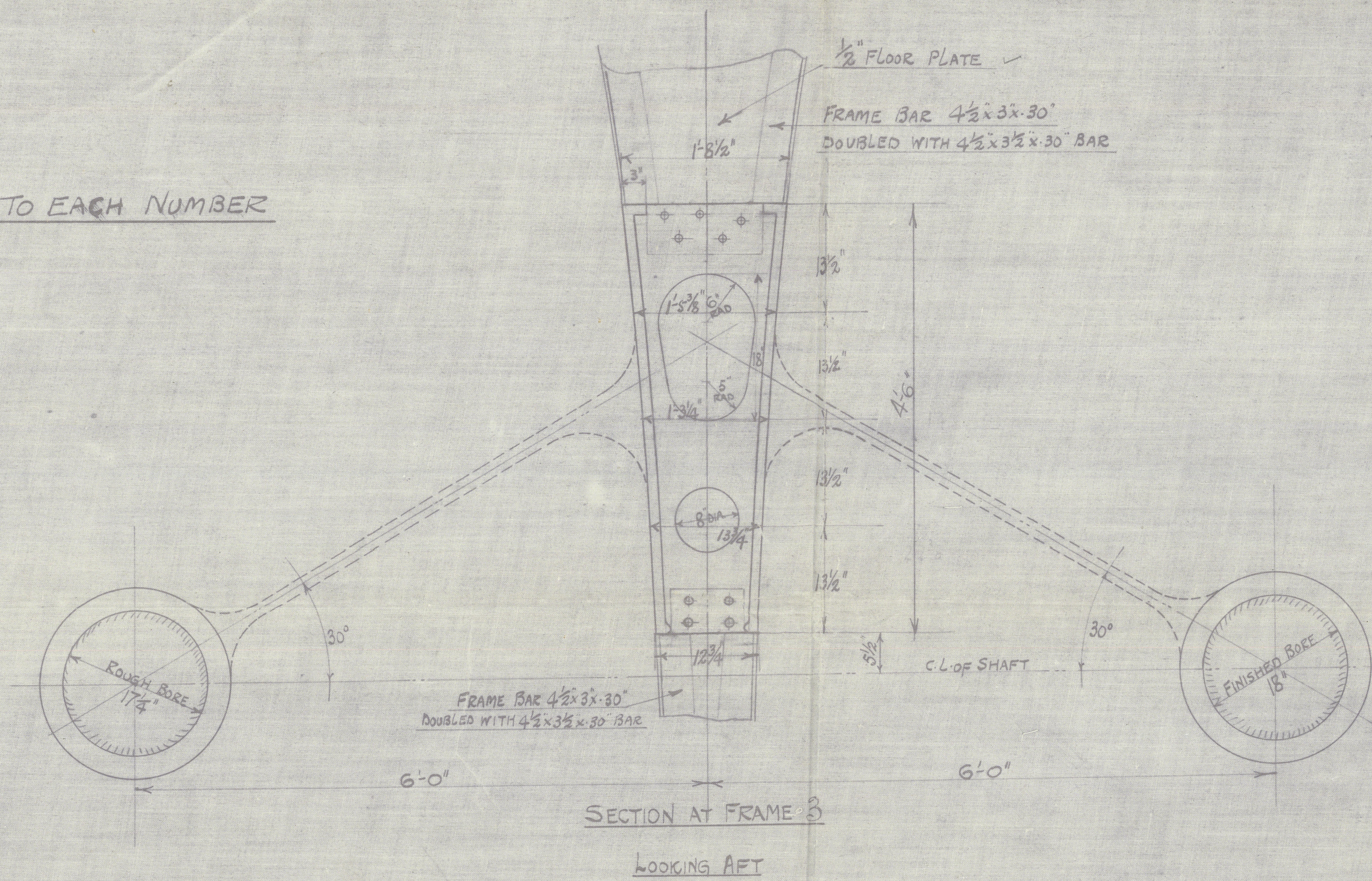
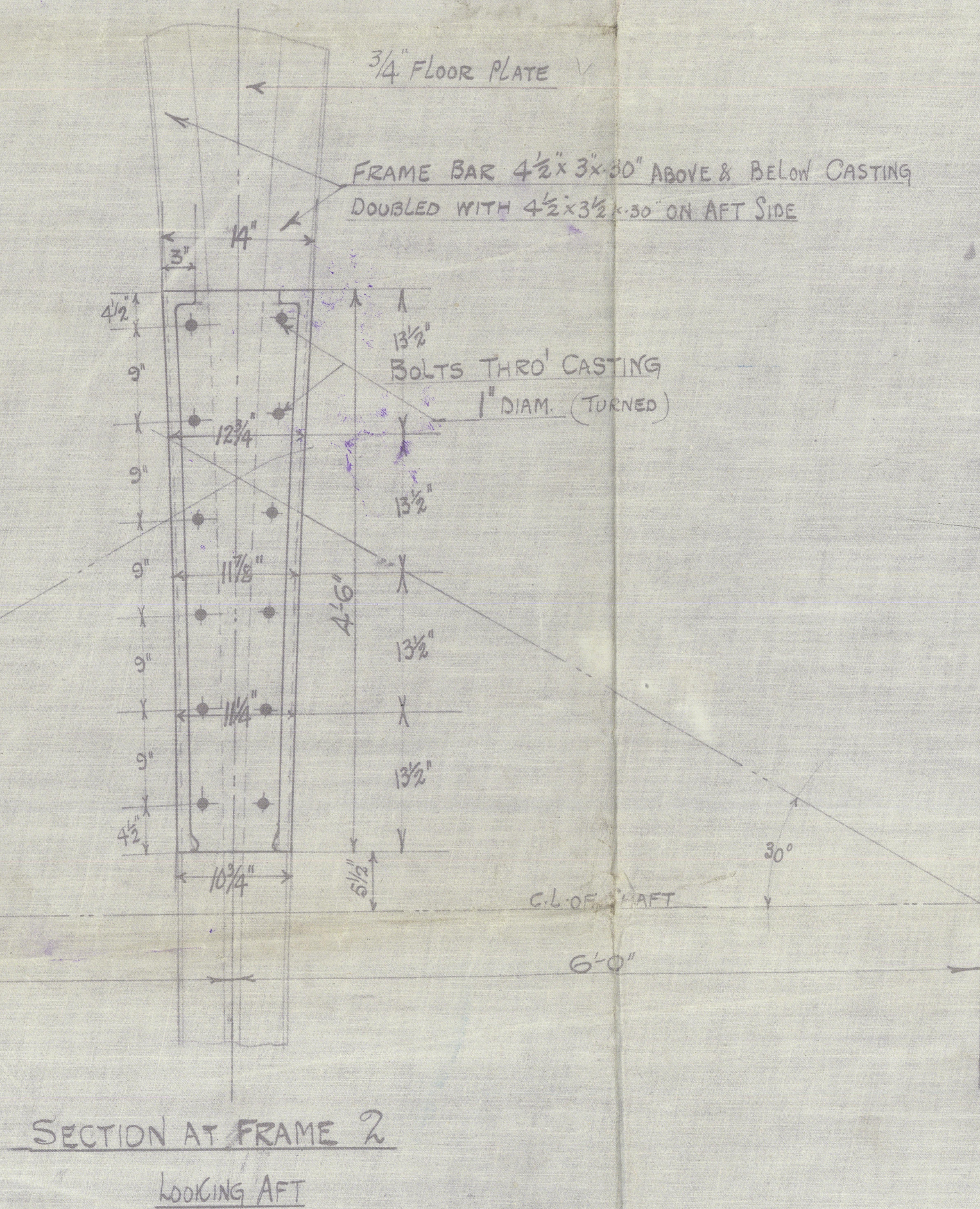
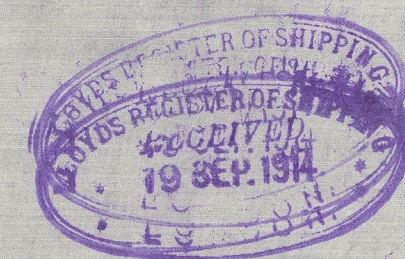
CASTING TO BE TO THE TESTS & REQUIREMENTS OF LLOYDS

RIVET HOLES TO BE DRILLED

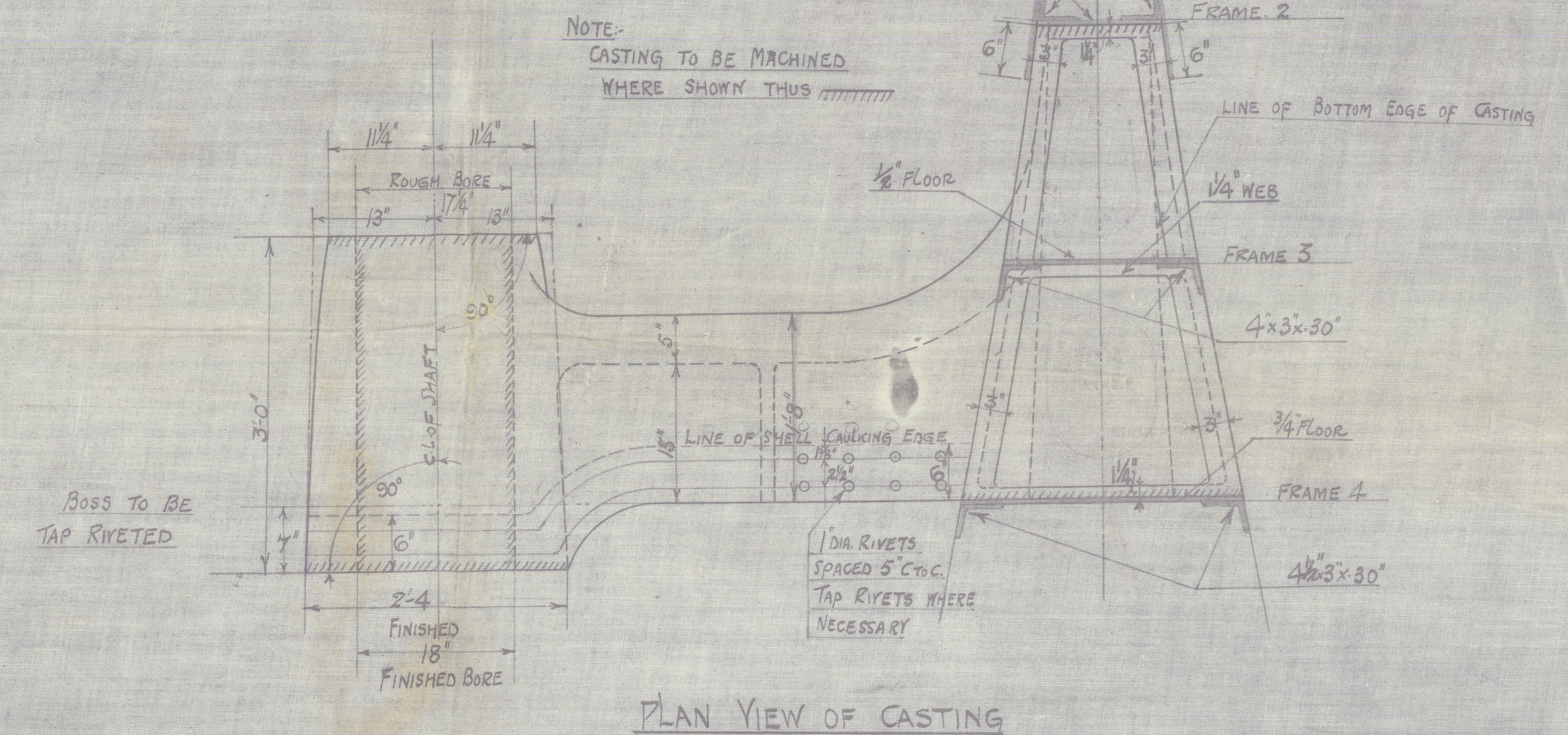
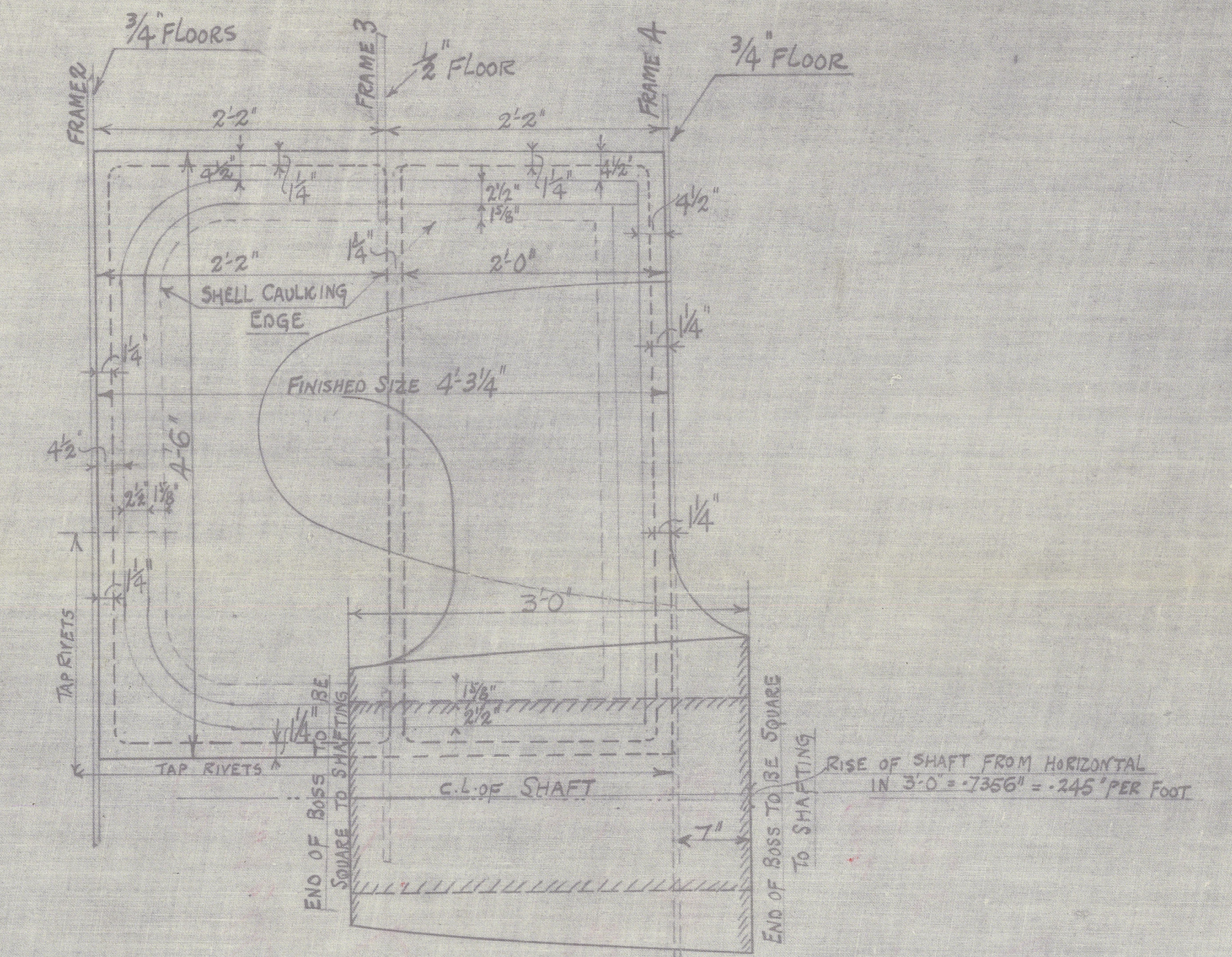
BOLT HOLES AND TAP RIVET HOLES NOT TO BE DRILLED



NOTED & RETURNED
AUG 28 1913
CAMMELL LAIRD & CO LTD
BIRKENHEAD



ELEVATION OF CASTING



C.F.
25/8/13

T Nº 9

801/2
Cast steel
propeller brackets

Propeller Brackets.

C. Cairn Hecla 801/2.

801.

S.S. Ciudad de Buenos Aires

Rev Ppt. 72445.

802

S.S. Ciudad de Monte Video

Rev Ppt 72445.



002853-002857-0061

© 2021

Lloyd's Register
Foundation