



REPORT OF SCANTLINGS OF UNCLASSIFIED IRON AND STEEL SHIPS.

Form L.L. 9.

Ship's Name "Corfu" Official No. or Port of Registry When built 1931
Builder's Name and No. A. Stephen & Sons Ltd 534 Date of Survey June 1931
State if Surveyed afloat, in dry dock, or when Building at Glasgow State of Iron or Steel Steel

(3177) Wt 6704/4126 1000 7/29 H. J. R. & L. Ltd. Gp 145

Length on Deck, per Lloyds 1885 Rules.	520.31
Length on L.W.L.	518.5
Breadth moulded.	71.0
Depth moulded to Upper C deck.	46.0
NUMERALS FOR LLOYDS 1885 RULES.	
Half-Breadth [moulded]	35.5
Depth from upper part of Keel to top of Upper deck Beam at M.L.	46.33
Girth of Half Midship Frame from M.L. to top of Beam at side	74.5
1st Number	159.33
Deduct	7.00
1st Number [if a 3-Decked Vessel]	152.33
Length on Deck, as per Rule	520.31
2nd Number	792.58
Proportions :—	
Breadth to Length	518.5/520.31 = .979
Depth to Length.	46.0/518.5 = .0887
" " 518.5/37.43 m. " "	14.01
" " 520.31/37.43 m. " "	13.94

NOTE.

- (1) Indicate by an asterisk * the parts that have been drilled; and if not drilled, report as directed by paragraph 3, Circular 1416.
- (2) All thicknesses of steel to be stated in twentieths, and iron in sixteenths of an inch.
- (3) All doublings fitted to be clearly indicated stating if their butts are efficiently strapped and giving particulars of riveting.

FRAMING.	In Machinery Spaces.	Outside Machinery Spaces.			In way of R.Q. Dk. or	CONDITION.
		For	At Ends.	In Peaks.		
Section and Scantlings :—	To 6" 12x3 1/2 x 45 B a (B.R.) Dk. 12x3 1/2 x 54 B a (B.R.) 10x3 1/2 x 40 B a (B.R.) from 8 to 6 Dks 8x3 1/2 x 54 B a (B.R.)	For 185' 10" fore of 8" 12x3 1/2 x 45 B a to 4 Dk 10x3 1/2 x 40 B a to 6 Dk from 8 to 6 Dks 11x3 1/2 x 43 B a to 5 Dk 10x3 1/2 x 40 B a to 6 Dk	Fore end 12x3 1/2 x 42 B a to 4 Dk 10x3 1/2 x 40 B a to 6 Dk 4" x 4" x 50" on frame 100	Aft end 12x3 1/2 x 43 B a to 5 Dk 10x3 1/2 x 40 B a to 6 Dk	In Peaks 10x3 1/2 x 40 B a to 6 Dk 8x3 1/2 x 44 B a frames 177-179 in.	
Frame :—						
Reverse Frame :—						
Spacing	36"	36"	24"	36"	24"	new
Height of Reverse bars	To 6" Dk (B.R.)			1 1/2" to C Dk		
Total depth of girder	14 1/2" (B.R.)					
Web Frames.	33" 50" plating 5x3 1/2 x 54 B a double 12x3 1/2 x 45 B a frame					
Section and Scantlings						new
Spacing	1 Port; 1 Std.					
Height	To 6" Dk					
Side Stringers (Associated with Web Frames).			Ranking arrang. in fore hold 3 1/2 x 3 1/2 x 14 B a 14 B a plate F 4x3 1/2 x 14 B a			new
Section and Scantlings						
Number			2			
Floors (ordinary),						
Depth and thickness						
Height at bilges						
Beams.	Y Deck.	E Deck.	D Deck.	C Deck.	B Deck.	A Deck.
Section and Scantlings	4x3 x 3 1/2 x 42 channel 4x3 x 3 1/2 x 30 at 1/2"	8x3 x 3 1/2 x 30 channel 4x3 x 3 1/2 x 30 4x3 x 3 1/2 x 30 24" stem - 12 36" stem - 12-14 1/2 24" stem - 14 1/2 & 24"	8x3 x 3 1/2 x 42 channel 4x3 x 3 1/2 x 30 4x3 x 3 1/2 x 30 As for E Dk	4x3 x 3 1/2 x 42 channel 4x3 x 3 1/2 x 30 4x3 x 3 1/2 x 30 As for E Dk	4x3 x 3 1/2 x 42 channel 4x3 x 3 1/2 x 30 12x3 1/2 x 32 x 50 on 50 24" from stern - 12 36" - 12-135 54" - 152-176 48" - 176	6x3 x 3 1/2 x 42 5x3 x 3 1/2 x 30 B a at ends 36"
Spacing	36" from 116-141 24" from 141-176 24" from 176	24" stem - 12 36" stem - 12-14 1/2 24" stem - 14 1/2 & 24"	As for E Dk	As for E Dk	24" from stern - 12 36" - 12-135 54" - 152-176 48" - 176	
Pillars.	10" diam x 42" Tube 14" x 60" diam Tube	5 1/2" - 6 1/2" diam solid	3" - 5 1/2" diam solid	3" diam - 4 5/8" diam solid	3x2 1/2" - 3 1/2" x 3 solid	new
Section and Scantlings						
Spacing	12.0 - 15.0 ft.	10	10	10	10	
No. of rows	4	4	4	4	4	
Bulkheads.	Frame No.	Height.	State whether W.T. or non W.T.	Plating thickness.	Stiffeners, Section, Scantling and Spacing.	
	12	to D (m) Deck.	W.T.	26" 10' - 50" bottom	6x3 x 48 B a 24" to 50" from 1st Gen'l lat	
	29	to D Deck.	W.T.	26" - 50"	12x3 1/2 x 30 B a 24" to 30" from 1st Gen'l lat	
	41	to D Deck.	W.T.	26" - 43"	12x3 1/2 x 30 B a 24" to 30" from 1st Gen'l lat	
	68	to D Deck.	W.T.	26" - 44"	12x3 1/2 x 30 B a 24" to 30" from 1st Gen'l lat	

For continuation of Bulkheads" please see page 2. (Bulkhead scantlings approved on CM 22931/30)



© 2021

Lloyd's Register

Foundation

002853-002857-0057/2

Steel in twentieths of an inch.
Iron in sixteenths " "

Shearstrakes to be indicated and their widths and thicknesses stated.

Dimensions to be inserted.

The general condition of the vessel is new, and it is recommended that the ^{certificate} ~~freeboard~~ may remain in force for the period of four years.

Vessel inspected in dry dock 20-8-36 and found in satisfactory condition,
and considered seaworthy for the period recommended. JAC - 11/8/36 L. W. Shart

412-2418/36 *Wishart.*
24-8-36.
John 21/12

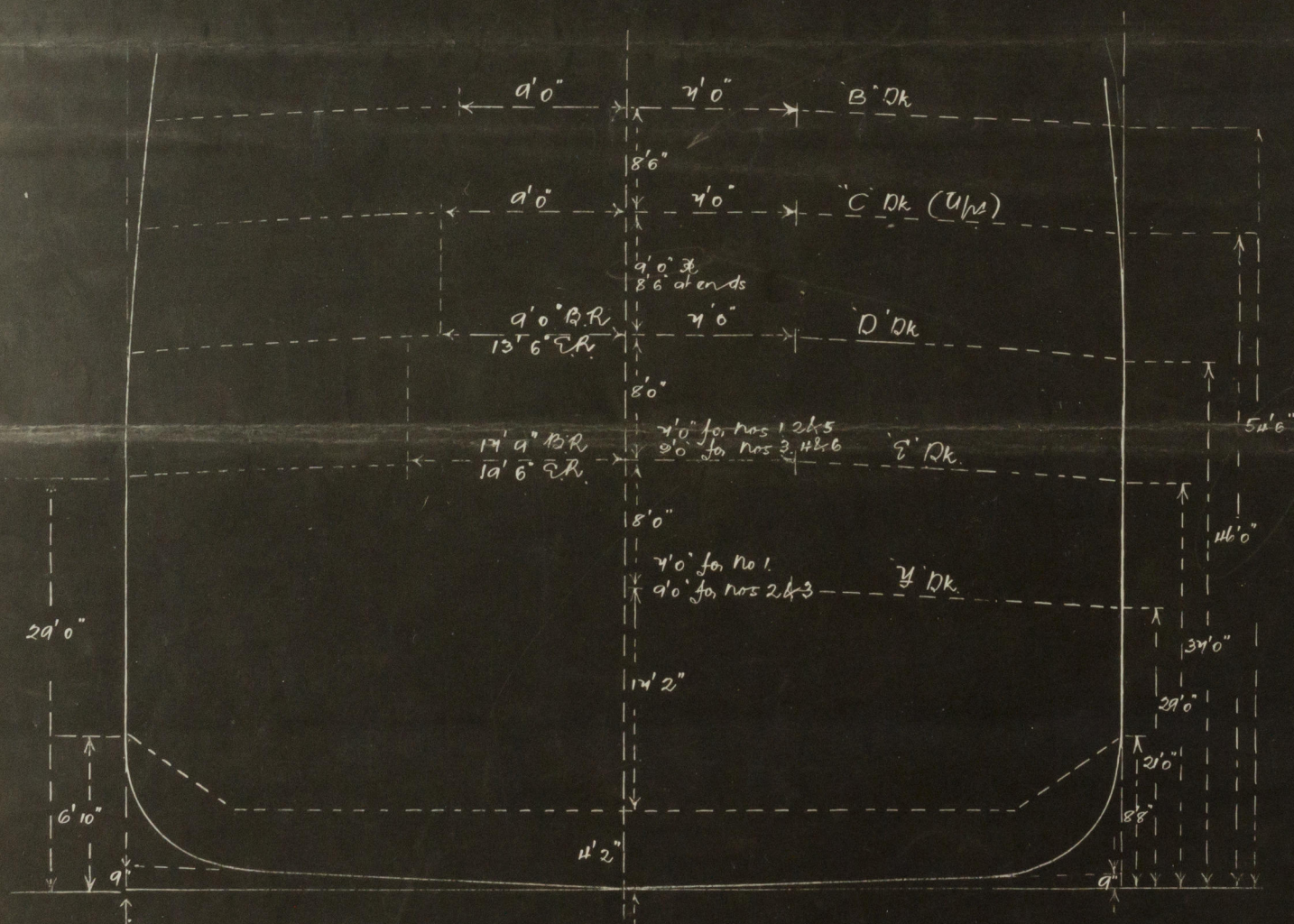
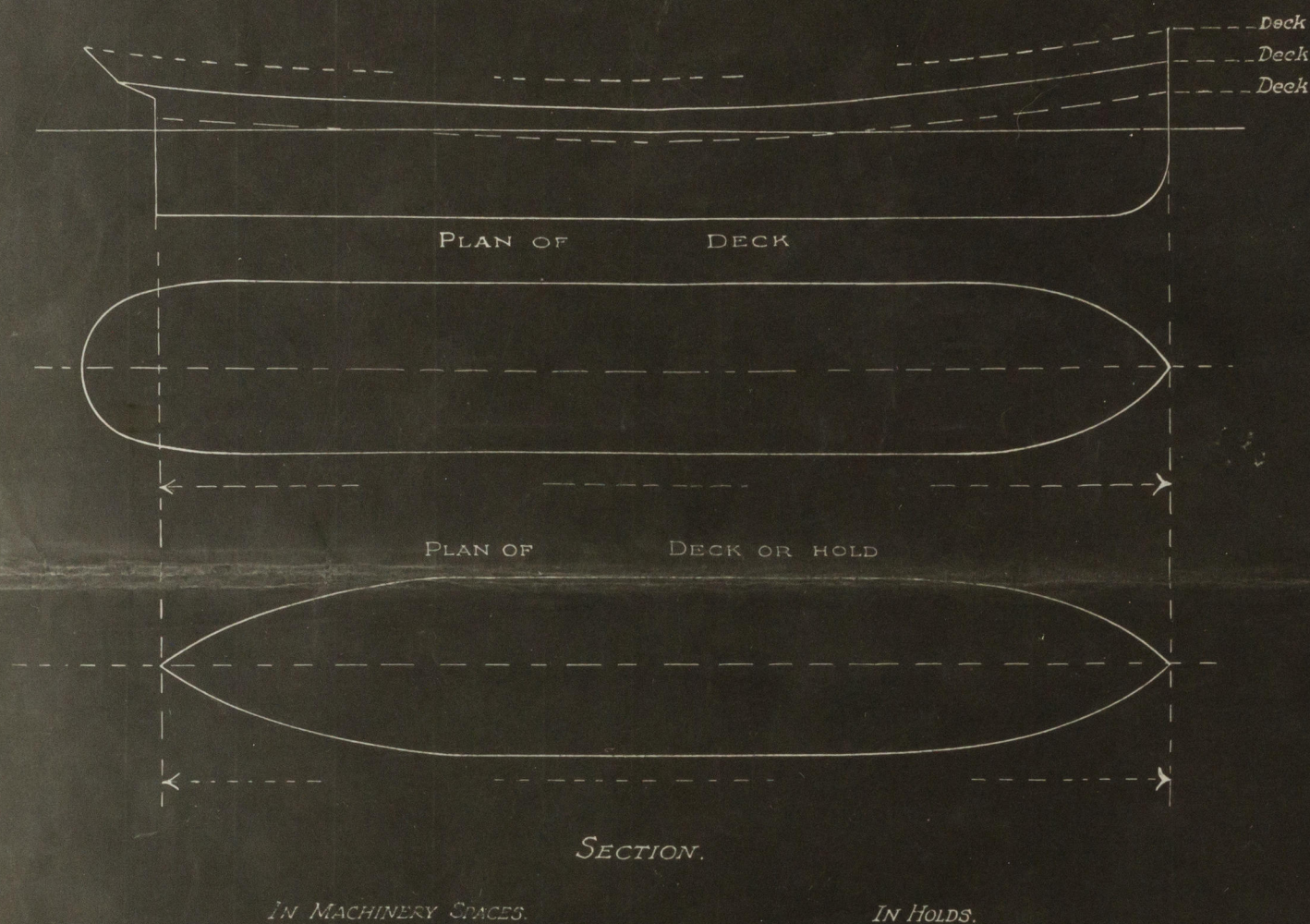


© 2021

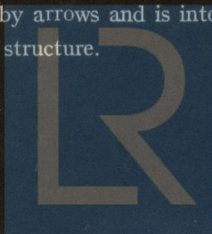
Lloyd's Register
Foundation

002853-002857-0057 3/2

The position and height of main bulkheads, web frames and partial bulkheads in holds and 'Tween decks; engine and boiler spaces; deep and peak tanks; deck erections, line of floors, tank top, &c., to be shown below with figured dimensions.



N.B.—This section is provided for the insertion of the dimensions indicated by arrows and is intended to include all decks forming an integral part of the ship's structure.



Lloyd's Register
Foundation