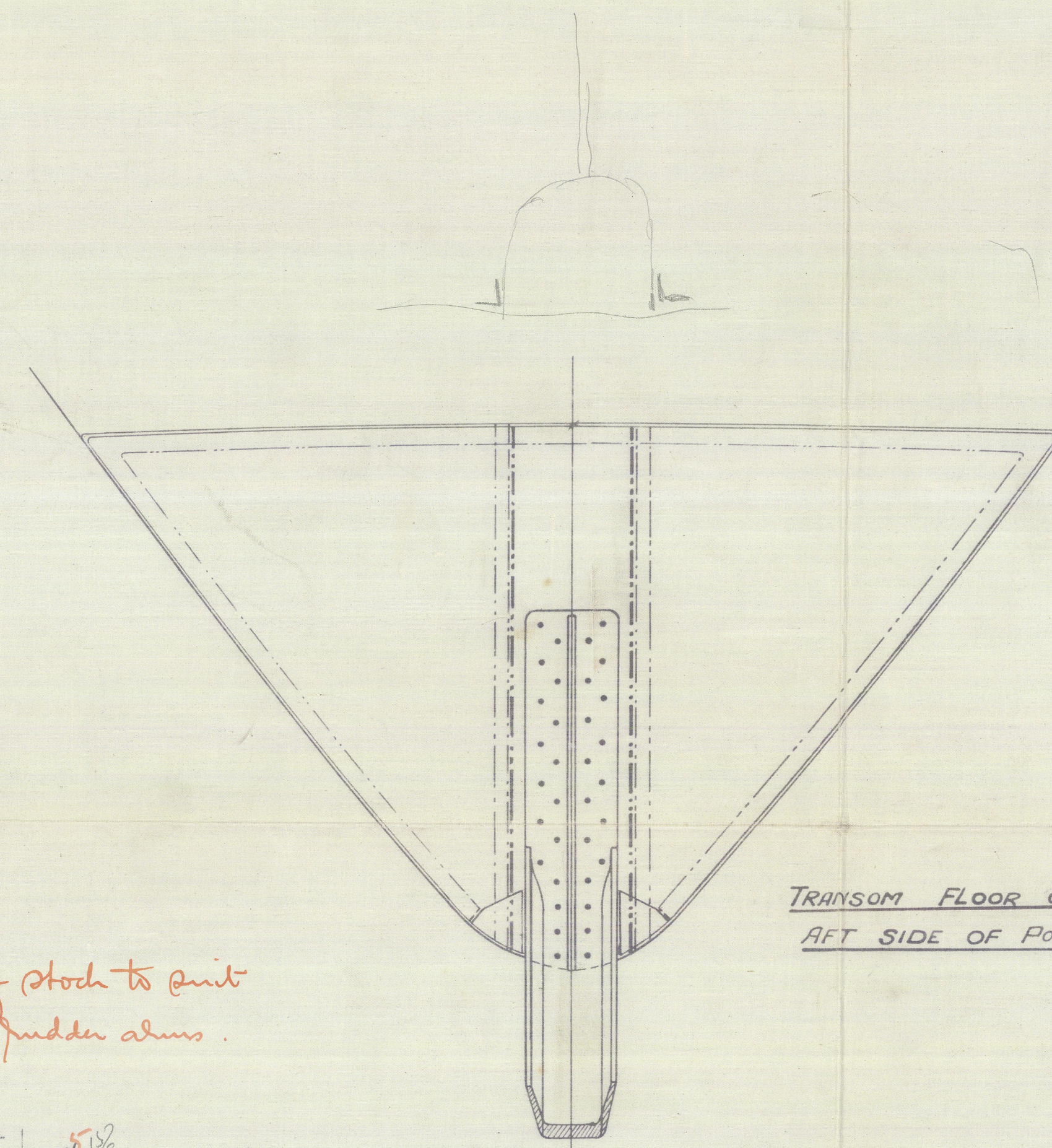
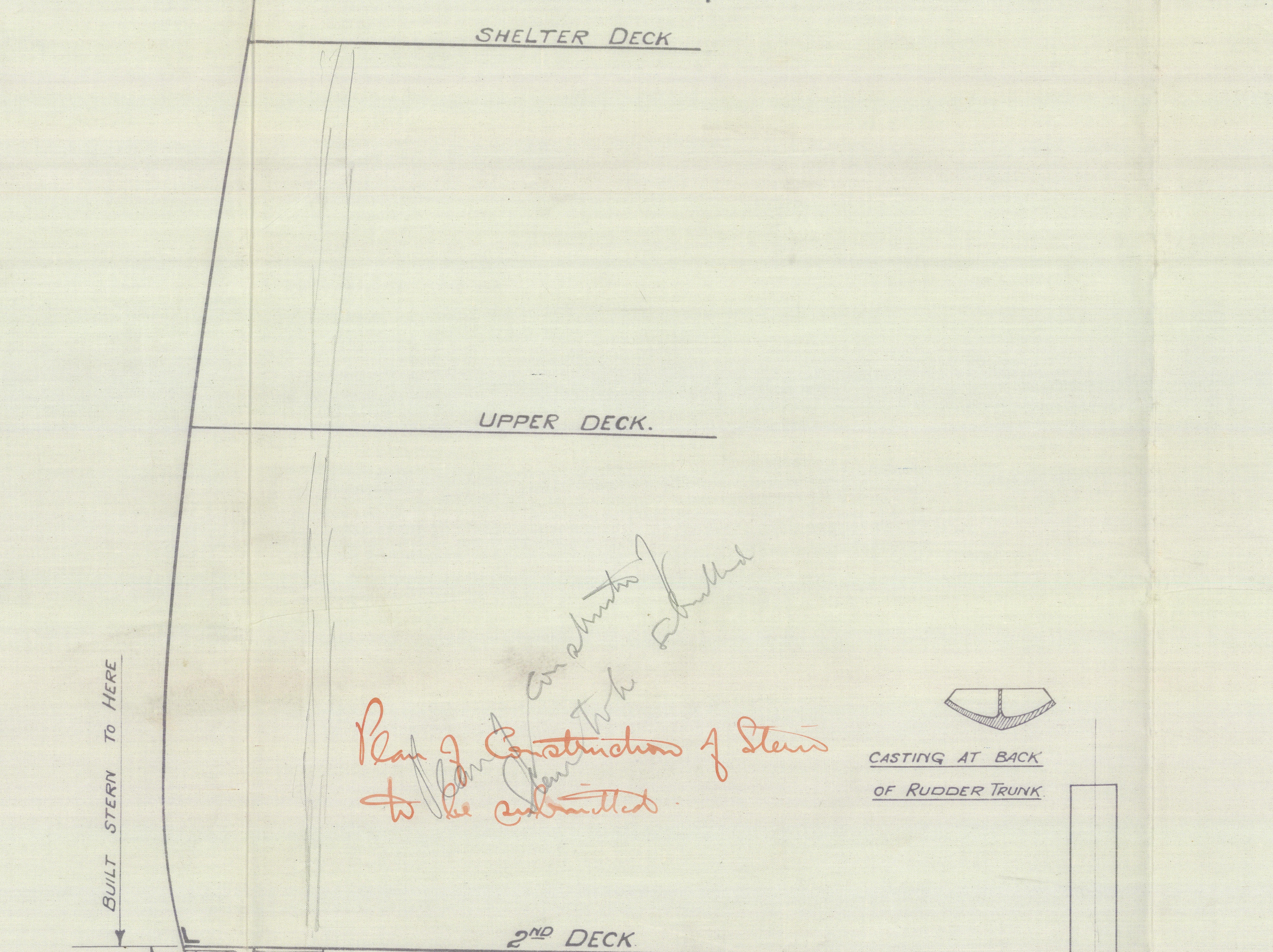


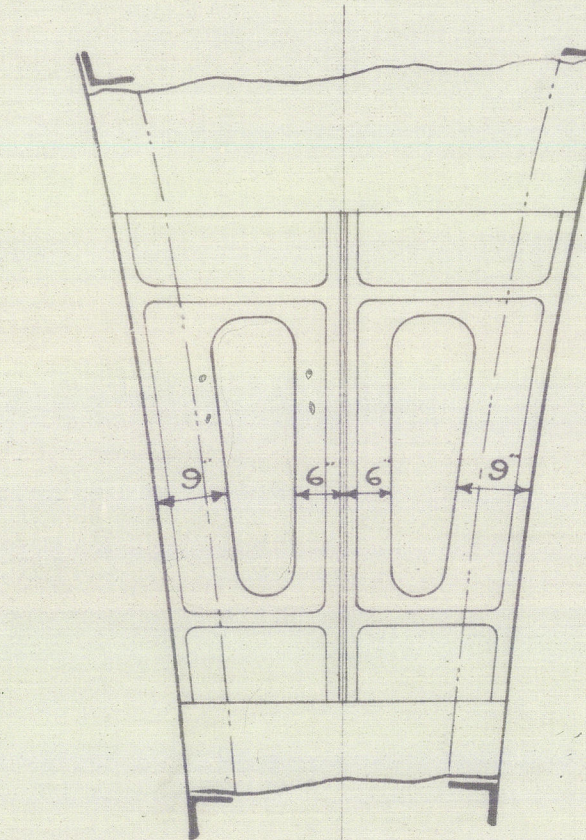
STERNFRAME, RUDDER & PROPELLER BRACKETS.

CARGO STEAMER 500'0" x 62'0" x 45'0"

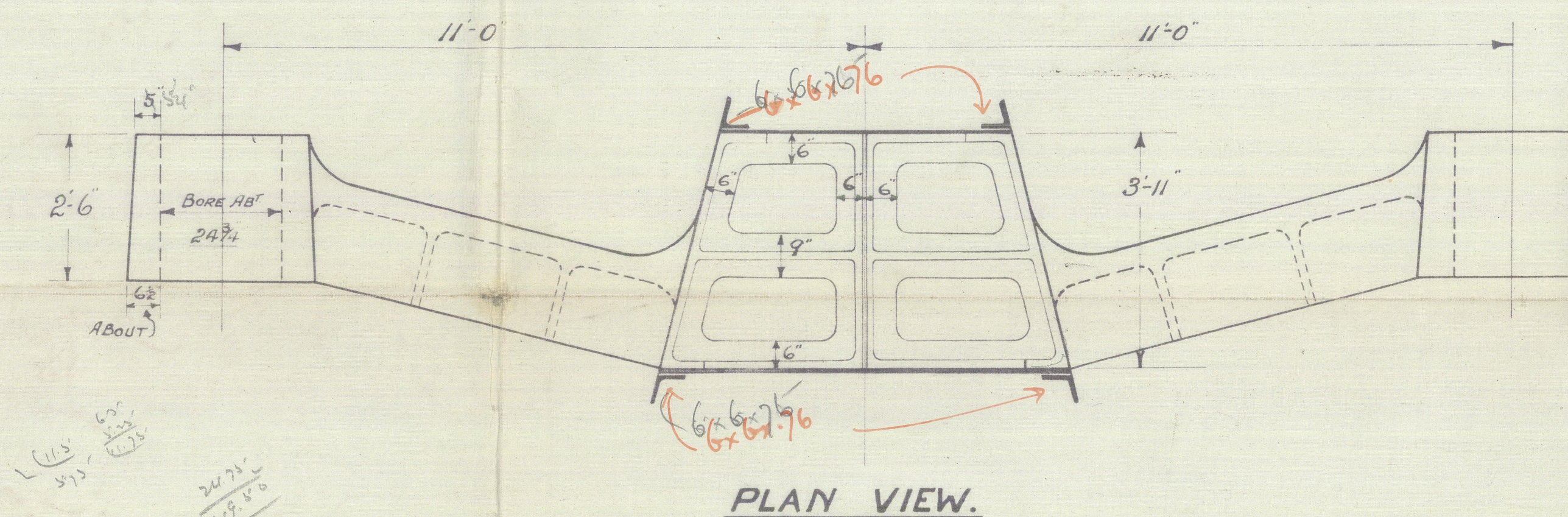
SCALE 2" = 1'00"



Plan of this frame to be submitted

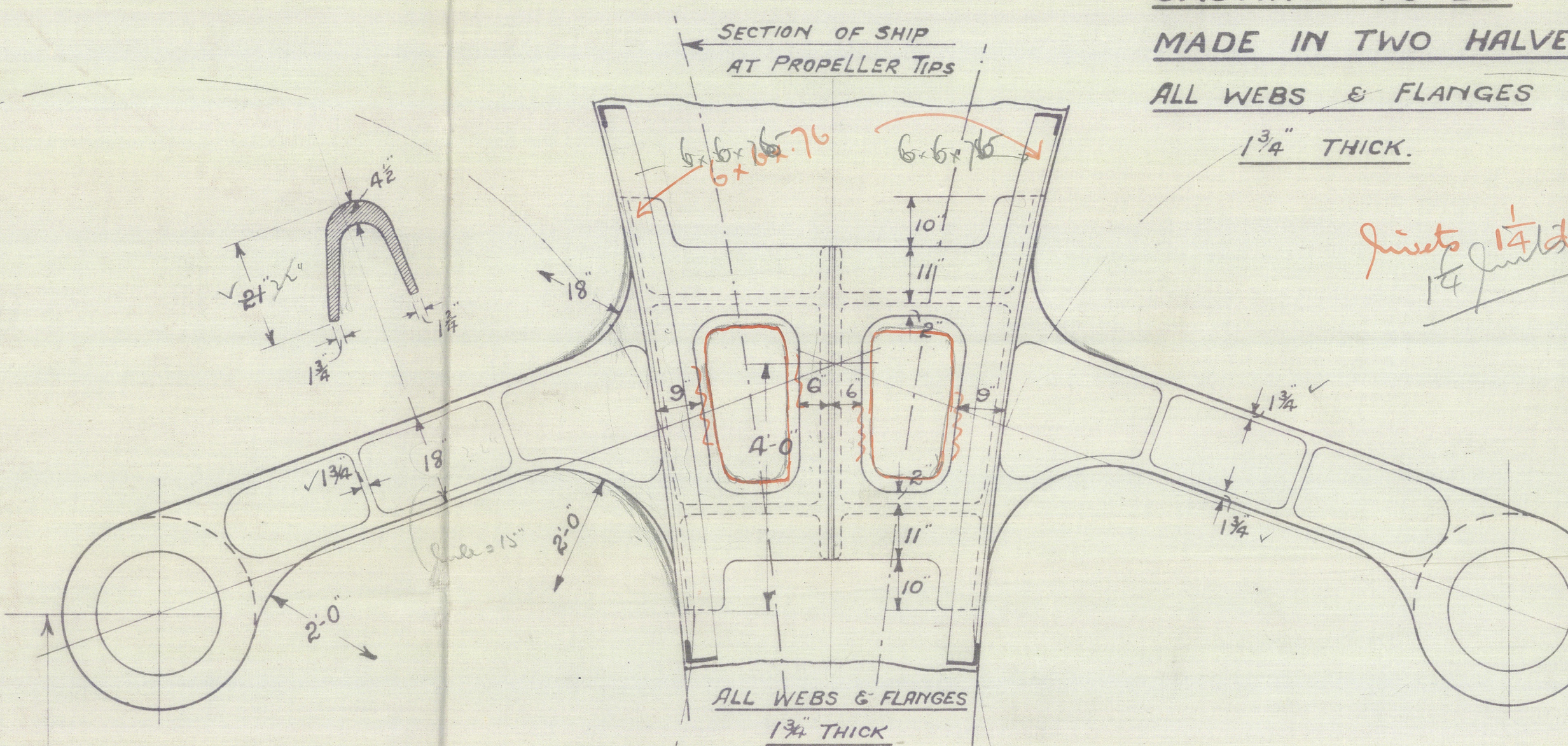


SECTION AT 6.

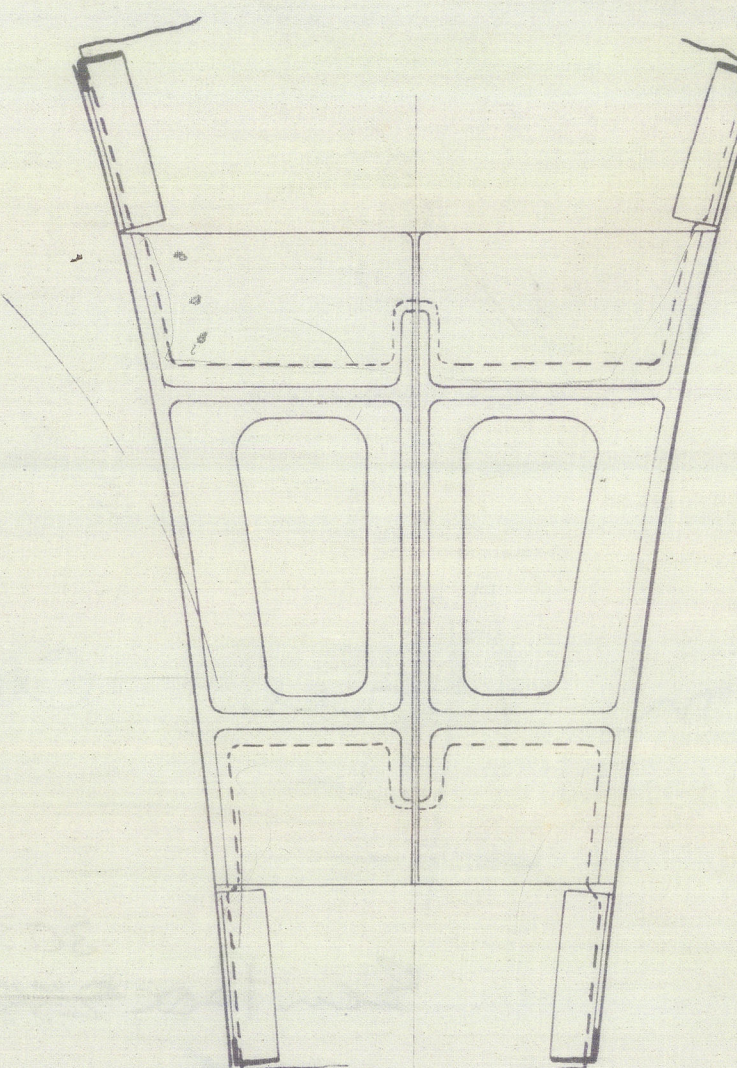


PLAN VIEW.

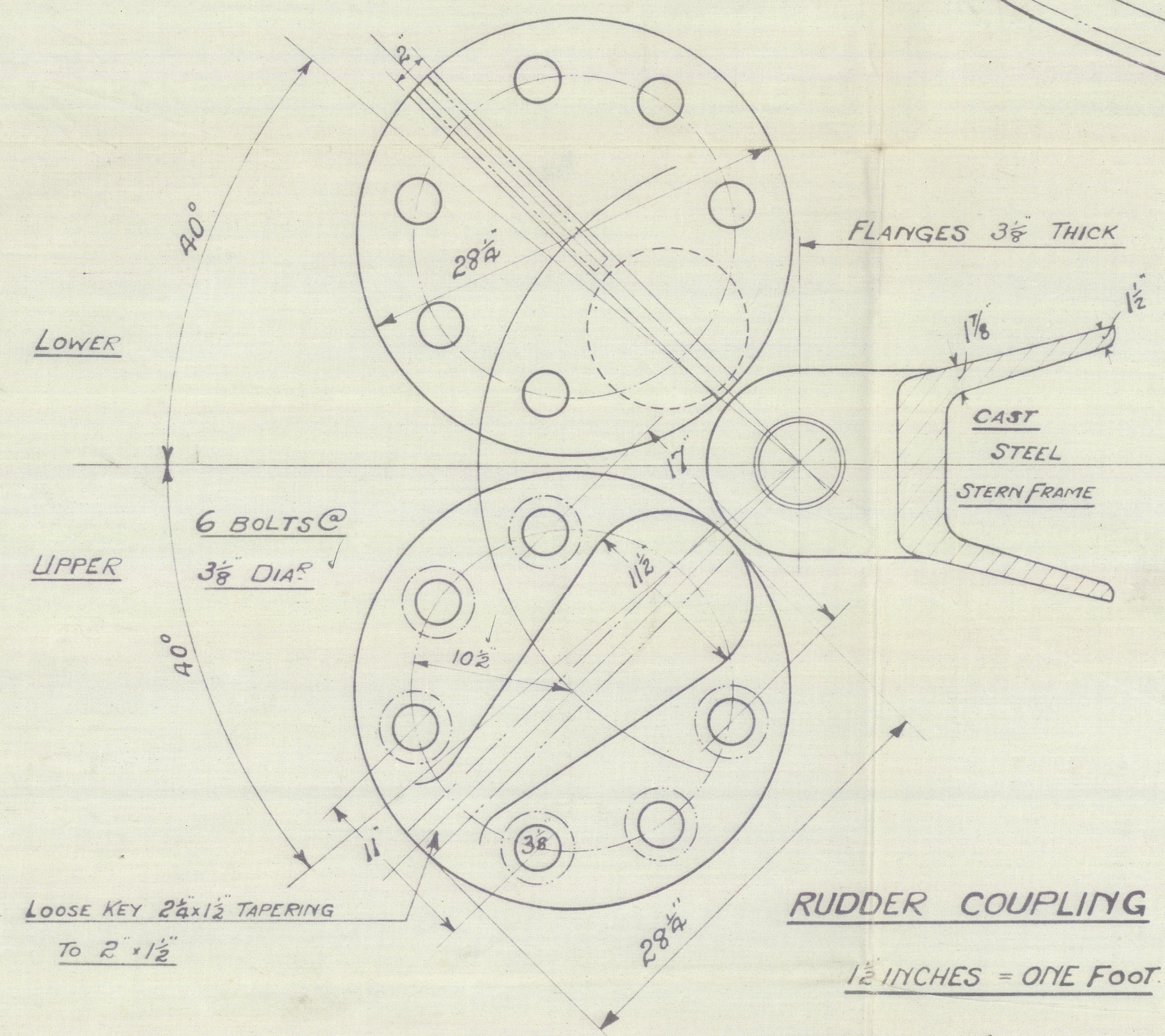
CASTING TO BE MADE IN TWO HALVES
ALL WEBS & FLANGES
1 3/4" THICK.



SECTION AT FRAME 8.

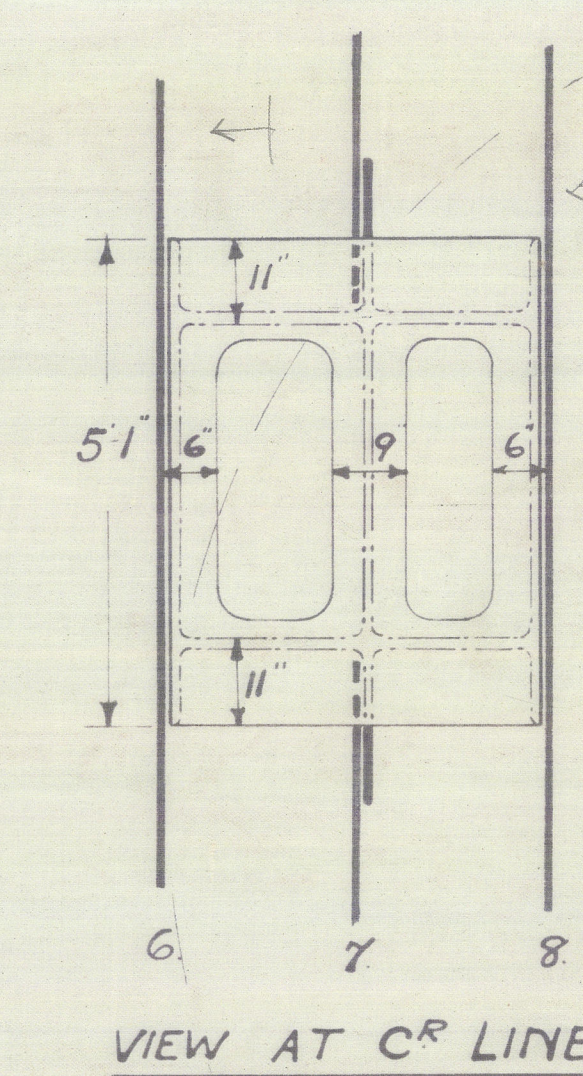
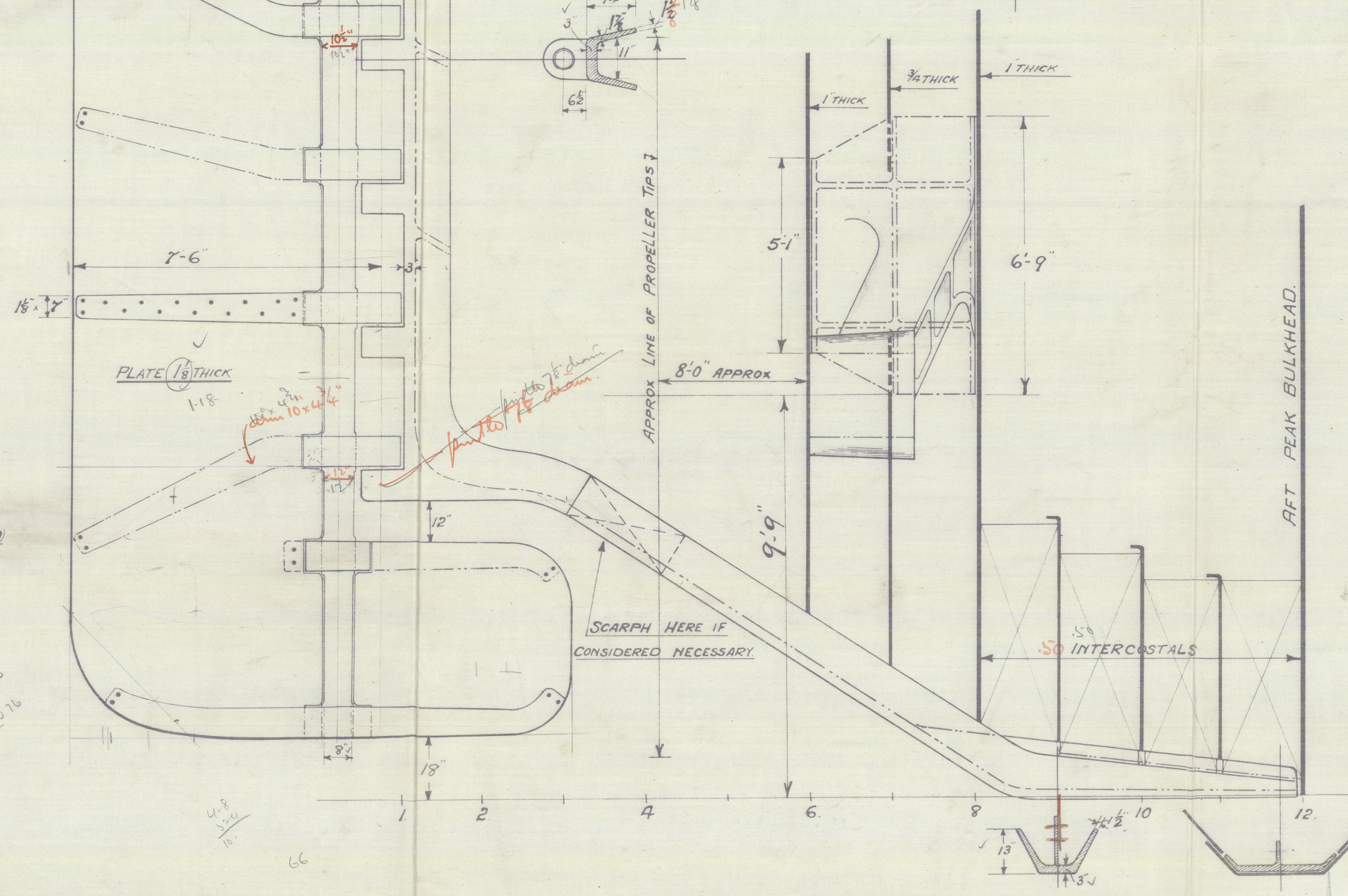


SECTION AT 7.



NOTES

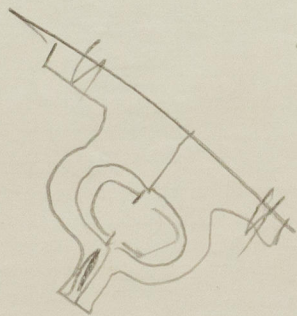
- UPPER RUDDER STOCK 10 1/2" DIA. (PROPOSED 11 1/2" DIA.) (FORGED)
- LOWER " 10 1/2" AT HEAD 8" DIA AT HEEL INCREASED 10% (FORGED)
- RUDDER PINTLES 5 1/2" DIA. AT ARMS FOR KEYWAY
- RUDDER ARMS 9" x 4 1/2" TAPERING TO 7" x 1 1/2" (CAST STEEL)
- GUDGEONS 9" DEEP SPACED 3'-6" APART. (Bottom gudgeons increased to 10')
- RUDDER PLATE 1 1/8" THICK
- RVETS IN RUDDER ARMS 1 1/2" DIA. @ 5' 6" APART.



VIEW AT C-C LINE.

COMMONWEALTH SHIP CONSTRUCTION BRANCH	
31 GIBSON STREET, MELBOURNE.	
PLAN NO. 222	DATE 28/5/14
DRAWN BY P.W.	CHECKED BY J.W.
FILED	SIGNED
COPY FOR Lloyd's	DATE 31/5/14
NO. 222	

FORDSDALE



002846-002852-0261



© 2020

Lloyd's Register
Foundation

Australian 500 T 88

London (Item France and

Propeller Brackets

Transferred To
Jui Jung

London Office copy

3032
Sen Box ~~2558~~

- Ferndale

002846-002852-0261



© 2020

Lloyd's Register
Foundation