

PLAN No. 5.
SHIP N° 404
STERNFRAME & RUDDER
 Scale: $\frac{3}{4}$ " = 1'-0" AND AS MARKED.

SPEED: 14 1/2 KNOTS.



STERNFRAME FABRICATED TO LLOYDS REQUIREMENTS.
 TEMPLATES SUPPLIED BY SHIPBUILDER.
 ALL HOLES SHOWN TO BE DRILLED BY MARKERS.
 GUDGEONS TO BE MACHINED & FILLED WITH LIGNUM VITAE BUSH.
 BOTTOM GUDGEON FILLED WITH HARD STEEL BEARER.
 ALL EXPOSED WELDING TO BE BUFFED SMOOTH.

DETAIL OF BOTTOM PINTLE
 SCALE 3" = 1'0".

DETAIL OF COUPLING & TOP PINTLE
 SCALE: 3" = 1'-0"

OFFSETS FOR OUTLINE
 TO OUTSIDE OF PLATE.

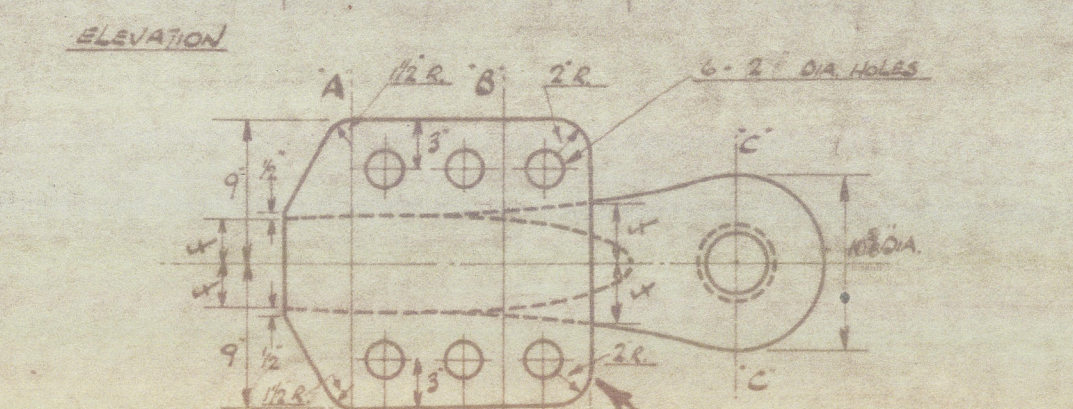
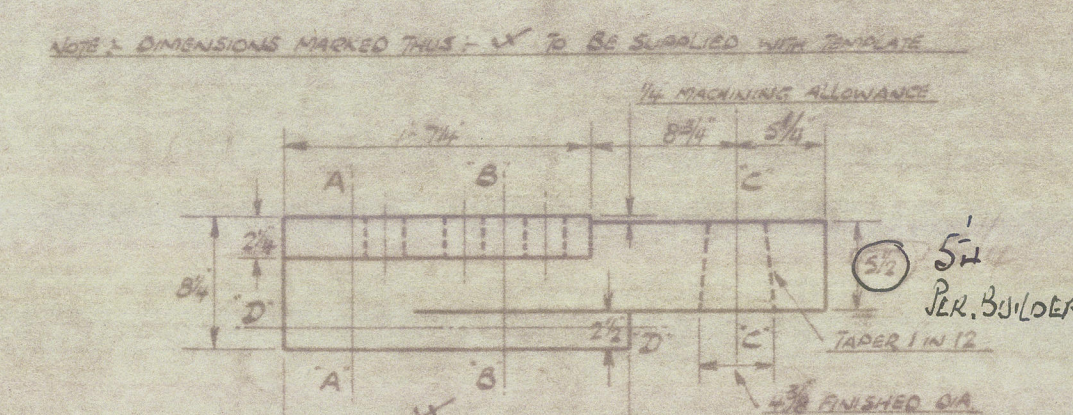
PLAN AT TOP OF RUDDER.

SECTION AT 'AA'

SECTION AT 'BB'
 SCALE: 1 1/2" = 1'-0"

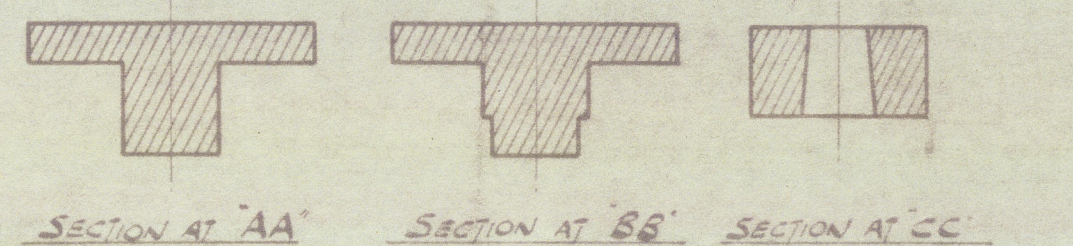
SECTION AT 'CC'
 SCALE 1 1/2" = 1'-0"

SHIP N° 404
 SKETCH OF RUDDER TOP FORGING
 Scale 1" = 1'-0". MATERIAL: FORGED SCRAP STEEL

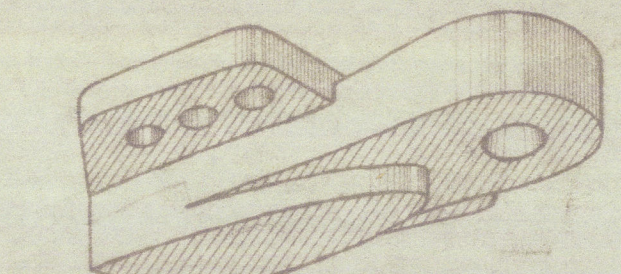


LEFT BLANK, DRILLING AND DRILLING TO BE DONE BY MARKERS OF RUDDER.

SECTION AT 'DD'

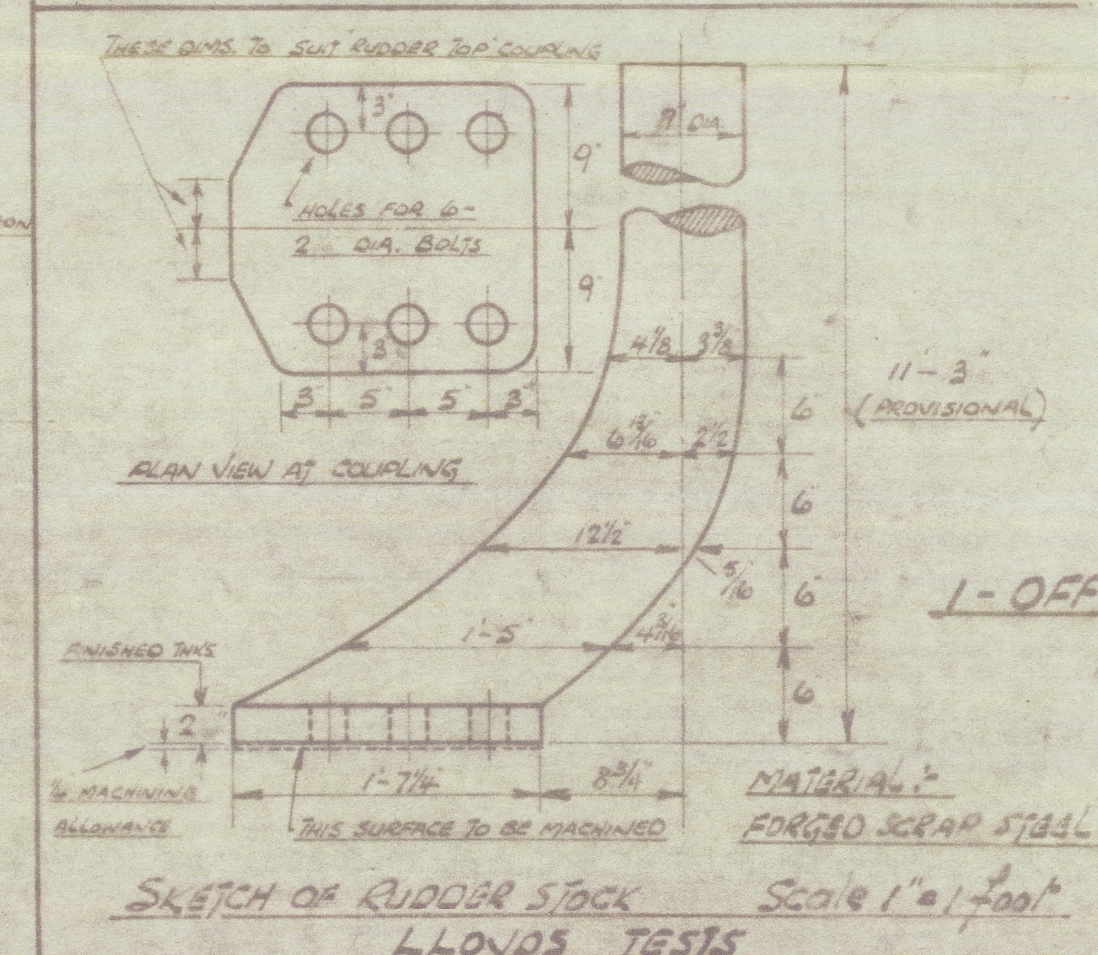


LLOYDS TESTS



1-OFF

PERSPECTIVE VIEW LOOKING FROM AHEAD



1-OFF

SKETCH OF RUDDER STOCK
 LLOYDS TESTS
 SCALE 1" = 1'-0"

Copy of plan
 Approved
 J. R. C.
 14/9/1917
 Lloyd's Register



© 2020

Lloyd's Register
Foundation

Ardooson Becking and Co

Yd. no 4041

" Baltic Coast

The Glasgow Rev 72711

002846-002852-0082



© 2020

Lloyd's Register
Foundation

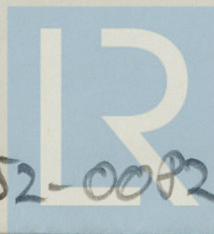
"BALTIC COAST" ★

Sternframe & rudder

RECORDS DEPT.,
LONDON



002846-002852-0082



© 2020

Lloyd's Register
Foundation