

# FREEBOARD VERIFICATION FORM FOR STEAMERS.

(When received in London Office)

Name *Novington*

No. *132729*

No. in Reg. Book *798*

Registry (For Foreign Vessels)

Steel *Steel*

State whether Classed by Lloyd's Register

of Owners

Date of Verification

I have to report that the Freeboard from the centre of disc to the top of the  
ry deck line, and the lines in connection therewith, as given below, assigned  
Committee to this vessel, have been correctly marked on the vessel's sides,  
rdance with the printed instructions :—

Centre of disc to top of statutory deck line *3* ft. *2* ins.

Centre of disc to top of statutory deck line }  
at awning or part-awning deck . . . } ft. ins.

Fresh water line above centre of disc . . . *5 3/4* ins.

Indian Summer line above centre of disc . . . *4 1/2* ins.

Winter line below centre of disc . . . *4 1/2* ins.

~~Winter North Atlantic line below centre of disc~~ . . . ins.

Distance between the top of statutory deck  
line on vessel's side and the intersec-  
tion of the continuation of upper side of  
~~wood or iron~~ deck with the vessel's side } at ~~main, spar or upper dk.~~ *1 3/4* ins.  
at awning or pt.-awning dk. ins.

NOTE.—It should be clearly shown whether the statutory deck line is set off from a wood or iron deck.

*to have*  
*8/8/13*

Surveyor.

To be filled up in London Office.)

ment No. Date of Committee's Minute

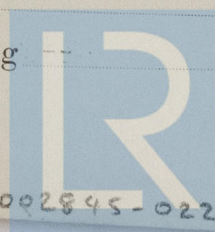
led Depth for record . . . . . ft. ins.

boards compared and found correct by date

paid ? Form for Certificate *A*

ctions date

icate written *8/8/13* Noted for posting



© 2020

Lloyd's Register  
Foundation

002838-002845-0223