

6 FEB 1945

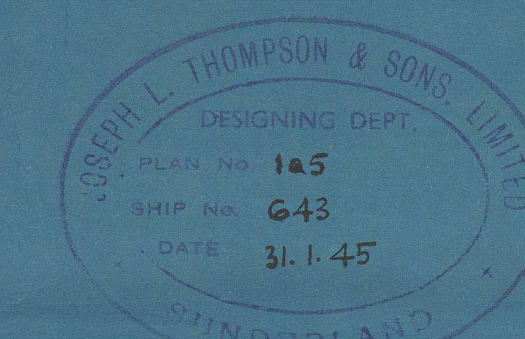
# YARD No. 643, TWIN SCREW OILTANKER.

TO CLASS +100 AT LLOYDS.

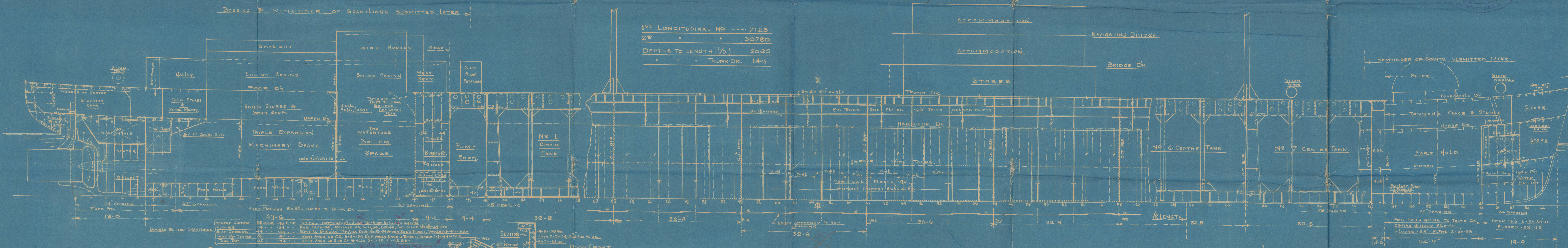
LONGITUDINAL FRAMING AT BOTTOM - IN CENTRE TANKS, UPPER DECK,  
& TRUNK DECK.

LENGTH BP 382'-0", BR MLD 62'-6", DEPTH MLD 18'-9".

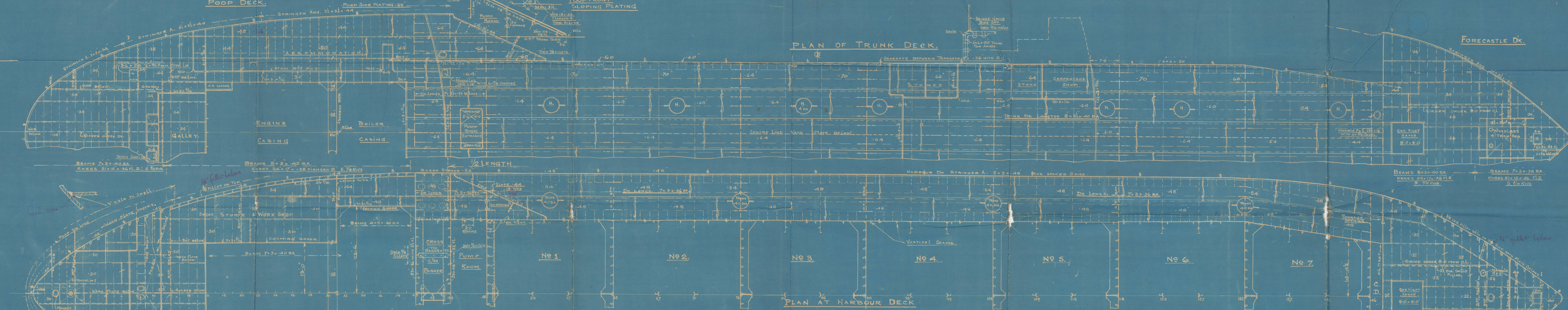
(386'-6")



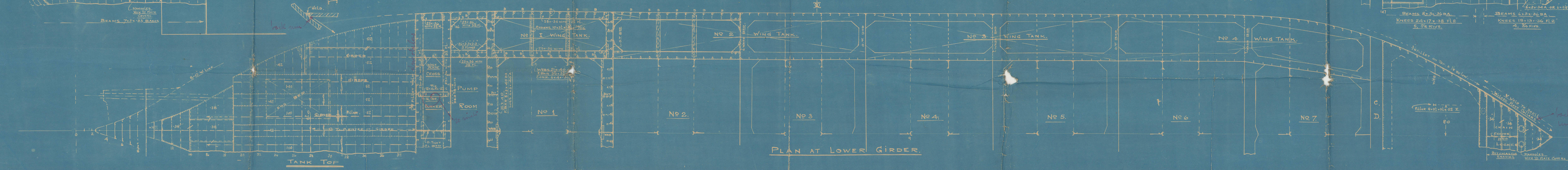
1<sup>st</sup> LONGITUDINAL No. --- 7125  
2<sup>nd</sup> " " 30780  
DEPTHS TO LENGTH (1/16) 20/25  
" " " TRUNK DK. 14-1



PLAN OF TRUNK DECK.



PLAN AT HARBOUR DECK.



PLAN AT LOWER GIRDER.




J. L. Thompson & Sons. Ltd.

yard nos. 643 + 645.

Also Nos 655, 663 + 667

Profile + Decks.

\* "Galeomma" 

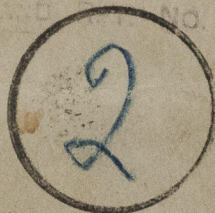
SUNDERLAND RPT. NO. 34479.

Garesella.

SUNDERLAND RPT. NO. 34516

Lomphina

SUNDERLAND RPT. NO. 34861



S.V. Gemma

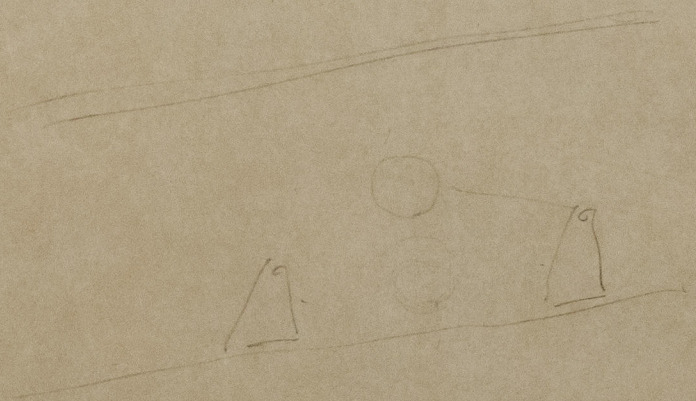


© 2021

Lloyd's Register  
Foundation

002830-002831-0025





© 2021

Lloyd's Register  
Foundation