

RUDDER FORGING.

S.S. Nº 228.

(Sister Vessel to Hebb, and Miosé,
No. 213 & 214 Ship.)

HOLE TAPPED IN HEAD
FOR LIFTING RUDDER.

SCALE $\frac{1}{2}'' = 1 \text{ FOOT}$

1.8.23

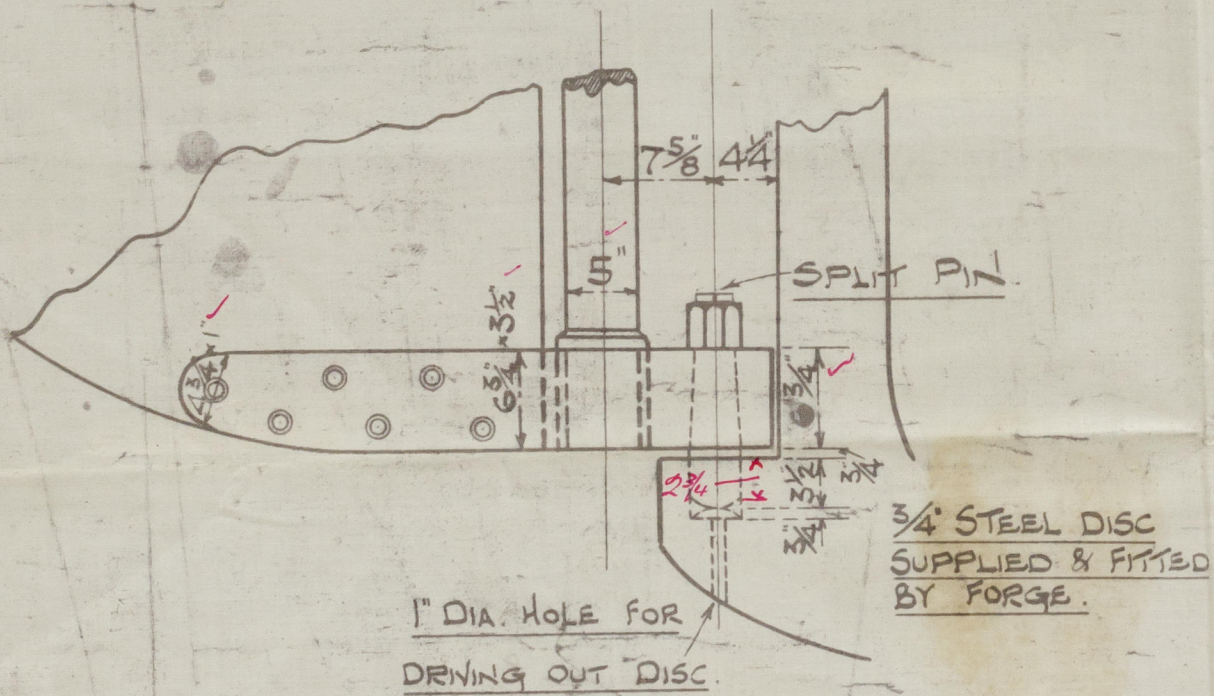
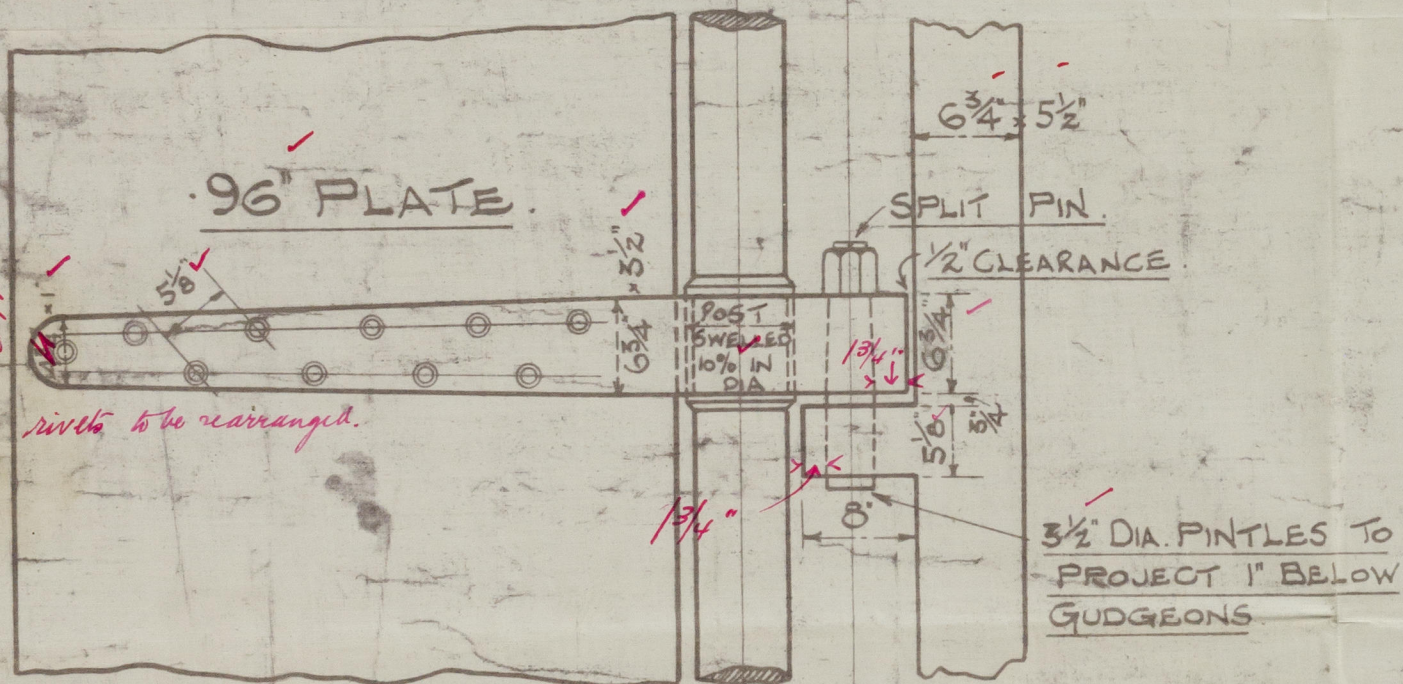
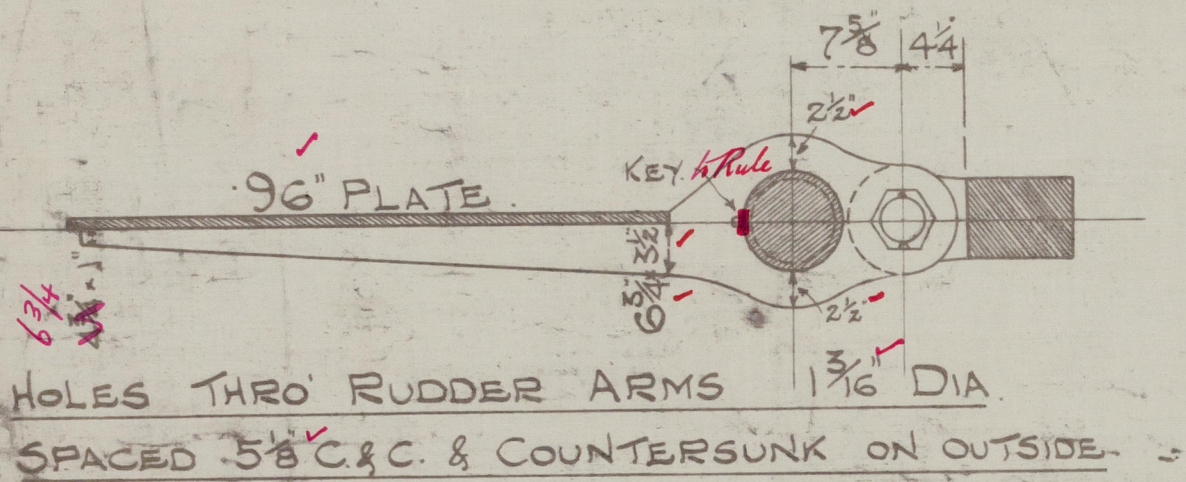
TO LLOYDS' SURVEY.

$$A = 81.5 \text{ SQ. FT.} \quad D = 2.42 \text{ FT.} \quad A \times D = 197.$$

SPEED NOT EXCEEDING 10 KNOTS

DETAILS.

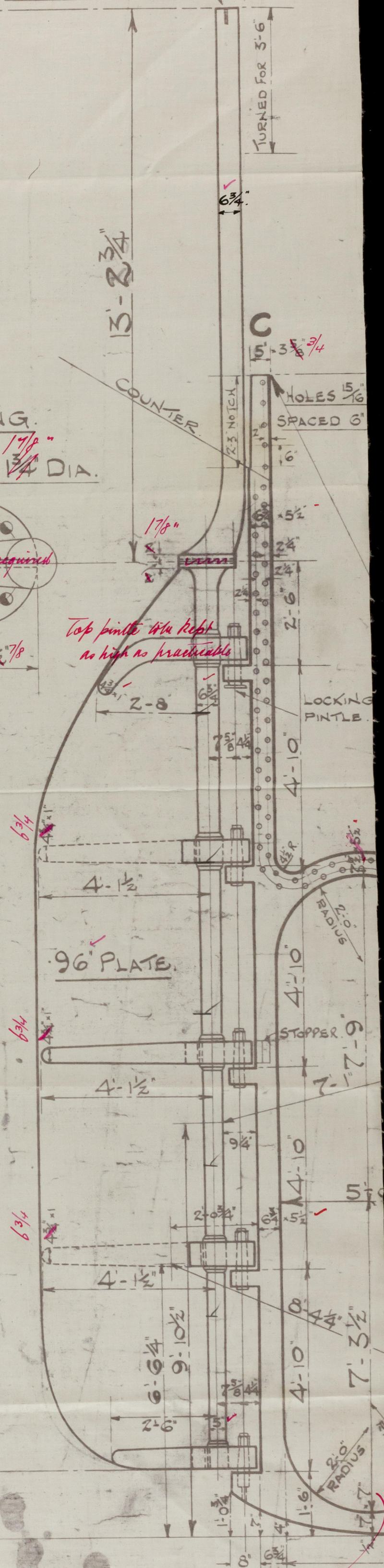
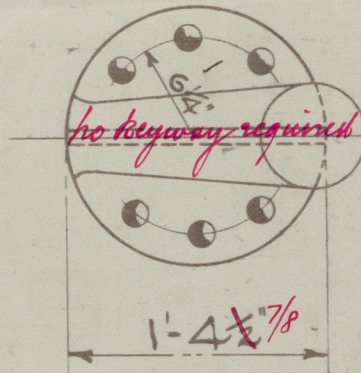
SCALE 1" = 1 FOOT.



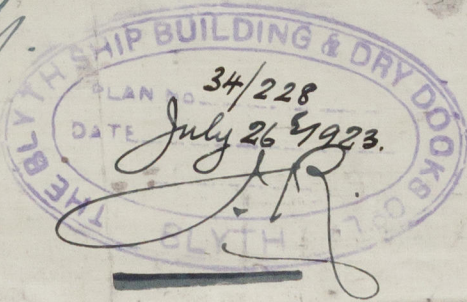
STRENGTH OF PORDER 55-0

COUPLING

6 BOLTS, ~~1 3/4~~ DIA.



664.
1.8.23.



Sec 4 clause 5c

Lloyd's Register
Foundation

002825-002829-0178

(3)

Blyth. S.B.C.

No. 228.

No. 234.

Rudder. Frame.

S & S GALLIUM.

NEWCASTLE ON TYNE.

Report No. 48098.

S. J. Thorne

NEWCASTLE ON TYNE.

Report No. 79098.



© 2020

Lloyd's Register
Foundation

002825-002829-0178