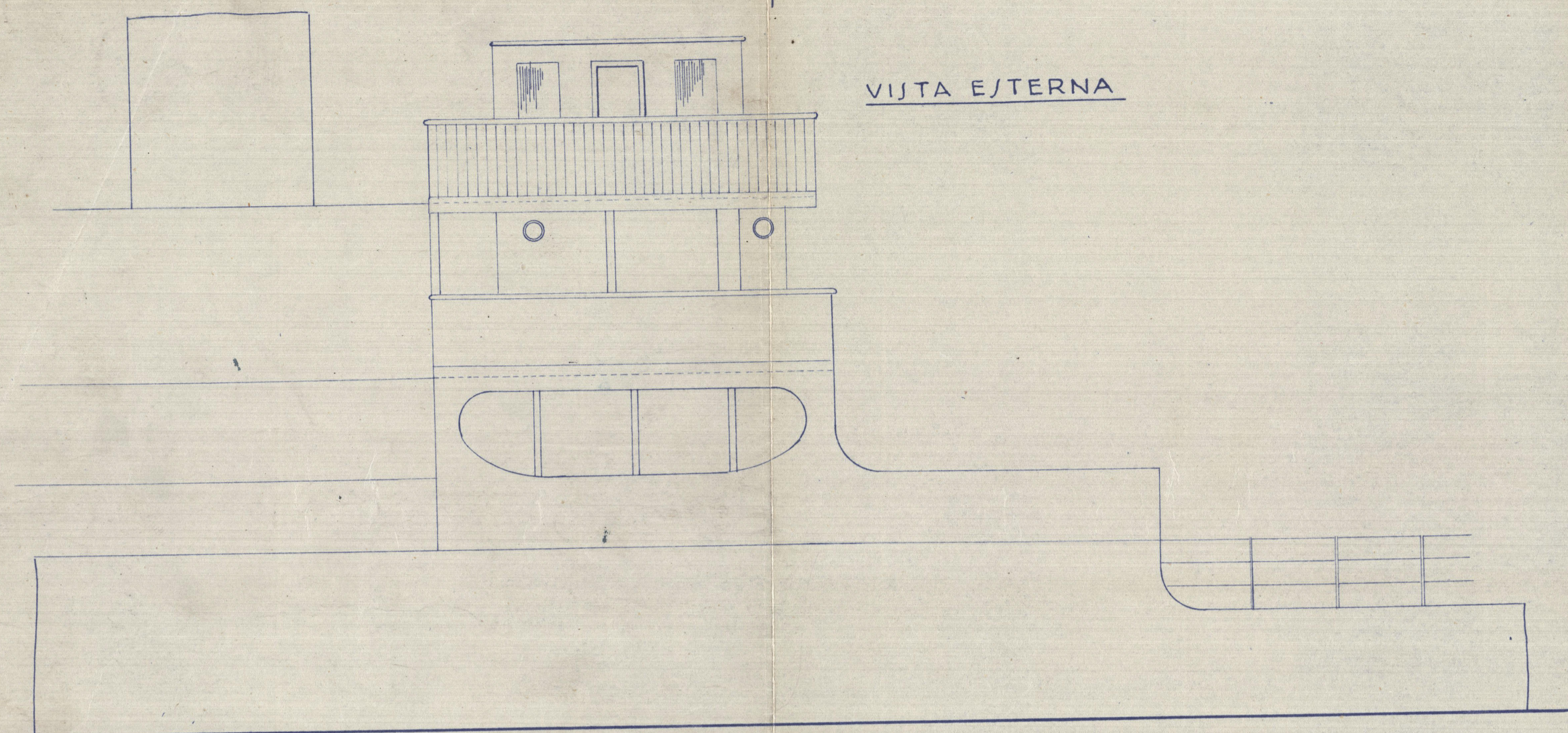
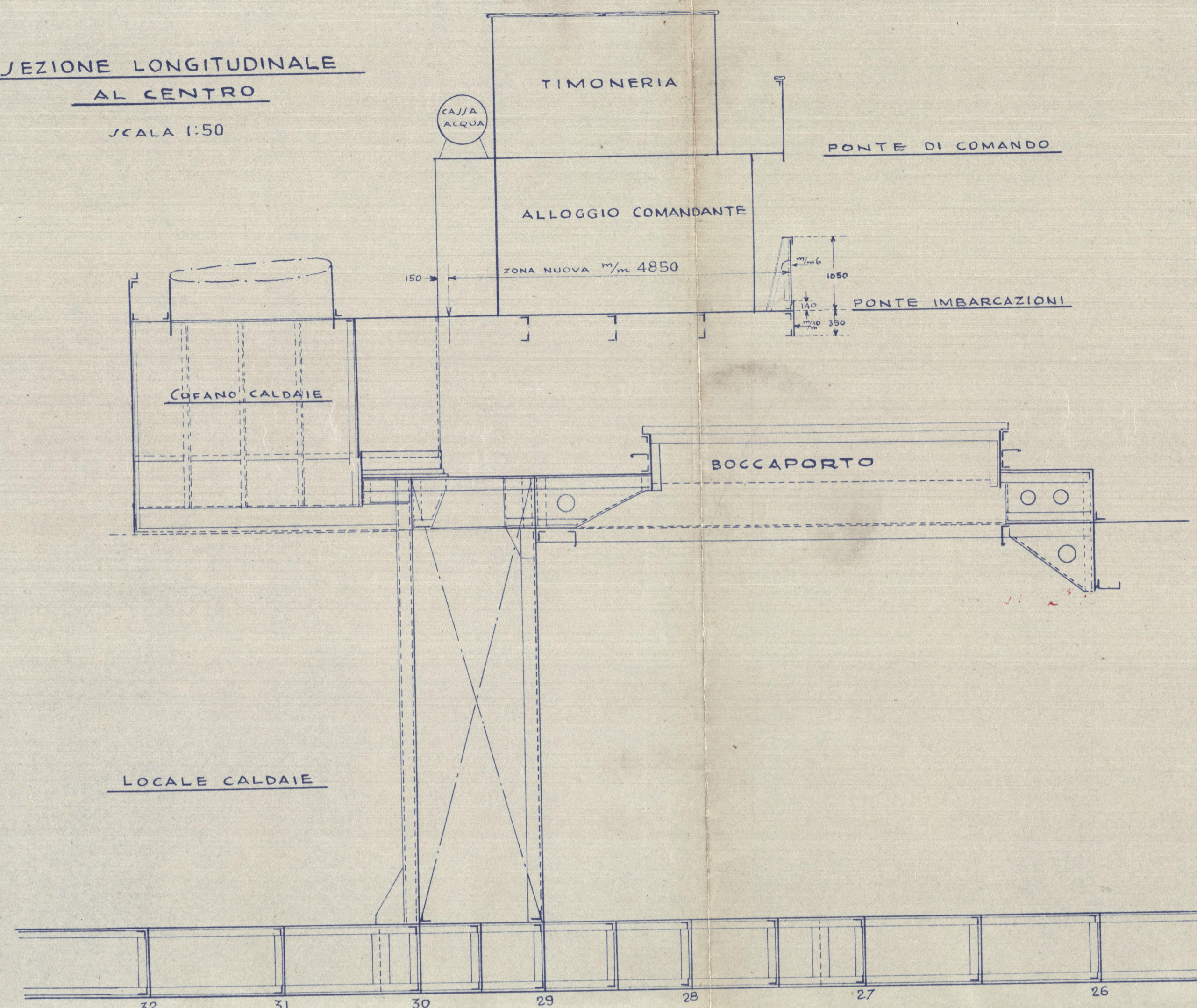


VISTA ESTERNA



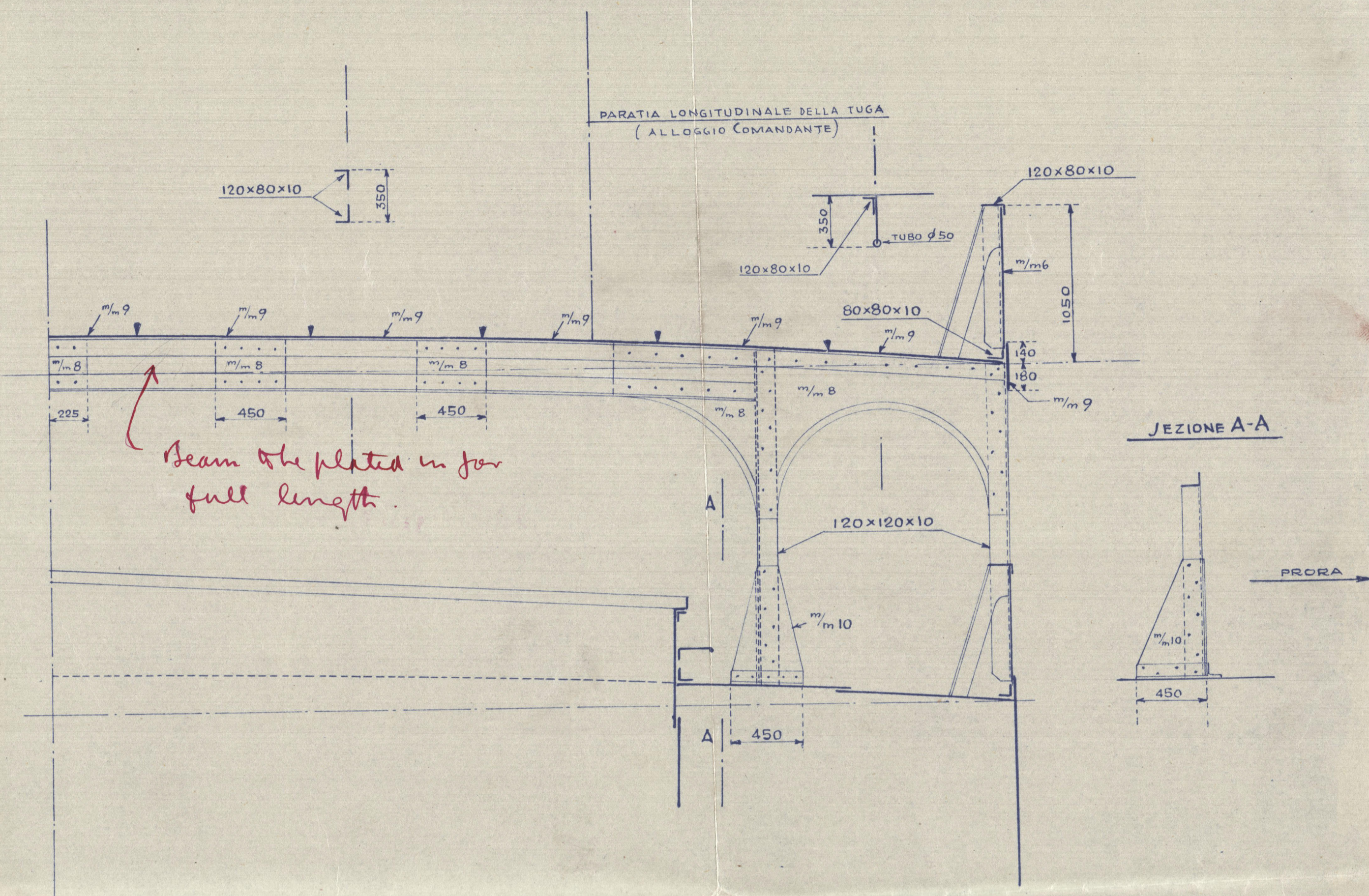
SEZIONE LONGITUDINALE  
AL CENTRO

SCALA 1:50

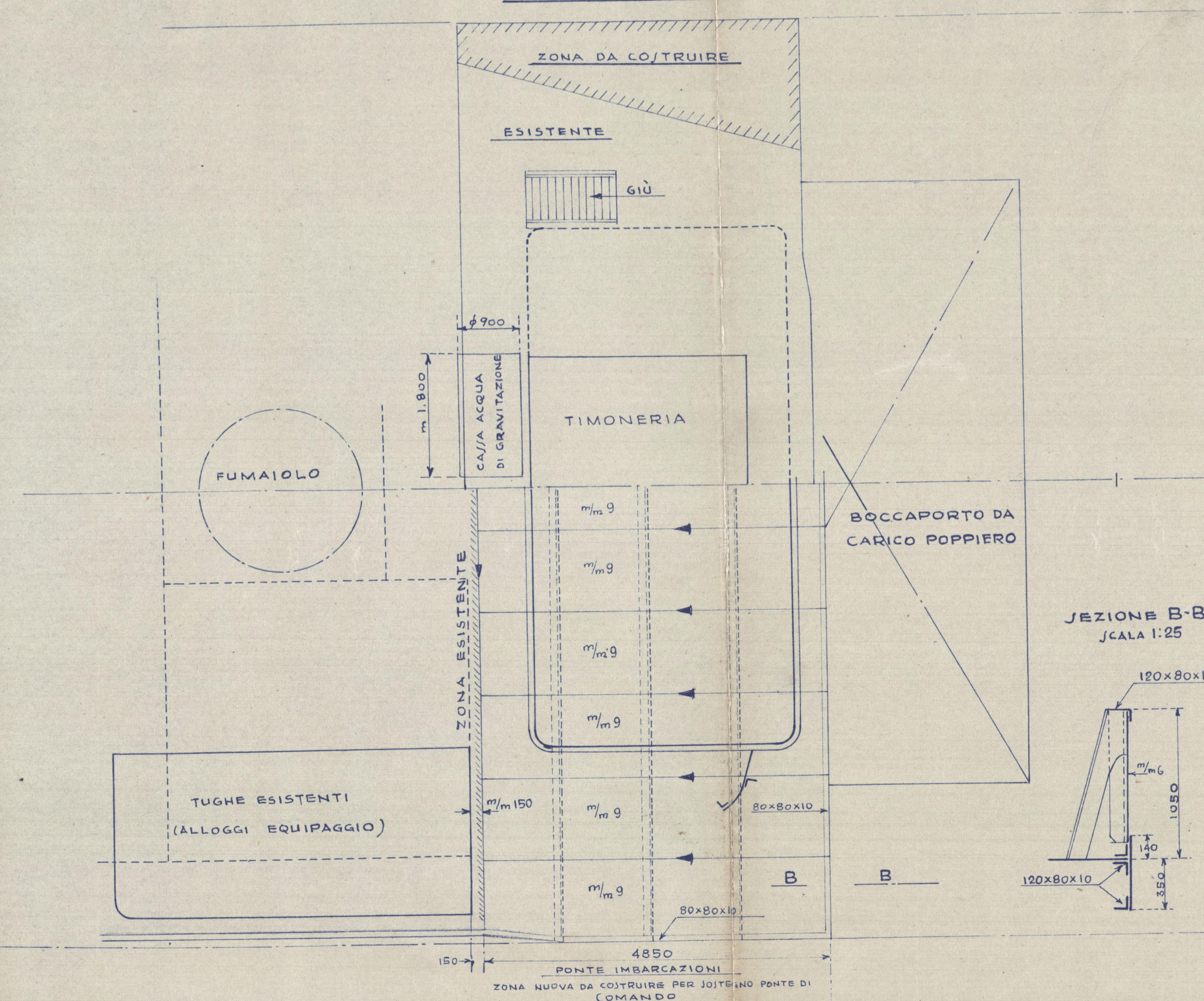


SEZIONE TRASVERSALE

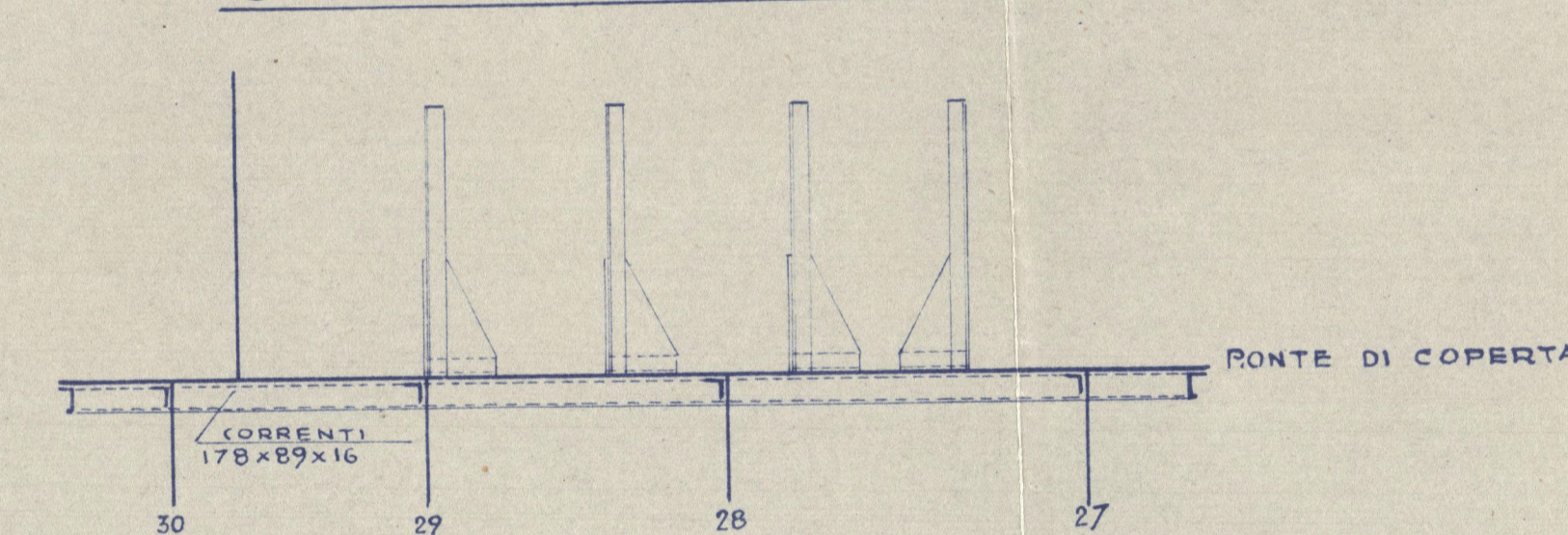
SCALA 1:25



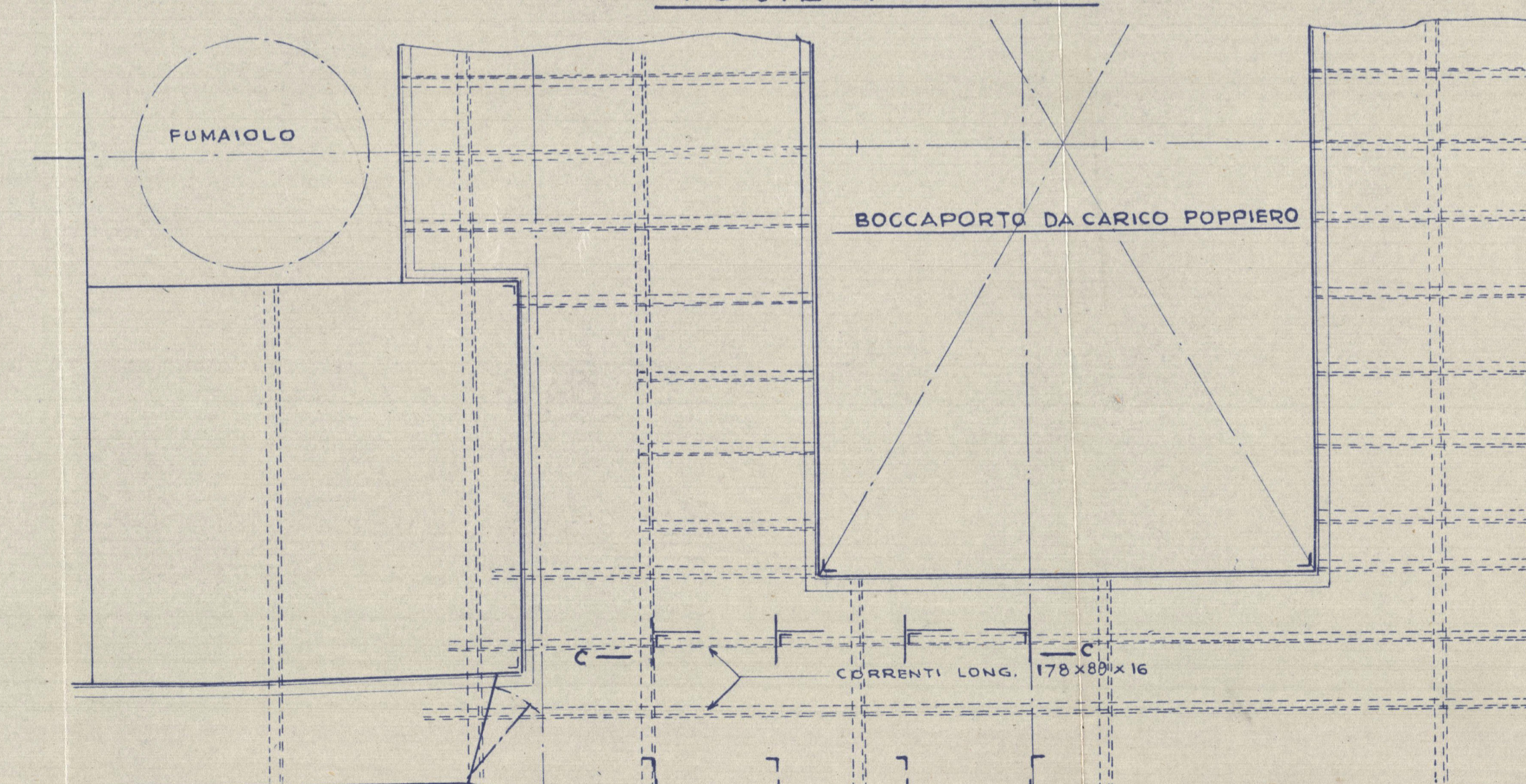
PONTE DI COMANDO



SEZIONE LONGITUDINALE C-C



PONTE DI COPERTA



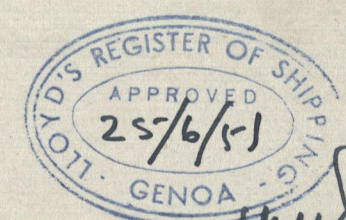
note MISC. n° 30  
LLOYD MEDITERRANEO S.p.A.  
ROMA-VIA MONTENAPOLEONE 106  
PLAN n° 10

PIROSCAFO "VALBRUNA"

STRUTTURA DEL NUOVO PONTE PER LA  
SISTEMAZIONE A POPPA DEL PONTE DI COMANDO

p.p. LLOYD MEDITERRANEO S.p.A.

Giulio Franz



ROMA - GIUGNO 1951

TO ACCOMPANY REPORT No. 8449  
DATED 25/6/51