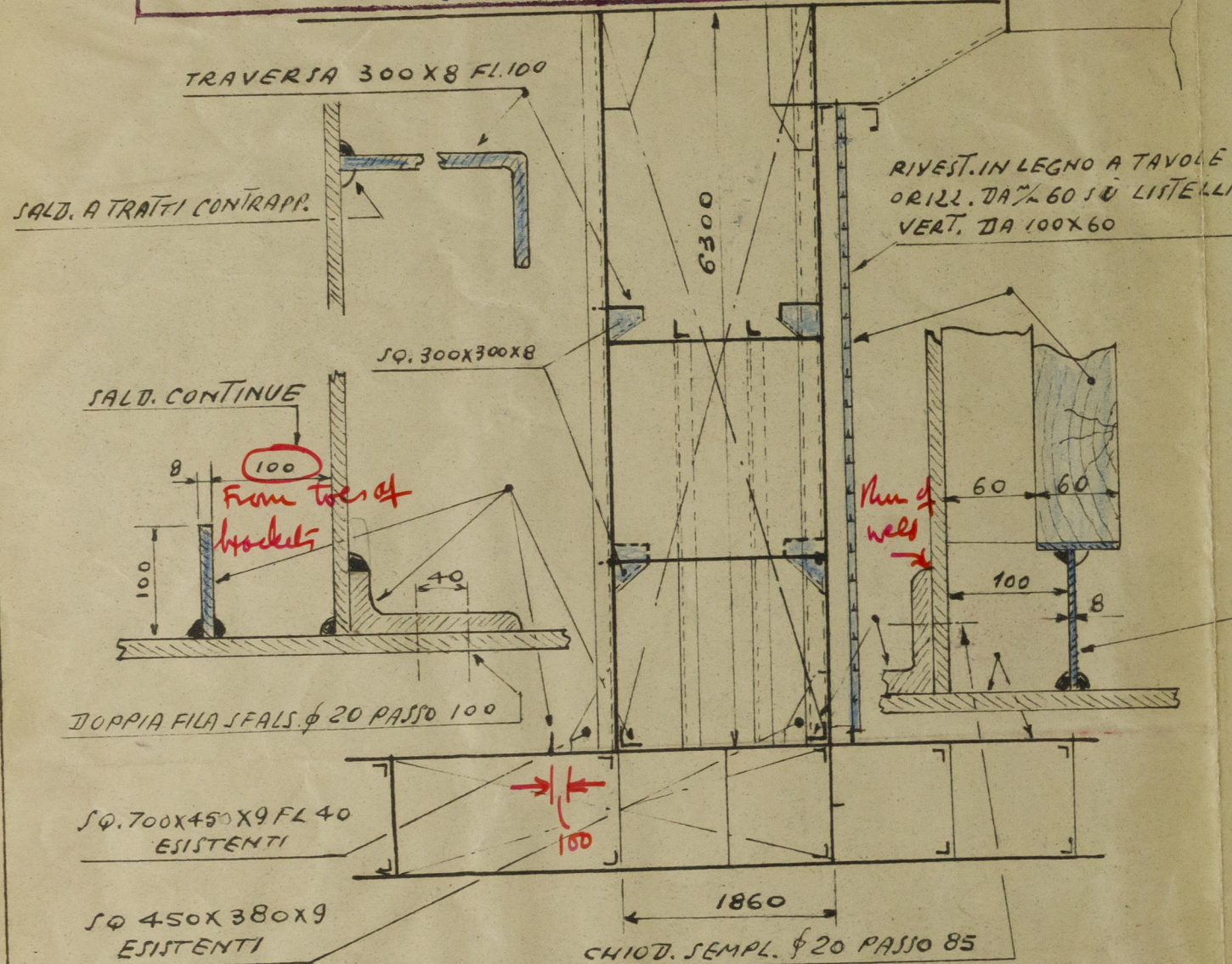


TO ACCOMPANY Genoa REPORT No. 18449
 DATED Sept 1957



INDUSTRIE NAVAL MECC. SPEZZINE - LA SPEZIA

Rpt. No. gen. 18449

SS VALBRUNA

LLOYD MEDITERRANEO - S.P.A. ROMA

— TRASFORMAZ. PER COMBUST. A NAFTA —
 ADATTAM. DELLA CISTERNA ACQUA DIVISA IN
 TRE DEPOSITI PER SERVIZIO NAFTA. —

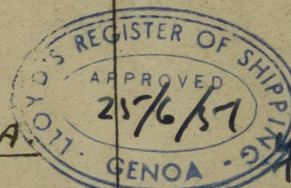
DISEGNO N° 985

SCALA 1:50

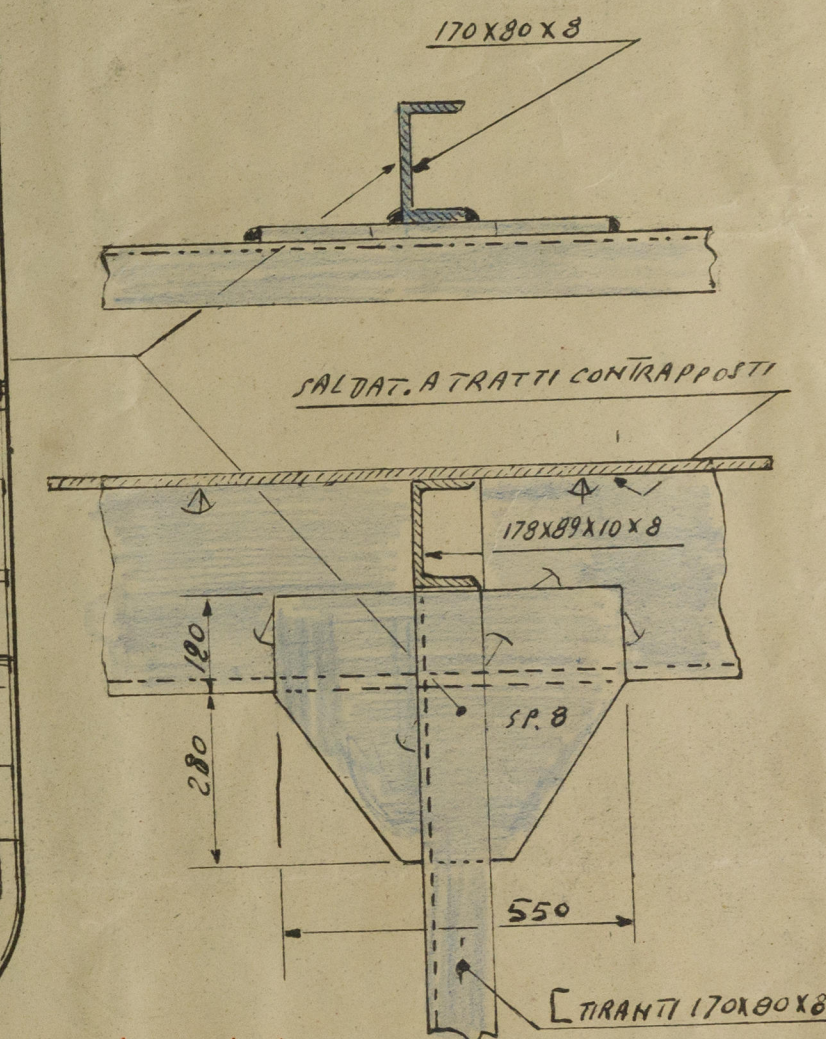
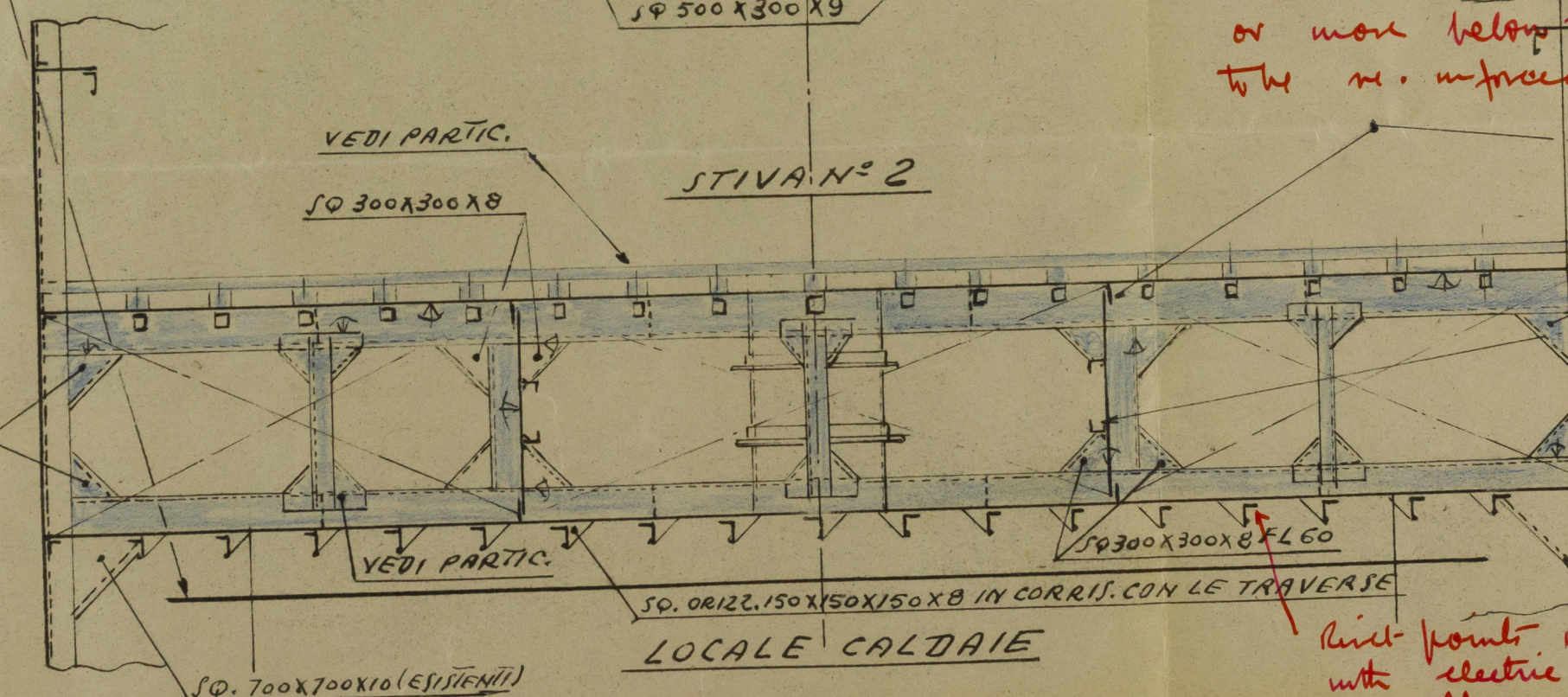
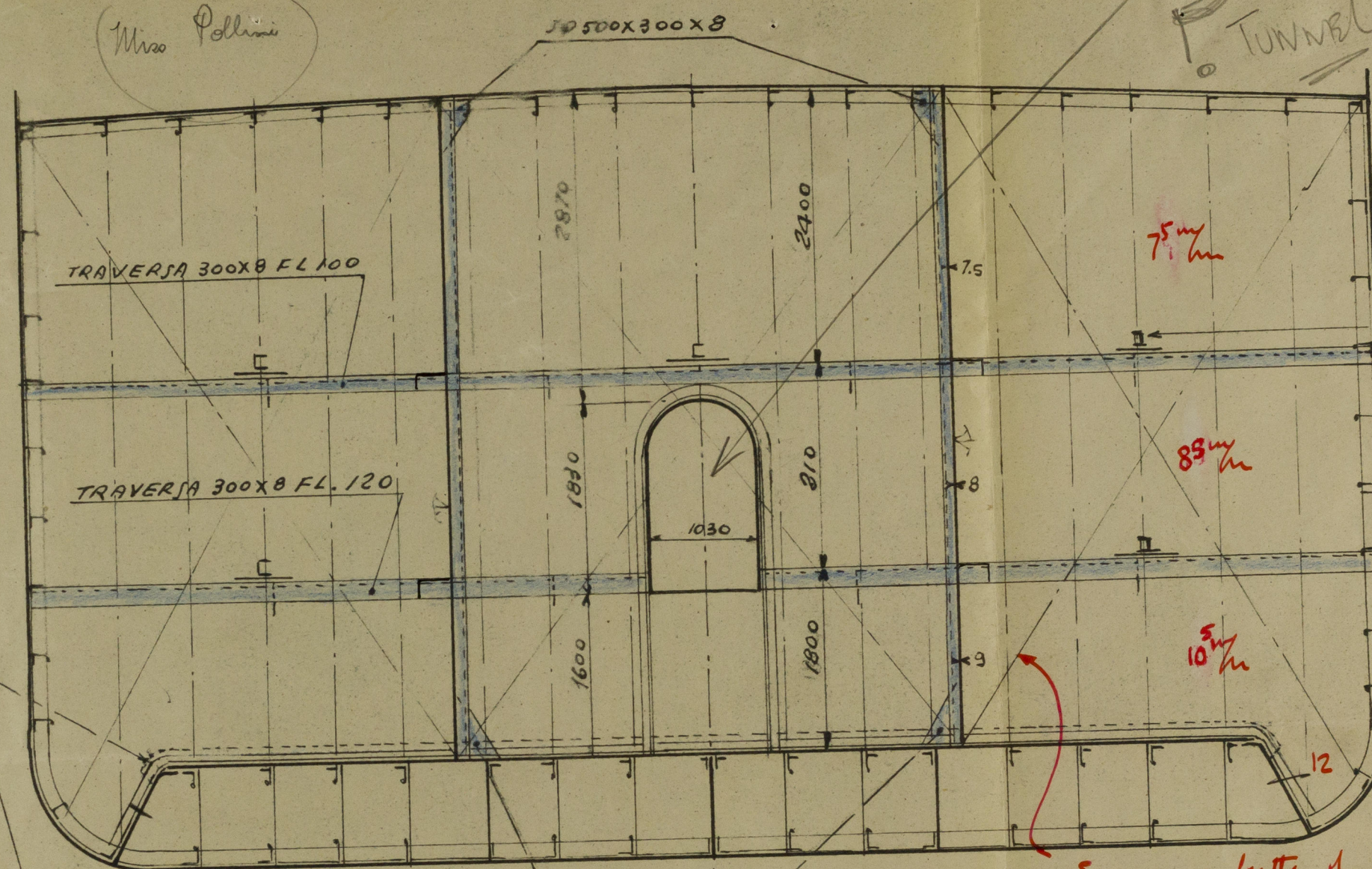
LA SPEZIA 15 GIUGNO 1951

Stelli

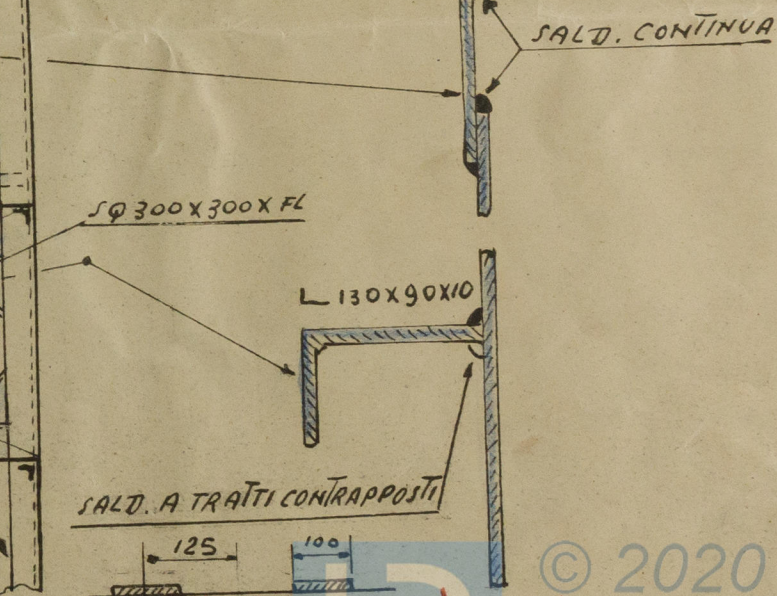
NUOVE STRUTTURE



CAPACITÀ DEPOSITI
 N° 2 LAT. CIASC. 39 = TONN. 78
 N° 1 CENTRALE = TONN. 48
 TOTALE TONN. 126



Seams & butts of plating 16'-0" or more below top of tank to be re-inforced with electric welding.



Reinforced within tank to be re-inforced with electric welding & nuts hardened up or otherwise re-inforced with welding

© 2020

Lloyd's Register Foundation

002825-002829-0047