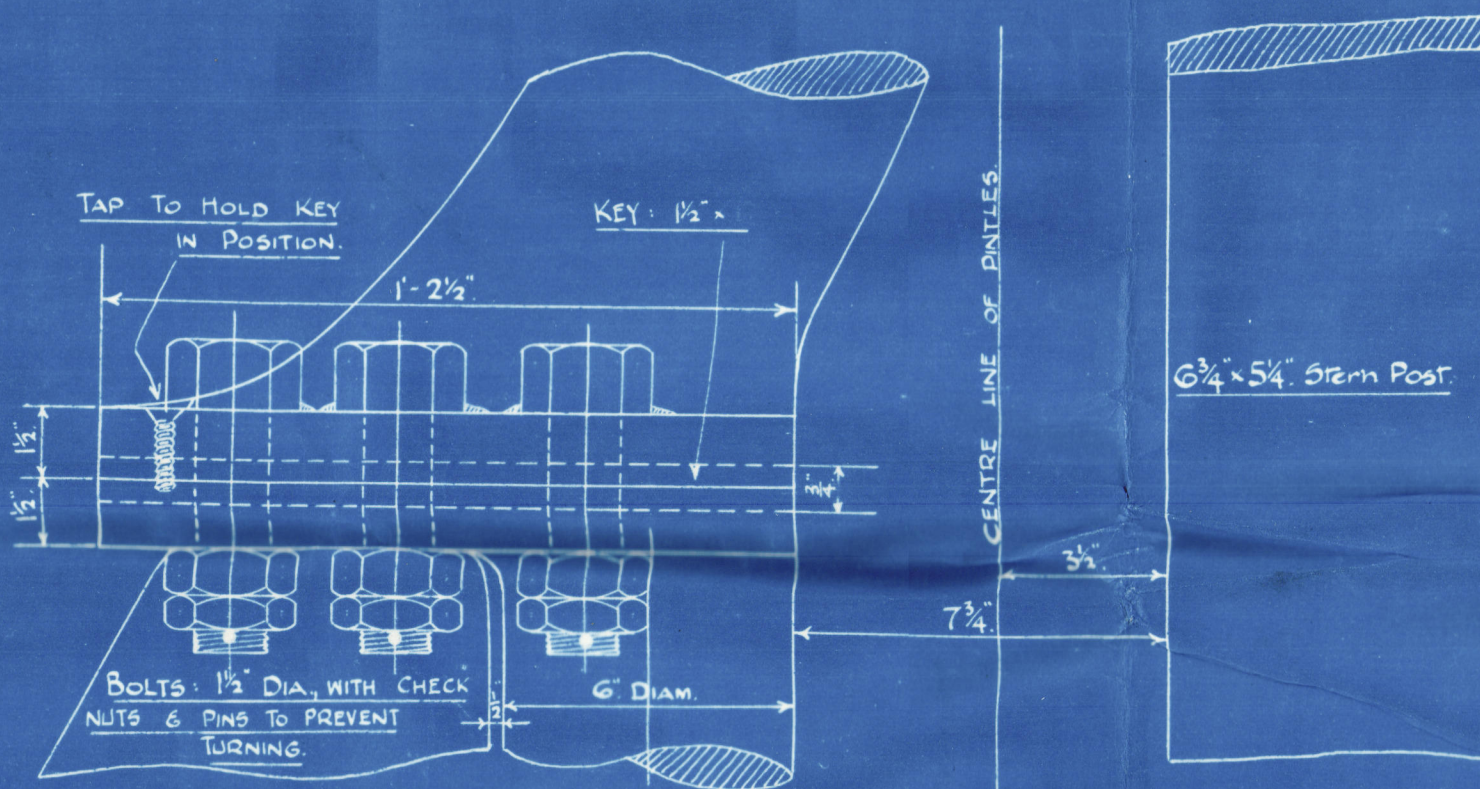
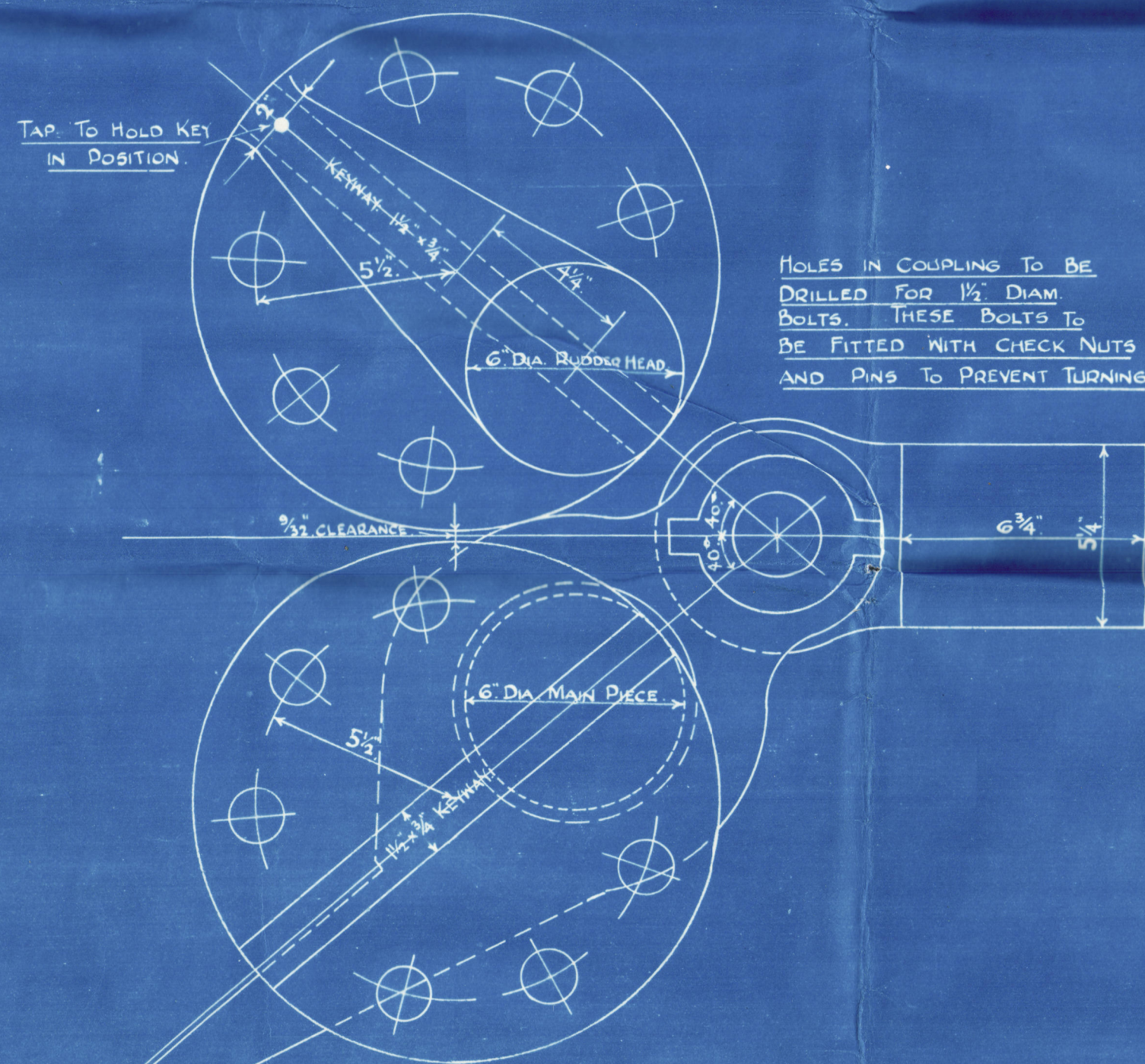


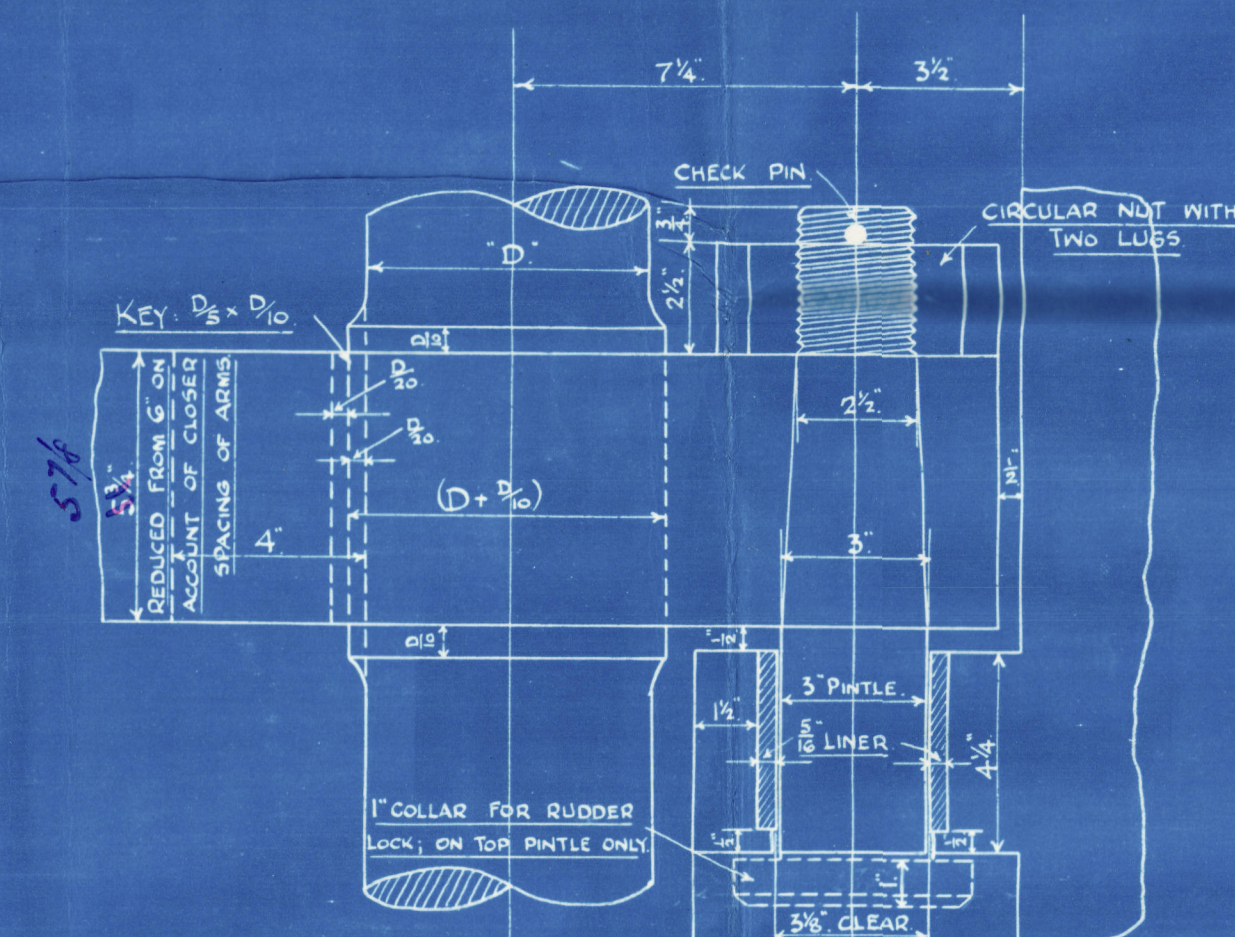
25.5.23.



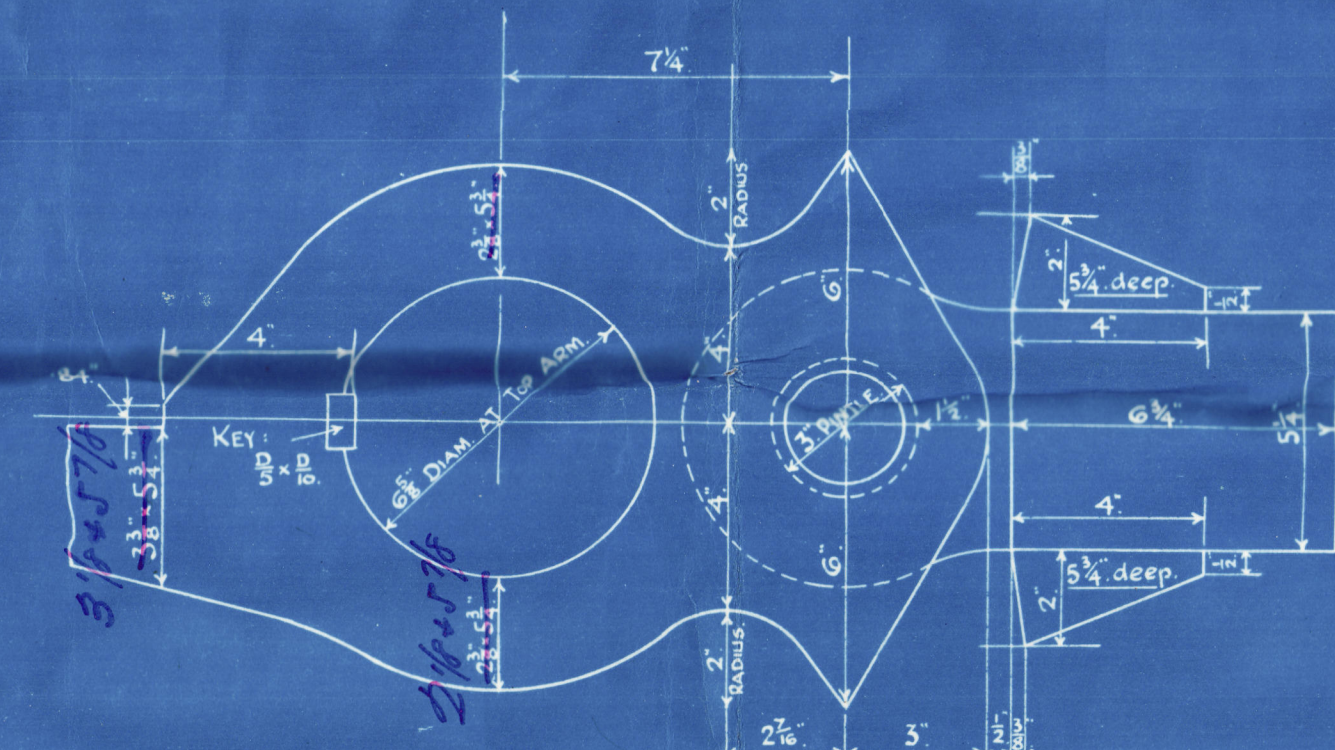
ELEVATION OF CIRCULAR COUPLING  
Scale: 3" = One Foot.



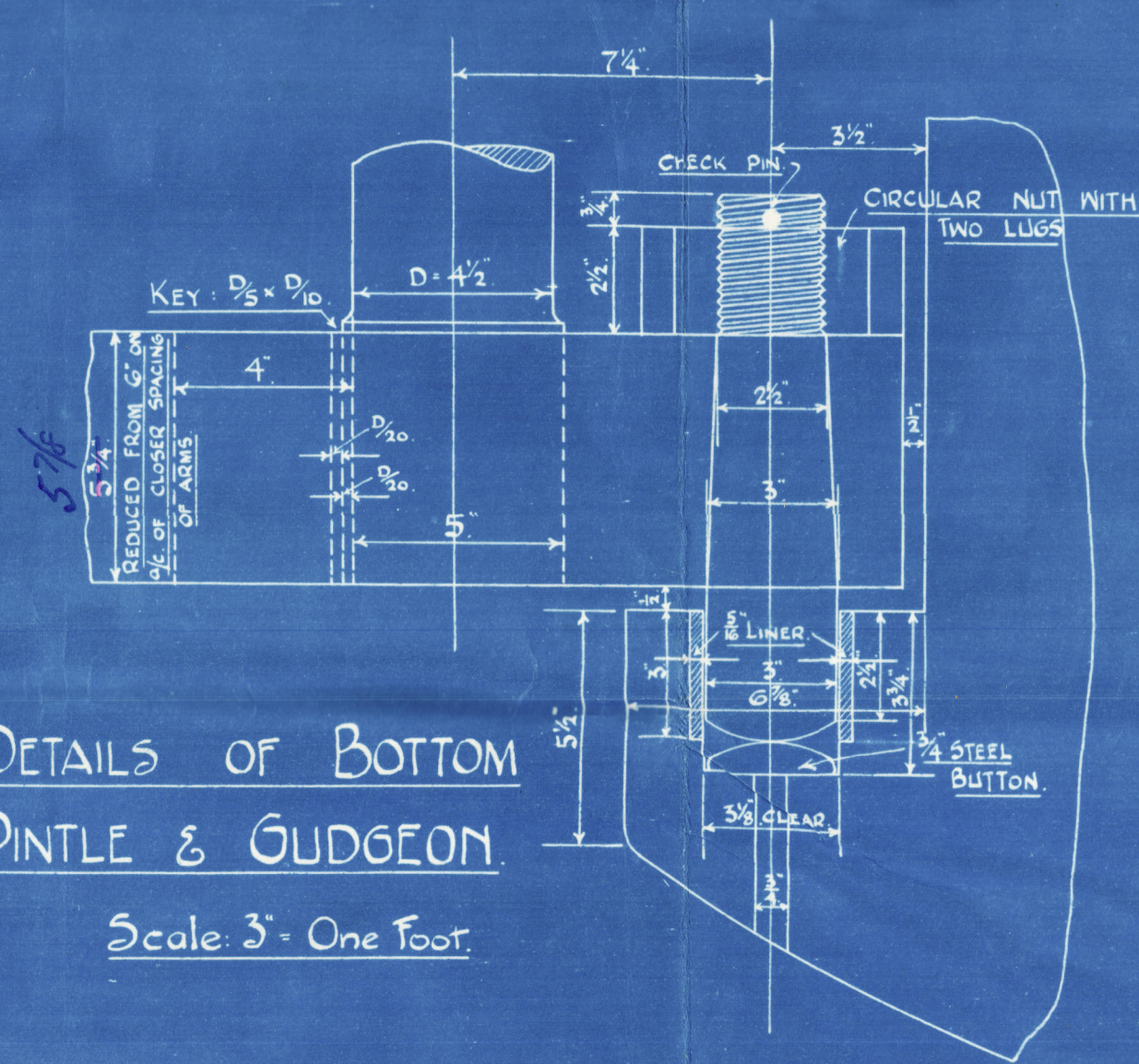
CIRCULAR COUPLING SHOWING  
CLEARANCE FOR UNSHIPPING.  
Scale: 3" = One Foot.



DETAILS OF PINTLES & GUDGEONS.  
Scale: 3" = One Foot.



DETAILS OF  
STOPPER ON NO. 1 GUDGEON.  
Scale: 3" = One Foot.



DETAILS OF BOTTOM  
PINTLE & GUDGEON.  
Scale: 3" = One Foot.

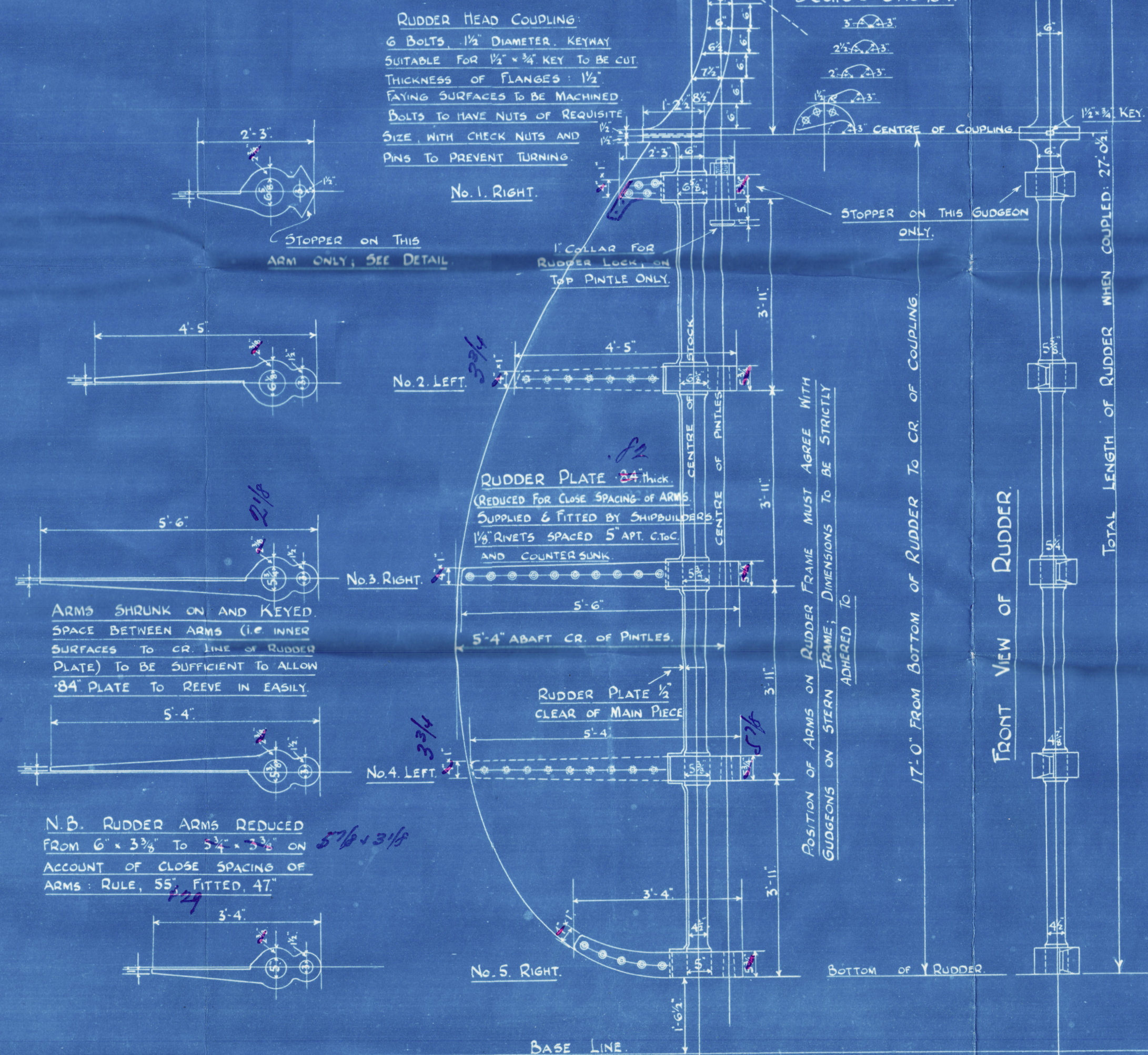
## FORGED IRON RUDDER FRAME

S.S. 227

Scale: 1/2" = One Foot

LLOYD'S SURVEY;  
1921-2. RULES.

MAIN PIECE OF RUDDER TO HAVE STRAIGHT TAPER FROM 6" DIA. AT COUPLING TO 4 1/2" DIA. AT BOTTOM. DIAMETER OF MAIN PIECE IN WAY OF EACH KEYWAY BEING CUT 10% TO ADMIT OF AN EFFICIENT KEYWAY BEING CUT. THIS INCREASE IN THICKNESS IS TO BE UNIFORM ALL ROUND THE MAIN PIECE AND IS TO EXTEND ABOVE AND BELOW EACH ARM FOR A DISTANCE EQUAL TO THE INCREASE IN DIAMETER FROM WHICH POINTS IT IS TO BE GRADUALLY TAPERED OVER A SIMILAR DISTANCE INTO NORMAL DIAMETER OF MAIN PIECE. KEYS TO BE 10% OF DIA. OF MAIN PIECE x 20% OF DIA. OF MAIN PIECE.



HOLES IN RUDDER FRAME TO BE DRILLED FOR 1/8" RIVETS SPACED 5" APART. CQ. TO CR. HOLES COUNTERSUNK BY MAKERS. ALL PINTLES TO BE OF STEEL, AND TO BE PORTABLE 3" DIAMETER. TO BE RIVETED AND FITTED EFFICIENTLY, AND IN ACCORDANCE WITH THE DETAILS SHOWN. CENTRES OF PINTLES AND OF UPPER RUDDER STOCK TO BE IN A DEAD STRAIGHT LINE. CENTRE LINE OF LOWER STOCK TO BE 7 1/4" APT. OF CR. LINE OF PINTLES, AND PARALLEL TO IT.

AREA OF RUDDER: 64.61 sq. ft.  
CG APT. OF PINTLES: 2.47 ft. D.  
A x D = 159.6

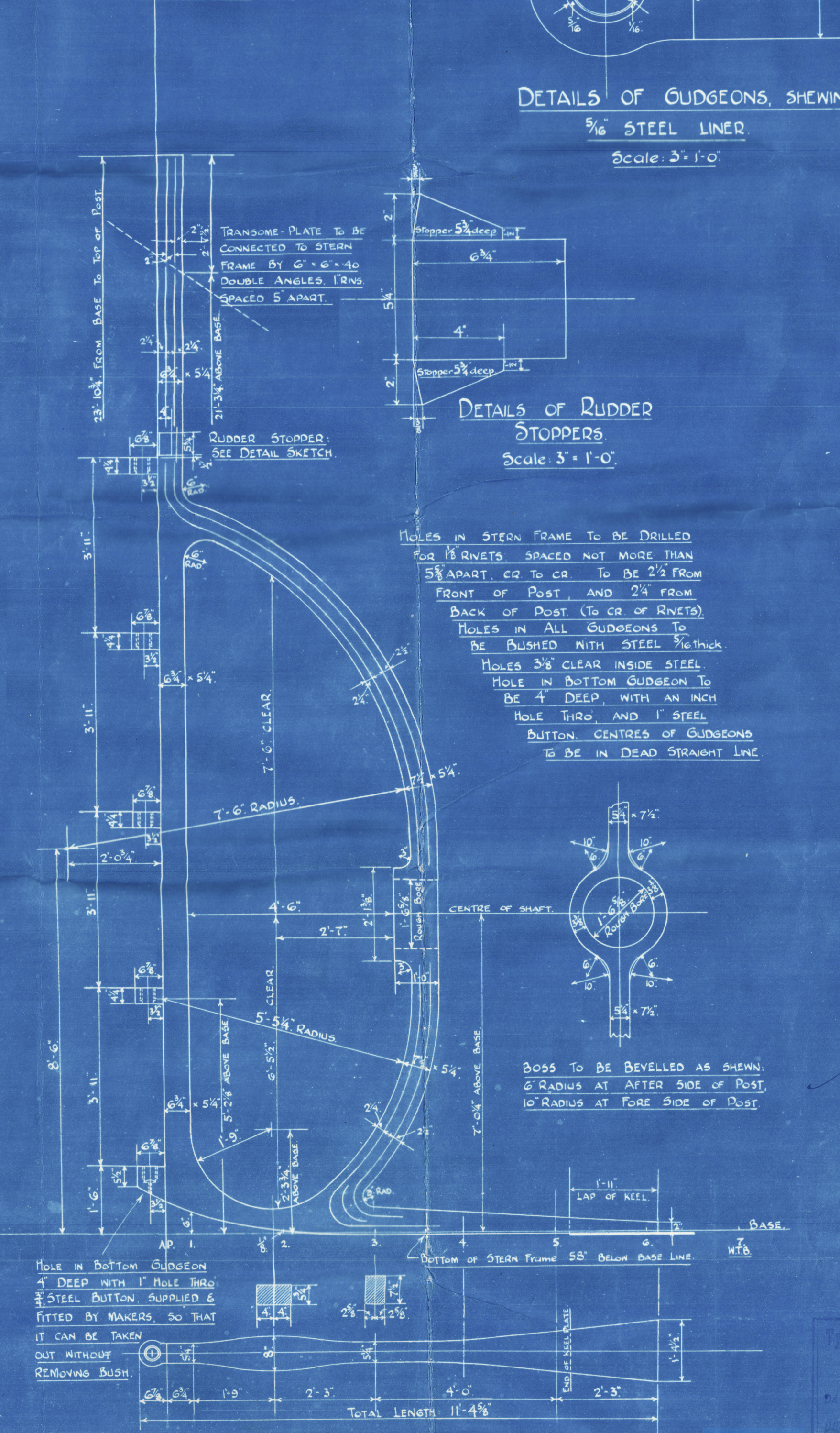
Speed not exceeding 10 knots.

## FORGED IRON STERN FRAME

S.S. 227

Scale: 1/2" = One Foot

(LLOYD'S SURVEY)  
1921-2. RULES.



DETAILS OF GUDGEONS, SHOWING  
1/8" STEEL LINER.  
Scale: 3" = 1' 0".

DETAILS OF RUDDER  
STOPPERS.  
Scale: 3" = 1' 0".

HOLES IN STERN FRAME TO BE DRILLED FOR 1/8" RIVETS SPACED NOT MORE THAN 5" APART. CQ. TO CR. TO BE 2 1/2" FROM FRONT OF POST AND 2 1/4" FROM BACK OF POST (TO CR. OF RIVETS). HOLES IN ALL GUDGEONS TO BE RIVETED WITH STEEL 3/8" THICK. HOLES 3/8" CLEAR INSIDE STEEL. HOLE IN BOTTOM GUDGEON TO BE 4" DEEP WITH AN INCH HOLE THRO. AND 1" STEEL BUTT. CENTRES OF GUDGEONS TO BE IN DEAD STRAIGHT LINE.

BOSS TO BE BEVELLED AS SHOWN. 6" RADIUS AT AFTER SIDE OF POST, 10" RADIUS AT FORE SIDE OF POST.

25.5.23.



Report No. 44804  
Lloyd's Register  
002816 - 002824 - 0060