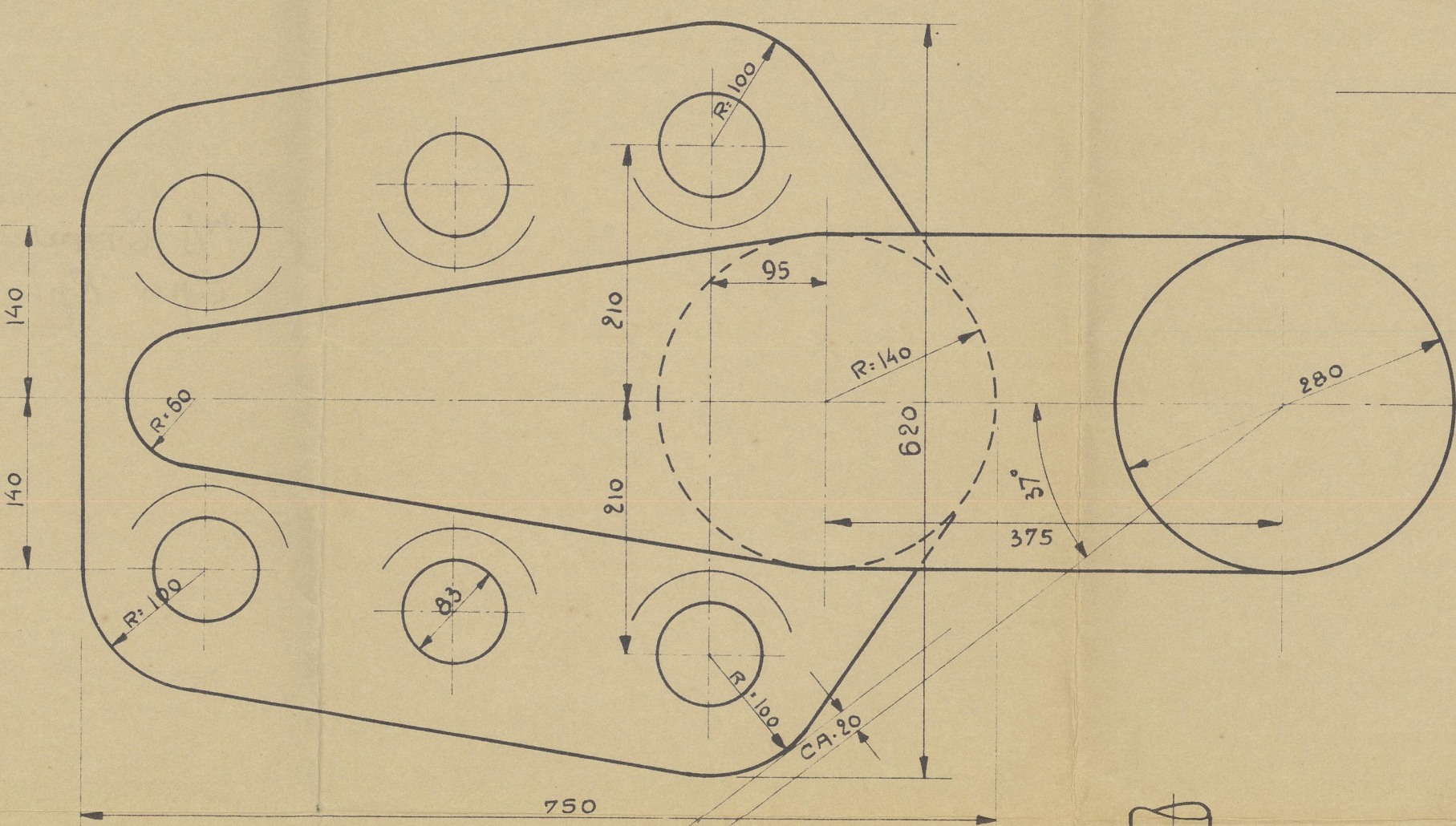
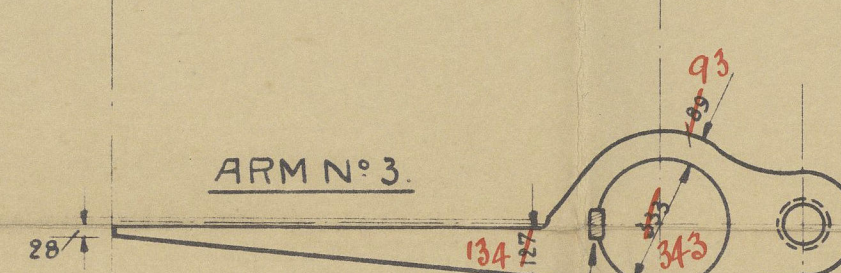
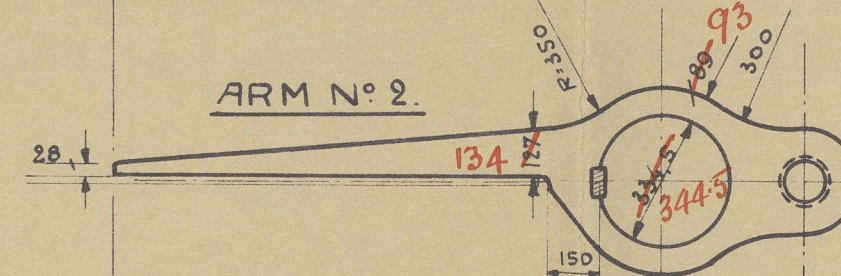
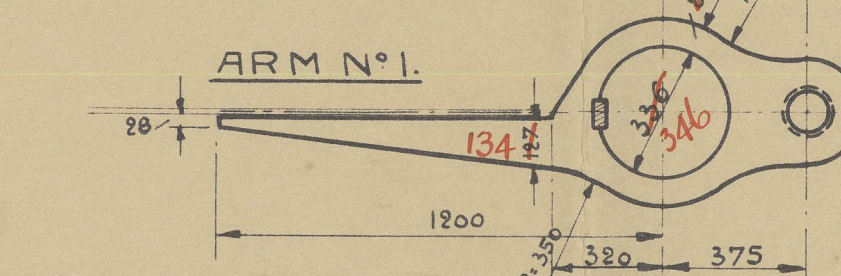
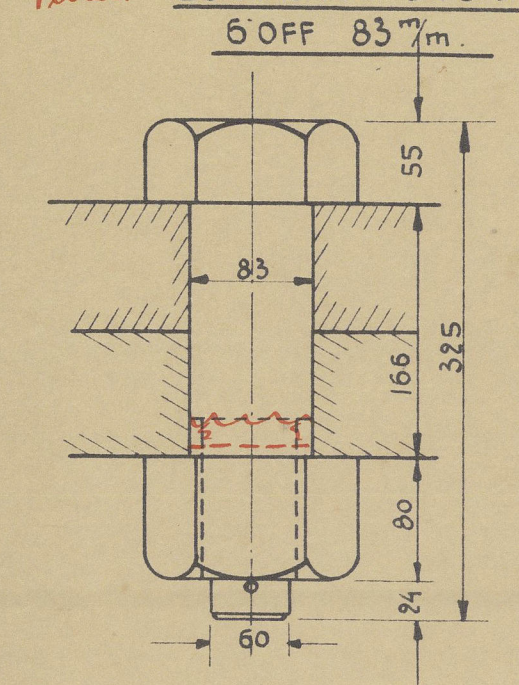
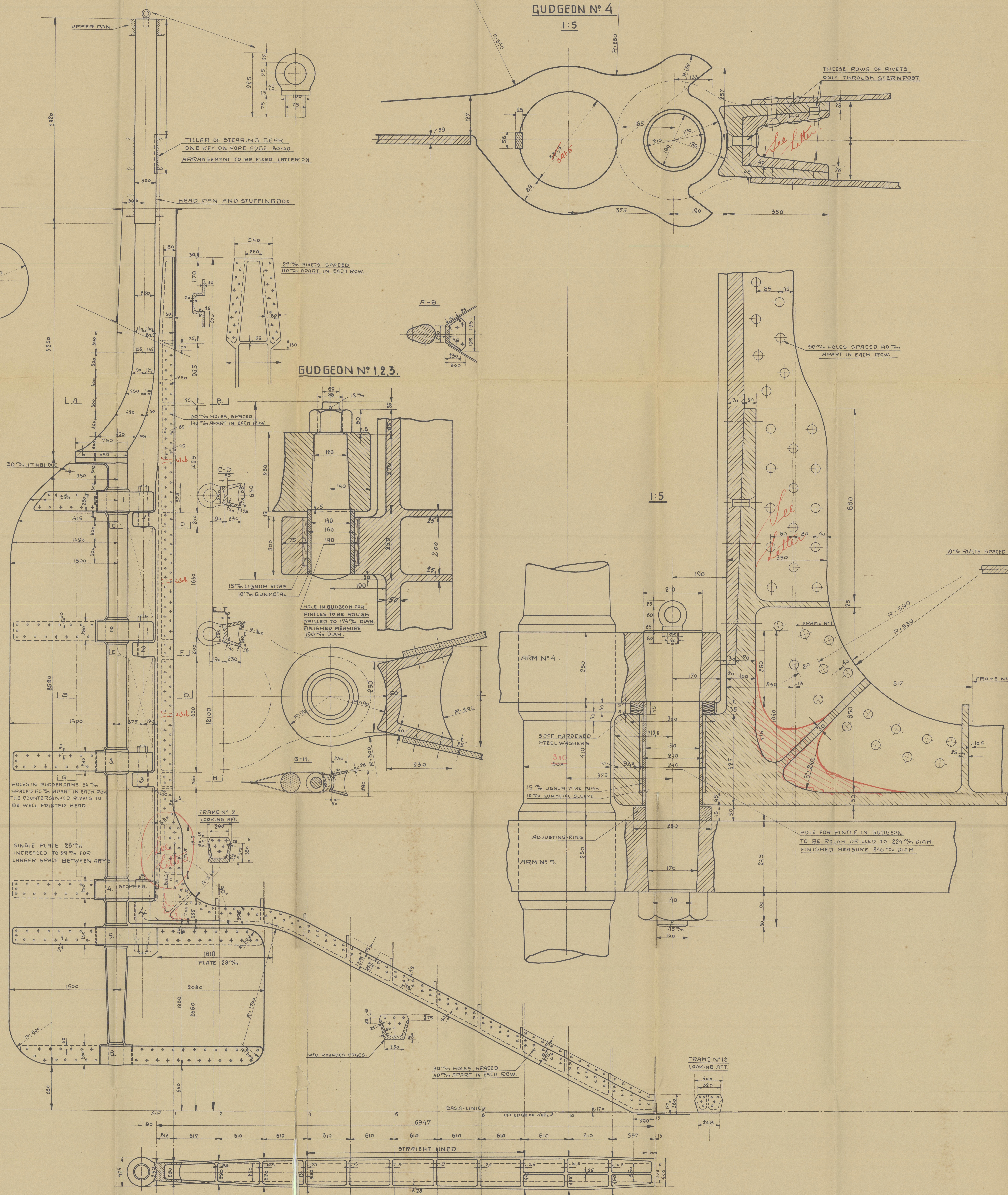
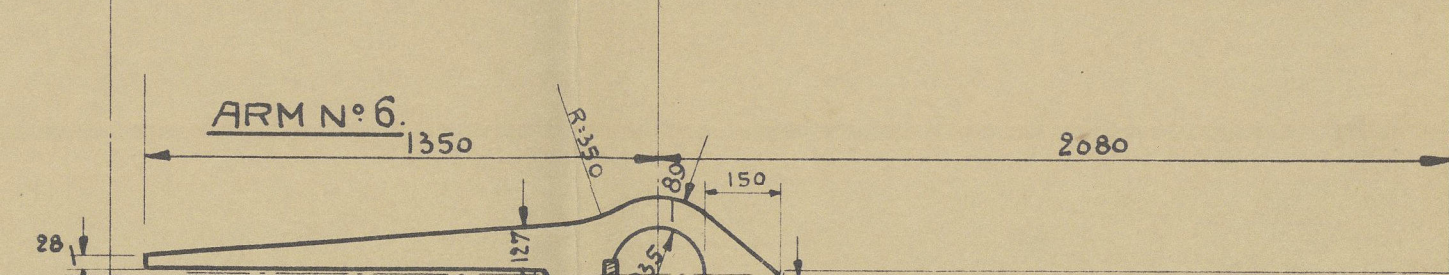
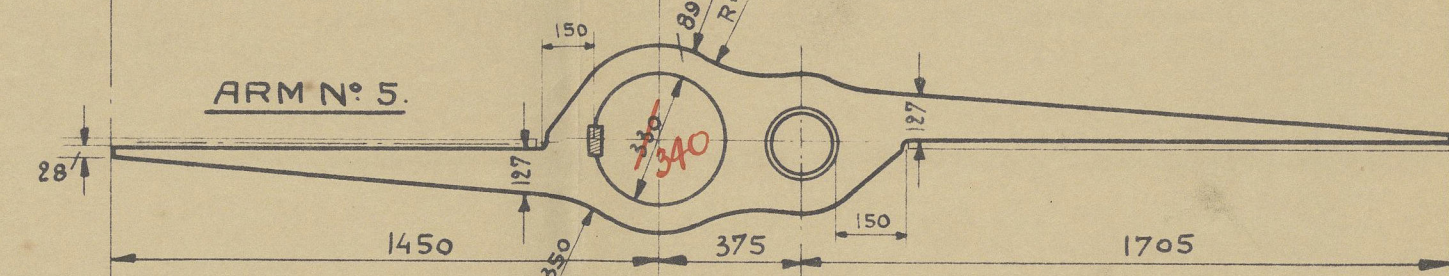
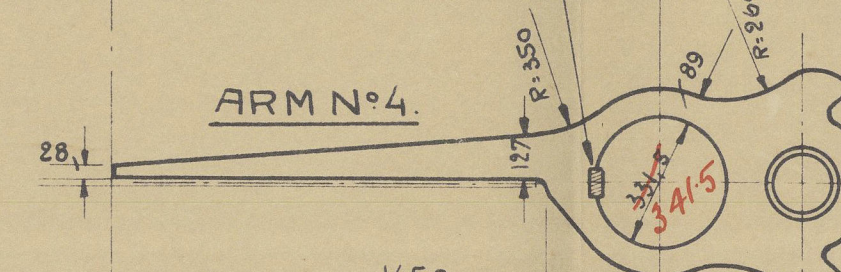


RUDDER-COUPPLING.

Fitted COUPLING BOLTS



ALL KEYS 56x28



SHIP N° 50
STERNPOST AND RUDDER.

SCALE = 1:20, 1:5.

MATERIAL
STERNPOST OF CAST STEEL
RUDDERHEAD AND MAINPIECE OF FORGED STEEL
ARMS OF FORGED STEEL SHRUNK ON AND KEYPED TO MAINPIECE
PINTLES OF STEEL WITH METAL BUSHES
LLOYDS CERTIFICATE TO BE DELIVERED
SPEED OF VESSEL 16 KNOTS
A.O. 1150
DIAM OF MAINPIECE 280" (RULES - 270")

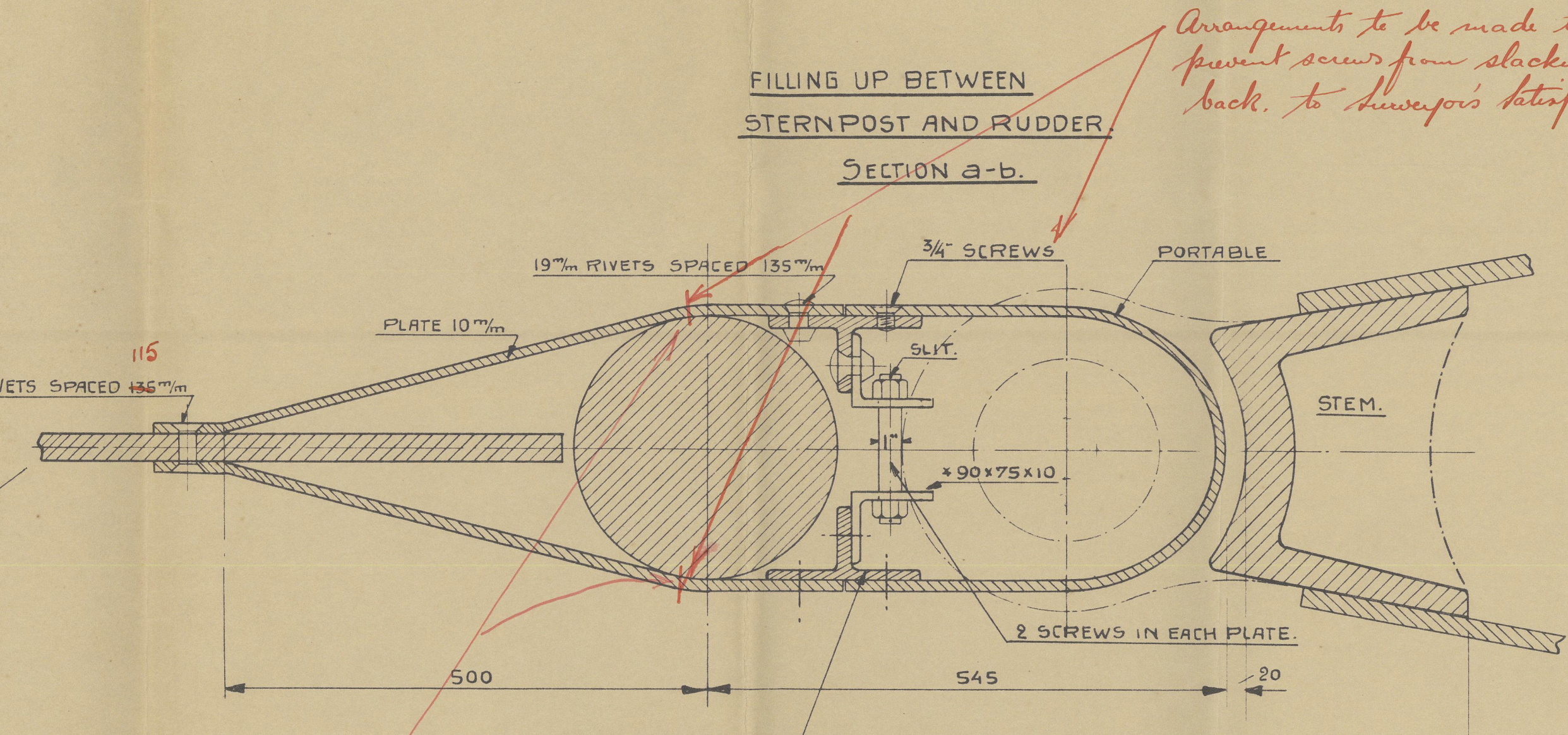
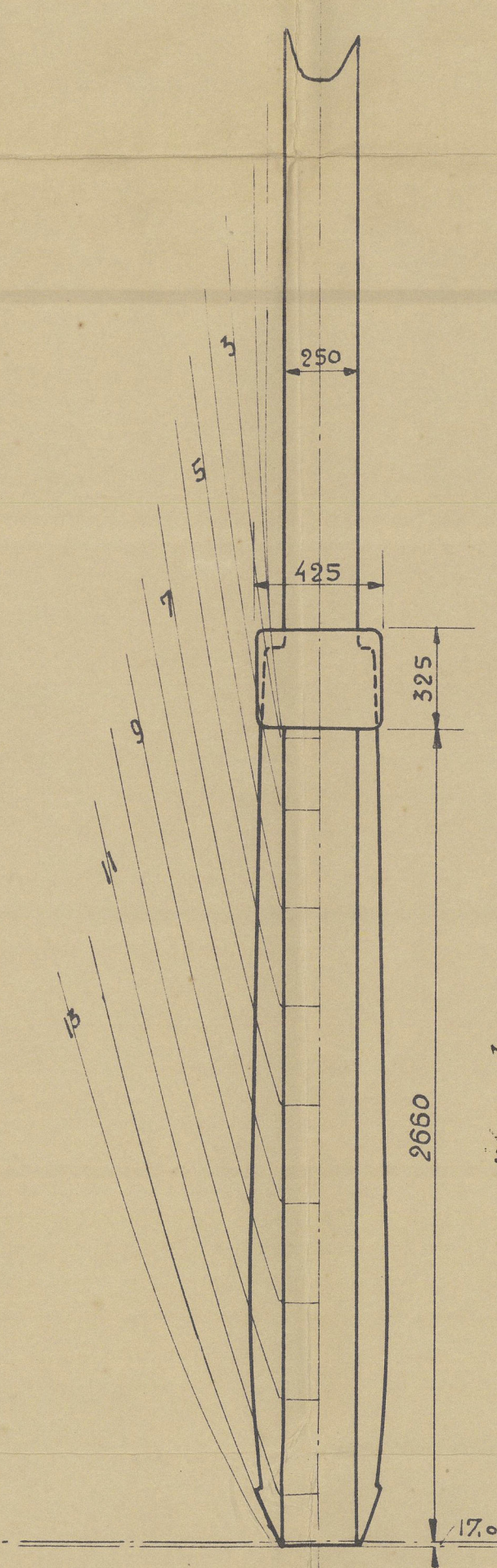


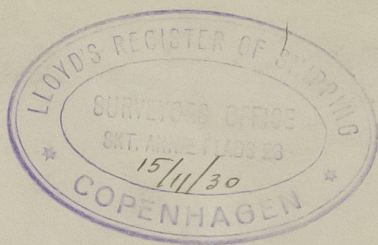
Plate tapped to stock,
to Swinerton's satisfaction

Arrangements of stream line Plates to be
such that the Knutles will always be
accessible.



11/30 3 LLOYD

BYGNING N° 50
AGTERSTÆVN OG ROP



Nakskov. Yard. N^o 50.

Sternpost. & Rudder.

See Later plan, submitted
& approved with different
type of Rudder

Copenhagen Office

m/s "Erria."

Eng. Rpt. No. 8689.



© 2020

Lloyd's Register
Foundation

002208-002815-0154