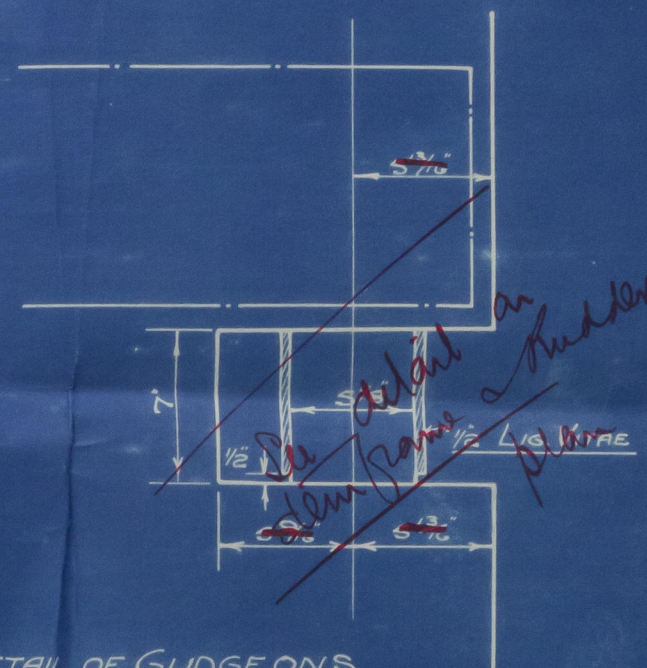


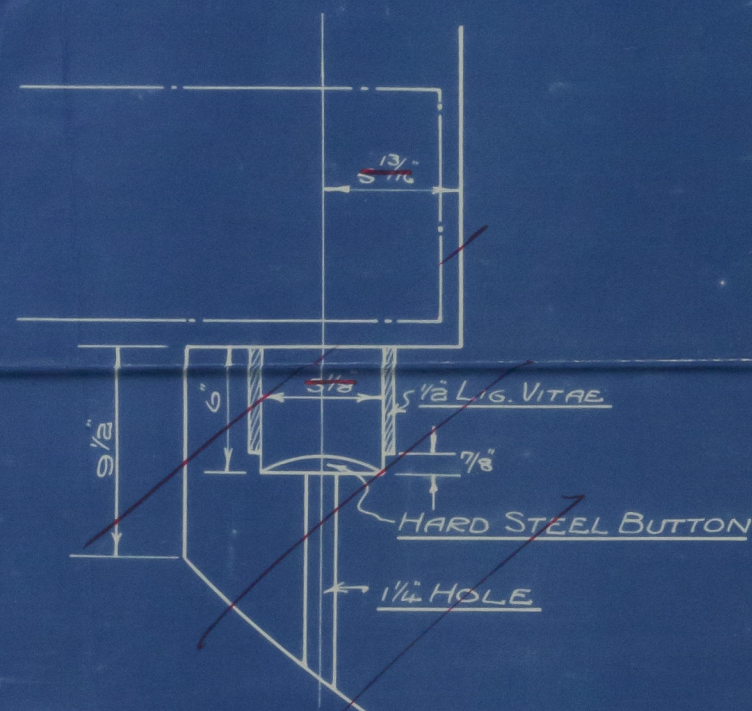
# STERNFRAME PLAN.

TO LLOYD'S TESTS.

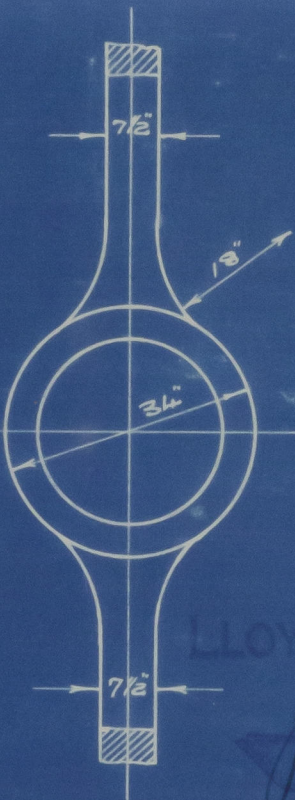
## MATERIAL-CAST STEEL.



### DETAIL OF GUDGEONS.



DETAIL OF BOTTOM GUDGEON.



Montgomery 30.10.73

NOTE:- THIN ENDS OF BOTH SCARPHS  
LEFT UN-BORED.

THIS ROW OF RIVS.  
TO BE C'S'K.

1 1/8" RIVS.  
1 3/16" HOLES

RIVET HOLES TO BE  
LEFT BLANK AND  
DRILLED BY SHIPBUILDERS.

MOULDS TO BE SUPPLIED FOR BOTTOM SECTIONS.

SECTION AT L.

### SECTION AT 5

BASE LINE (TOP OF KEEL PLATE.)

## SECTION AT 6

SECTION AT END



(<sup>a</sup> Hisakawa "Maru")

Stern & Rudder



© 2020

Lloyd's Register  
Foundation

002808-002815-0093