

30 APR 1945

Lloyd's Register of Shipping.

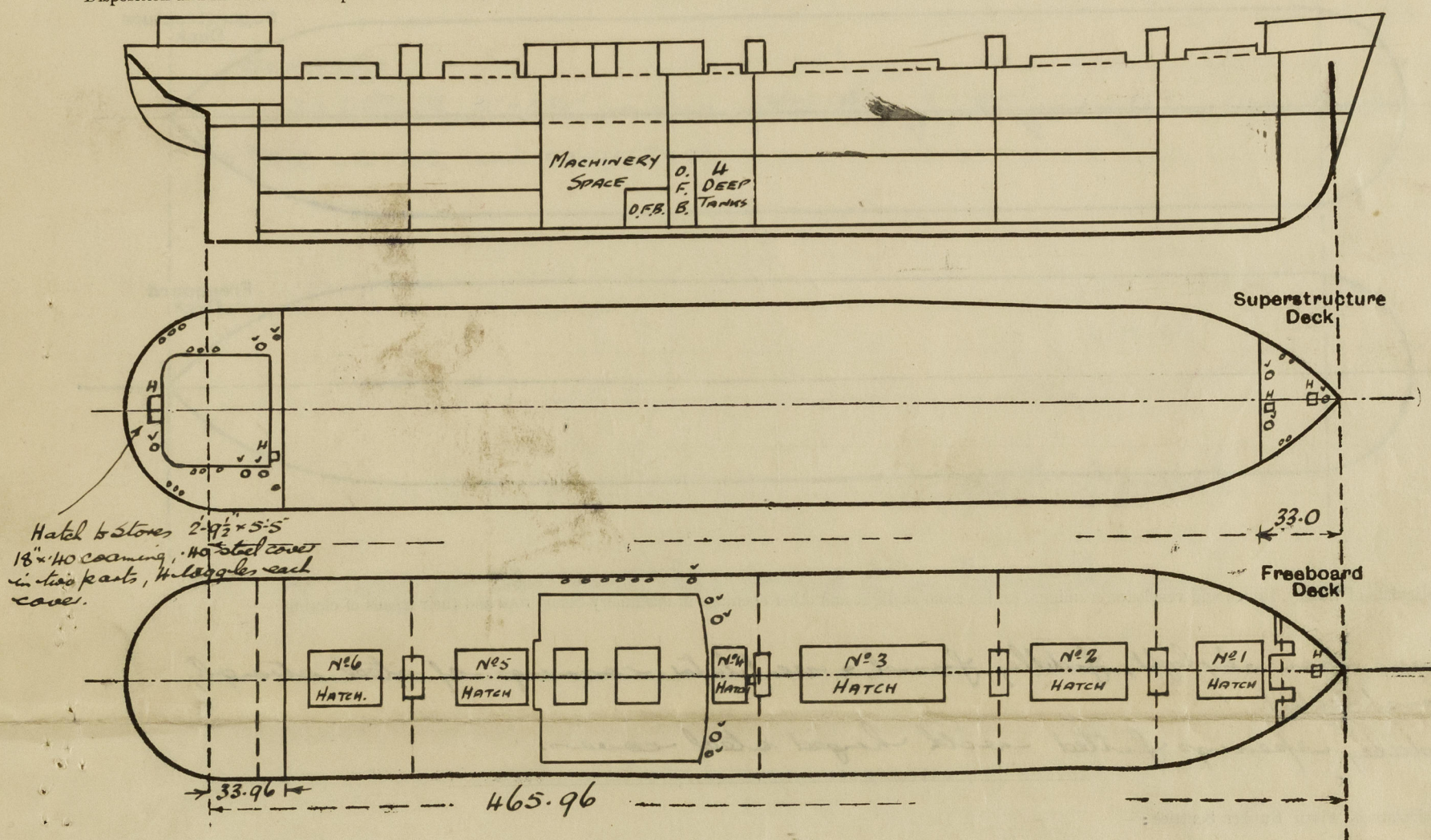
SURVEYS FOR FREEBOARD.

(CONDITIONS OF ASSIGNMENT.)

N^o 34193

Ship's Name S.S. EMPIRE ALLENBY. Port of Survey Sunderland.
 Official Number 180517 Surveyor's Signature W. E. L. Lilla
 Nationality and Port of Registry BRITISH, SUNDERLAND. Date of Survey During Construction.

Disposition and dimensions of superstructures, trunks, deckhouses and machinery casings to be inserted in the diagrams and tabular statement: -



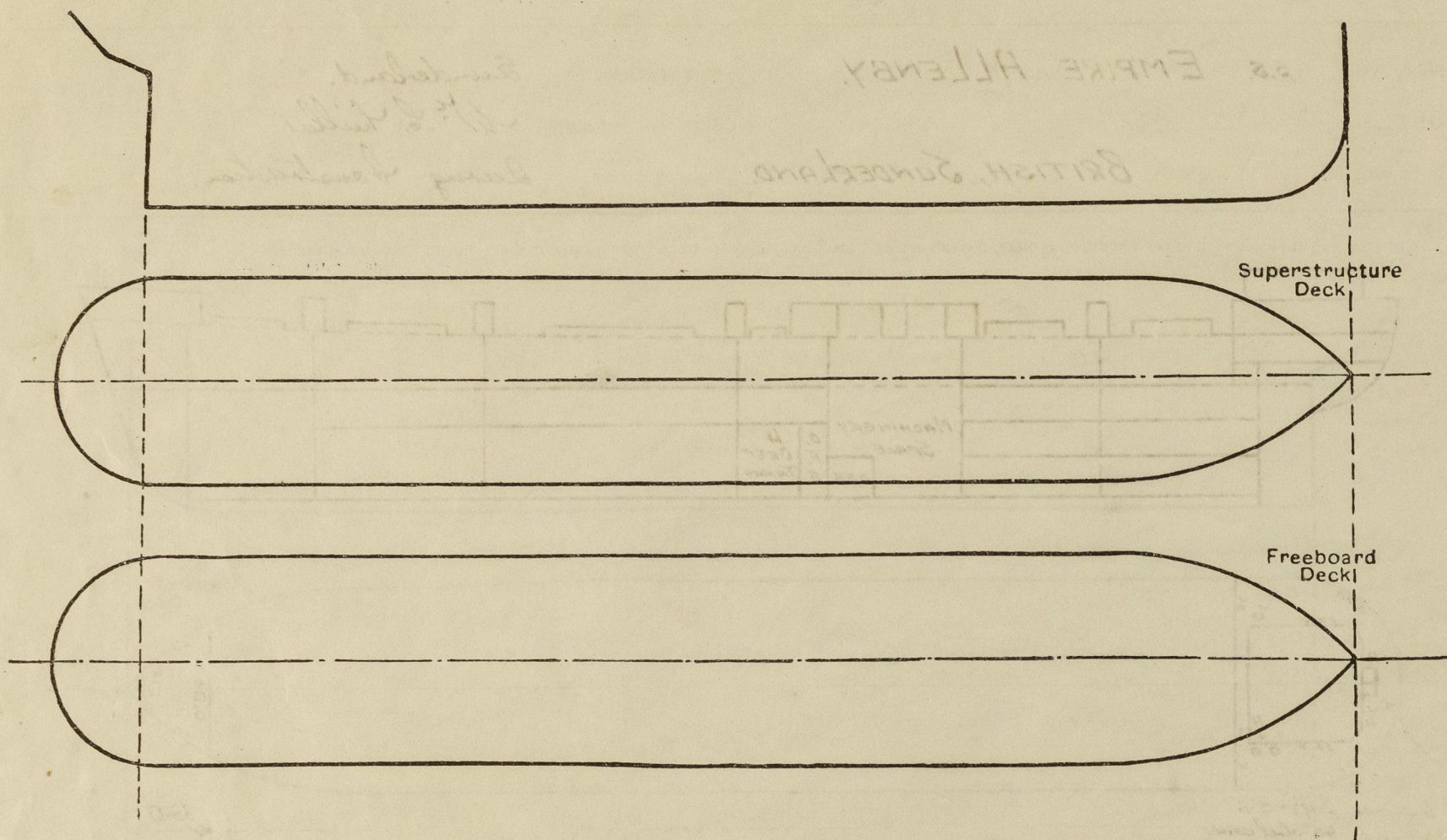
Particulars of Superstructures, Trunks, Casings, Deckhouses.								
	Coaming	Plating	Stiffeners	Spacing	End Attachments of Stiffeners	Size of Openings	Height of Sills	Height of Casings
Poop Bulkhead38	.38	6x3x30 L	30	Lugged	20 4'6" x 2'0"	18	7'6"
Raised Quarter Deck Bulkhead ...		✓						
Bridge, After Bulkhead ...		✓						
Bridge, Forward Bulkhead ...		✓						
Forecastle Bulkhead30	.26 x .30	5x3x3/8 6x3x3/8	30	Riveted to boundaries	20 4'1" x 3'1"	18	7'0"
Trunk, Aft ...		✓						
Trunk, Forward ...		✓						
Exposed Machinery Casings on Freeboard or Raised Quarter Decks ...		✓						
Exposed Machinery Casings on Superstructure Decks ...		✓						
Machinery Casings within Superstructures not fitted with Class I Closing Appliances ...	FRONT 3/8 SIDES .34	.32 .32	6x3x3/4 L 5x3x3/8 OA	32 1/2 33	Bldd do.	NONE. ✓	✓ ✓	✓ ✓
Deckhouses on Flush Deck Ships ...	END .34	.32	4x3x3/8 OA	34	do.	✓	✓	✓

Particulars of Closing Appliances (state if capable of being manipulated from both sides).

Poop Bulkhead ...	Hinged steel H.T. door operated from both sides. ✓
Raised Quarter Deck Bulkhead ...	✓
Bridge, After Bulkhead ...	✓
Bridge, Forward Bulkhead ...	✓
Forecastle Bulkhead ...	2 1/2" shifting boards in full height riveted channels. ✓
Exposed Machinery Casings on Freeboard or Raised Quarter Decks ...	✓
Exposed Machinery Casings on Superstructure Decks ...	✓
Machinery Casings within Superstructures not fitted with Class I Closing Appliances ...	✓
Deckhouses on Flush Deck Ships ...	1 3/4" teak door operated from both sides. ✓

PARTICULARS OF PROTECTION TO OPENINGS, ETC.

The following diagrams should be used to indicate the positions of cargo and coaling hatchways, gangway, cargo and coaling ports, ventilators, companionways, etc., which would affect the seaworthiness of the ship:—



Particulars of fiddley, funnel and ventilator coamings, engine room skylight and other openings in machinery casing tops and their means of closing:—

Engine room skylight, fiddley, funnel, & ventilator coamings of steel strongly constructed. ✓
 Fiddley openings fitted with hinged steel covers. ✓

Particulars of Flush Bunker Scuttles:—

NONE.

Particulars of Companionways:—

Escapes to Holds & Tween Decks in masts & houses etc, fitted with hinged steel W.T. doors, Inman Type, except for escape to No. 1 hold under t/c, which has an ordinary steel door. Coaming 21" in height.

Particulars of Ventilators in exposed positions on freeboard and superstructure decks:—

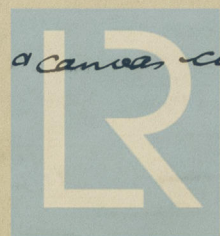
<u>POOP DECK.</u>	3-15" Vents to Accom.	Coaming 30" x 36" above wood deck
	1-12" " " "	" 30" x 34" " " "
	1-6" " " "	" 30" x 30" " " "
	13-5" G.N. Vents " "	18" b lip above wood deck.
<u>FORE DECK.</u>	1-24" Vent to Hold & Tween Decks	Coaming 36" x 40"
	1-12" " " Tween Decks	" 36" x 34"
	1-6" " " " "	" 36" x 30"
	4-5" G.N. " " Stores etc.	18" b lip.
<u>UPPER DECK.</u>	2-24" Vents to Tween Decks	Coaming 36" x 40"
	2-6" " " Deep Tanks	" 36" x 30"
	6-5" G.N. " " Stores	36" b lip.

Ventilators fitted with wood plug & canvas covers ✓

Particulars of Air Pipes in exposed positions on freeboard, raised quarter, or superstructure decks:—

Air pipes to D.B. & peak tanks on Poop & Fore Decks 18" b lip.
 Air pipes to D.B. tanks on Upper Deck 30" b lip.

Air pipes fitted with wood plug or gauze & canvas covers.



© 2020

Lloyd's Register
Foundation

Particulars of Gangway Cargo and Coaling Ports :—

NONE.

Particulars of Scuppers and Sanitary Discharge Pipes :—

6-5" x 2 1/2" scuppers cut in stringer angle, P.S., to drain upper deck. ✓
 Discharges from spaces above upper deck, led to N.R. valves in Tween deck. ✓
 Discharges from spaces below upper deck, led to double N.R. valves. ✓
 Discharges from refrigerating spaces, led to E.R. bilge, plugged & trapped at top, open ended at bilge. ✓
 Scuppers from Tween deck, led to hold bilge, open ended. ✓
 Scuppers from Magazine in Crew Flat aft, below upper deck, led to Tunnel well, ~~open ended~~
 with self closing cock. ✓

Particulars of Side Scuttles :—

10" dia. sidelights to Crew Accommodation in Tween Deck aft, fitted with substantial hinged deadlights. ✓

Vertical distance of Sill of lowest Side Scuttle above top of keel

43'-6" ✓

Particulars of Guard Rails :—

Bulwark in way of deckhouse, 90'-9" x 3'-6" x 25", rail has 6 x 3 1/2 x 34 L, lower edge of bulwark 2" above top of sheerstrake. On remainder of upper deck rails 3'-6" high, 3 rods, stanchions about 5'-0" apart. On Poop & Fore Deck, rails 3'-3" high 3 rods, stanchions 5'-0" apart. ✓

Particulars of Gangways, Lifelines, etc. :—

1 lifeline supplied, from Poop to deckhouse, & from deckhouse to Fore, with fittings P.S. ✓

Particulars of Freeing Arrangements.						
	Length of Bulwark	Height of Bulwark	Size of Freeing Ports	Number each side	Area each side	Rule area each side
After Well	90'-9"	3'-6"	Bulwark kept 2" above sheerstrake ✓			
Forward Well						
State position of each freeing port { After Well :— ✓						
(F. and A. position and height above deck edge) { Forward Well :— ✓						
State whether the freeing ports are fitted with shutters, bars, or rails, and give particulars of such :— ✓						
Additional area where sheer is less than standard. ✓						



© 2020

Lloyd's Register Foundation

PARTICULARS OF PROTECTION TO OPENINGS, ETC.

HATCHWAYS ON FREEBOARD AND SUPERSTRUCTURE DECKS.										
Description of Hatchway		Nº1	Nº2	Nº3	Nº4	Nº5	Nº6	F. Peak Hatch to Store	F.C. LE DECK Hatch to T. Deck	POOP DECK Hatch to Magazine
Dimensions of Hatchway		20'3" x 16'	33' x 21'	52'3" x 21'	10'3" x 21'	35'9" x 21'	27'6" x 21'	4' x 3'	3'9" x 2'6"	2'6" x 2'6"
COAMINGS	Height above Deck	30"	30"	30"	30"	42"	42"		24"	24"
	Thickness	44"	44"	50"	44"	44"	44"	9"	40"	40"
	Stiffeners	9" x 11" L	9" x 11" L	12" x 11" L	9" x 11" L	9" x 11" L	9" x 11" L			
	Brackets, Stays	2	3	5	1	3	2			
HATCH BEAMS	Number	3	5	8	1	5	4			
	Spacing	equal	equal	equal	equal	equal	equal			
	Scantling and Sketch	3 1/2 x 3 x 42	5 x 3 x 3/8	5 x 3 x 3/8	5 x 3 x 3/8	5 x 3 x 3/8	5 x 3 x 3/8	✓	✓	✓
	Bearing Surface	1 1/4 x 3/4	2 1/2 x 3/8	1 1/2 x 3/8	1 1/4 x 3/4	1 7/8 x 3/8	1 5/8 x 3/8			
FORE AND AFTERS	Number									
	Spacing									
	Unsupported Lengths									
	Scantling and Sketch									
HATCH COVERS	Material	W.W.						W.W.	40 Steel	do.
	Thickness	3"						2 1/2"	W.T. covers	do.
	How fitted	F.A.	do.	do.	do.	do.	do.	F.A.	8 laggles	do.
	Bearing Surface	3" x 5"						2 1/2"		10 laggles
Spacing of Cleats		24"						24"		
Number of Tarpaulins		2						1	✓	

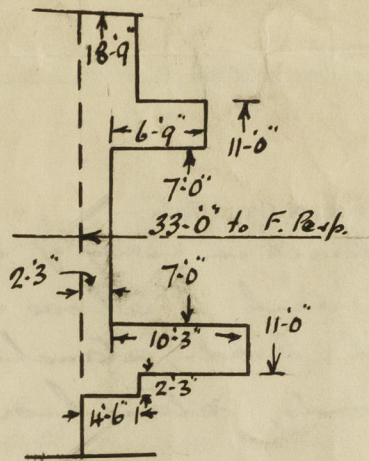
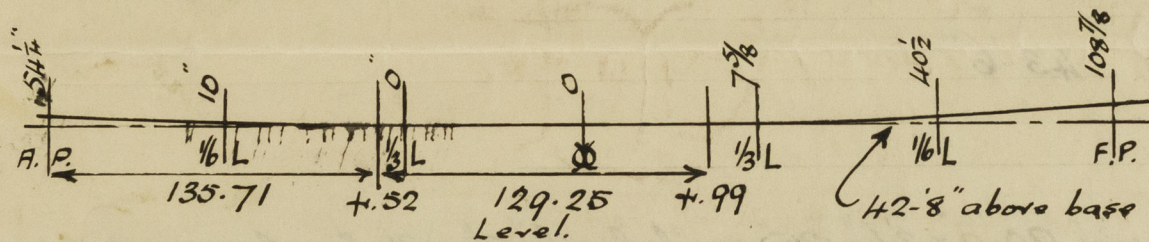
*Are wood fore and afters steel shod at all bearing surfaces? ✓

Are battens and wedges efficient and in good condition? YES.

Are tarpaulins in good condition and in accordance with rule requirements? YES.

Are lashings provided in accordance with rule requirements? YES lashing has fitted

Particulars of any special features:—



Endorsement at first survey and at surveys for renewal of Certificate:—

The fittings and appliances are in accordance with the particulars shown on this form (or as now modified) and are in good condition.



© 2020

Lloyd's Register Foundation