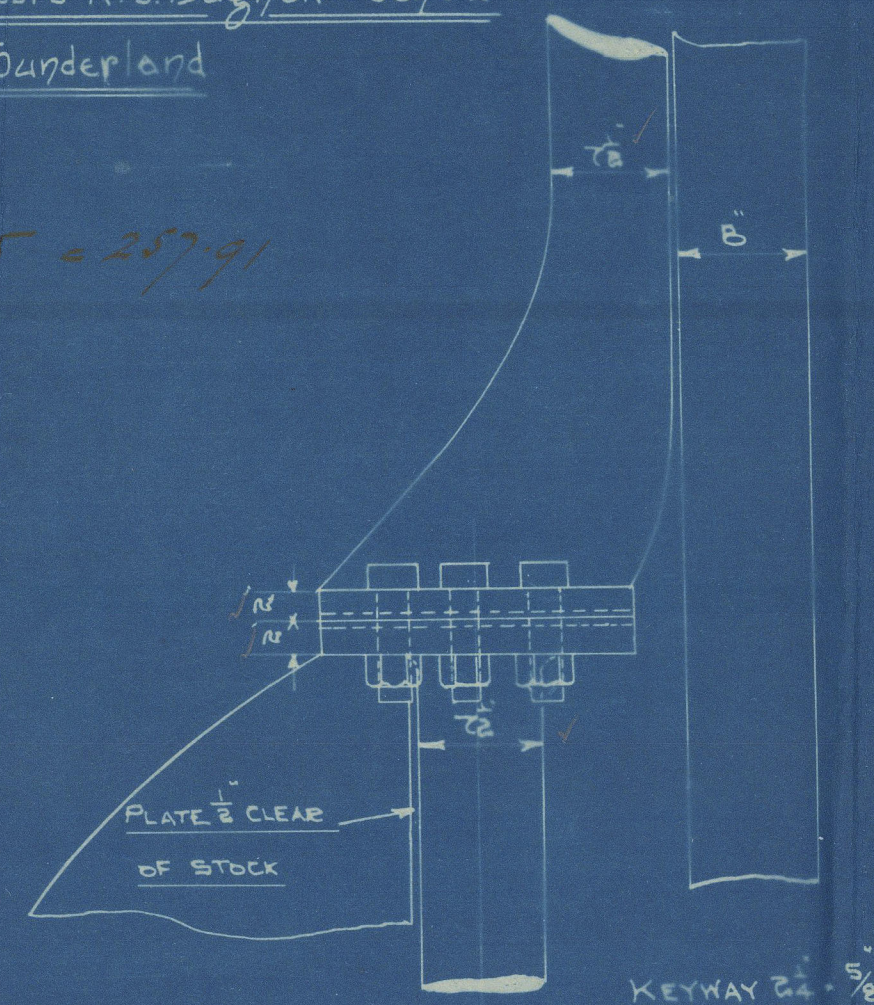


Rudder Frame

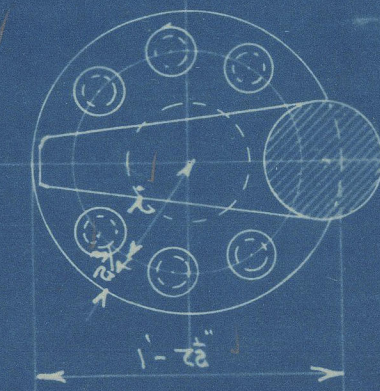
Wrought Iron
Class 100 Al Lloyds
Scale $\frac{1}{2}$ " = 1 foot.

To be manufactured by Messrs R S Bagnall & Sons Ltd
Hylton, Sunderland

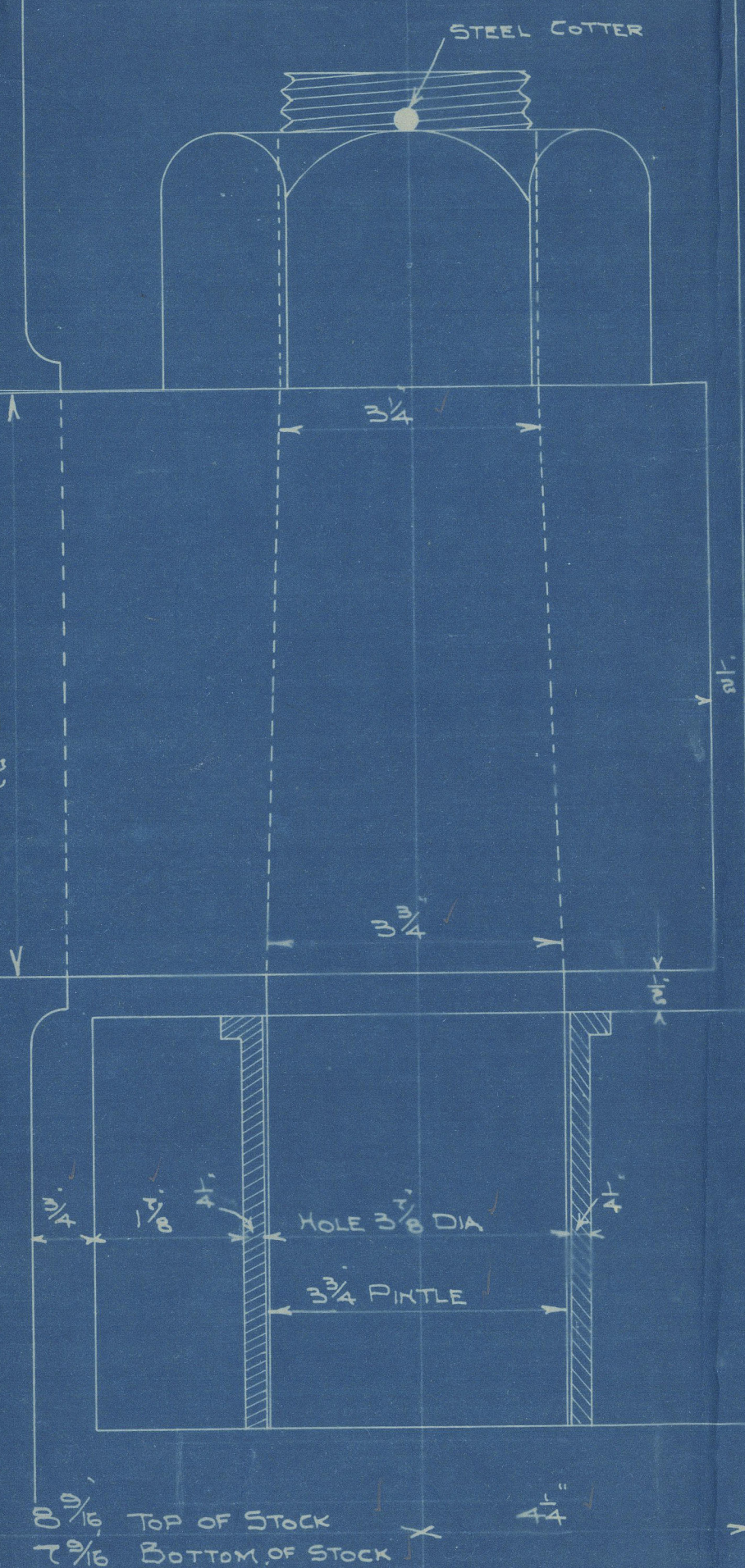
Process 8743-244-257-91



6-2 BOLTS

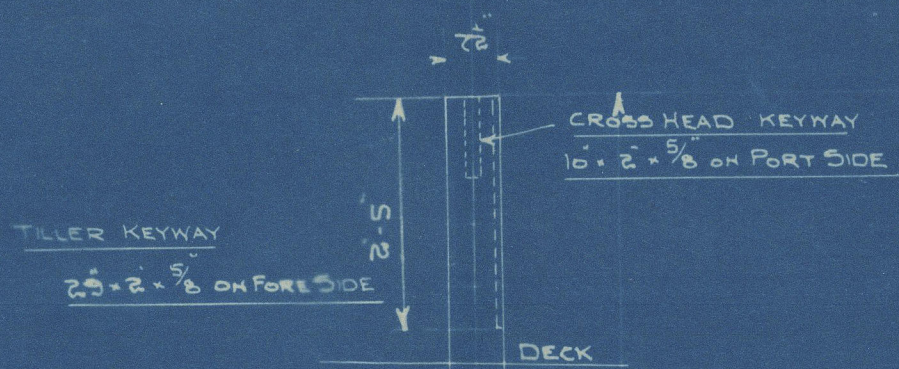


STEEL CUTTER



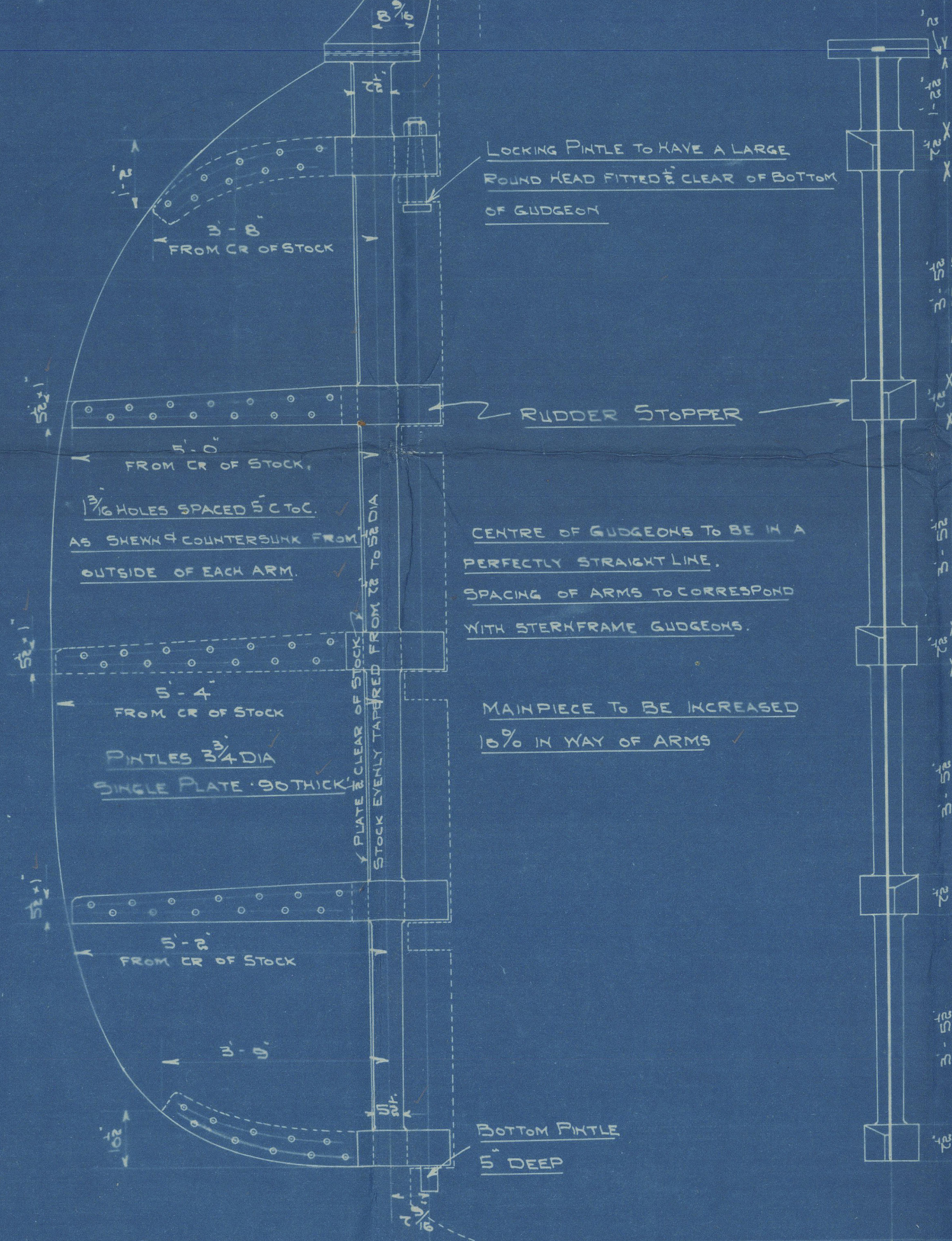
8 3/16 TOP OF STOCK
7 3/16 BOTTOM OF STOCK

S.S. No 244



AREA OF RUDDER = 87.43
CENTRE OF GRAVITY = 2.95
SPEED NOT EXCEEDING 16 KNOTS
NUMERAL = 257-91

DIAMETER OF WHEEL = 5.6



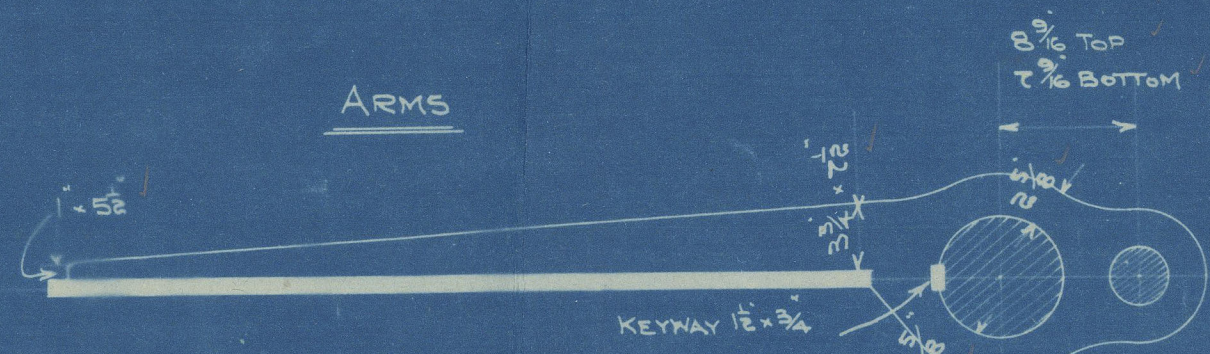
LOCKING PINTLE TO HAVE A LARGE
ROUND HEAD FITTED 1/8 CLEAR OF BOTTOM
OF GUDGEON

CENTRE OF GUDGEONS TO BE IN A
PERFECTLY STRAIGHT LINE.
SPACING OF ARMS TO CORRESPOND
WITH STERNFRAME GUDGEONS.

MAINPIECE TO BE INCREASED
10% IN WAY OF ARMS

BOTTOM PINTLE
5" DEEP

ARMS

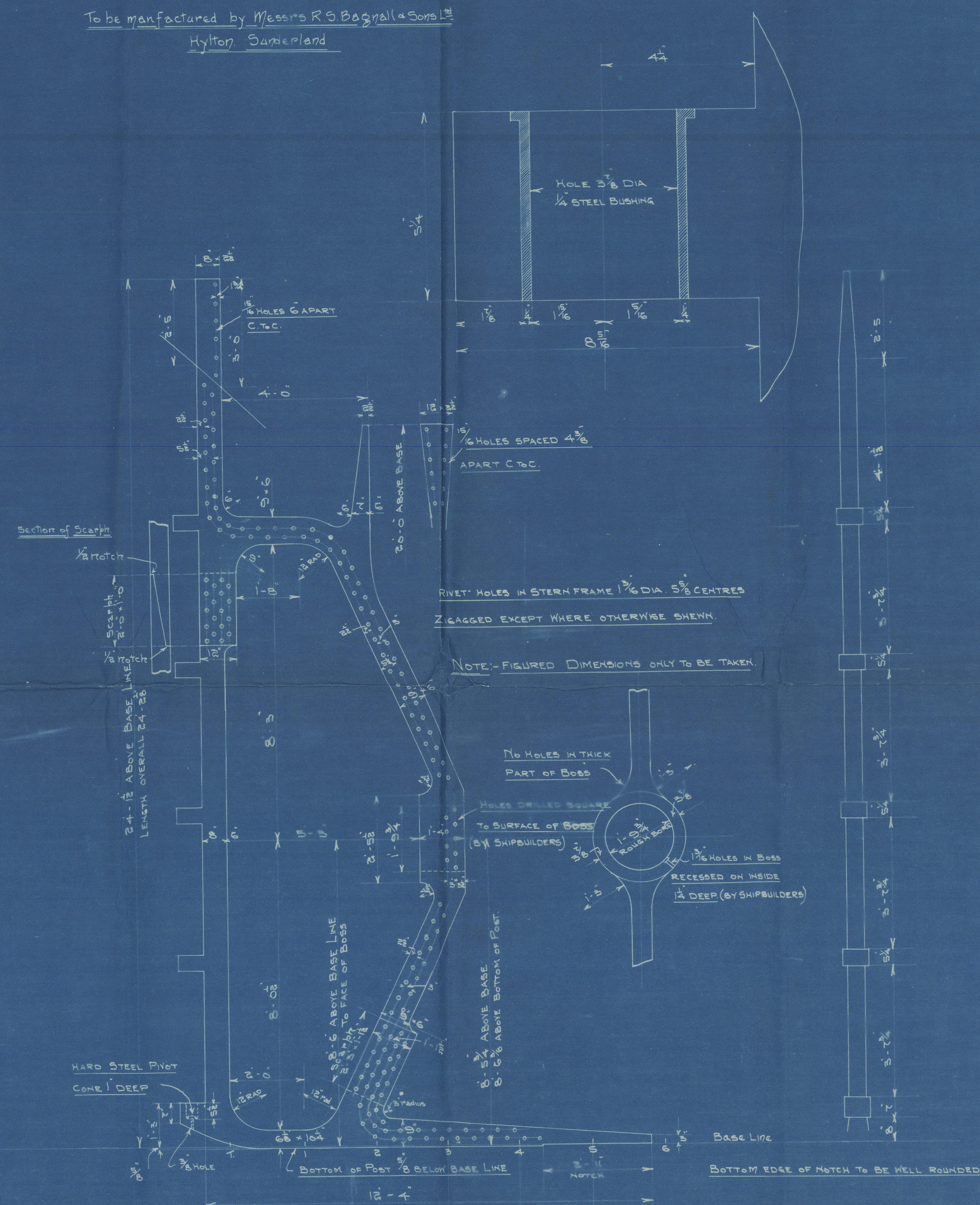


STOPPER:- SEE FULL SIZE DETAIL SKETCH.

Stern Frame

Wrought Iron
Class 100 Al Lloyds
Scale $\frac{1}{2}$ " = 1 foot.

To be manufactured by Messrs R S Bagnall & Sons Ltd
Hylton, Sunderland



HOLE 3/8 DIA
1/4 STEEL BUSHING

6 HOLES SPACED 4 3/8
APART C.T.C.

RIVET HOLES IN STERN FRAME 1 3/8 DIA 5 3/8 CENTRES
ZIGZAGGED EXCEPT WHERE OTHERWISE SHOWN.

NOTE:- FIGURED DIMENSIONS ONLY TO BE TAKEN.

NO HOLES IN THICK
PART OF BOSS

HOLES DRILLED SQUARE
TO SURFACE OF BOSS
(BY SHIPBUILDERS)

1 3/8 HOLES IN BOSS
RECESSED ON INSIDE
1/2 DEEP (BY SHIPBUILDERS)

24-12 ABOVE BASE LINE
LENGTH OVERALL 24-28

24-12 ABOVE BASE LINE
LENGTH OVERALL 24-28

24-12 ABOVE BASE LINE
LENGTH OVERALL 24-28

24-12 ABOVE BASE LINE
LENGTH OVERALL 24-28

24-12 ABOVE BASE LINE
LENGTH OVERALL 24-28

24-12 ABOVE BASE LINE
LENGTH OVERALL 24-28

24-12 ABOVE BASE LINE
LENGTH OVERALL 24-28

24-12 ABOVE BASE LINE
LENGTH OVERALL 24-28

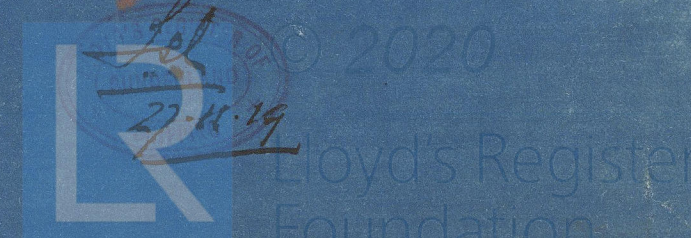
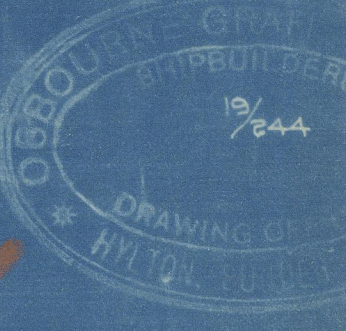
24-12 ABOVE BASE LINE
LENGTH OVERALL 24-28

24-12 ABOVE BASE LINE
LENGTH OVERALL 24-28

24-12 ABOVE BASE LINE
LENGTH OVERALL 24-28

24-12 ABOVE BASE LINE
LENGTH OVERALL 24-28

24-12 ABOVE BASE LINE
LENGTH OVERALL 24-28



002190-002797-0192

SUNDERLAND.

MESS^{RS} OSBOURNE GRAHAM & CO.

STERNEFRAME & RUDDER

No. 244

P. N. A. B

SUNDERLAND RPT. NO. 28212



© 2020

Lloyd's Register
Foundation

002790-002797-0192