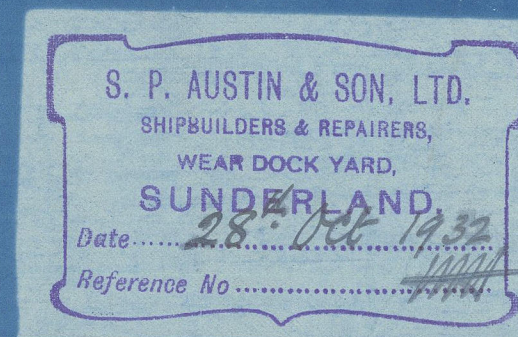


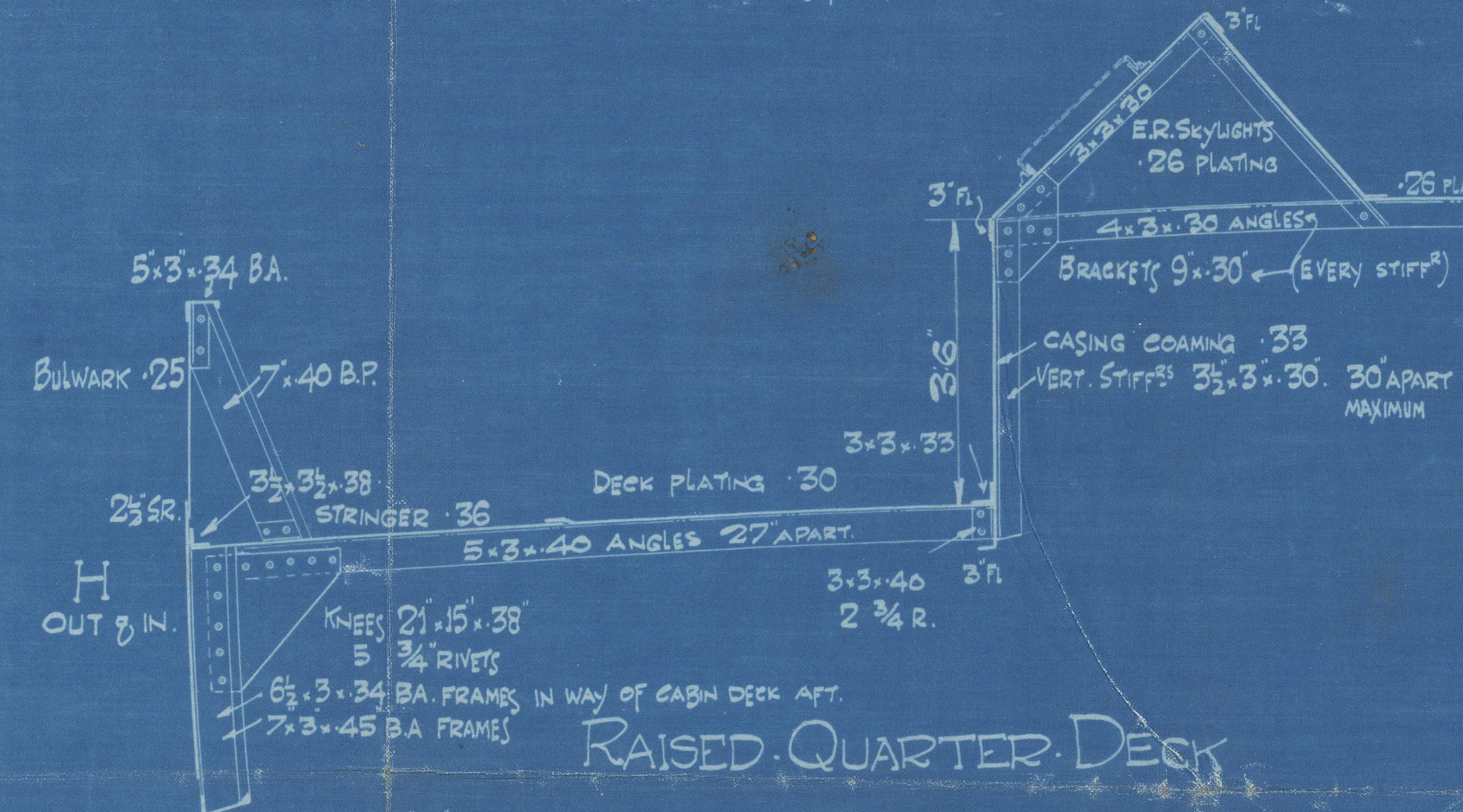
LLOYDS NUMERALS ETC

LENGTH ON L.W.L	226.80	EQUIPMENT NUMERALS		EQUIPMENT	
BREADTH MLD	36.25	LONG NO	12181.00	2	POWER ANCHORS EACH 28 cwt steelless
DEPTH MLD	17.46	RQR DR	138.0-3.42	1	BOWER ANCHOR 24 cwt steelless
L x B	36.25	BRIDGE	15.75-7.75	1	STEAM ANCHOR 6 cwt steelless
L x D	12.181	FORECASTLE	21.6-6.75	20	FATHOMS CABLE 1 1/2 STUD LINK
L x D	14.5	CASINGS	37.6-29.5	90	FATHOMS STEAM CHAIN 1 1/2 STUD LINK
L x D	17.91	HOUSE AFT	12-17.50	90	FATHOMS TOWLINE 1 1/2 WIRE
L x D	12.99	HOUSE AFT	12-17.50	90	FATHOMS HANSEER 1 1/2 WIRE
L x D	10.86	HOUSE AFT	12-17.50	90	FATHOMS WARP 1 1/2 WIRE
		EQUIPMENT NO 12937.45			

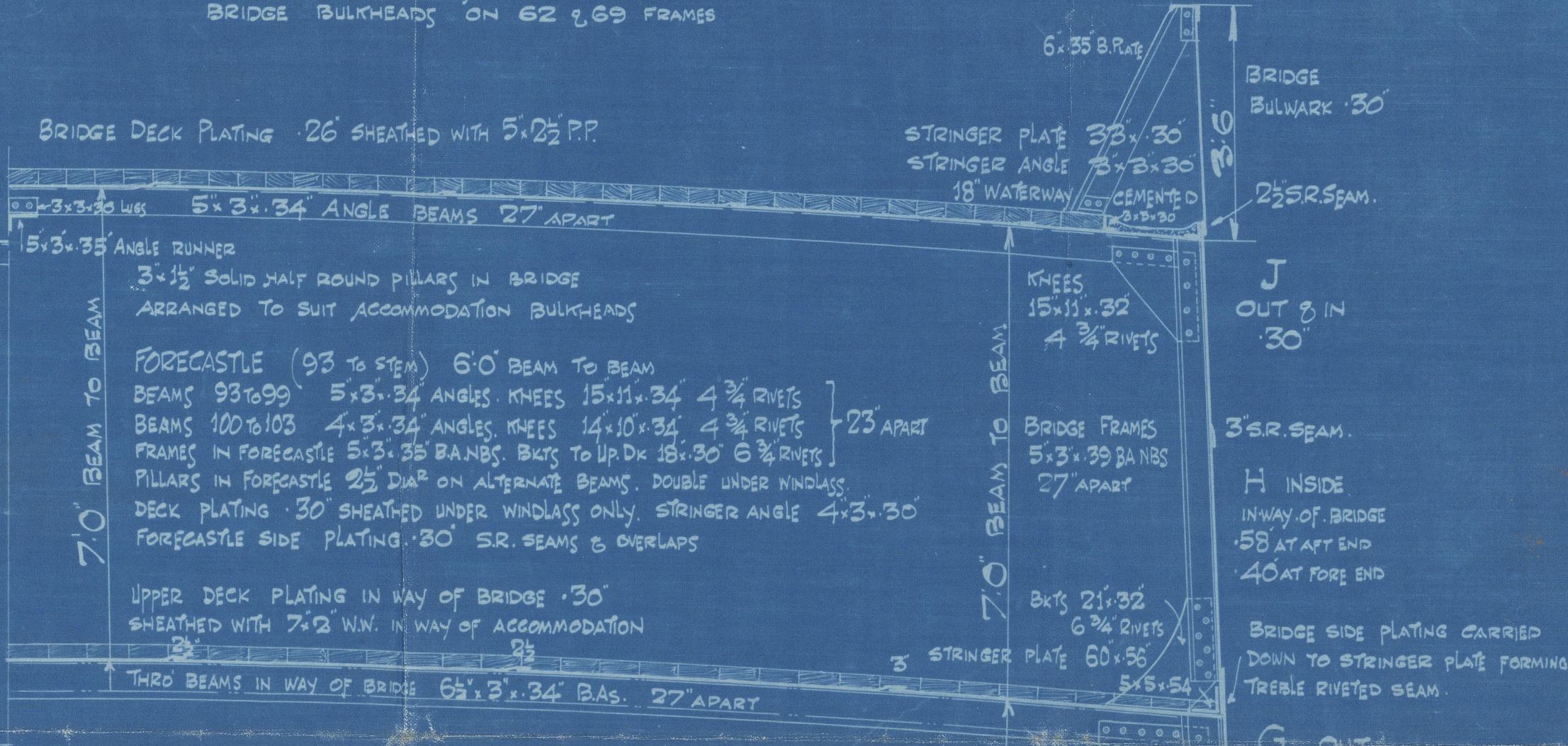
EQUIPMENT NO 12937.43



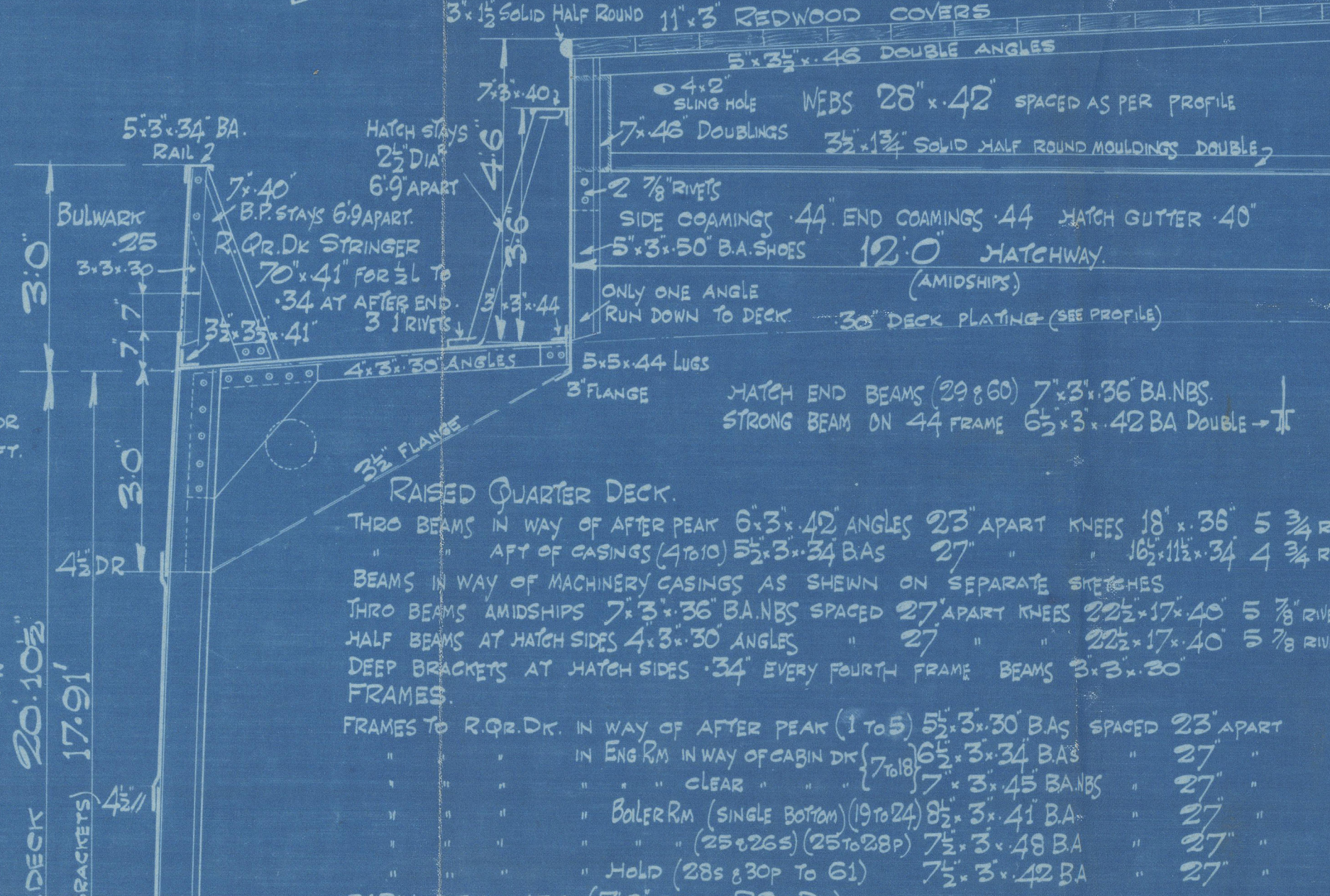
SECTION IN WAY OF ENGINE CASING



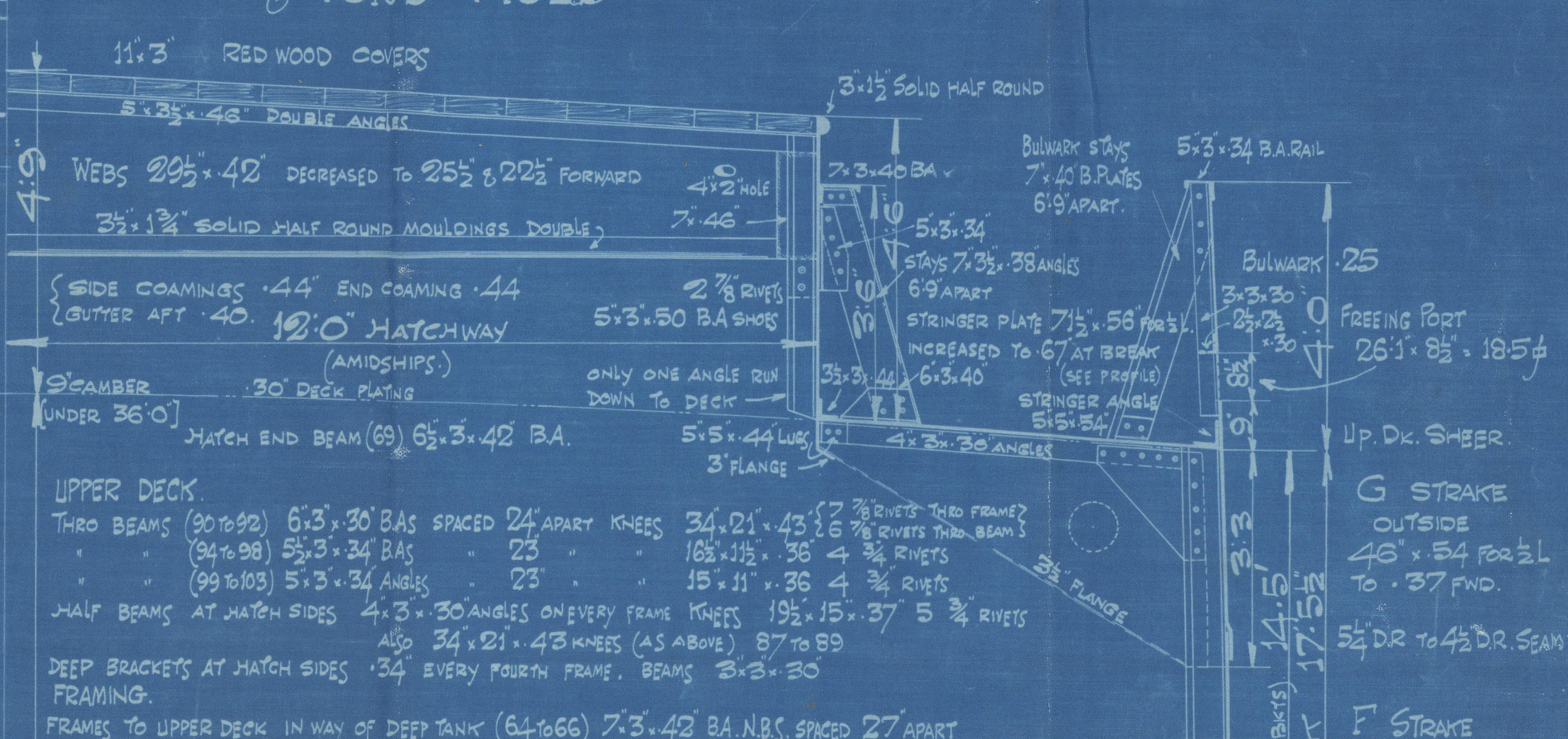
SECTION IN WAY OF BRIDGE



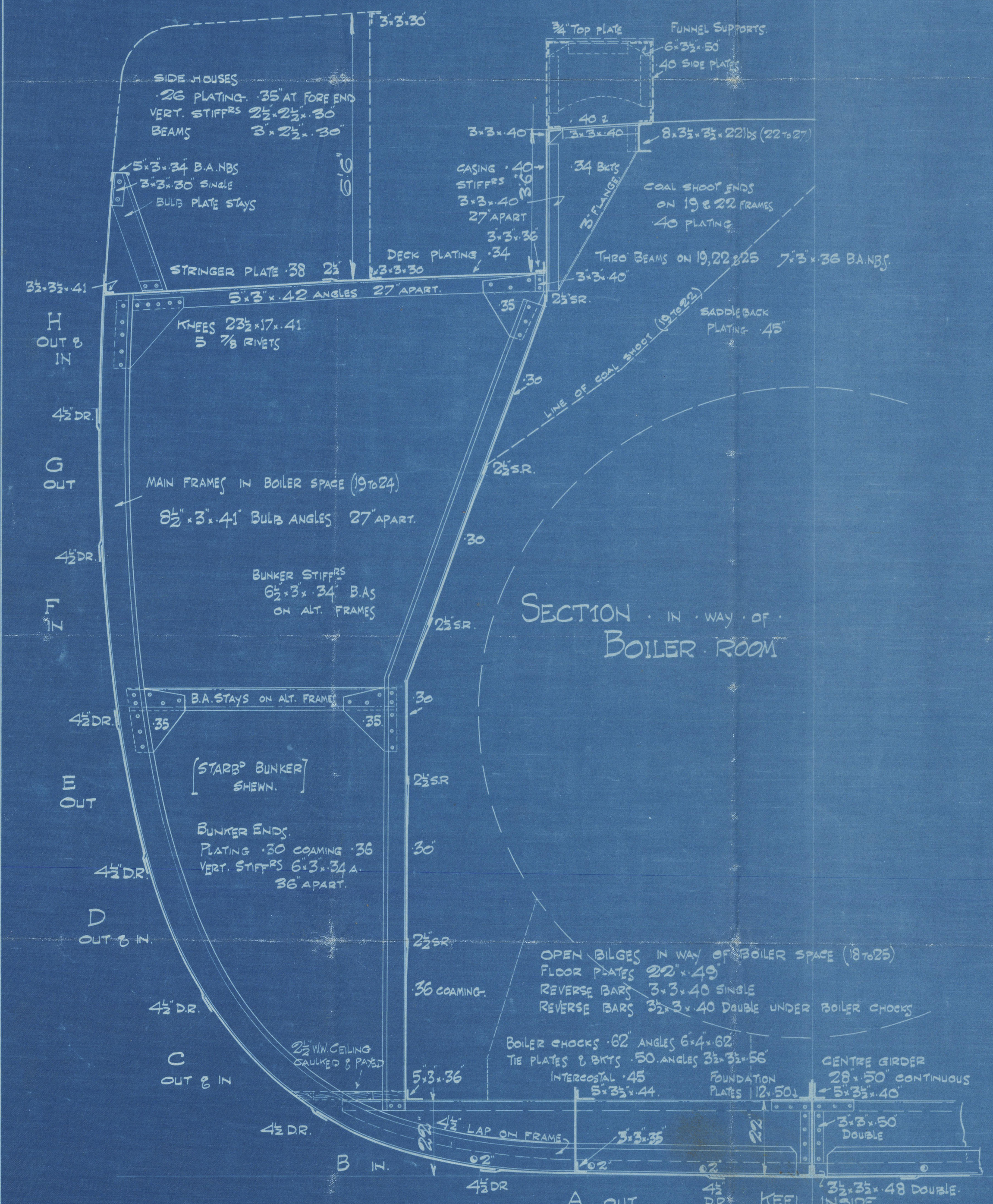
RAISED QUARTER DECK



UPPER DECK & FORE HOLD



SECTION IN WAY OF BOILER ROOM



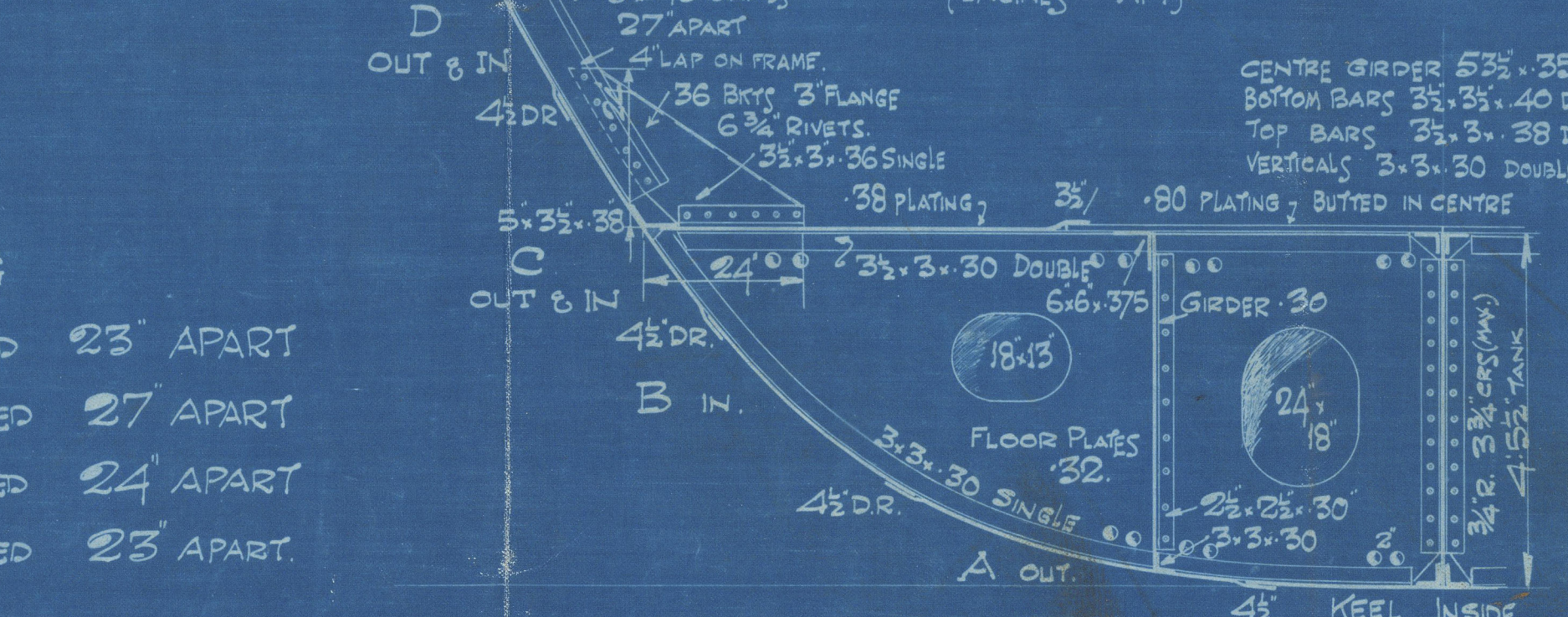
F STRAKE OUT 8 IN 4 1/2 DR 17.91

E STRAKE OUT 8 IN 4 1/2 DR 17.91

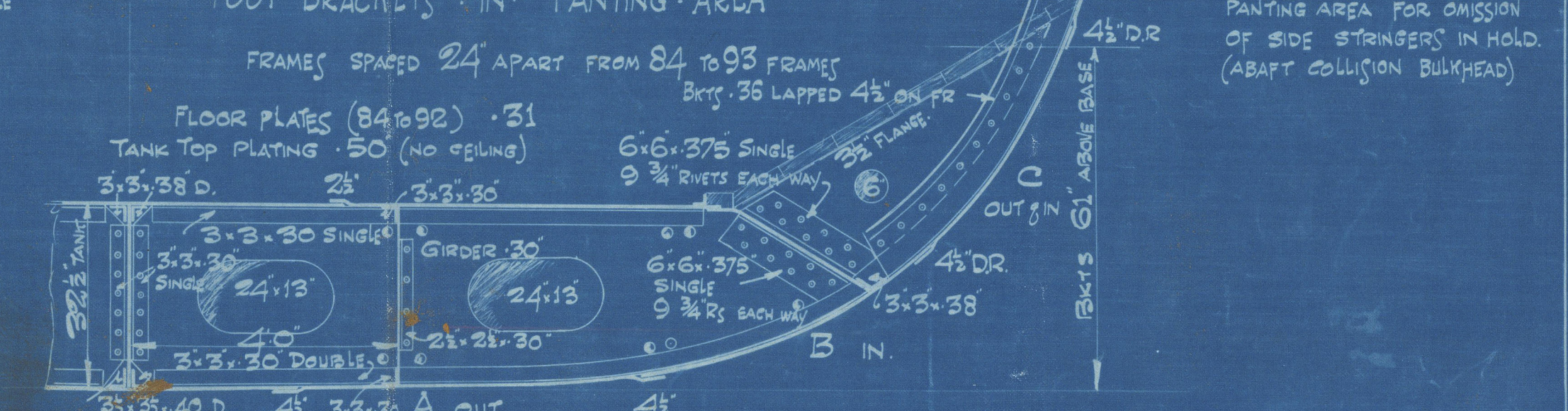
D STRAKE OUT 8 IN 4 1/2 DR 17.91

C STRAKE OUT 8 IN 4 1/2 DR 17.91

SECTION THRO. E.R. TANK (ENGINE AFT)



DOUBLE BOTTOM FWD & FRAME



• MIDSHIP SECTION •
No.325 %s TYNDALL
No.326 %s JOHN HOPKINSON

FRAMES	T TO 6	SPACED	23' APART
FRAMES	6 TO 84	SPACED	27' APART
FRAMES	84 TO 93	SPACED	24' APART
FRAMES	93 TO 103	SPACED	23' APART

• LENGTH B.P. 227'0" • BREADTH EXT. 36'6" • DEPTH MLD TO UPDR 17'5 1/2"

CLASS 100 A1 LLOYDS SPECIAL SURVEY





002790-002797-0167



© 2020

Lloyd's Register
Foundation

Sunderland.

S. P. Austin & Son.

- N^o 326 -

S.S. "JOHN HOPKINSON."

Midship Section.

(as built).

SLD RPT N^o 31083



© 2020

Lloyd's Register
Foundation

002790-002797-0167