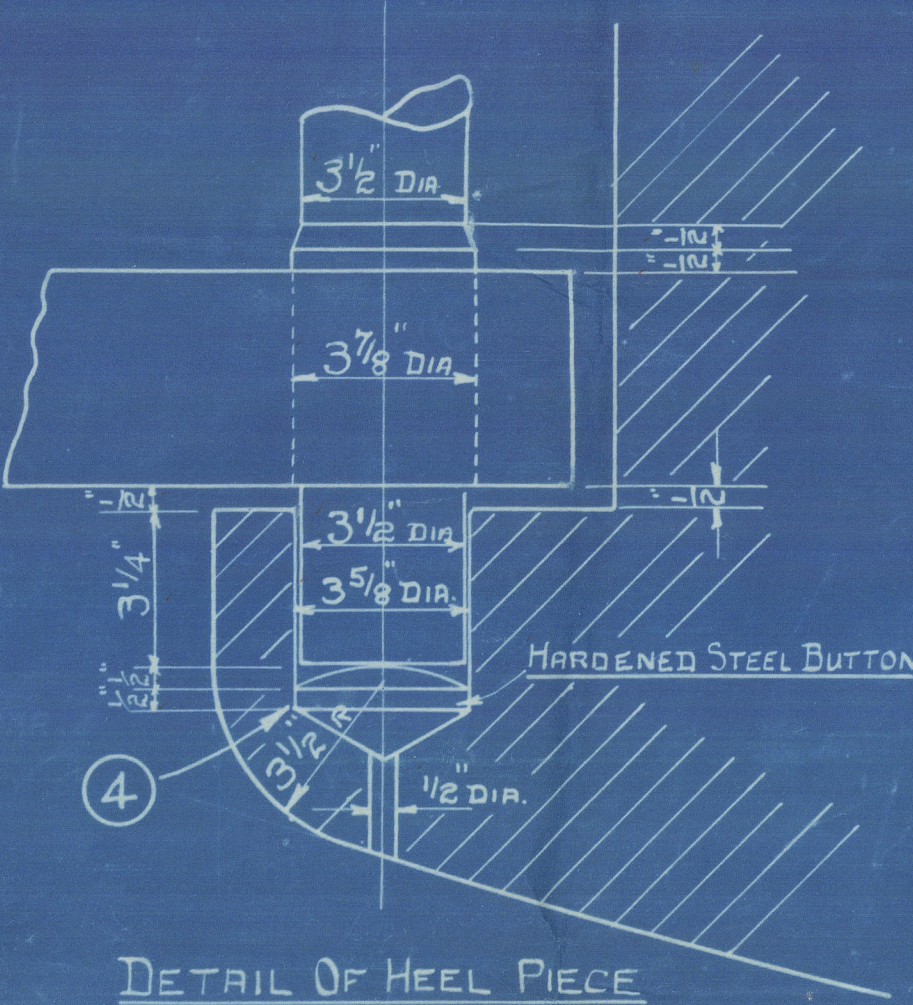
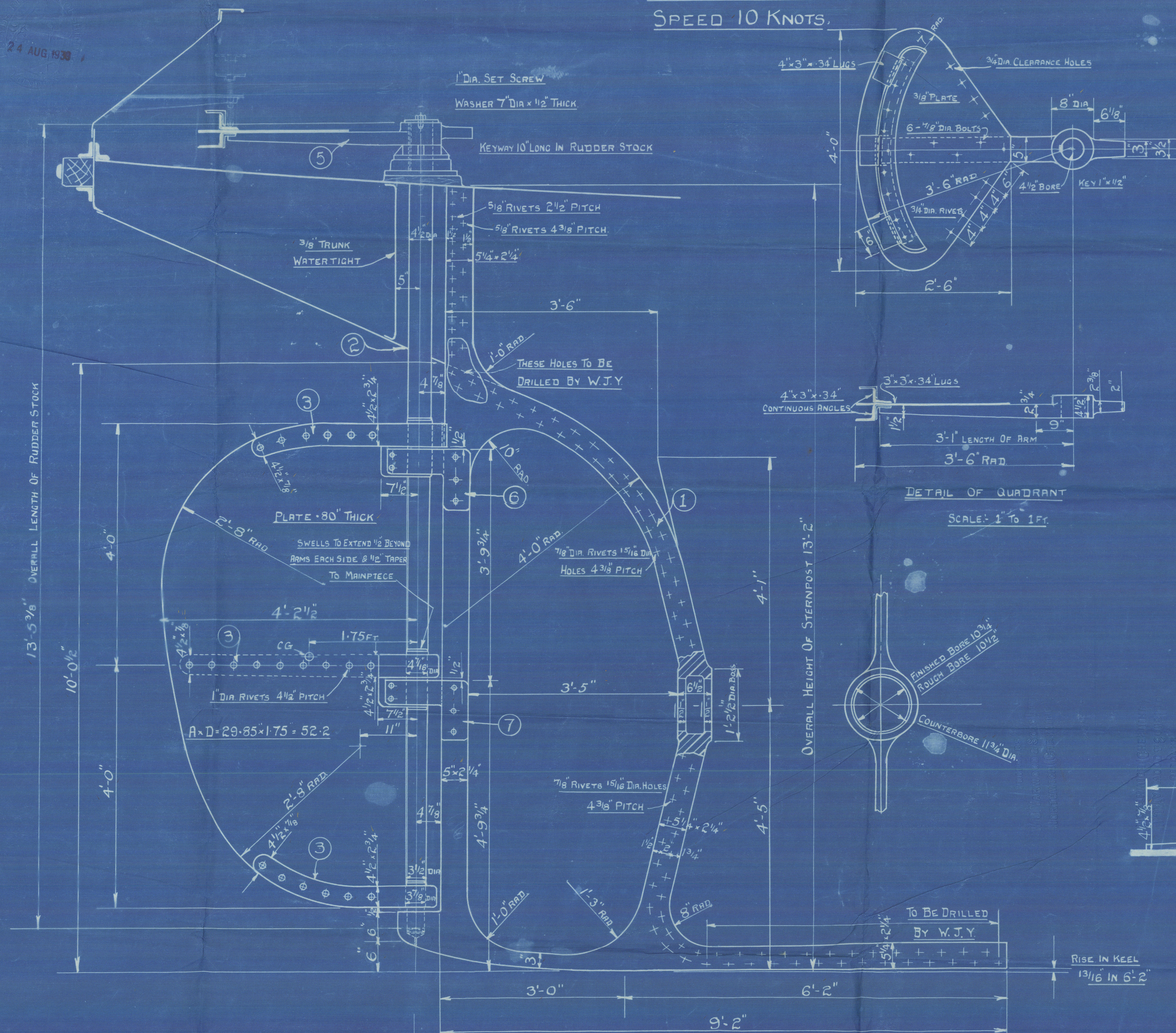
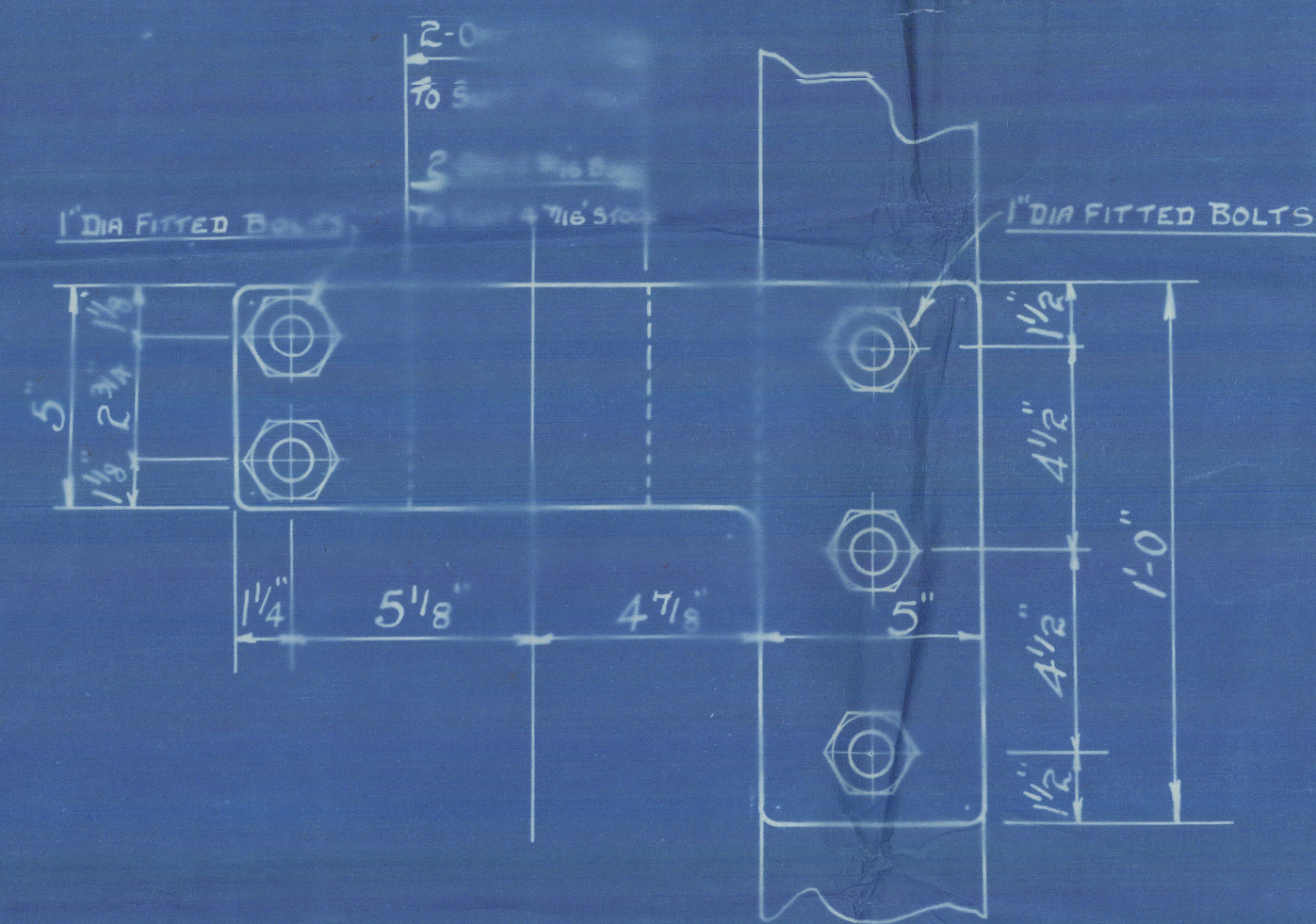
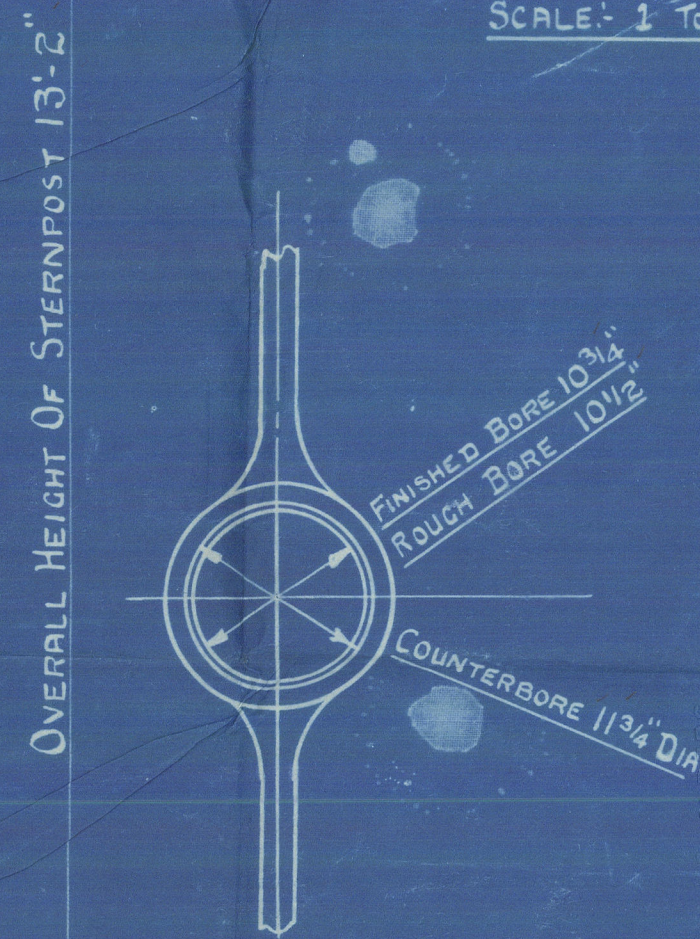
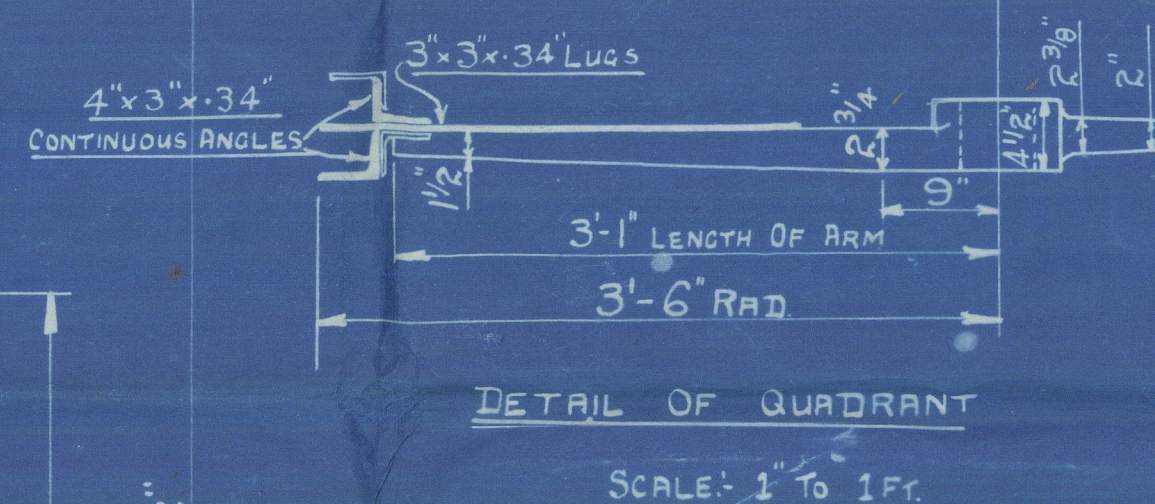
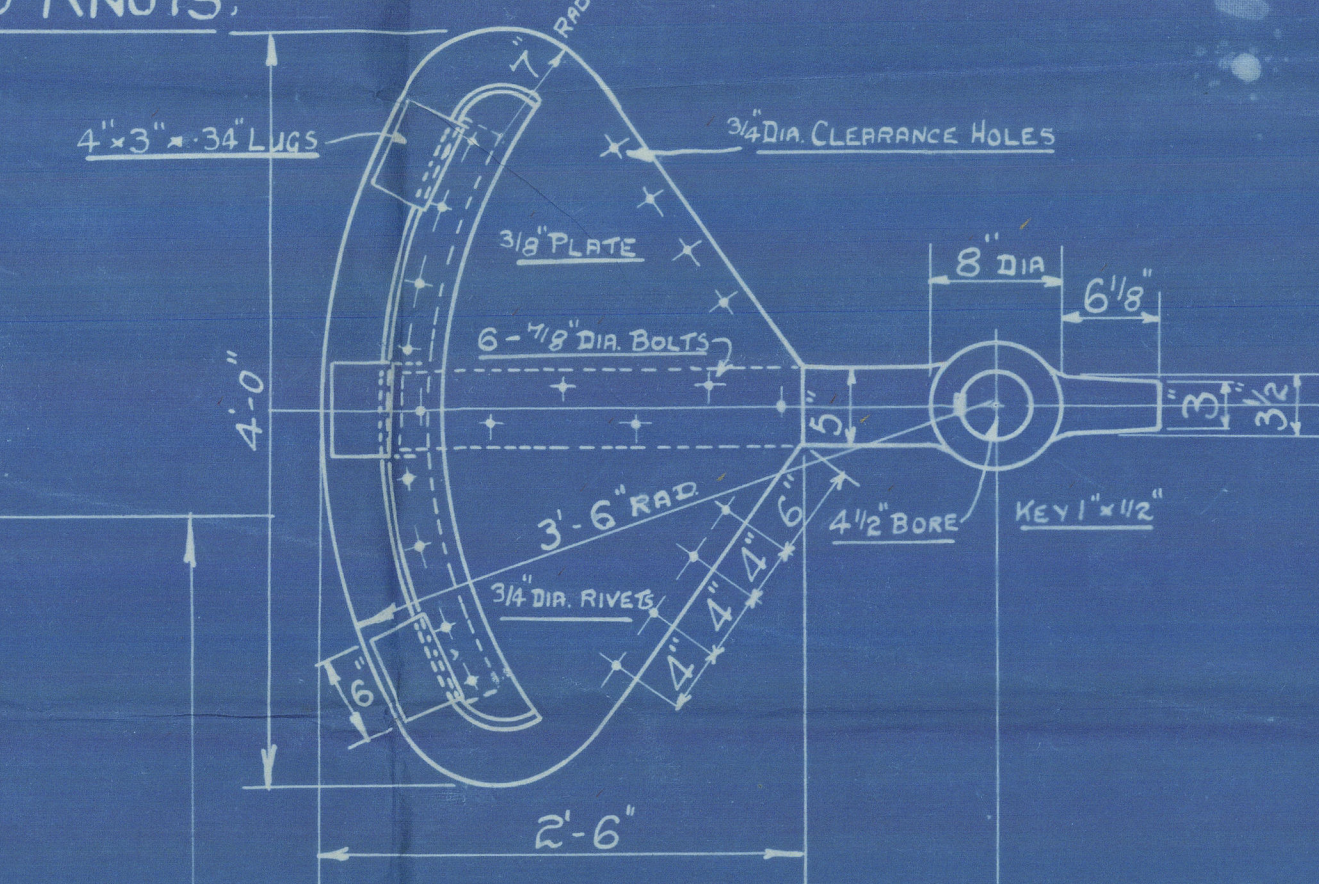


24 AUG 1938

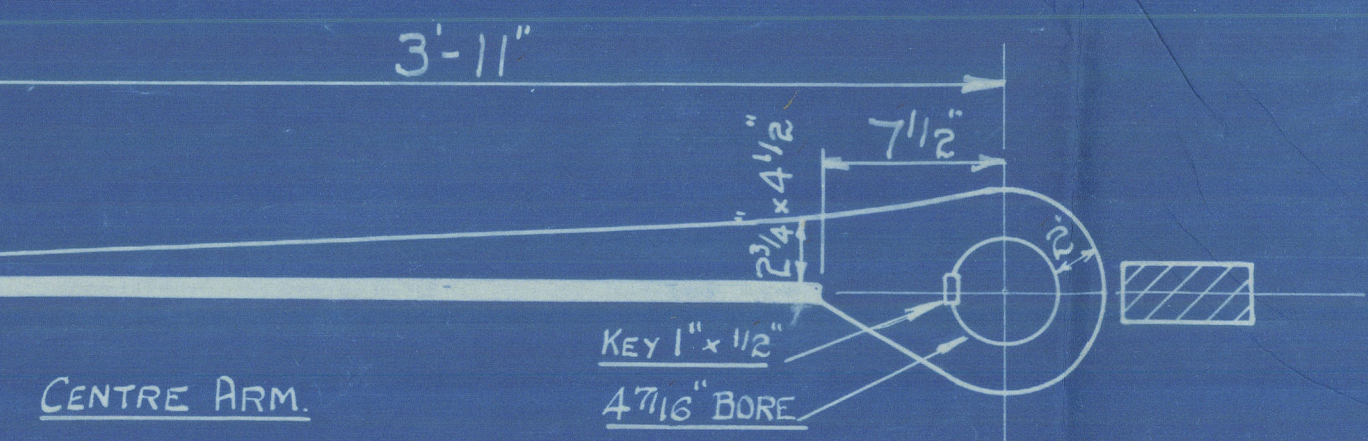
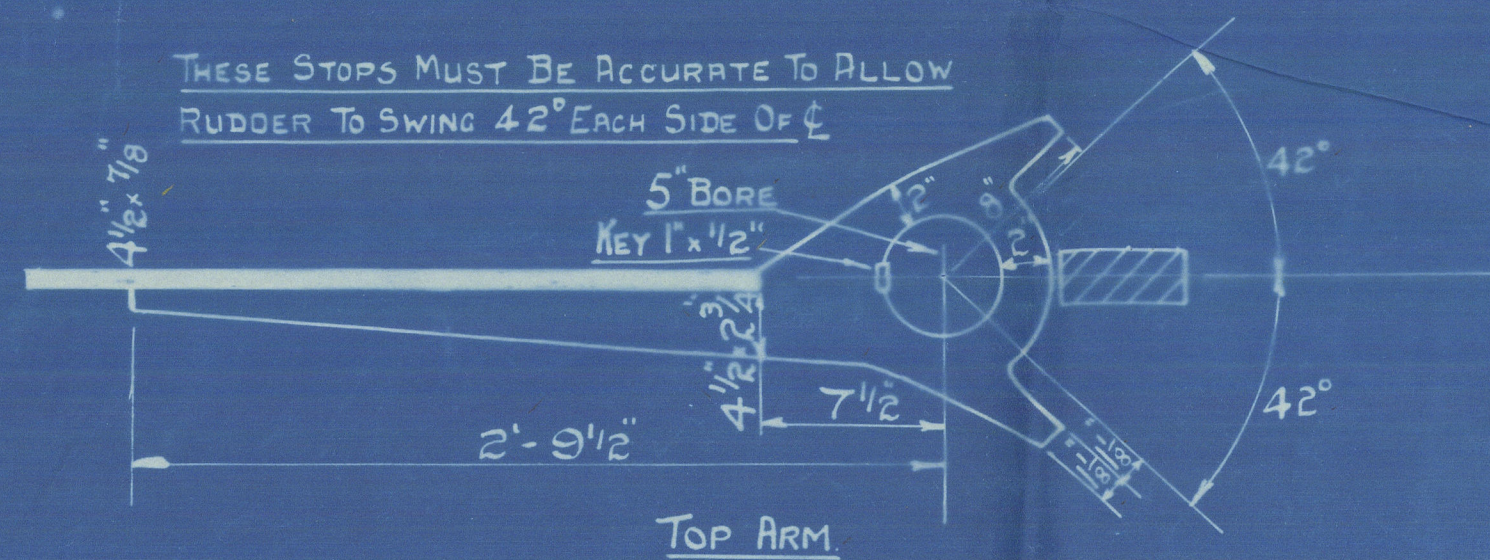
STEERING CHAIN  $1\frac{1}{16}$ " DIA.  
STEERING RODS  $\frac{3}{4}$ " DIA.  
SPEED 10 KNOTS.



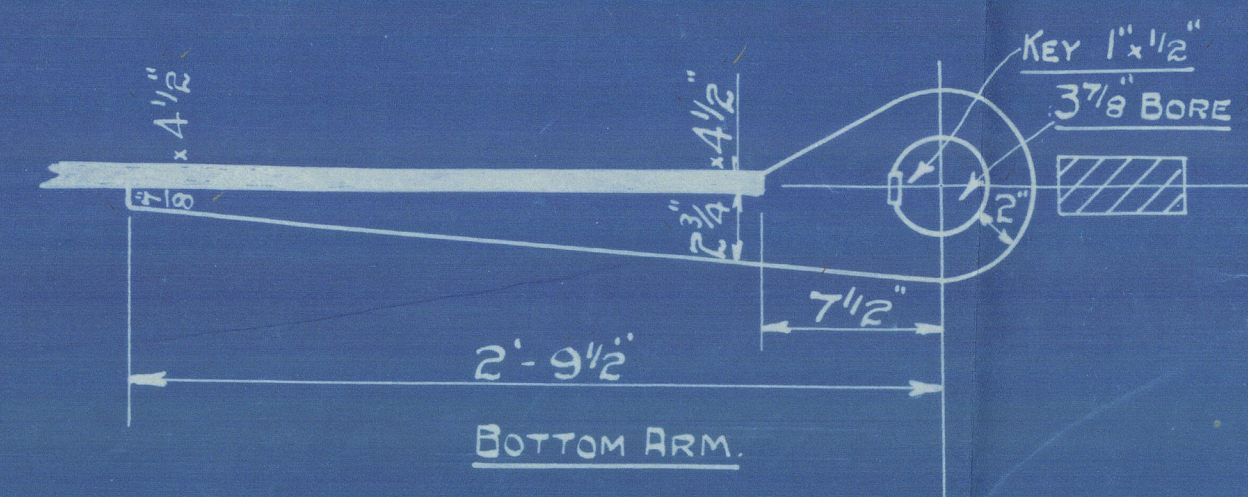
DETAIL OF HEEL PIECE  
SCALE: 3" TO 1 FT.



DETAIL OF SPLIT BRACE  
SCALE: 3" TO 1 FOOT



ARMS TO BE FITTED ON ALTERNATE SIDES OF PLATE  
TO BE SHRUNK ON & KEYED TO RUDDER STOCK.



## DETAIL OF RUDDER & STERNFRAME FOR STEEL STEAM TUG

SCALE: 1" & 1 1/2" & 3" TO 1 FOOT

Nº ON DRG	ITEM	Nº OFF	MATERIAL
1	STERNFRAME WITH BOSS ROUGH BORED & HOLES DRILLED FOR RIVETS & BOLTS AS SHOWN	2	FORGED IRON
2	RUDDER STOCK COMPLETELY MACHINED	2	MILD STEEL
3	RUDDER ARMS SHRUNK ON & KEYED TO STOCK & RIVET HOLES DRILLED	6	FORGED IRON
4	HARDENED STEEL BUTTON	2	STEEL
5	TILLER ARM BORED & KEYWAYED READY FOR FITTING TO STOCK BOLT HOLES DRILLED	2	FORGED IRON
6	SPLIT BRACE $5\frac{1}{8}$ " BORE COMPLETE WITH 5 FITTED BOLTS	2	MILD STEEL
7	SPLIT BRACE $4\frac{9}{16}$ " BORE COMPLETE WITH 5 FITTED BOLTS	2	MILD STEEL

PRINT No. 1,044  
Date 15-8-38

YARWOOD & SONS LTD  
SHIPBUILDERS,  
ENGINEERS AND  
IRONFOUNDERS,  
THE DOCK, NORTHWICH

W.J. YARWOOD & SONS LTD  
THE DOCK,  
NORTHWICH DATE: 7-1-38

JOB Nº 625

DRG Nº 4797

DRAWN BY C.C. CHECKED BY  
TRACED BY G.F. INDEXED BY

23.8.39



A

Yarwoods N<sup>o</sup> 625

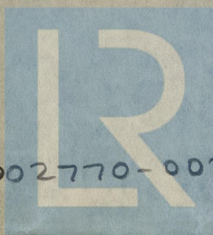
Sternframe + Rudder

Flag "SPARIKIER" ★

F.A. Liv 114280

RECORDS DEPT.,  
LONDON

5



© 2020

002770-002783-0032

Lloyd's Register  
Foundation