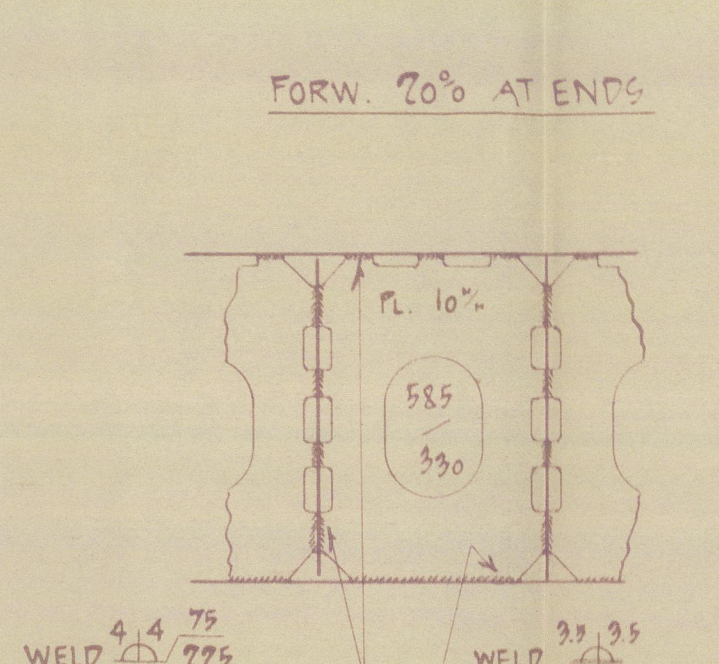
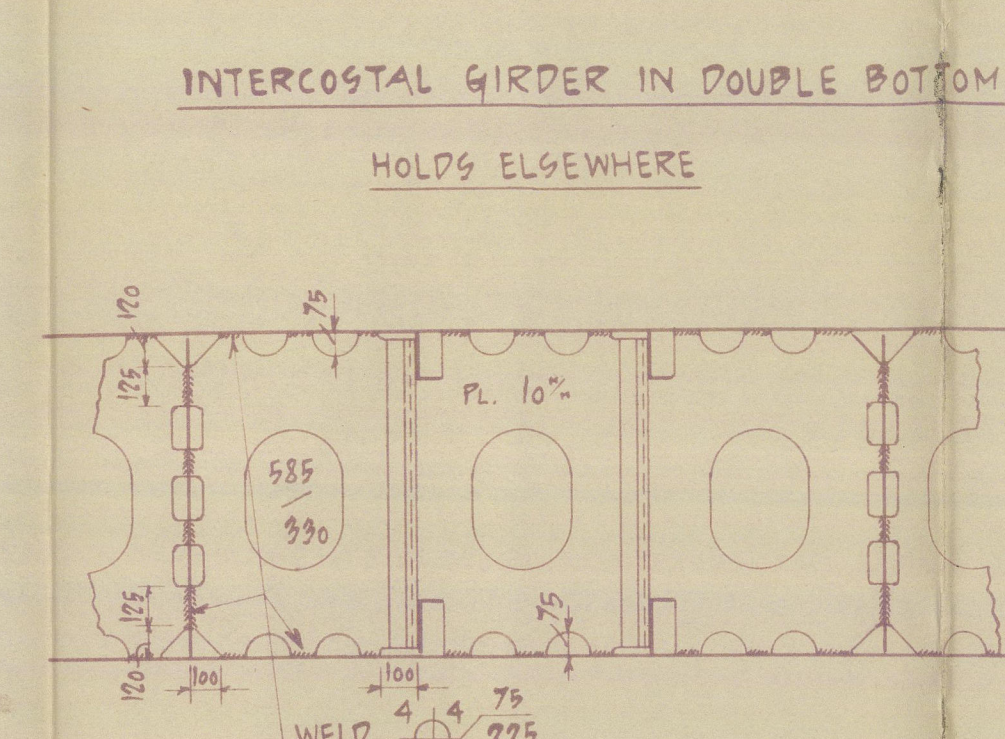


YARD № 92 — MIDSHIP SECTION — SCALE 1:25.

SECTION AFT.



DIMENSION.

NUMERAL.

$$\begin{aligned} D &= 78.58 + 8.0 = 36.58 \\ L \times D &= 415.0 \times 36.58 = 15181 \\ L \times (B + D) &= 415 \times (56.0 + 36.58) = 38421 \\ L/D &= 415 / 37.5 = 11.07 \end{aligned}$$
EQUIPMENT N^o = EN.

$L \cdot (B + D) = 415 \cdot (56.0 + 96.58) = 98481$
 FORECASTLE = $99.59 \cdot 72.5 \cdot .75 = 183$
 DECKHOUSE ANDSHIP = $78.0 \cdot 7.5 \cdot .50 = 292$
 - AFTER = $97.78 \cdot 7.5 \cdot .50 = 141$
 EN = 99037

EQUIPMENT. LETTER a†

2 POWER ANCHORS 9"X6"X66# 63.5# CWT EACH	COLLECTIVE WEIGHT, 126.9 CWT.
1 " " " " " " 58 " " "	
1 STREAM " " EXCL 6"X6 19 " " "	
10 STEWS 2 1/2" STUD CHAIN CABLES	
39 " 1 1/2" CHAIN OR 2 1/2" STEELWIRE FOR STREAM ANCHOR (6-10 FLEX)	
12 " " 4" STEELWIRE FOR TOWLINE (6-24 SPECIAL FLEX)	
20 " 8" CHAIN OR 2 1/2" STEELWIRE FOR HAWKERS (6-10 FLEX) AND WARPS	
0.10 " 4" " " 2 1/2" " " "	

SIDE FRAMES TO SHELL 6 1/2 DIA
 " " " IN PEAKS, DEEPTANK, AND FORM FR. 144 TO 160. 5 1/2

ODENSE STAALSKIEPVÆRFT &
SÆBTEGNESTUEN
for D. TOM-PETERSEN
1945
H. Persing

1:25 MK
27-7-45
MIDSHIP SECTION
AFLEVERINGSTEELING

As built

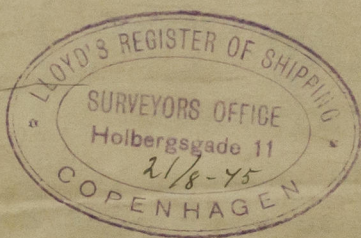
Midship Section

for

Yard No. 92

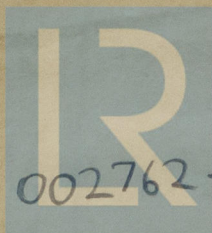
(2)

Odense Staalskiboverft A/S



M^r. Sally Mørsk af København.
Gpm. Report No. 11761.

W/S 636



© 2021

Lloyd's Register
Foundation

002762-002769-0135