

21 DEC 1922

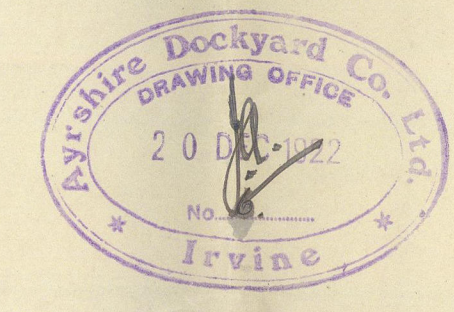
N^o 492

RUDDER & STERNPOST.

SCALE 1/2 INCH = ONE FOOT

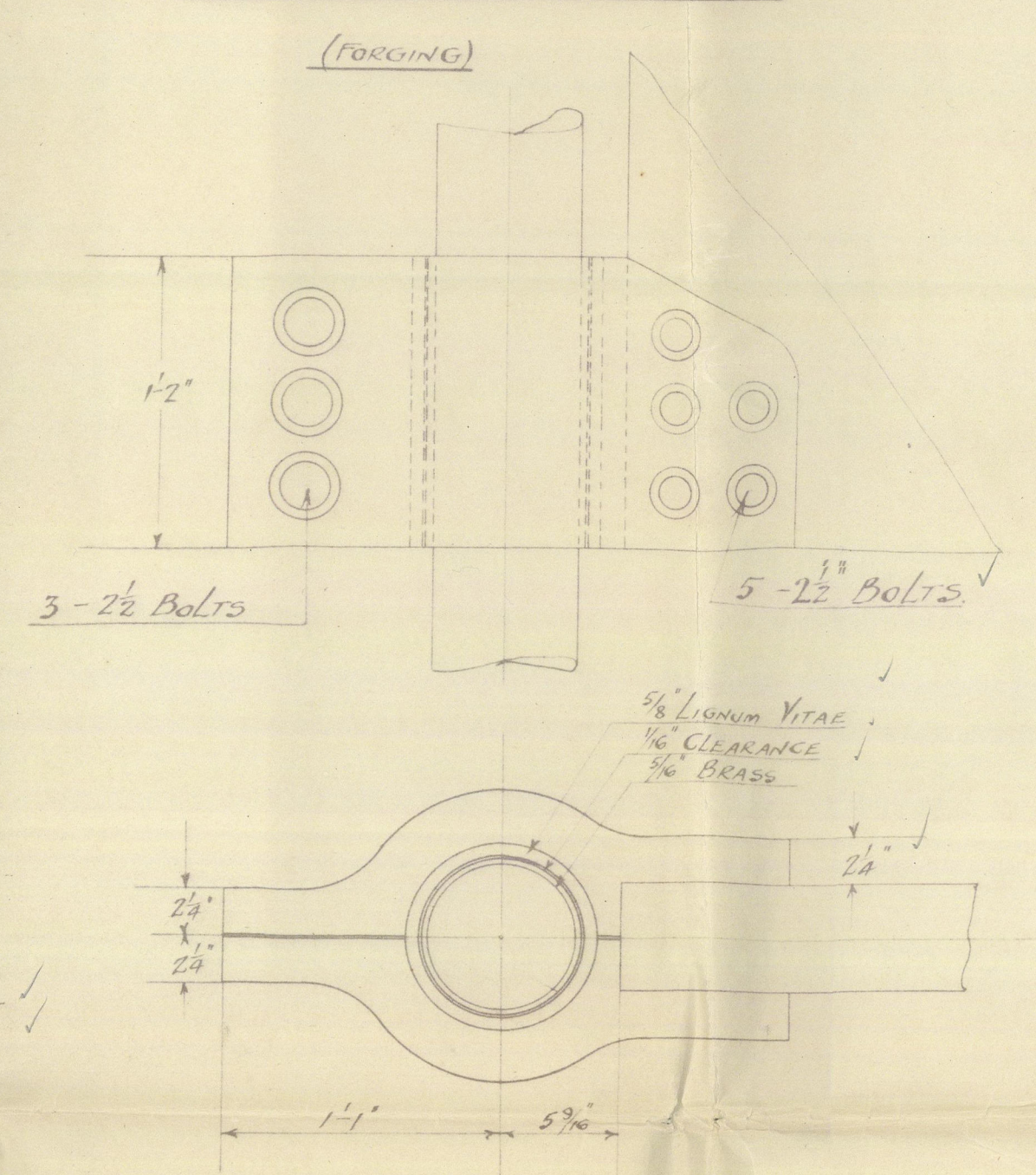
DETAILS 1 1/2 " = " "

RUDDER TO BE OF BEST FORGED SCRAP IRON.
RIVETS 3/16" HOLES SPACED AS SHOWN ON PLAN.
STERNPOST TO BE OF BEST FORGED IRON.
RIVETS SPACED AS SHOWN ON PLAN.
ALL TO BRITISH CORPORATION'S REQUIREMENTS.

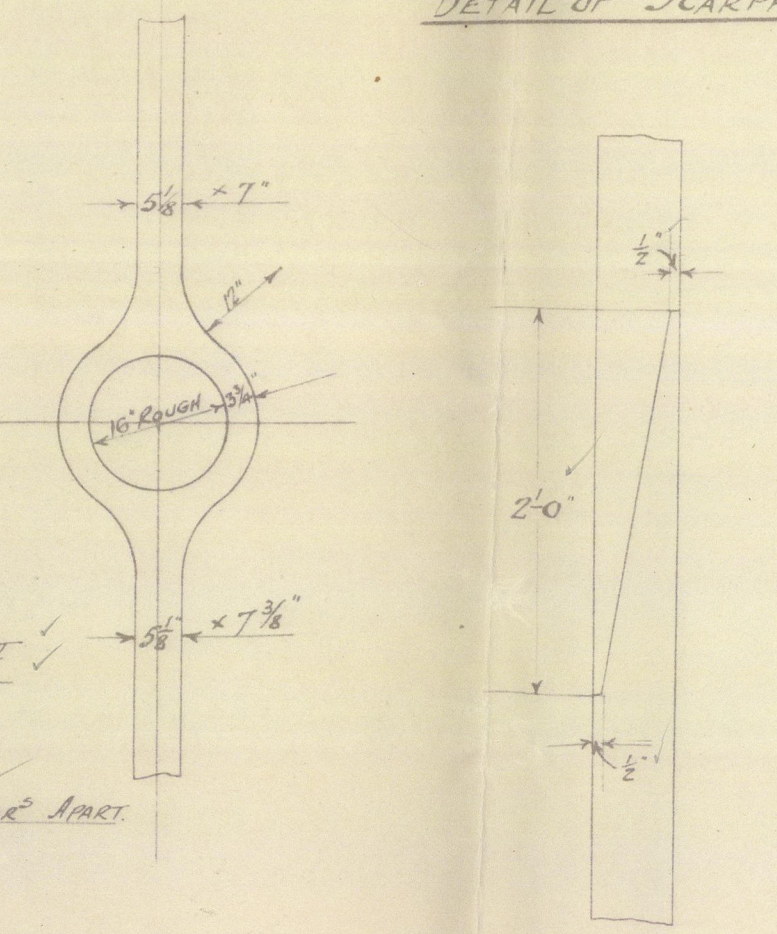


Approved *[Signature]*
E. L. 21

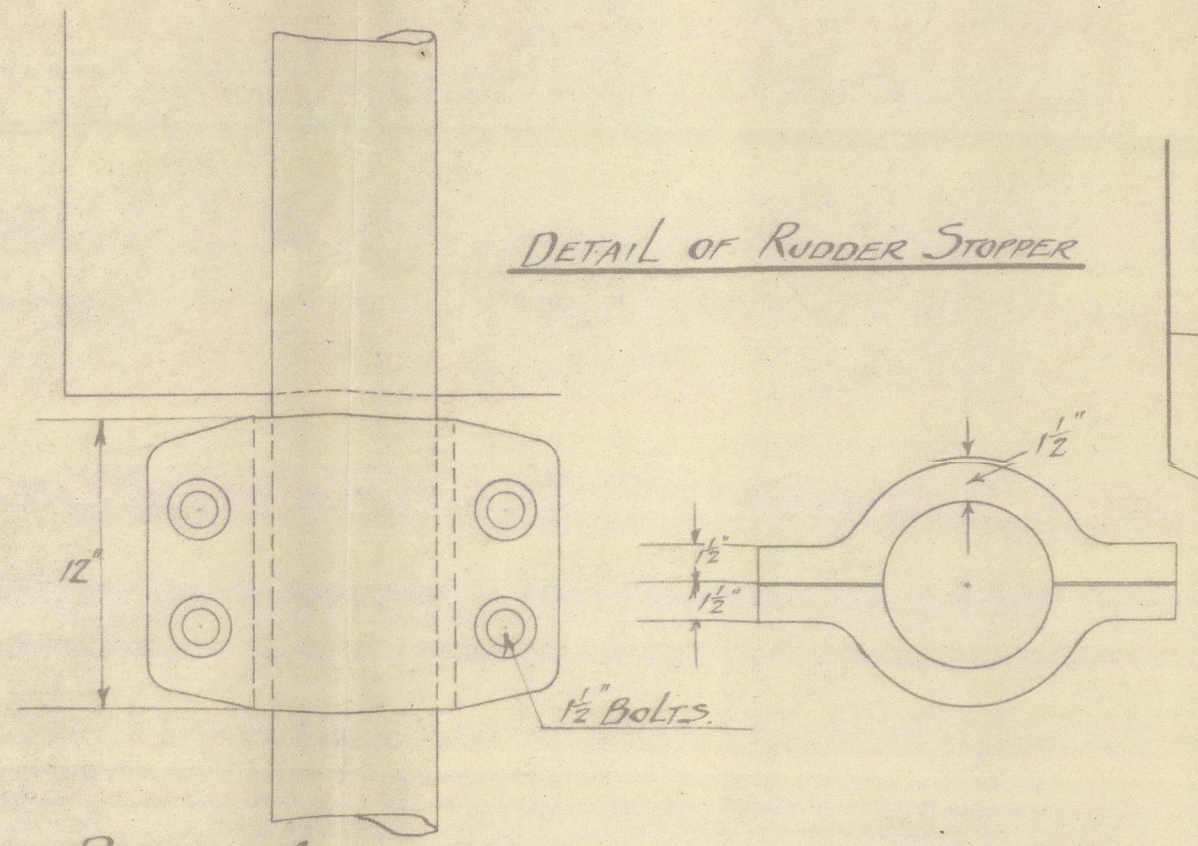
DETAIL OF RUDDER BAND



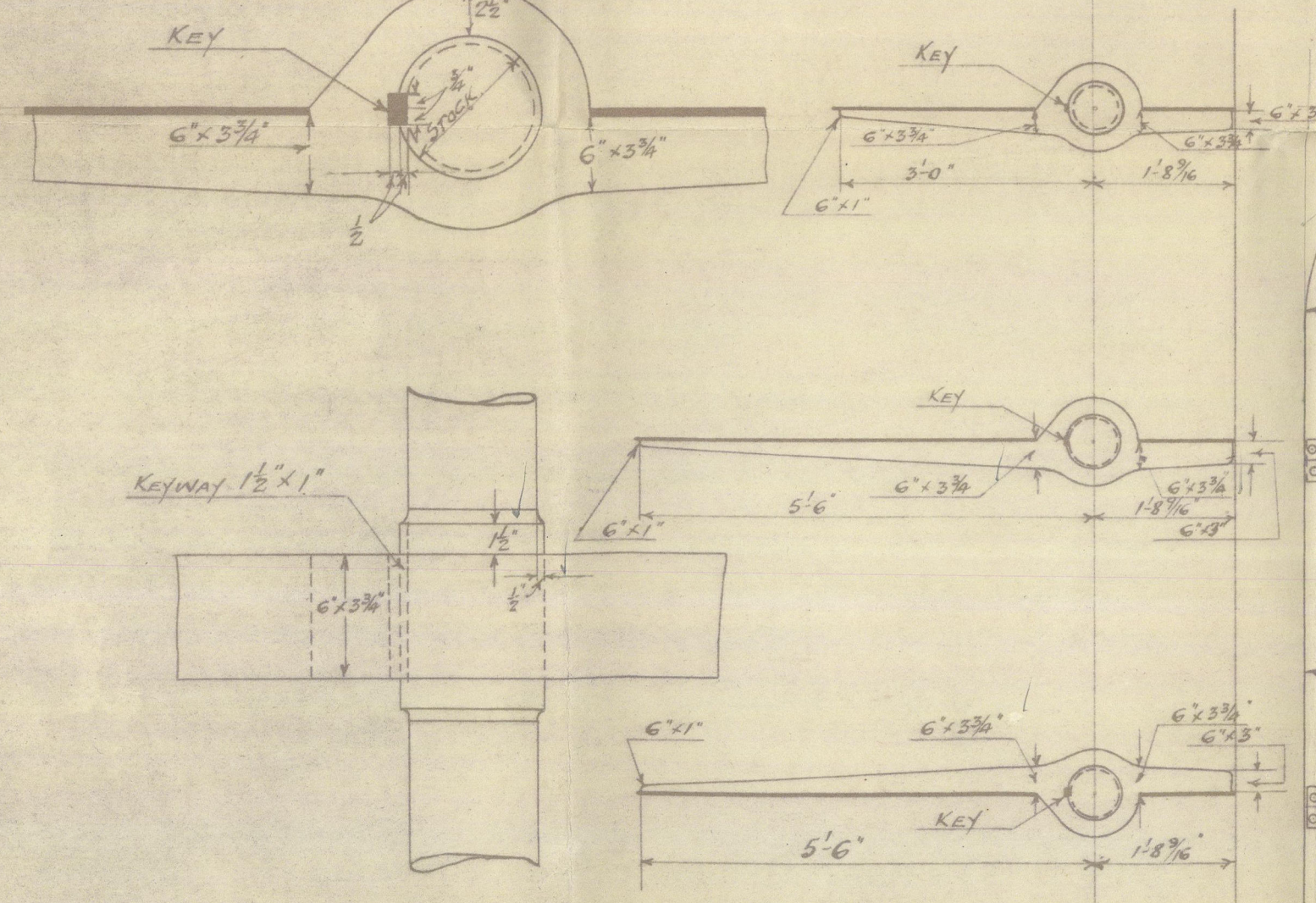
DETAIL OF SCARPH



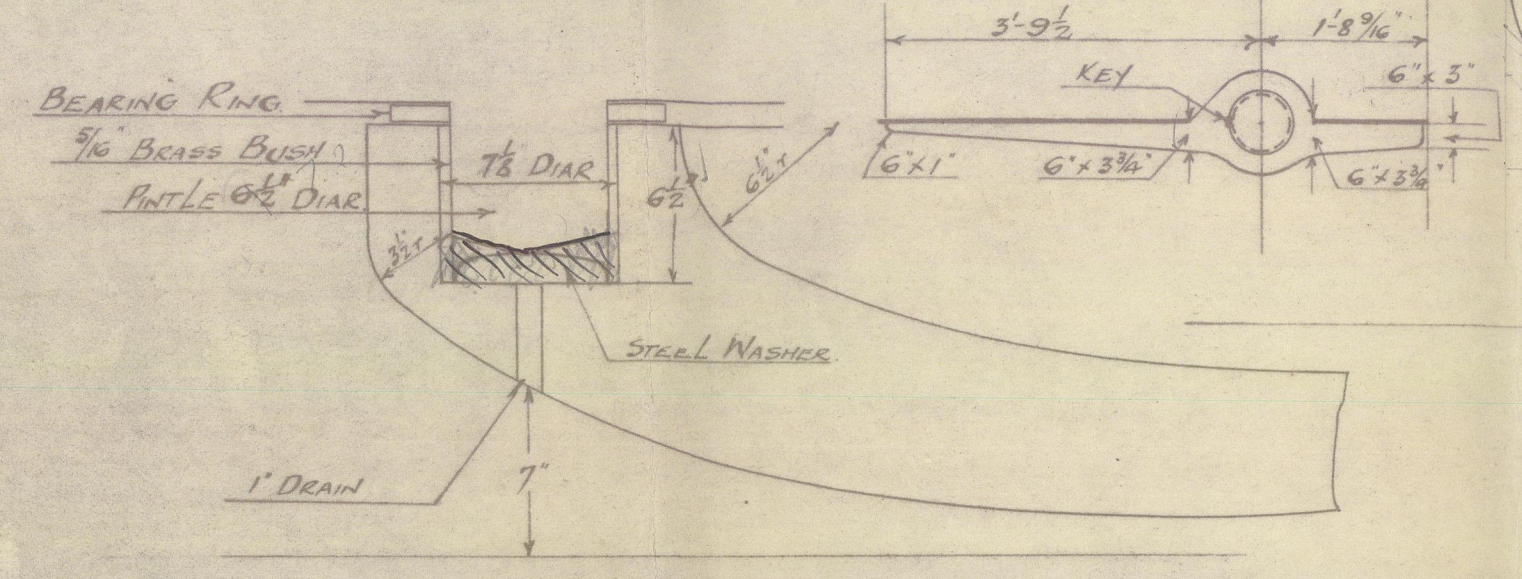
DETAIL OF RUDDER STOPPER



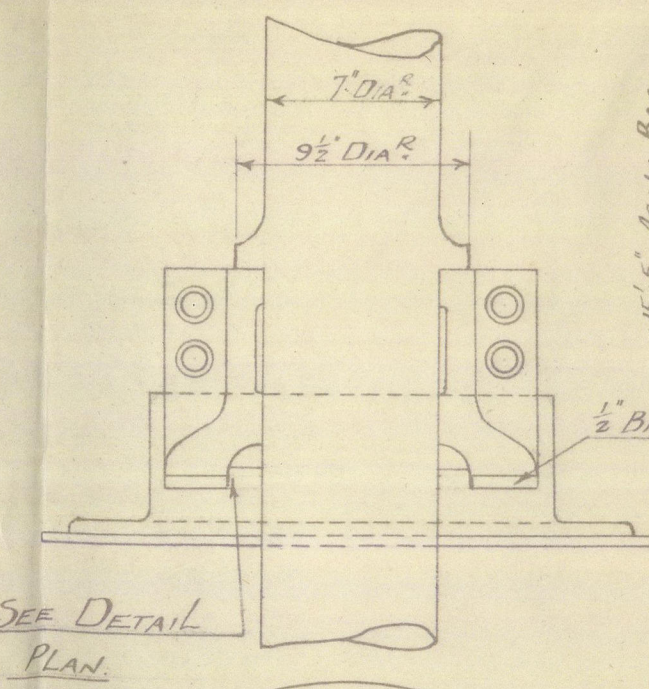
DETAIL OF RUDDER ARM IN WAY OF STOCK



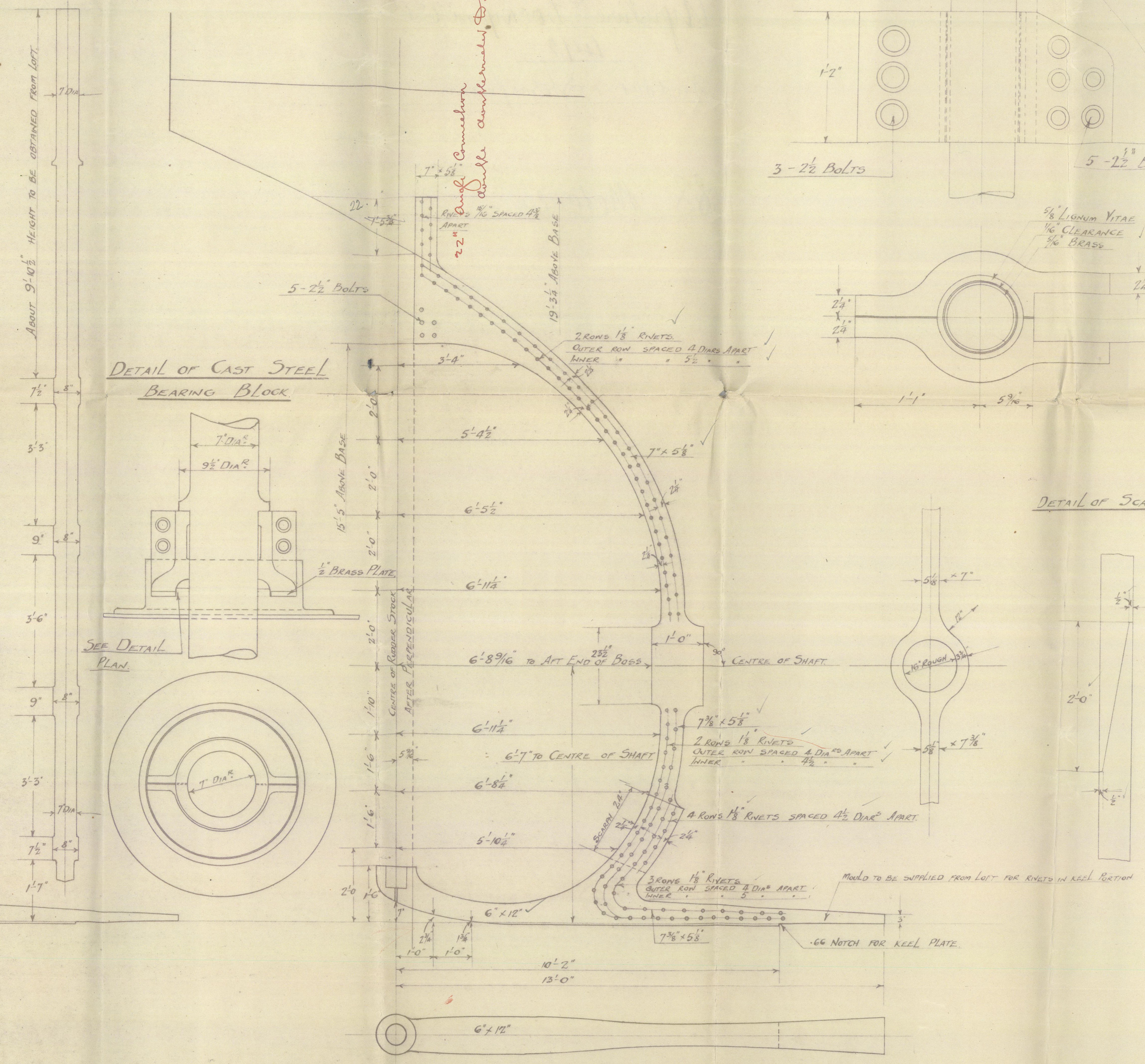
DETAIL OF PIVOT



DETAIL OF CAST STEEL BEARING BLOCK



SEE DETAIL PLAN



Ayrshire Dockyard Co

492

Rudder + Sternframe

Bag.

Ayrshire Dockyard Co^{ld}

492

Rudder + Sternframe

21. 12. 22

SS Metcalfe



© 2021

Lloyd's Register
Foundation

002762-002769-0043