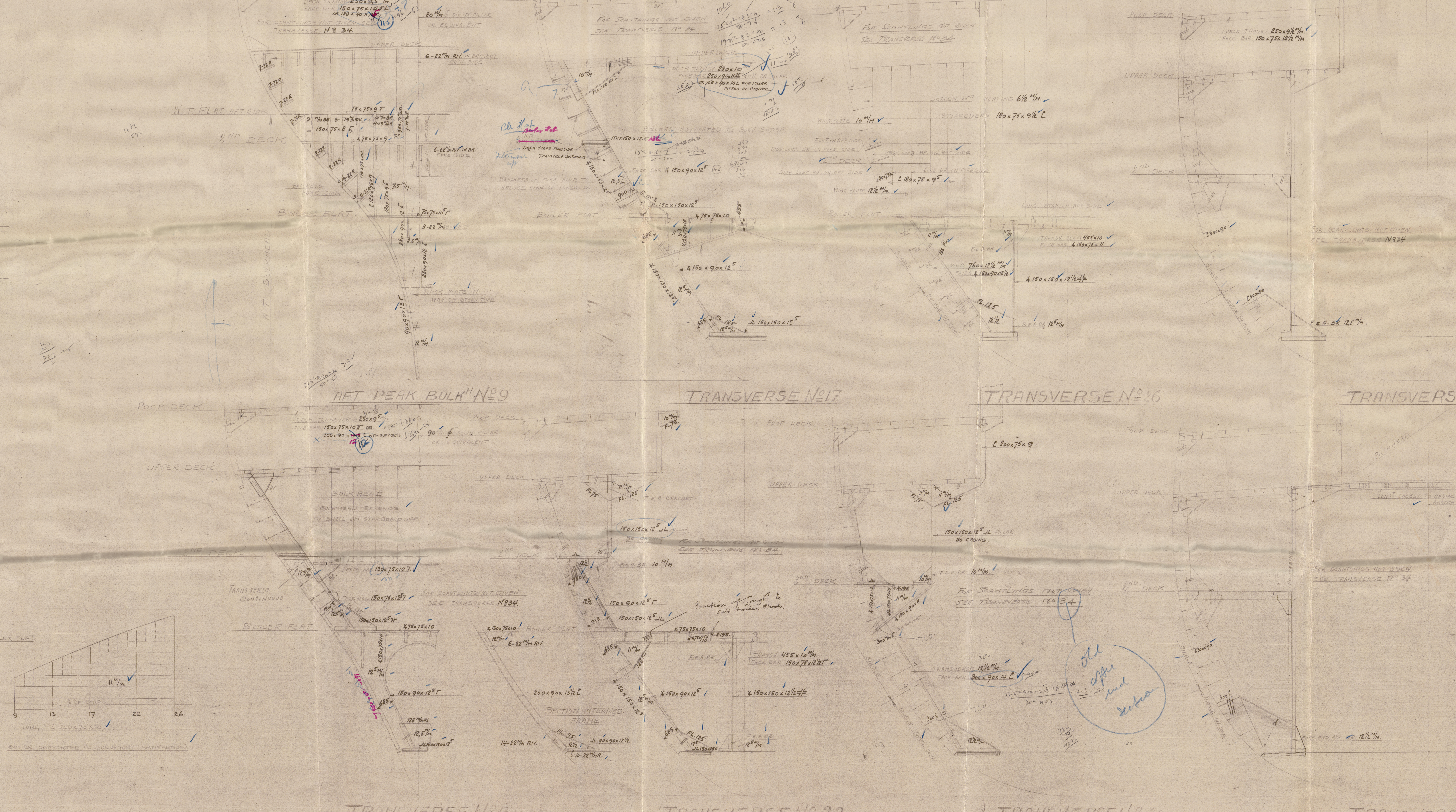
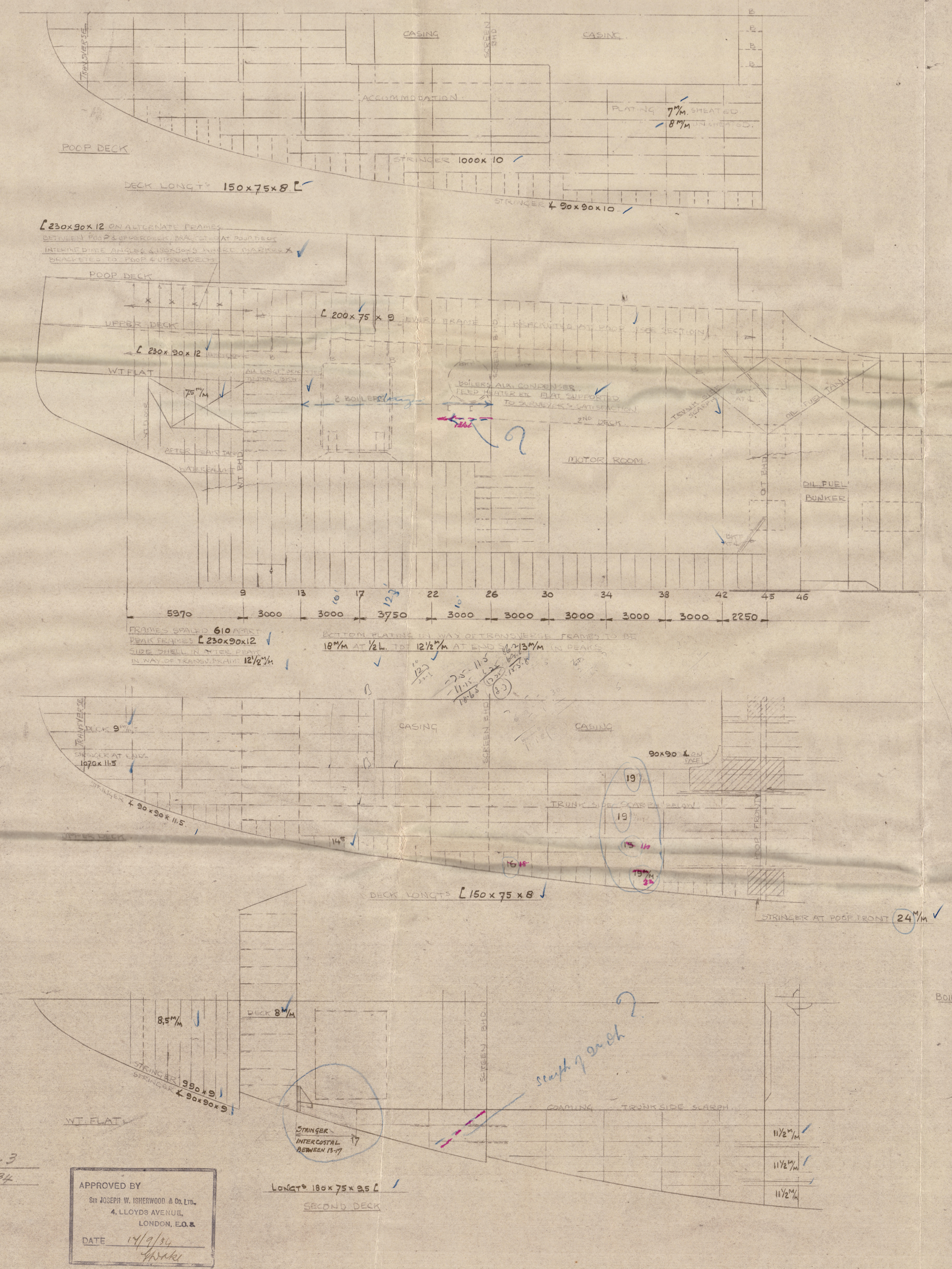


Handwritten initials 'JW' in the top left corner.



SINGLE SCREW OIL TANK VESSEL  
DIMENSIONS: L.B.F. 485'-0" x B.M.D. x D.M.L.  
AFTER END SECTIONS.  
SCALE: PROFILE DECKS 1/50 SECT. 1/50-1/25  
THE BRACKETLESS SYSTEM (PATENT).

ALL BULB ANGLES-CHANNELS ARE NEW GERMAN STAND.

NOTES  
ALL SECTIONS ARE DRAWN LOOKING AFT.  
THE POSITION OF LONGITUDINALS ARE ONLY APPROXIMATE.  
MATCHES FOR LONGITUDINALS ARE NOT SHOWN.  
FACE BARS IN TRANSVERSES HAVE AS OF OTHER SECTIONS THAN SHOWN.  
IF BE EQUIVALENT ARE.  
NEIGHBORING PLATES EXCEED 10" IN DEPTH SUPPORTS TO BE FITTED.  
NO LIGHTENING HOLES ARE PUNCHED IN TRANSVERSES.  
ALL TRANS. EXCEPT THESE OTHERS MARKED.  
NO BULK BARS TO BE PUNCHED IN FREE END OF BULKHEADS.  
KIVETS IN FREE ENDS ARE ALL LIGHTENED AND NOT TO BE  
SPACED 3 DIAS. APART FOR C. KIVETS.

139  
AFTER END SECTIONS  
SCALE 1/50 = 1/100

R.D.M. - TEEKENKAMER - 3	
NO.	DESCRIPTION
1	...
2	...
3	...
4	...
5	...
6	...
7	...
8	...
9	...
10	...
11	...
12	...
13	...
14	...
15	...
16	...
17	...
18	...
19	...
20	...
21	...
22	...
23	...
24	...
25	...
26	...
27	...
28	...
29	...
30	...
31	...
32	...
33	...
34	...
35	...
36	...
37	...
38	...
39	...
40	...
41	...
42	...
43	...
44	...
45	...
46	...
47	...
48	...
49	...
50	...



anc form

~~5-1~~

Rotterdamse 189

9. S. Walden

After end sections (REVISED)

(4 - 0)



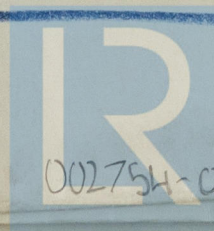
"MENARA,"

RECORDS DEPT  
LONDON.

23

22

Russell



© 2020

Lloyd's Register  
Foundation

002754-002761-0046